





A high-quality, high-production printer is no longer a special product. Mimaki adds a new value to the next-generation printer "TS300P-1800". Developed for the textile print industry, the TS300P-1800 delivers cost-effective printing while maintaining high quality and productivity.

# NEXT GENERATION



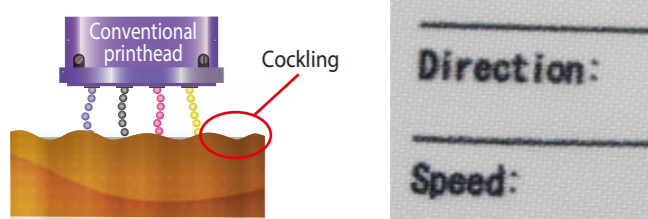
## Cost-effective solutions

The new high-gap printhead achieves high-quality printing on cockled transfer papers.

Low-cost thin transfer papers are liable to cockling\*, which affects the quality of the printhead. To prevent the contact between the printhead and raised surface, a high head gap setting is required. In conventional models, such gap conditions reduce the accuracy of the ink droplet placement. The new TS300P-1800 employs a new printhead that ejects droplets at high speed to ensure accurate ink droplet placement with a high head gap, thereby enabling high-quality printing on thin papers.

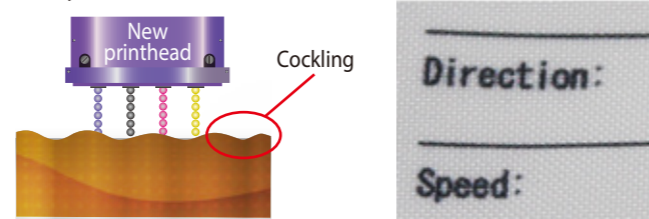
\* Cockling: Wrinkling of the media surface because of ink absorption.

■ Conventional printhead



Inaccurate placement of the ink droplets leads to blurring in the printed text.

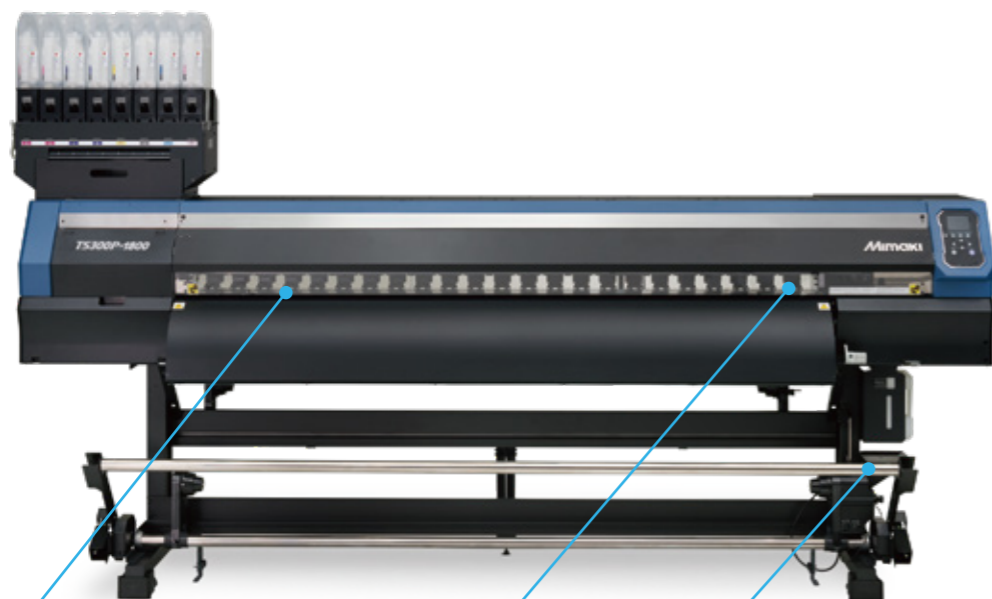
■ New printhead



Accurate placement of the ink droplets produces sharp, clear text.

## Cockling-reduction transfer mechanism

The cockling-reduction transfer mechanism enables high-quality printing on a wide range of transfer papers, from the low-cost thin papers to thick papers. This high media compatibility reduces the operating cost of the TS300P-1800 without losing the print quality.



**Vacuum media hold-down system beneath the platen**

The media attach to the platen by vacuum suction. Under suction, the cockled media surfaces are smoothed out.



**Larger media press plates**

Enlarged plates moderate cockling by reducing media uplift and hold down the media immediately after printing.



**Auto Media Feeder (AMF)**

The AMF automatically applies the right tension to the media, thereby maintaining stable media feeding and take-up.



## High-performance, low-cost sublimation transfer ink Sb411 Series

**Affordable ink price reduces production cost**

The Sb411 Series ink costs 20% less than the conventional ink "Sb53".

This competitive price improves the performance of businesses.

**Beautiful and vibrant print results**

This low-sedimentation ink achieves stable and beautiful printing. Moreover, heat-press transfer printing yields vibrant colors by virtue of the high-density printing.

**Stable ink flow and jetting**

The Sb411 Series ink has superior re-solubility properties. Therefore, dried inks adhered around nozzles are easily wiped off with cleaning solutions. The improved resolvability also ensures more stable ink jetting, thereby improving the print production yield. Moreover, because the ink stability is improved, fewer regular cleanings are required, further contributing to cost reduction.

**Low smoke emission**

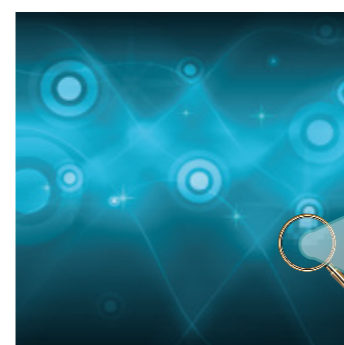
The Sb411 Series ink emits little smoke, thereby improving the work environment and increasing the work efficiency during heat-press transfer printing.

## Mimaki's print technologies

**Mimaki Advanced Pass System 4 (MAPS4) reduces banding**

Mimaki's unique anti-banding technique MAPS4\* is an advanced version of MAPS3. To prevent banding, swath boundaries are overprinted, whereas boundaries prone to banding are printed with fewer ink droplets.

\* MAPS4: Mimaki Advanced Pass System 4



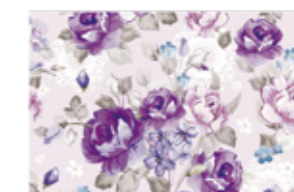
MAPS ON



MAPS OFF

**Superior inkjet technology**

Mimaki's superior inkjet technology accurately places the ink droplets without losing their perfect circularity. This ensures that texts, lines, and edges are clearly and sharply printed.



Waveform control applied



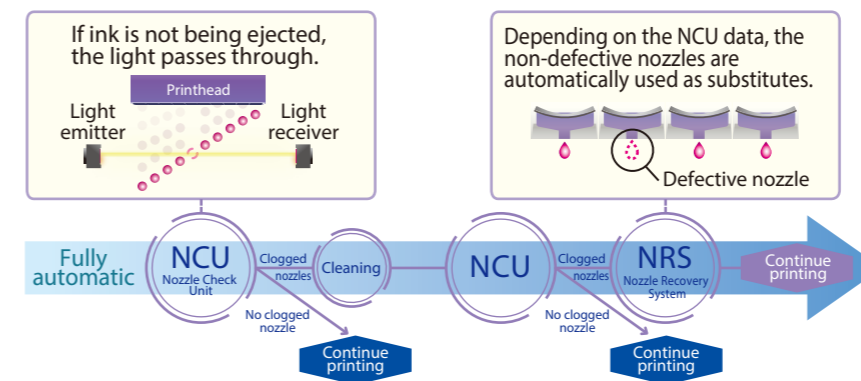
No waveform control



## Uninterrupted printing solutions

**Continuous operation support pack minimizes the downtime**

The Nozzle Check Unit (NCU) detects nonfunctioning nozzles and automatically cleans them. If the nozzles fail to operate after cleaning, defective nozzles are replaced by non-defective ones until a technician arrives, and printing is continued. This feature enables uninterrupted print operations and continuous productivity.



**Mimaki Bulk Ink System 3 (MBIS3) for long-time continuous printing**

Large ink packs (2 liters) can be installed in the MBIS3. The standard "MBIS3" enables long-time continuous printing at reduced operating cost.

