

COLOR INKJET PRINTER

JV300/150 series
CJV300/150 series

**Firmware (FW)
Version Updater
User Manual**

USER MANUAL

MIMAKI ENGINEERING CO., LTD.

URL: <http://mimaki.com/>

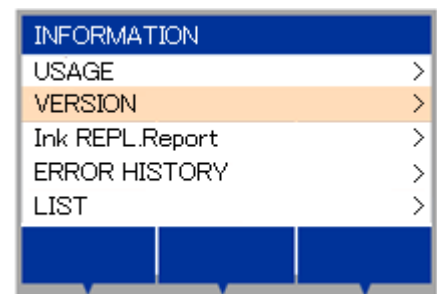
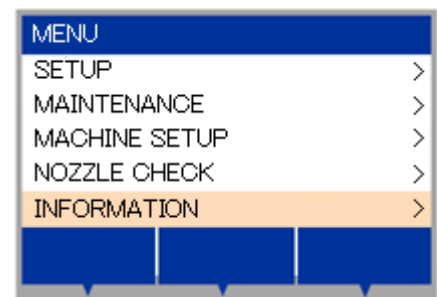
JV·CJV300/150 User manual for Firmware (FW) Version Updater

- 1 Check the current FW version of the printer.
- 2 Download the [Installer downloader of FW VersionUpdater for JVCJV300/150 series download tool from Mimaki website.
- 3 Download the [Installer downloader of FW VersionUpdater for JVCJV300/150 series] installer.
- 4 Install the [Installer downloader of FW VersionUpdater for JVCJV300/150 series.
- 5 Update the FW version of the printer with [Installer downloader of FW VersionUpdater for JVCJV300/150 series.

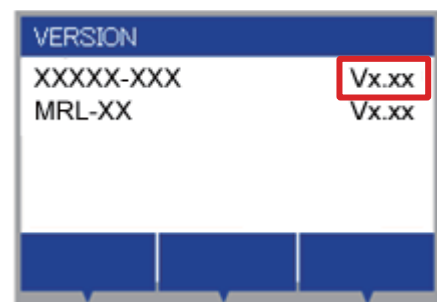
Work procedure of JV·CJV 300/150 FW version upgrade

Step 1. Check the current FW version of the printer.

- 1 Turn on the printer and press [FUNC1] key in LOCAL.
- 2 Press [V] key 4 times to select "INFORMATION" and then press [ENTER] key.
- 3 Press [V] key one time to select "VERSION" and then press [ENTER] key.



- 4 Check the FW version shown on the printer display.
If the version is displayed as below, please update the FW version.
JV·CJV300/150: v1.80 to 2.20



● When installing from CD

Follow Step 4 onward.

● When downloading from the Web site

Step 2. Download the [Installer downloader of FW VersionUpdater for JVCJV300/150 series] download tool from Mimaki website.

1 Download the [Installer downloader of FW VersionUpdater for JVCJV300/150 series] download tool from the link below:

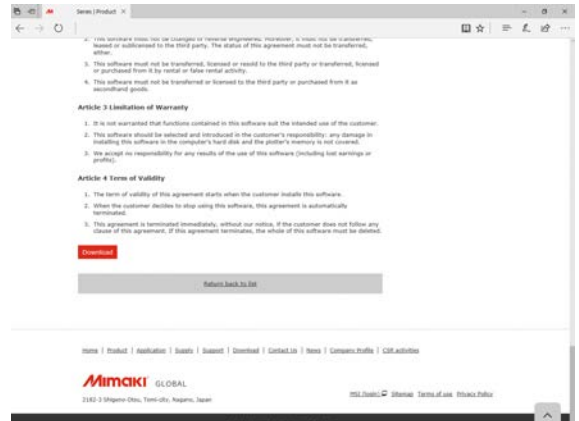
Japanese:

<http://japan.mimaki.com/product/inkjet/i-roll/jv300-series/>

English:

<http://mimaki.com/product/inkjet/i-roll/jv300-series/>

Download tool size: approx. 333KB



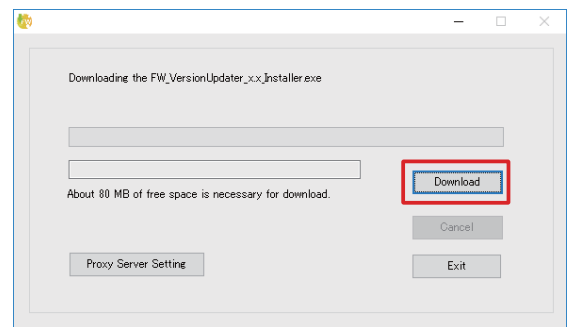
Step 3. Download the [Installer downloader of FW VersionUpdater for JVCJV300/150 series] installer.

1 Double-click the download tool and click the [Download] button. The installer is downloaded automatically.

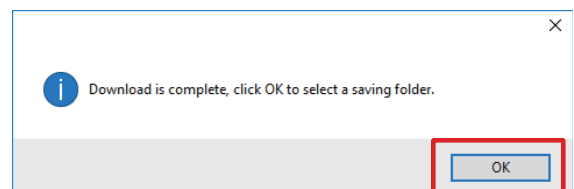
The installer is normally saved in [Download] folder.



FWUpdate_Download_Tool.exe



2 "Download is complete" is displayed. Click the [OK] button and select the folder to save the file.



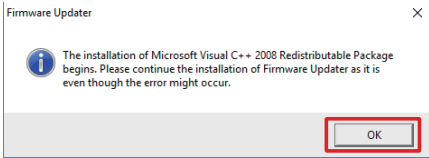
Step 4. Install the [Installer downloader of FW VersionUpdater for JVCJV300/150 series].

- 1 Double-click [FW_VersionUpdater_for_(C)JV300_150[2.20]series_Installer.exe] and execute the installation.

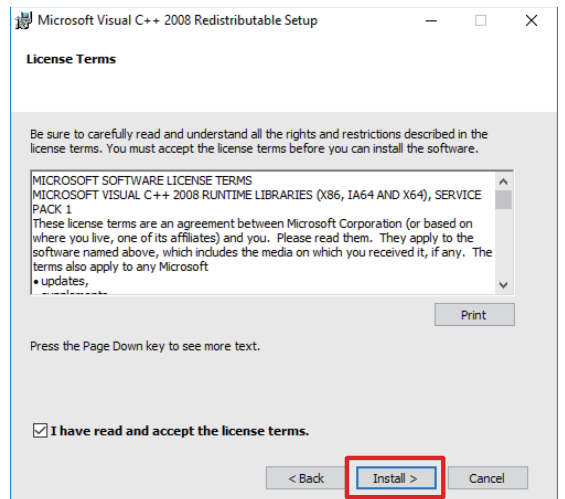
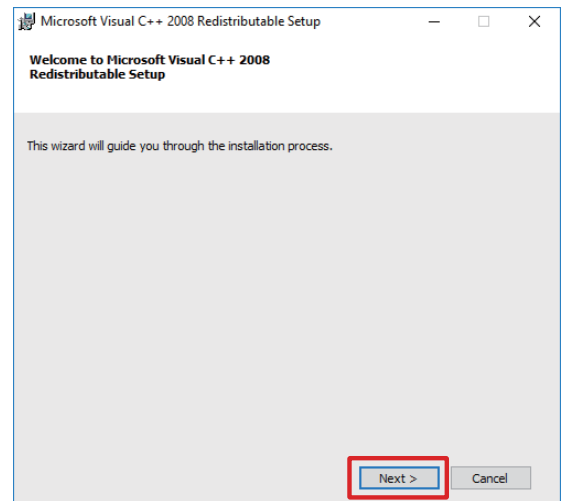
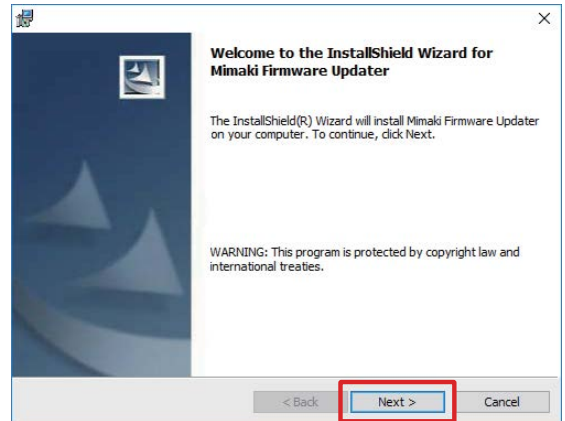


Caution

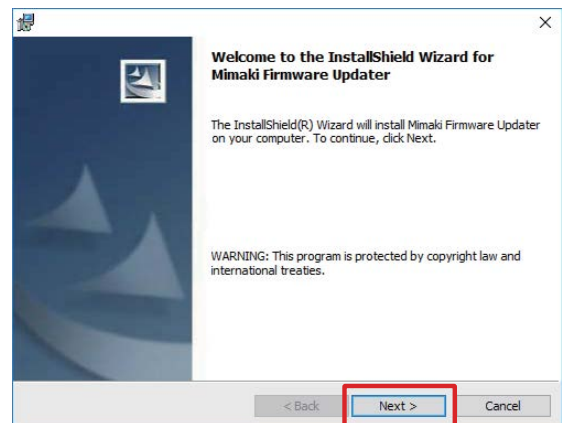
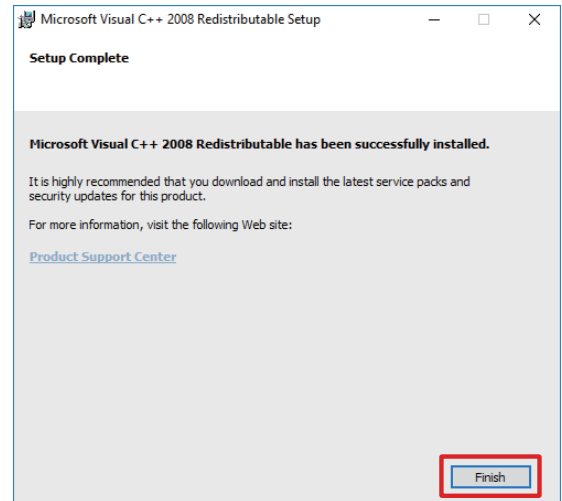
- [Microsoft Visual C++2008 Redistributable setup] may be appeared. If the message is displayed, follow the instructions in the wizard to install it.



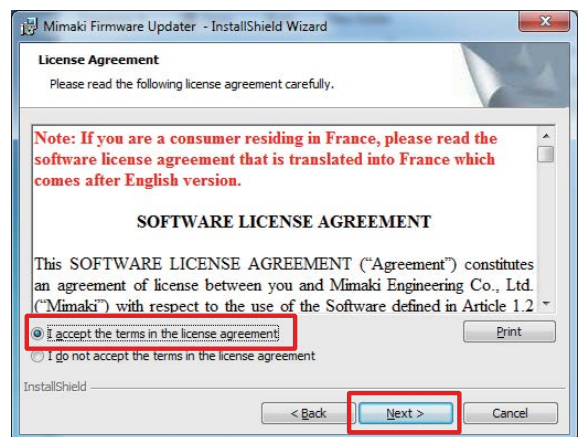
Follow the instructions in the wizard.



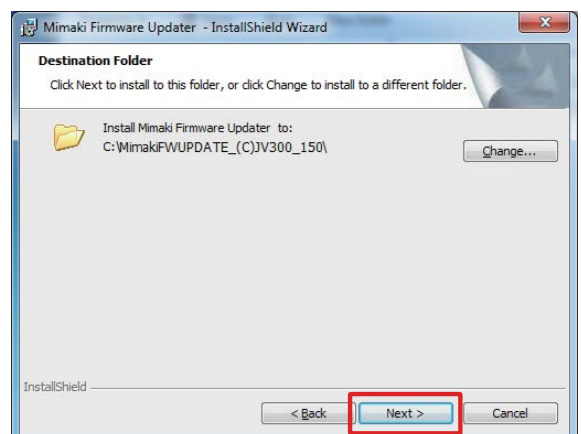
Follow the instructions in the wizard.



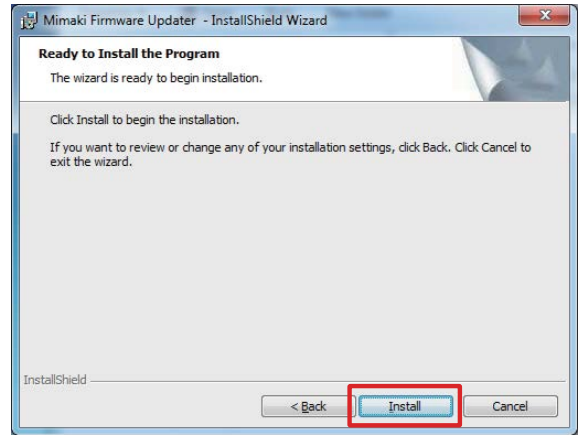
- 2** Read carefully about **SOFTWARE LICENSE AGREEMENT** and select **[I accept the terms in the license agreement]** and click **[Next]**.



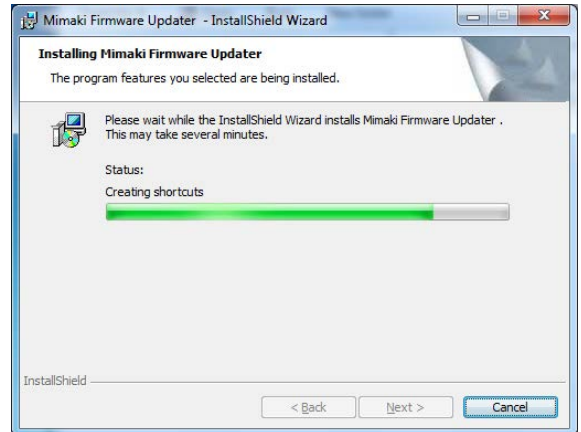
- 3** Specify the folder to which you want to install and click **[Next]**.



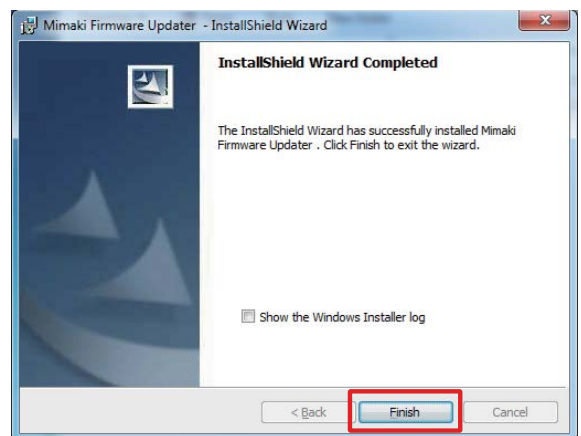
4 Click the [Install] button.



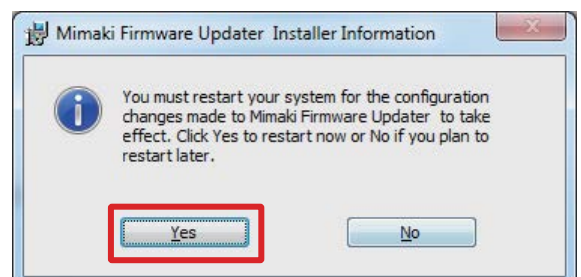
5 The program installation begins automatically.



6 Click the [Finish] button.



7 After the installation is finished, restart the computer.




Step 5. Update the FW version of the printer with [Installer downloader of FW VersionUpdater for JVCJV300/150 series].

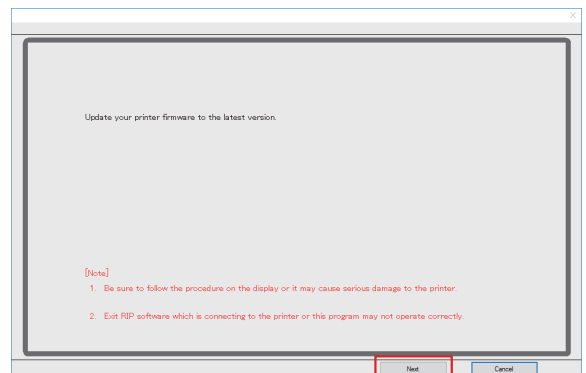
- 1 Double-click the [Installer downloader of FW VersionUpdater for JVCJV300/150 series] icon on the desktop to run the software.



- 2 Click [Next] and start the FW version update.

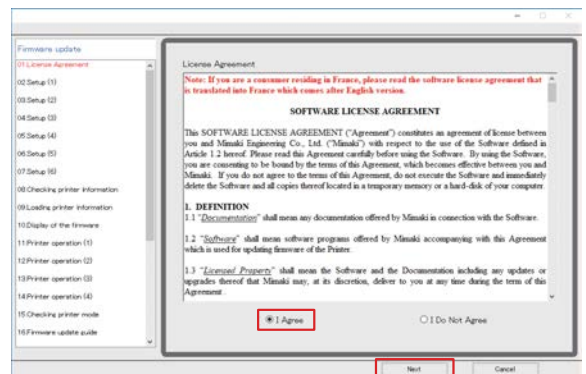


- If you do not follow the procedure step by step, the printer may not work properly.



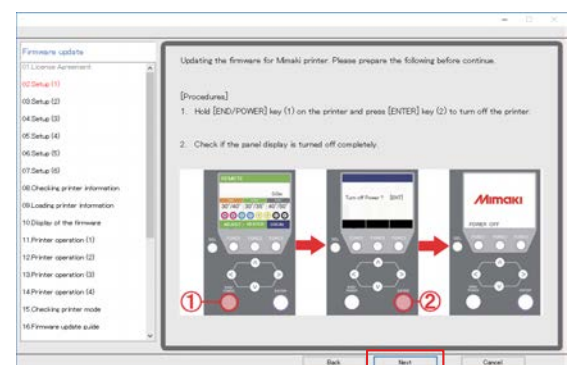
- 3 Read carefully about SOFTWARE LICENSE AGREEMENT and select [I Agree] and then click [Next].

By clicking [Next], you are accepting the agreement.



- 4 Press ①[END/POWER] key on the printer and press ② [ENTER] key to turn off the printer by following the instructions on the screen.

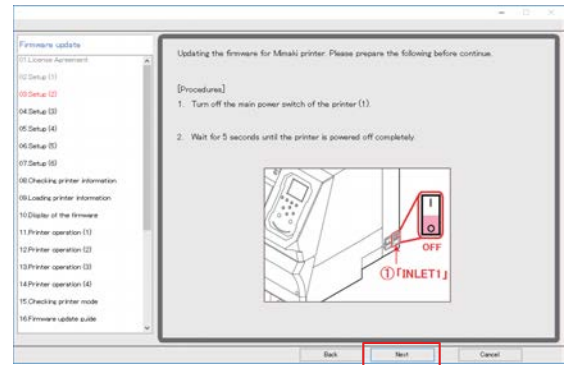
- 5 Click [Next] on the FW updater.



6 Turn OFF the main power switch ① [INLET1] of the printer.


Wait for 5 seconds until the power is turned off completely.

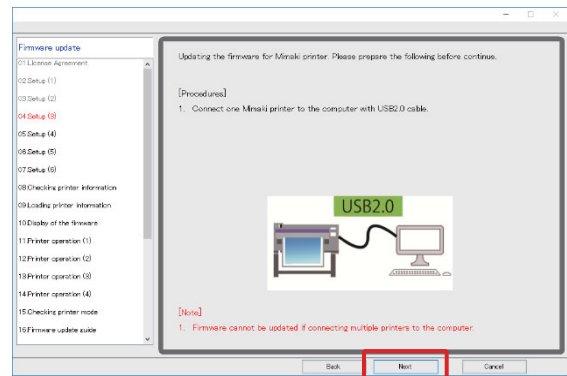
7 Click [Next] on the FW updater.



8 Connect one Mimaki printer to the computer with USB2.0 cable.

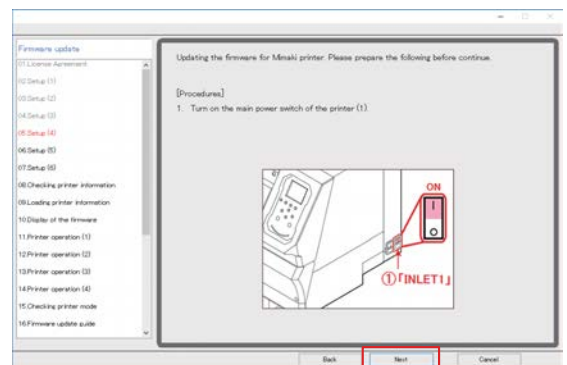
After connecting, click [Next] on the FW updater.

	<ul style="list-style-type: none">• If you are connecting 2 or more printers to the computer, an error message will appear and the FW version cannot be updated.• Please do not unplug the USB cable until completely upgrade the FW version.
---	--



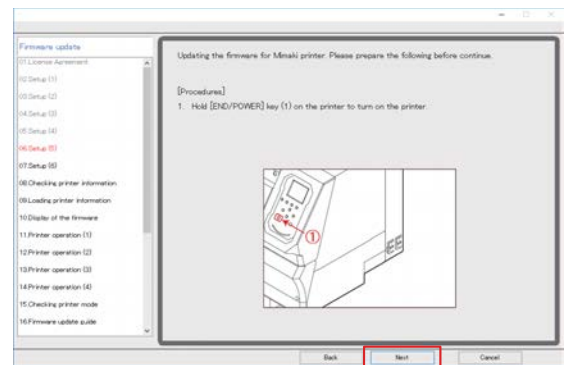
9 Turn ON the main power switch ① [INLET1] of the printer.

10 Click [Next] on the FW updater.



11 Press ①[END/POWER] key on the printer to turn on the power.

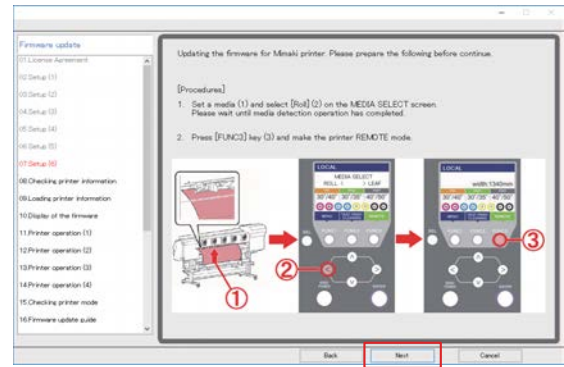
12 Click [Next] on the FW updater.



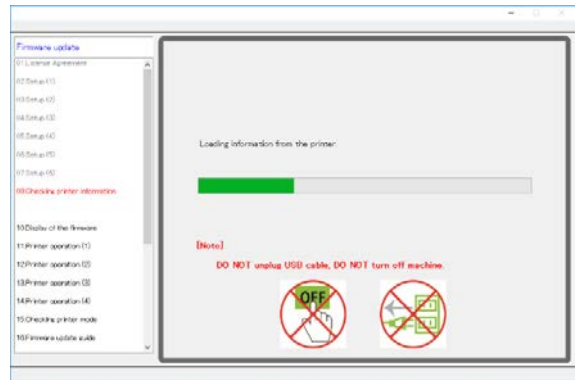
13 By following the instructions on the screen, set a media ① on the printer and press ② [<] key on the printer.

Press ③ [FUNC3]key and make the printer REMOTE mode.

14 Click [Next] on the FW updater.

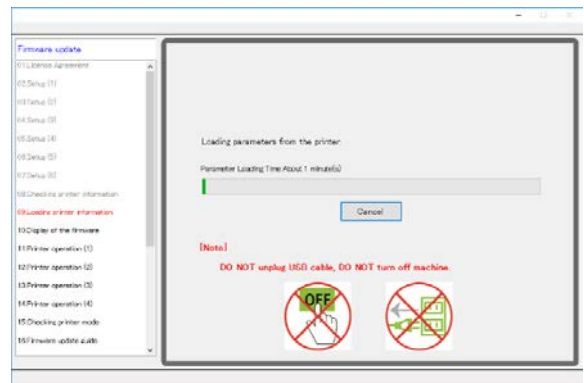
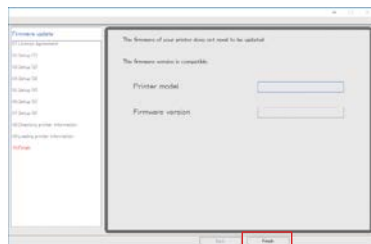


Printer information is automatically loaded into the computer.



After printer information acquisition, setting data is automatically loaded into the computer.

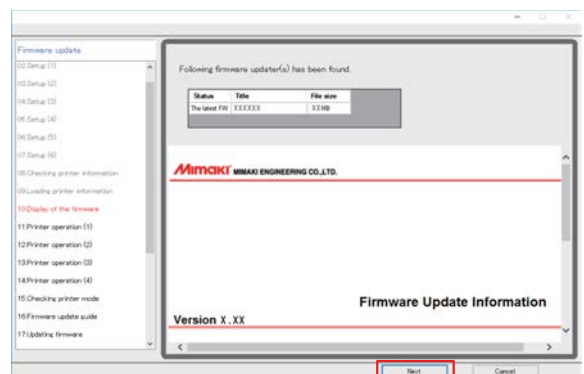
You do not need to update the FW version if the screen is shown as below. Click [Finish] and the update is complete.



15 If the FW version update is required, the latest FW version is displayed on the screen.

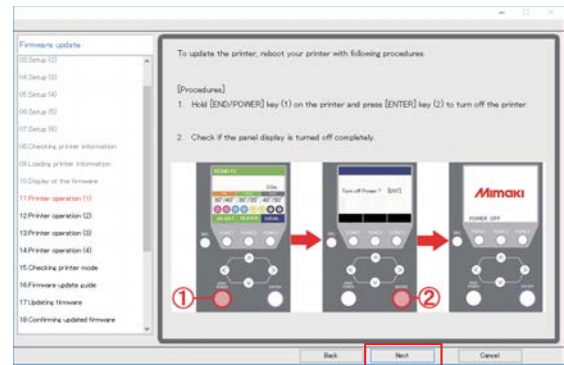
Check the latest FW version on the screen.

16 Click [Next] on the FW updater.



17 Press ① [END/POWER] key on the printer and then follow the message, and press ② [ENTER] key to turn off the printer.

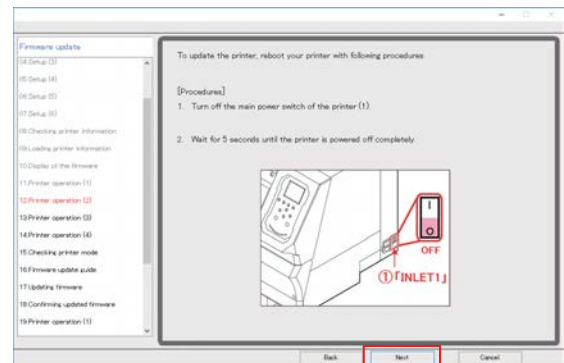
18 Click [Next] on the FW updater.



19 Turn OFF the main power switch ① [INLET1] of the printer.

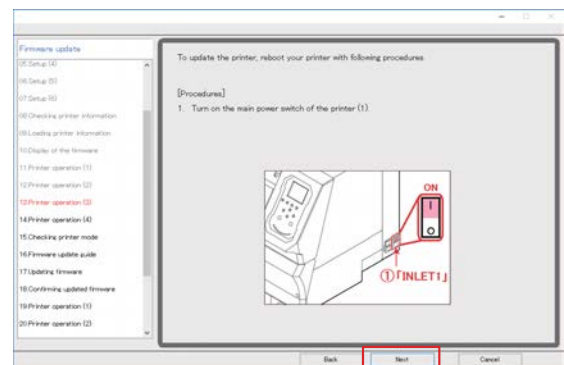
Wait for 5 seconds until the power is turned off completely.

20 Click [Next] on the FW updater.



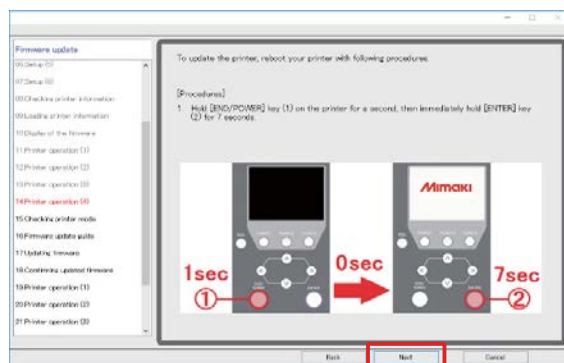
21 Turn ON the main power switch ① [INLET1] of the printer.

22 Click [Next] on the FW updater.




23 Press ① [END/POWER] key on the printer for 1 second, and then press ② [ENTER] key for 7 seconds.

24 Click [Next] on the FW updater.

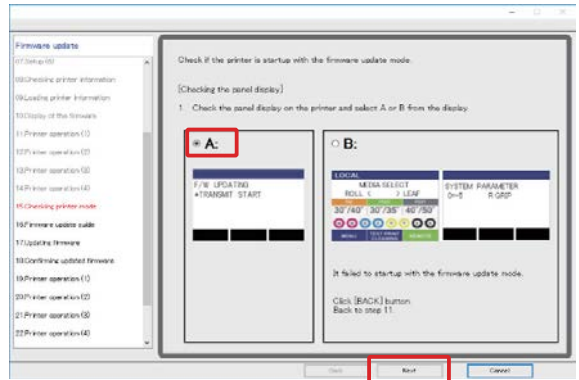


25 Select the "A" pattern on the display of the printer.


26 Click [Next] on the FW updater.



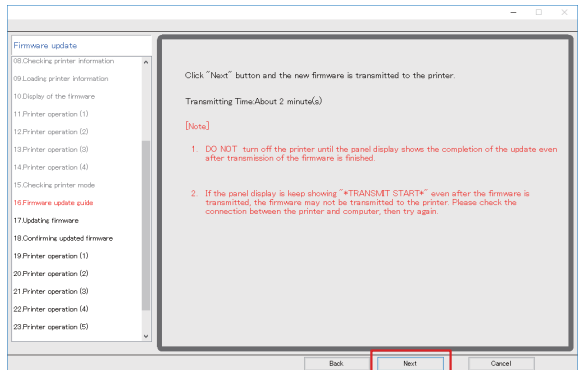
- When the "B" pattern is selected, it failed to startup with the FW update mode. Please retry from Step.5-(17) to restart the printer and follow the instruction on the screen.




27 Confirm the note and click [Next] on the FW updater.



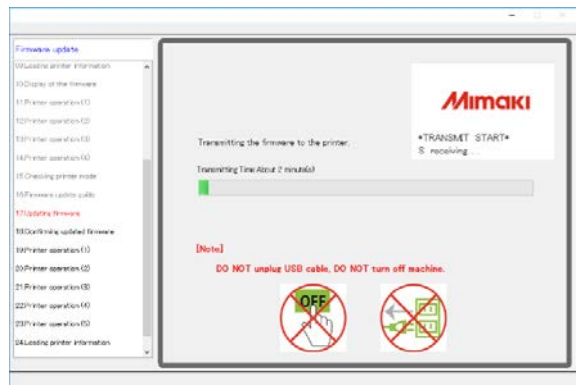
- Do not turn off the printer until the printer display shows the completion of the update even after transmission of the FW is finished. Please do not unplug the USB cable until completely upgrade the FW version.



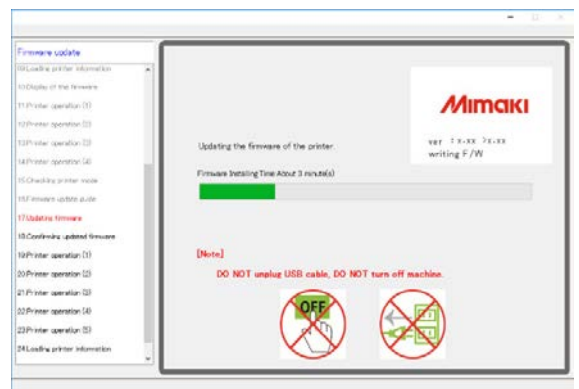
The FW is transmitted to the printer.



- Do not turn off the printer until the transmission of the FW is finished.



The upgrade program starts automatically after transmitting the FW.

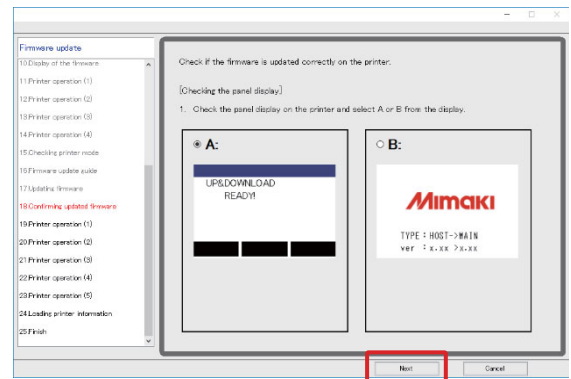


28 Select "A" or "B" on the display of the printer.

29 Click [Next] on the FW updater.

A: Go to Step.5-(30), and carry out until Step.5-(37).

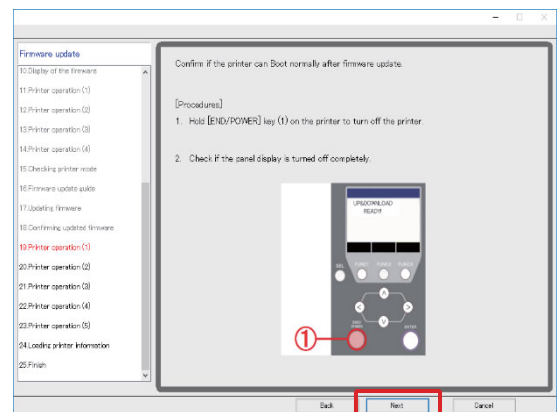
B: Go to Step.5-(38).



● When you selected the "A" pattern.

30 Press ①[END/POWER] key on the printer to turn off the printer.

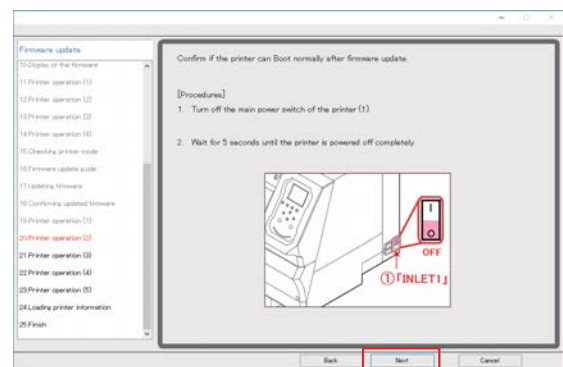
31 Click [Next] on the FW updater.



32 Turn OFF the main power switch ① [INLET1] of the printer.

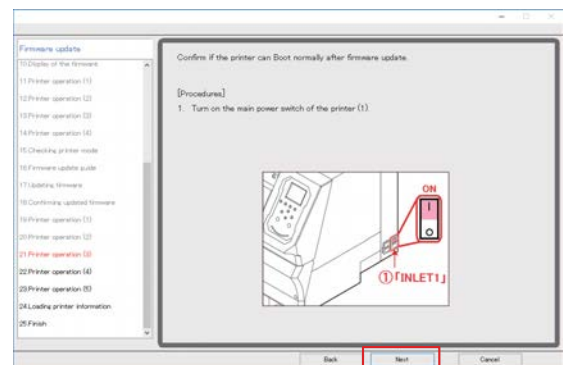
Wait for 5 seconds until the power is turned off completely.

33 Click [Next] on the FW updater.



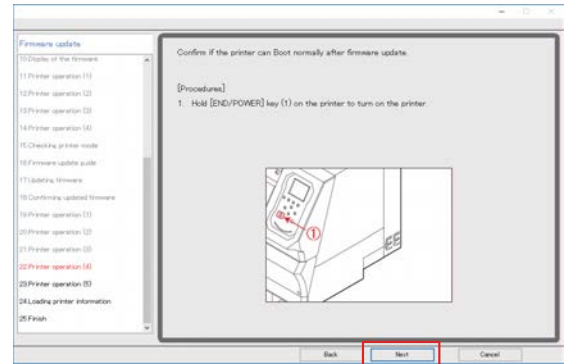
34 Turn ON the main power switch ① [INLET1] of the printer.

35 Click [Next] on the FW updater.



36 Press ①[END/POWER] key on the printer to turn on the power.

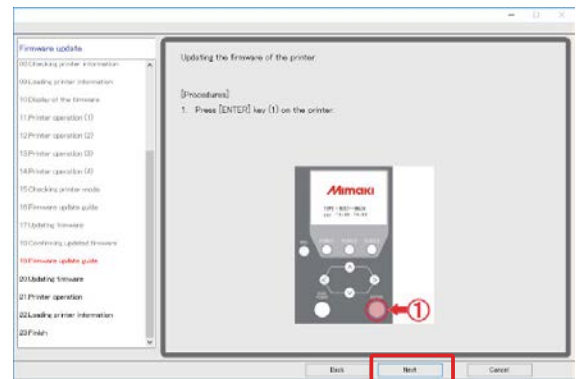
37 Click [Next] on the FW updater.
Go to Step.5-(40)



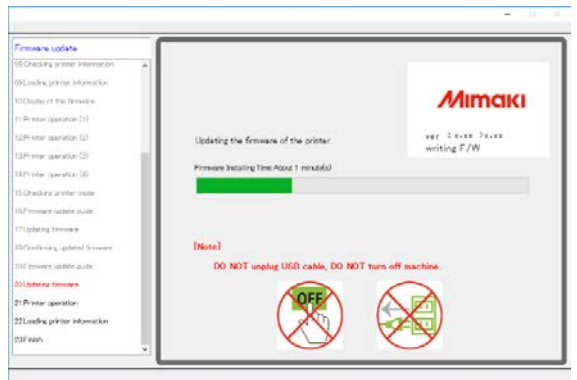
● When you selected the "B" pattern.

38 Press ① [ENTER] key on the printer.

39 Click [Next] on the FW updater.



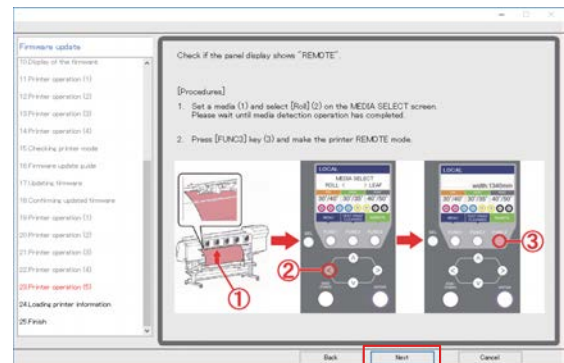
The FW version upgrade is started.



● After carrying out the "A" or "B" pattern.

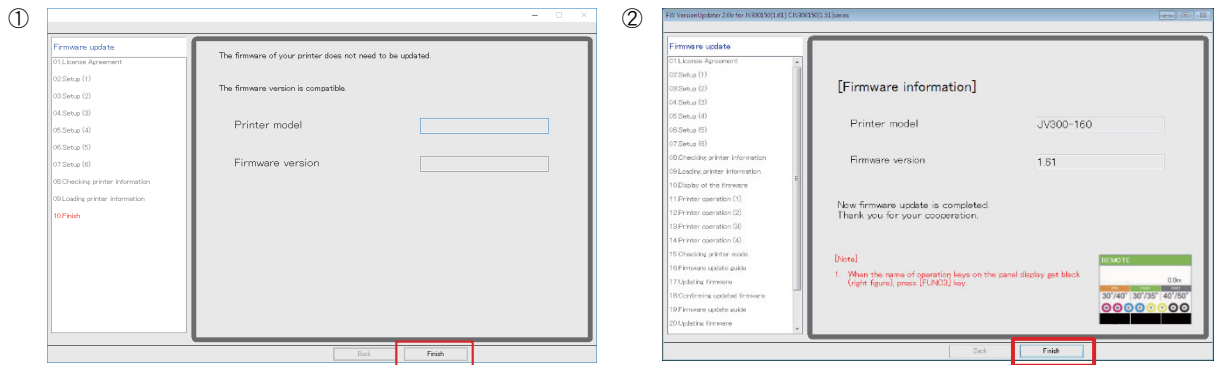
40 By following the instructions on the screen, set a media ① on the printer and press ② [<] key on the printer. Press ③ [FUNC3] key and set the printer REMOTE mode.

41 Click [Next] on the FW updater.



42 If either of the left screens* is displayed, the FW upgrade is finished. Press [finish] on the FW updater.

*There are two different displays, ① and ②, depending on the printer setting.



43 Confirm whether the printer FW has been upgraded properly.

Check the printer FW version by the same procedure as Step1. If the FW version between the printer and the FW updater is the same, the FW has been upgraded properly.

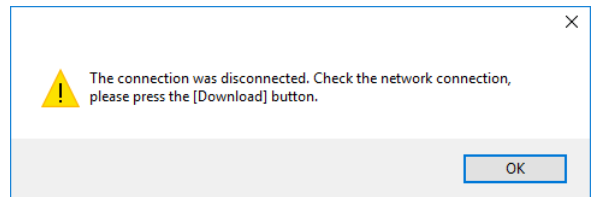
Thank you for your cooperation.

If the printer FW version is lower than the FW updater, retry from Step.5-(1).

Warning List

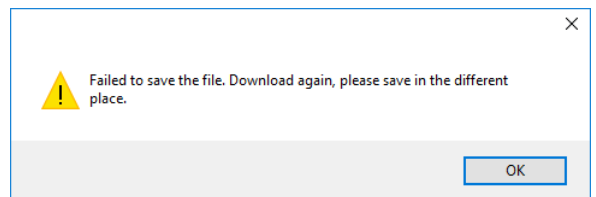
During Downloading the FW Version Updater

- 1 Check the Internet connection and try the download again.



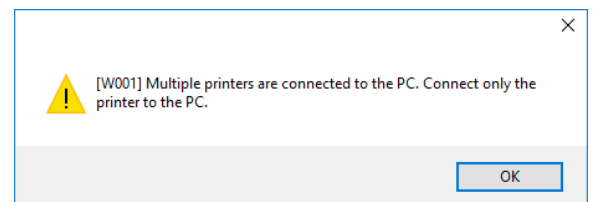
During Download the FW Version Updater

- 1 Save in the different place.



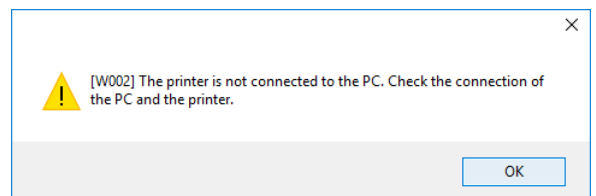
While Running the FW Version Updater [W001]

- 1 Select the [Remote] mode and retry the current step.



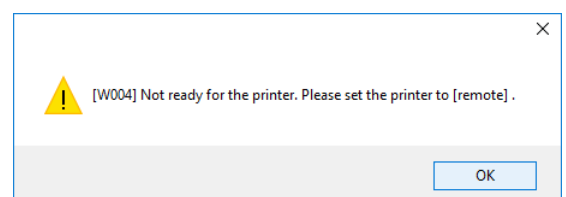
While Running the FW Version Updater [W002]

- 1 Check the connection between the printer and the computer then retry the current step.



While Running the FW Version Updater [W004]

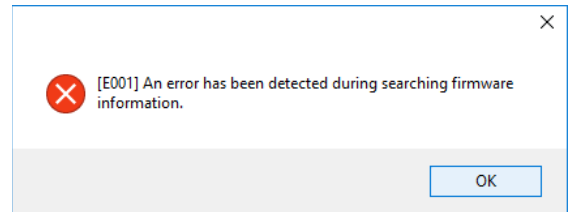
- 1 Connect the one printer only and retry the current step.



Error List

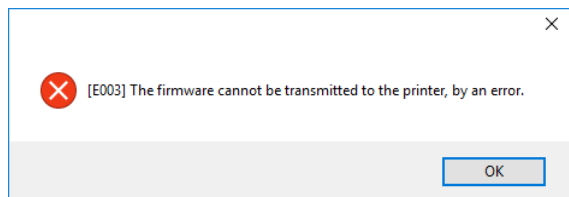
FW Version Update Error [E001]

- 1 Confirm the state of the printer and retry the current step.
- 2 Retry from Step5-1.
- 3 Call your local dealer or Mimaki subsidiary.



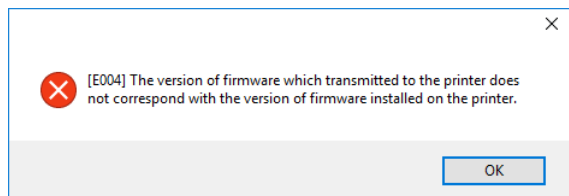
FW Version Update Error [E003]

- 1 Confirm the state of the printer and retry the current step.
- 2 Retry from Step5-1.
- 3 Call your local dealer or Mimaki subsidiary.



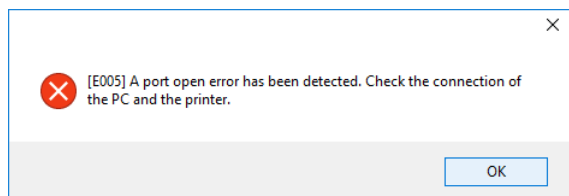
FW Version Update Error [E004]

- 1 Confirm the state of the printer and retry the current step.
- 2 Retry from Step5-1.
- 3 Call your local dealer or Mimaki subsidiary.



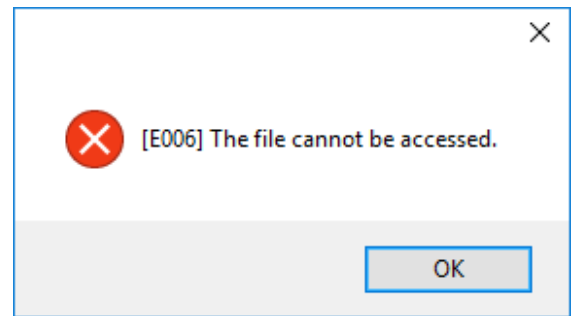
FW Version Update Error [E005]

- 1 Confirm the state of the printer and retry the current step.
- 2 Retry from Step5-1.
- 3 Call your local dealer or Mimaki subsidiary.



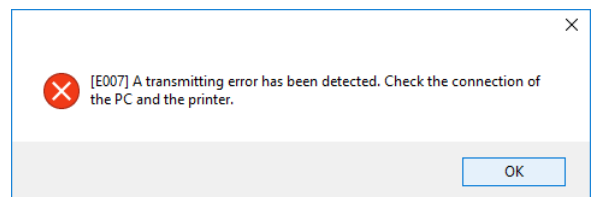
FW Version Update Error [E006]

- 1 Confirm the state of the printer and retry the current step.
- 2 Retry from Step5-1.
- 3 Call your local dealer or Mimaki subsidiary.



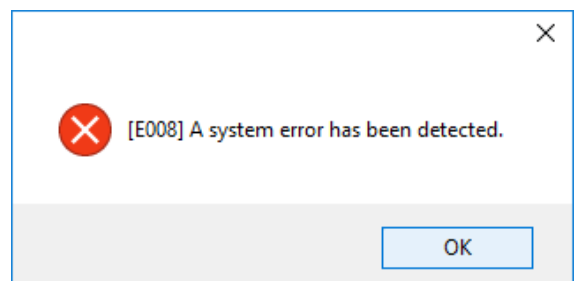
FW Version Update Error [E007]

- 1 Confirm the state of the printer and retry the current step.
- 2 Retry from Step5-1.
- 3 Call your local dealer or Mimaki subsidiary.



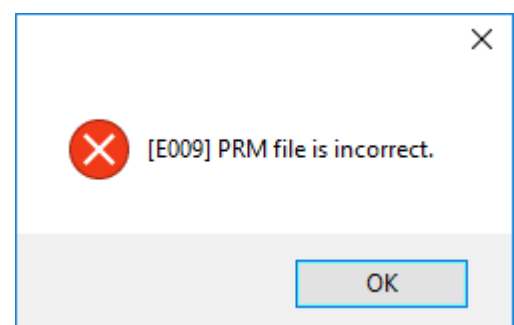
FW Version Update Error [E008]

- 1 Confirm the state of the printer and retry the current step.
- 2 Retry from Step5-1.
- 3 Call your local dealer or Mimaki subsidiary.



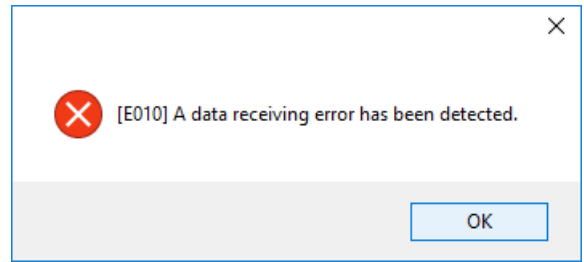
FW Version Update Error [E009]

- 1 Confirm the state of the printer and retry the current step.
- 2 Retry from Step5-1.
- 3 Call your local dealer or Mimaki subsidiary.



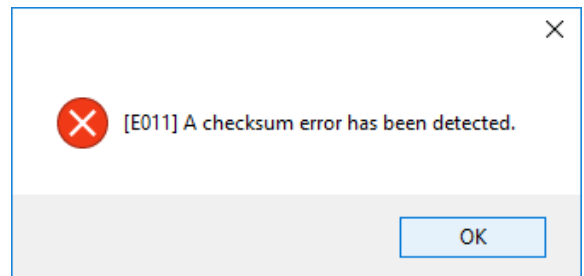
FW Version Update Error [E010]

- 1 Confirm the state of the printer and retry the current step.
- 2 Retry from Step5-1.
- 3 Call your local dealer or Mimaki subsidiary.



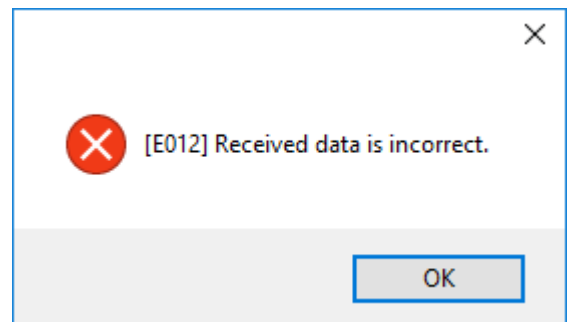
FW Version Update Error [E011]

- 1 Confirm the state of the printer and retry the current step.
- 2 Retry from Step5-1.
- 3 Call your local dealer or Mimaki subsidiary.



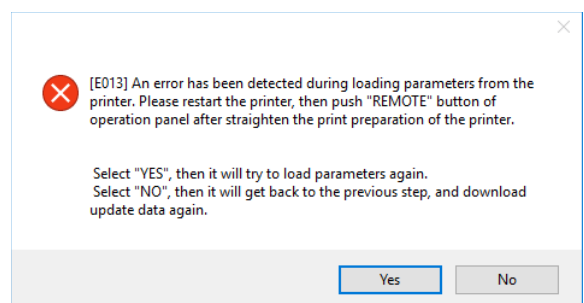
FW Version Update Error [E012]

- 1 Confirm the state of the printer and retry the current step.
- 2 Retry from Step5-1.
- 3 Call your local dealer or Mimaki subsidiary.



FW Version Update Error [E013]

- 1 Confirm the state of the printer and retry the current step.
- 2 Retry from Step5-1.
- 3 Call your local dealer or Mimaki subsidiary.





Firmware (FW) Version Updater User Manual

December, 2017

MIMAKI ENGINEERING CO.,LTD.
2182-3 Shigeno-otsu, Tomi-shi, Nagano 389-0512 JAPAN

D203259-10-08122017

MK