

Printer Cutter

CJV30-60BS
CJV30-100BS
CJV30-130BS
CJV30-160BS

**Firmware (FW)
Version Updater
User Manual**

USER MANUAL

MIMAKI ENGINEERING CO., LTD.

URL: <http://mimaki.com/>







D203264-10
Original instructions

CJV30BS series Flow of Firmware (FW) Version Update

- 1 Check the current FW version of the printer.
- 2 Download the download tool of [FW VersionUpdater for CJV30BS series] from Mimaki website
- 3 Download the installer of [FW VersionUpdater for CJV30BS series]
- 4 Install the [FW VersionUpdater for CJV30BS series].
- 5 Update the FW version of the printer with [FW VersionUpdater for CJV30BS series]

Operation procedure of FW version update of CJV30BS

Step 1. CJV30BS FW Flow of version update

- 1 Turn on the printer and press [FUNCTION] key in LOCAL.

- 2 Press the [▲][▼] key to select [COMMON SETUP]

- 3 Press the [ENTER] key.

- 4 Press the [▲][▼] key to select [INFORMATION]

- 5 Press the [ENTER] key.

- 6 Press the [▲][▼] key to select type of information
- 7 Press the [ENTER] key.
- 8 Check the FW version shown in the red frame.
If the version in the red frame is displayed as below, please update the FW version.
CJV30BS: v2.20 or more to less than 3.20


● When installing from CD

Follow Step 4 onward.

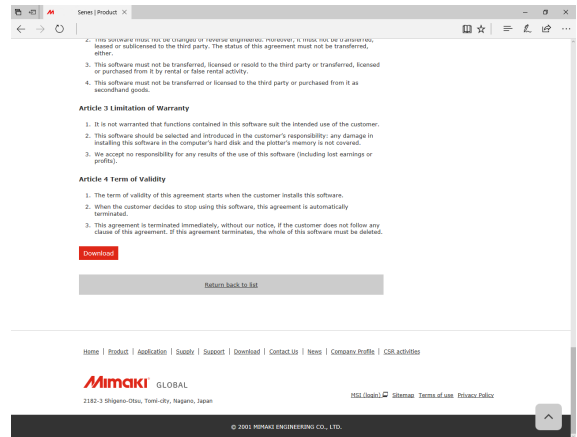
● When downloading from the Web site

Step 2. Download the download tool of [FW VersionUpdater for CJV30BS series] from Mimaki website.

1 Download the tool to download the installer of [FW VersionUpdater] from the website link below:

<http://mimaki.com/product/inkjet/print-cut/cjv30bs-series/>

Download tool size: approx.333KB



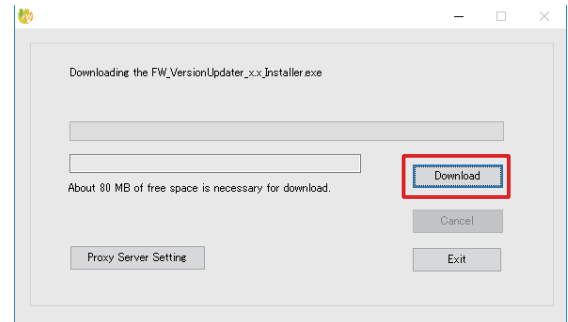
Step 3. Download the installer of [FW VersionUpdater for CJV30BS series]

1 Double-click the download tool and click the [Download] button. The installer is downloaded automatically.

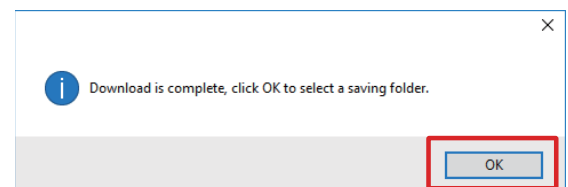
The installer is normally saved in [Download] folder.



FWUpdate_Download_Tool.exe




2 [Software download is complete] is displayed. Click the [OK] button.



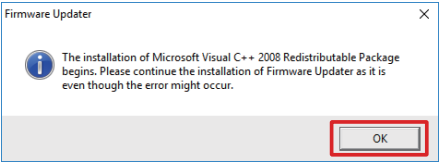
Step 4. Install the [FW VersionUpdater for CJV30BS series]

- 1 Double-click [FW_VersionUpdater_for_C-JV30BS[x.xx]series_Installer.exe] and execute the installation.



 **Caution**

- [Microsoft Visual C++2008 Redistributable setup] may be appeared. Install according to the displayed procedure.

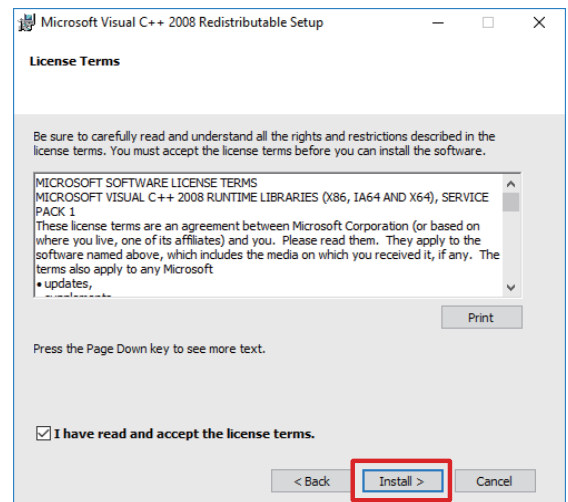
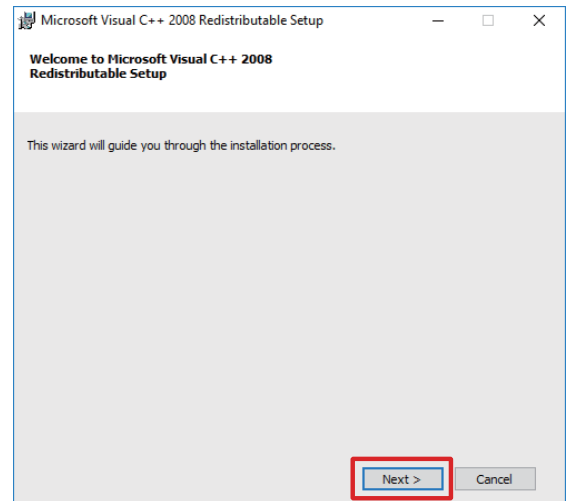
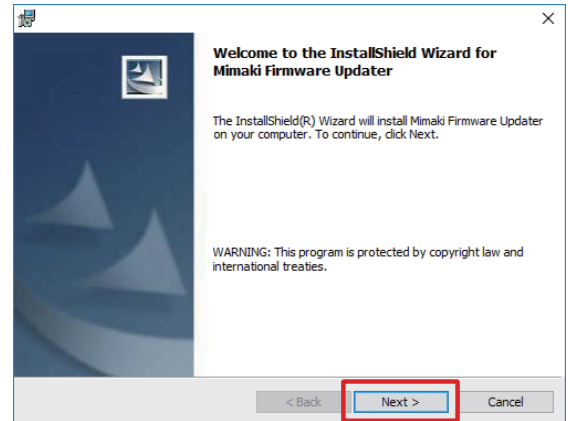


Firmware Updater

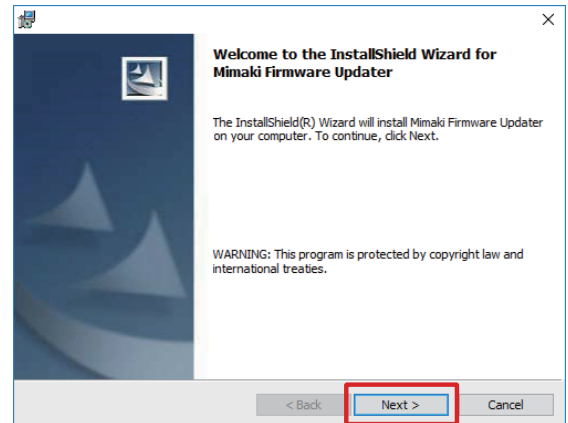
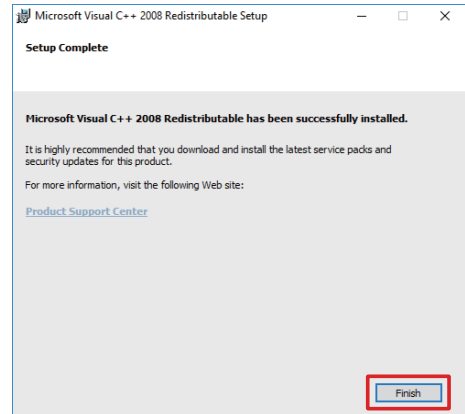
The installation of Microsoft Visual C++ 2008 Redistributable Package begins. Please continue the installation of Firmware Updater as it is even though the error might occur.

OK

Execute according to the display.

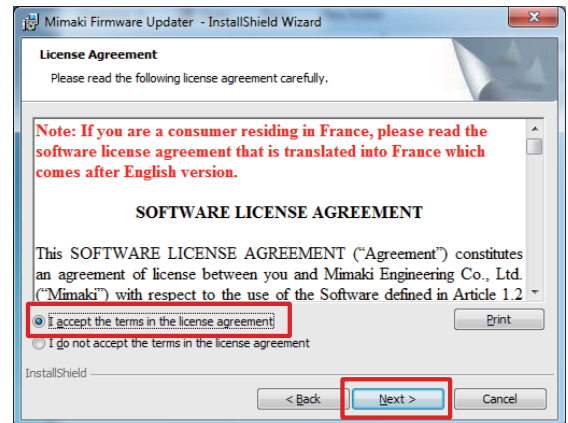


Execute according to the display.

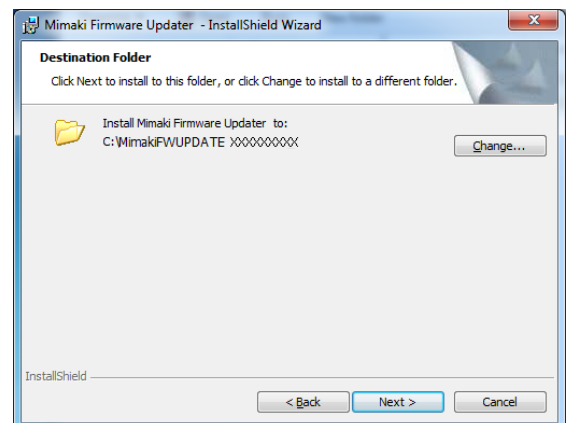


2 Read carefully about SOFTWARE LICENSE AGREEMENT

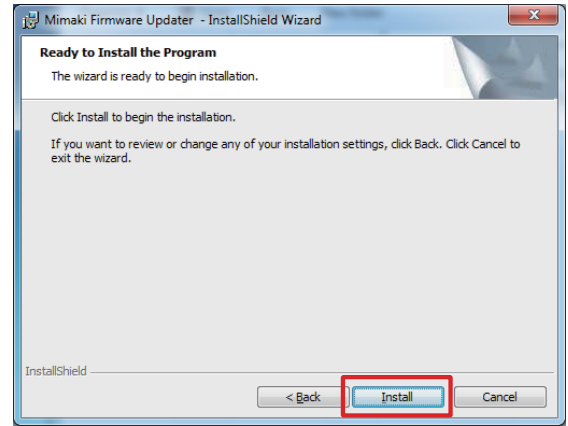
and select [I accept the terms in the license agreement] and click [Next].



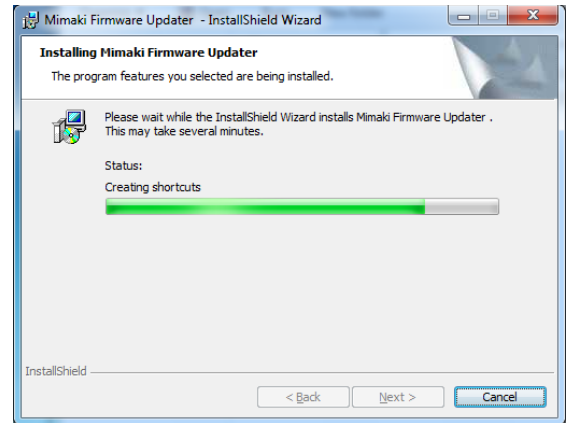
3 Specify the folder to which you want to install and click [Next].



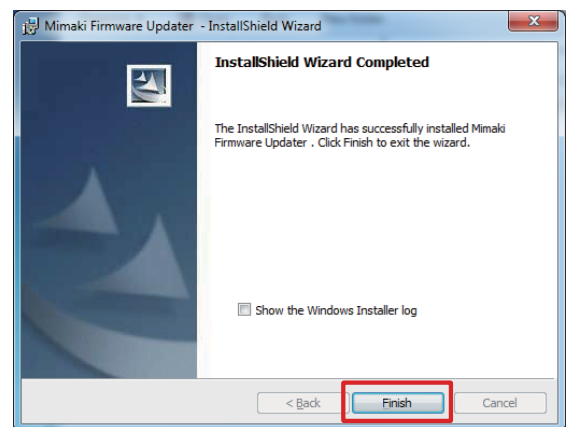
4 Click the [Install].



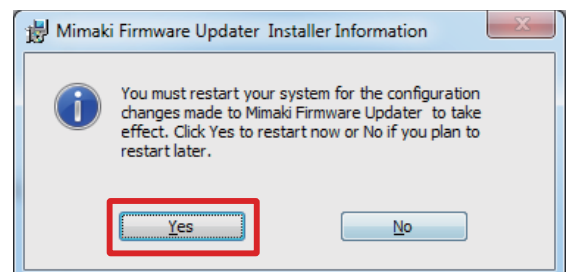
5 Installation begins.



6 Click the [Finish].

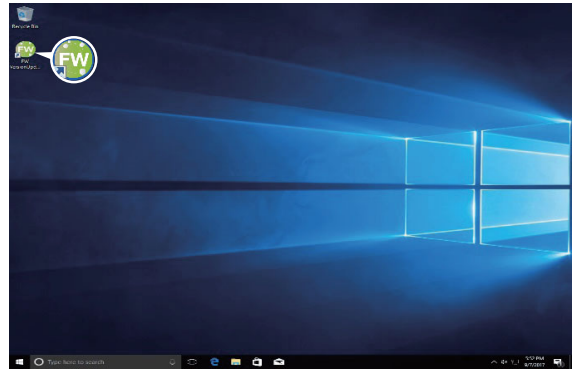


7 Click [Yes] to restart your computer.




Step 5. Update the FW version of your printer with [FW VersionUpdater forCJV30BS series].

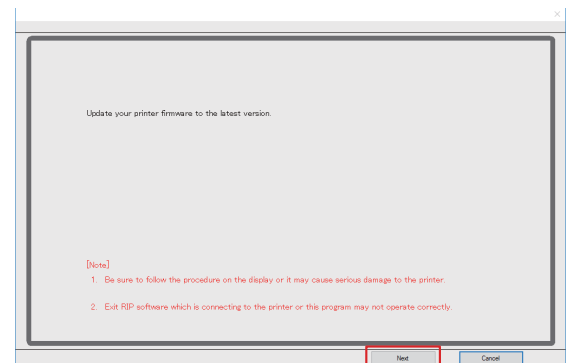
- 1 Double-click the [FW VersionUpdater for CJV30BS series] icon on the desktop to run the updater.



- 2 Click [Next] and start the FW version update. Execute according to the procedure.

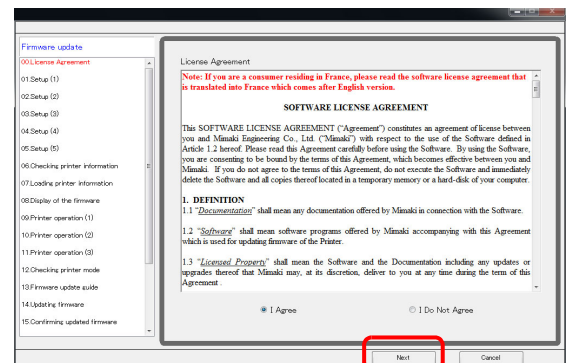


- If you do not follow the procedure step by step, the printer may not work properly.



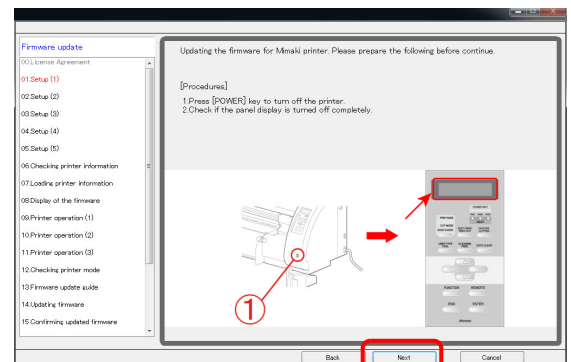
- 3 Read carefully about SOFTWARE LICENSE AGREEMENT and select [I Agree] and then click [Next].

By clicking [Next], you are accepting the agreement.



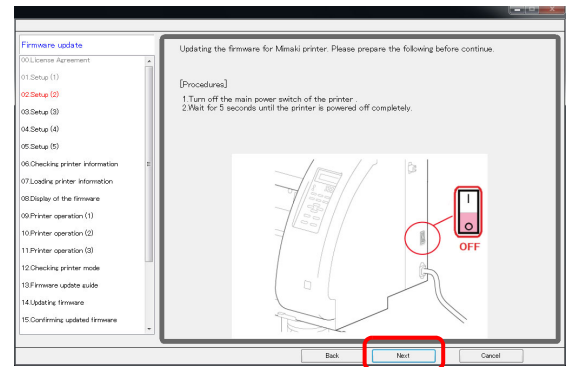
- 4 Turn OFF the printer.

- 5 Click [Next] on the PC screen.



6 Turn OFF the main power switch of the printer.
Wait for 5 seconds until the power is turned off completely.

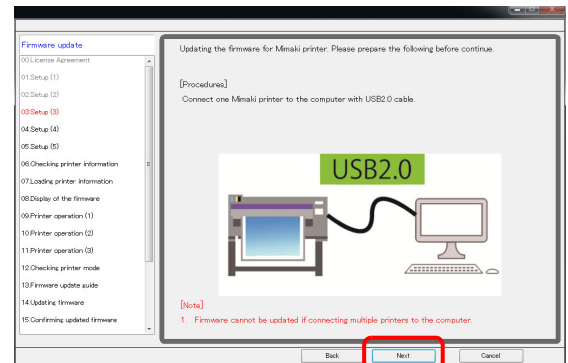
7 Click [Next] on the FW updater.



8 Connect one Mimaki printer to the computer with USB2.0 cable. After connecting, click [Next] on the FW updater.

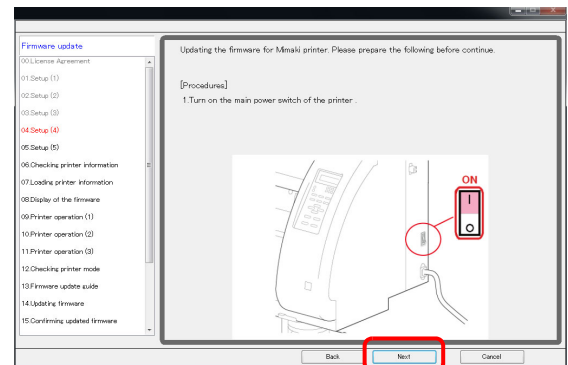


- If you are connecting 2 or more printers to the computer, an error message will appear and the FW version cannot be updated.
- Please do not unplug the USB cable until completely update the FW version.



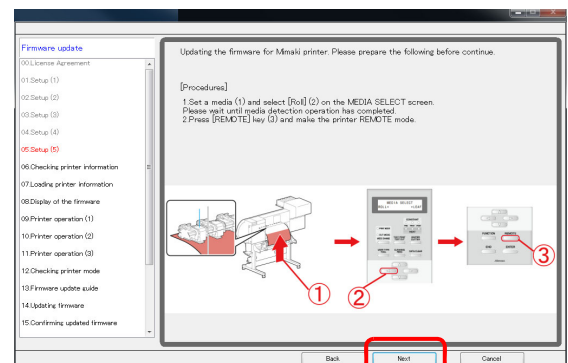
9 Turn ON the main power switch of the printer.

10 Click [Next] on the PC screen.

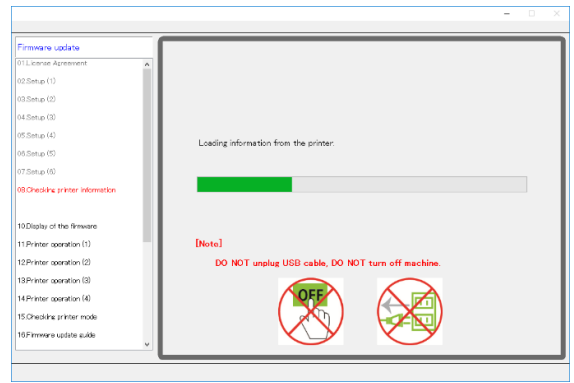


11 ① Place the media in the printer, and ② press the [<] jog key. ③ Press the [REMOTE] key.

12 Click [Next] on the PC screen.

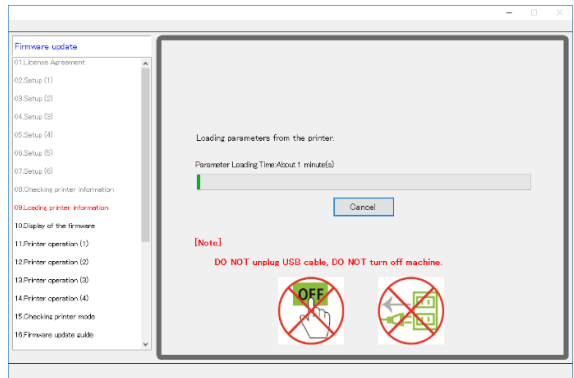
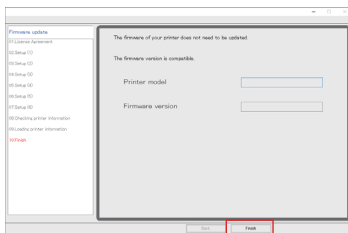


Printer information is automatically loaded into the computer.



After printer information acquisition, setting data is automatically loaded into the computer.

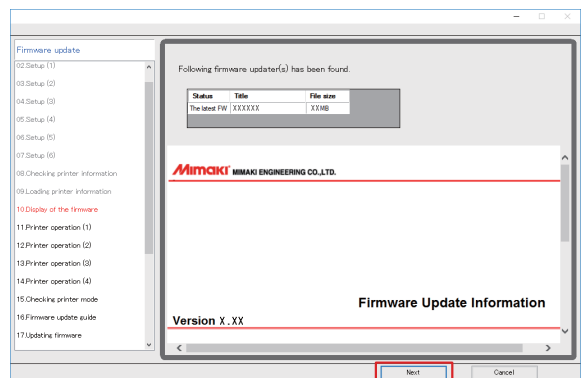
If there is no need to update FW, the following will be displayed. Click [Finish] and the update is complete.



13 If the FW version update is required, the latest FW version is displayed on the screen.

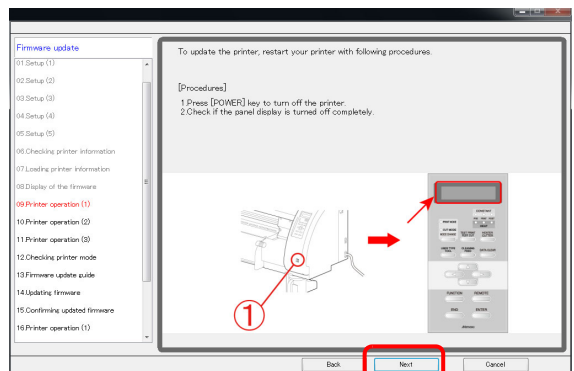
Check the latest FW version on the screen.

14 Click [Next] on the PC screen.



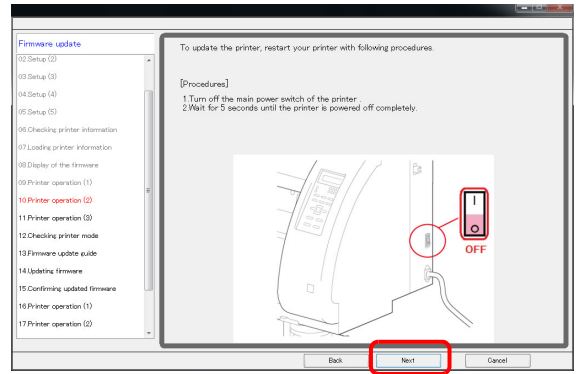
15 Turn OFF the printer.

16 Click [Next] on the PC screen.



17 Turn OFF the main power switch of the printer.
Wait for 5 seconds until the power is turned off completely.

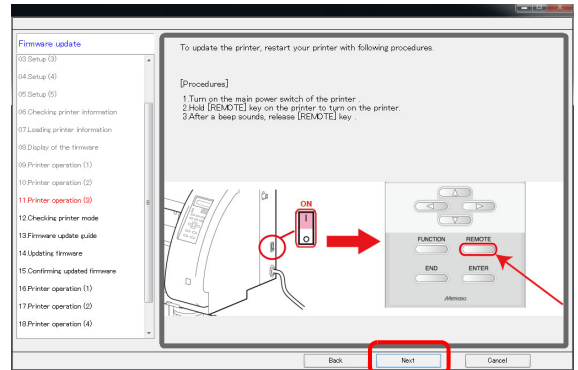
18 Click [Next] on the PC screen.



19 Turn ON the main power switch of the printer.


20 Press the [REMOTE] key on the printer control panel until the buzzer sounds.

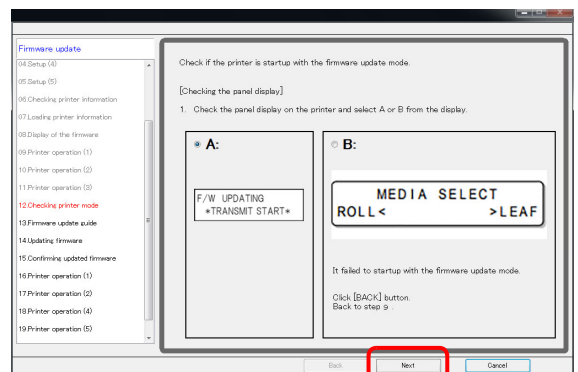
21 Click [Next].




22 Check the screen displayed on the printer's panel and select display pattern A.

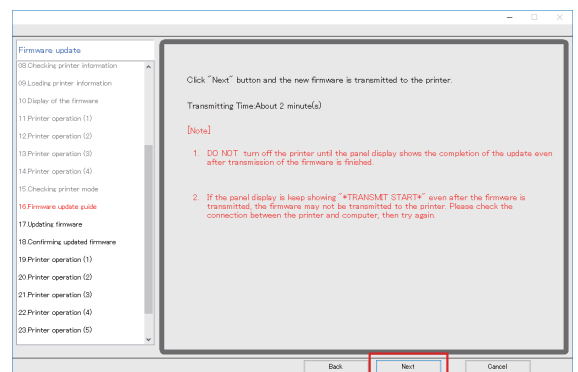
23 Click [Next].

 • If the display pattern is B, the mode for updating the FW is not activated properly. Please restart the printer according to the procedure again. Return to Step 5 (15).




24 Confirm the note and click [Next].

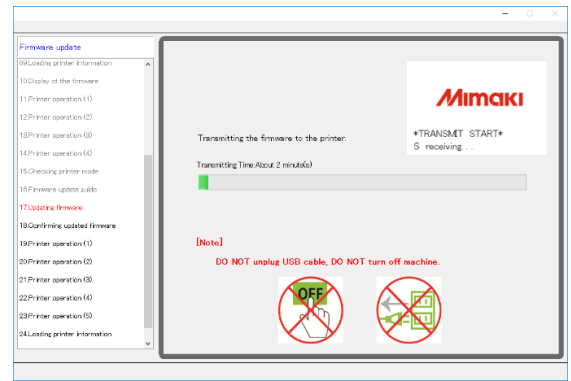
 • Do not turn off the printer until you confirm that the update is completed on the printer's LCD panel. Please do not unplug the USB cable until completely update the FW version.



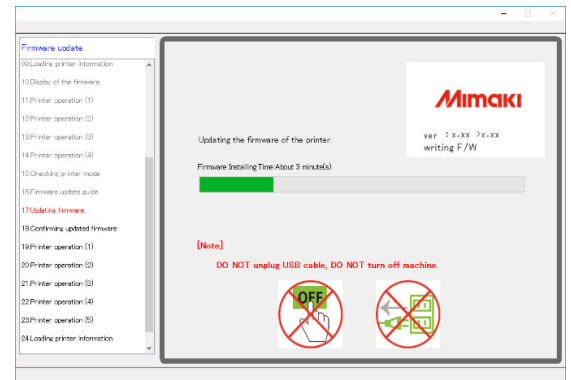
The FW is transmitted from the PC.



- Do not turn off the printer until the transmission of the FW is finished.

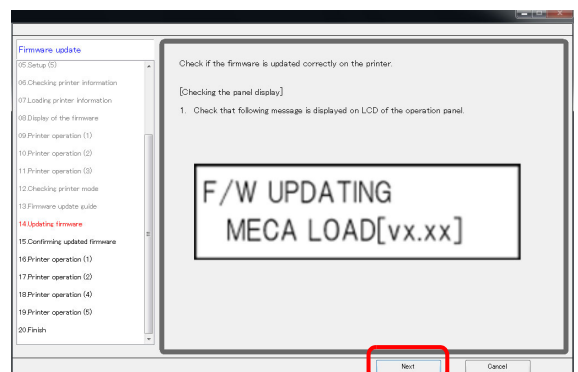


Version up will start automatically after FW is sent.



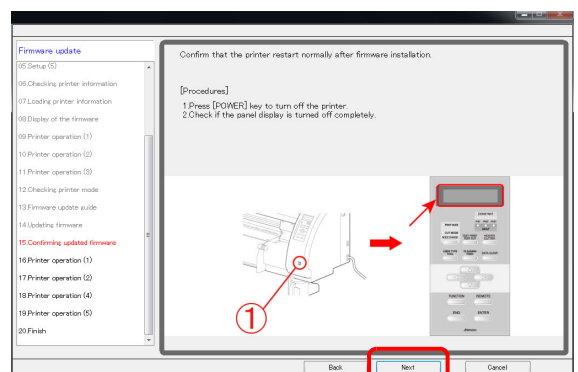
25 Check the display on the printer panel.

26 Click [Next].



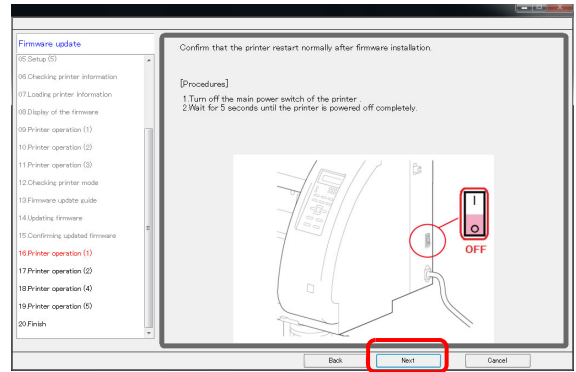
27 Turn OFF the printer.

28 Click [Next].



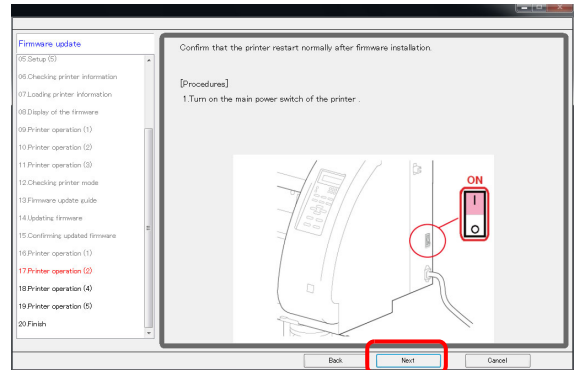
29 Turn OFF the main power switch of the printer.
Wait for 5 seconds until the power is turned off completely.

30 Click [Next] on the FW updater.



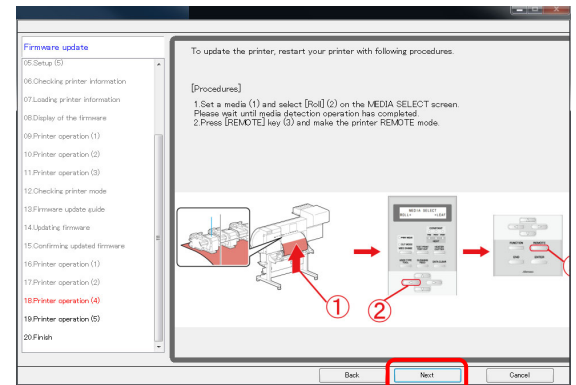
31 Turn ON the main power switch of the printer.

32 Click [Next].

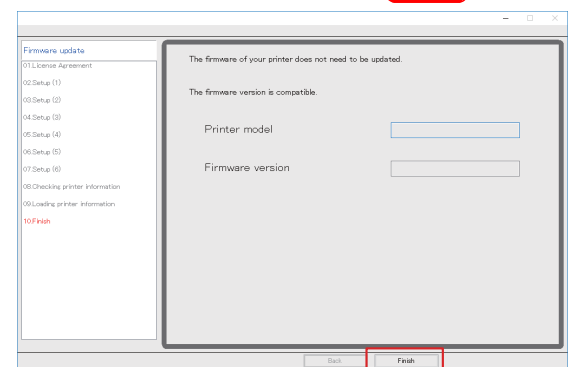


33 Detect media and set the printer in remote status.

34 Click [Next] on the PC screen.



35 The screen on the right is displayed and the version update is completed.



36 Again confirm that the FW on the printer side is the same as the FW version displayed on the PC screen by the same procedure as Step1.

If the FW version between the printer and the FW updater is the same, it is finished.

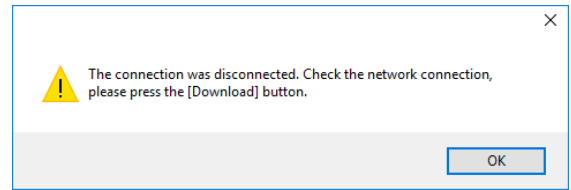
Thank you for your cooperation.

If the PC screen version is different from the machine version, perform again from Step.5-1.

Warning List

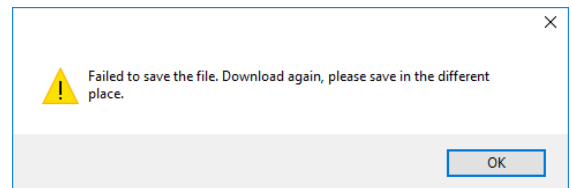
During Downloading the FW Version Updater

- 1 Check the Internet connection and try the download again.



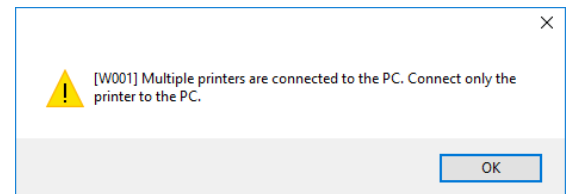
During Downloading the FW Version Updater

- 1 Save in the different place.



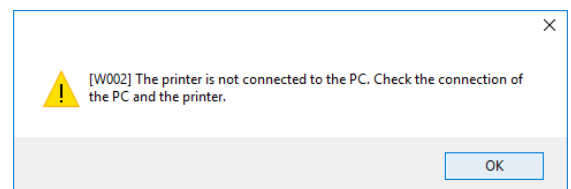
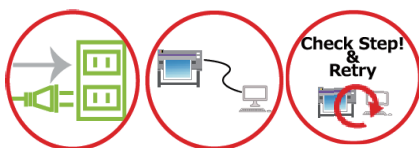
While Running the FW Version Updater[W001]

- 1 Set the printer to the [Remote] status and retry.



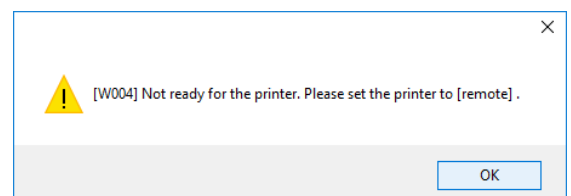
While Running the FW Version Updater[W002]

- 1 Connect the printer to the PC and retry.



While Running the FW Version Updater[W004]

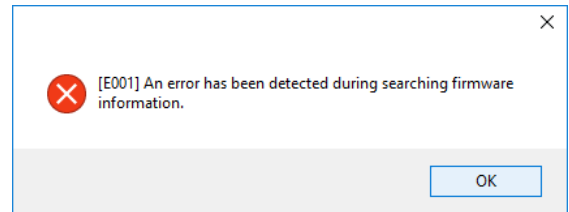
- 1 Connect only one printer and try again.



Error List

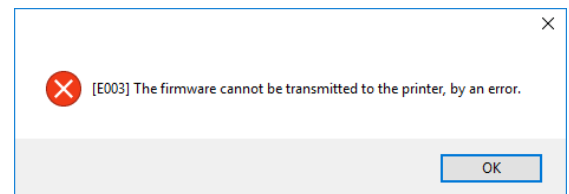
FW Version Update Error[E001]

- 1 Confirm the state of the printer and retry.
- 2 Retry from Step5-1.
- 3 Call your local dealer or Mimaki subsidiary.



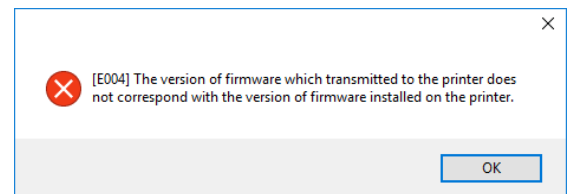
FW Version Update Error[E003]

- 1 Confirm the state of the printer and retry.
- 2 Retry from Step5-1.
- 3 Call your local dealer or Mimaki subsidiary.



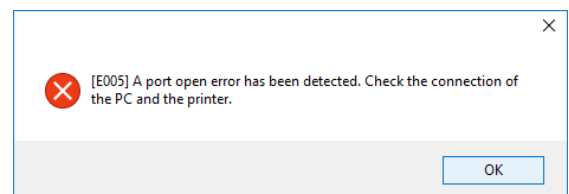
FW Version Update Error[E004]

- 1 Confirm the state of the printer and retry.
- 2 Retry from Step5-1.
- 3 Call your local dealer or Mimaki subsidiary.



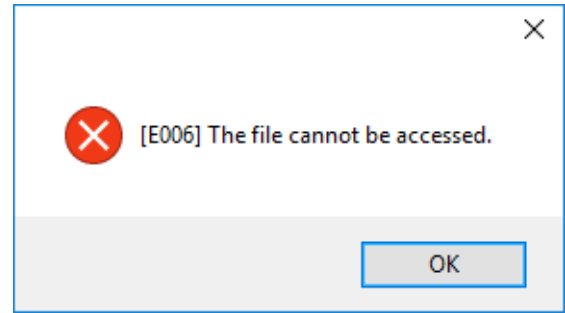
FW Version Update Error[E005]

- 1 Confirm the state of the printer and retry the current step.
- 2 Retry from Step5-1.
- 3 Call your local dealer or Mimaki subsidiary.



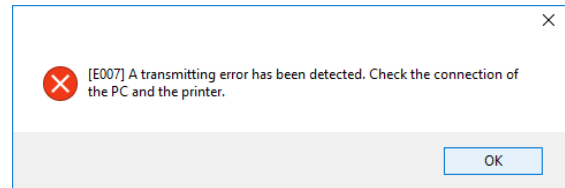
FW Version Update Error[E006]

- 1 Confirm the state of the printer and retry.
- 2 Retry from Step5-1.
- 3 Call your local dealer or Mimaki subsidiary.



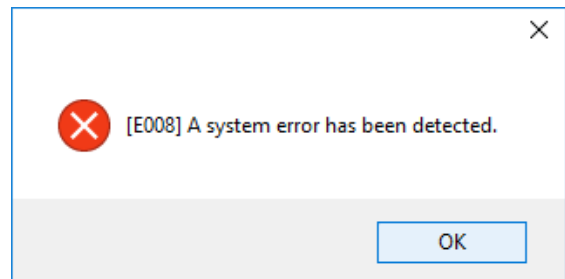
FW Version Update Error[E007]

- 1 Confirm the state of the printer and retry.
- 2 Retry from Step5-1.
- 3 Call your local dealer or Mimaki subsidiary.



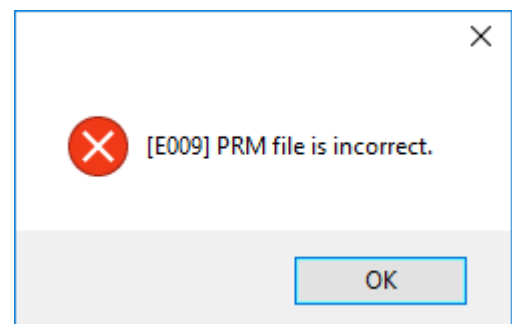
FW Version Update Error[E008]

- 1 Confirm the state of the printer and retry the current step.
- 2 Retry from Step5-1.
- 3 Call your local dealer or Mimaki subsidiary.



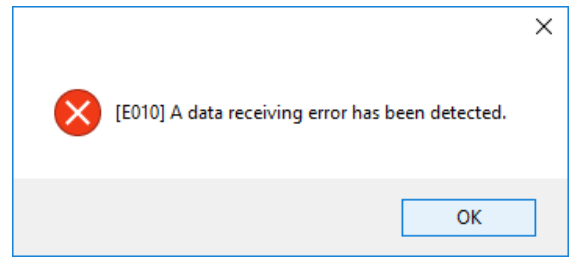
FW Version Update Error[E009]

- 1 Confirm the state of the printer and retry.
- 2 Retry from Step5-1.
- 3 Call your local dealer or Mimaki subsidiary.



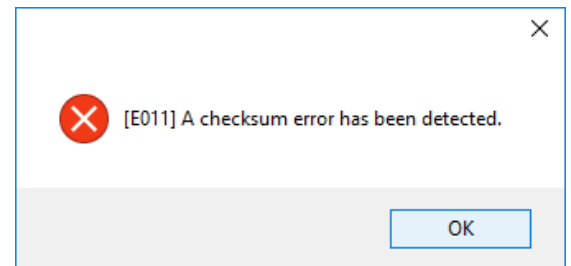
FW Version Update Error[E010]

- 1 Confirm the state of the printer and retry.
- 2 Retry from Step5-1.
- 3 Call your local dealer or Mimaki subsidiary.



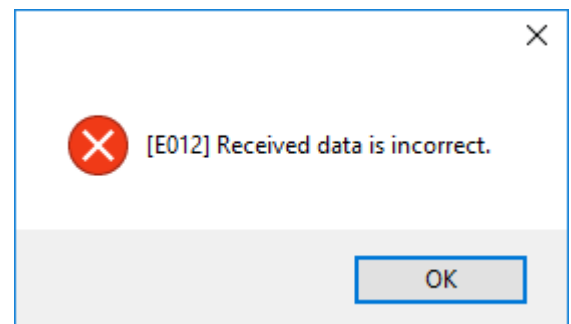
FW Version Update Error[E011]

- 1 Confirm the state of the printer and retry the current step.
- 2 Retry from Step5-1.
- 3 Call your local dealer or Mimaki subsidiary.



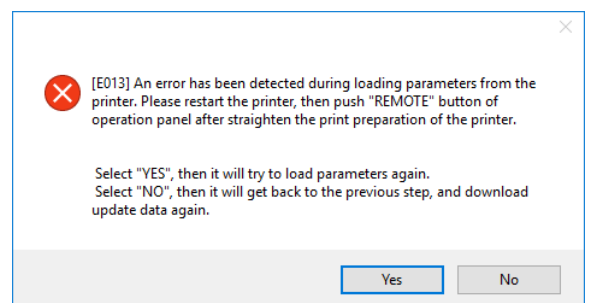
FW Version Update Error[E012]

- 1 Confirm the state of the printer and retry.
- 2 Retry from Step5-1.
- 3 Call your local dealer or Mimaki subsidiary.



FW Version Update Error[E013]

- 1 Confirm the state of the printer and retry the current step.
- 2 Retry from Step5-1.
- 3 Call your local dealer or Mimaki subsidiary.





Firmware (FW) Version Updater User Manual

January, 2018

MIMAKI ENGINEERING CO.,LTD.

2182-3 Shigeno-otsu, Tomi-shi, Nagano 389-0512 JAPAN

D203264-10-1901208

MK