

**Mimaki**



# RasterLink Pro II

**Software RIP**

## **Installation Guide**

This manual explains how to set PC for installing Raster Link Pro II.

### **MIMAKI ENGINEERING CO., LTD.**

TKB Gotenyama Building, Kitashinagawa, Shinagawa-ku, Tokyo 141-0001, Japan

Phone: +81-3-5420-8671 Fax: +81-3-5420-8687

URL: <http://www.mimaki.co.jp/>

E-mail: [trading@mimaki.co.jp](mailto:trading@mimaki.co.jp)

Version 1.10

D201554

---

---


# The kinds of manuals and how to use them

This product comes with following manuals.

## Installation Guide

This manual explains about the following.

- How to set up PC (Windows 2000, Windows XP) in order to install Raster Link Pro II.
- How to install a printer driver into a client PC and how to set up.



you are now  
reading this  
manual.

## Reference Guide

There are two kinds of reference guides.

One is for common settings to each printer and the other is for special settings to each printer.

They explain necessary setting items of the functions and operation in order to use Raster Link Pro II.

Read the proper reference guide for your printer.

Adobe, the Adobe logo, Photoshop, Illustrator and PostScript are trademarks of Adobe System Incorporated. Apple, Macintosh, Power Macintosh, Mac OS and Mac OSX are registered trademarks of Apple Computer, Inc. Microsoft, Windows, Windows 2000 and Windows XP are trademarks of Microsoft Corporation and other countries.

PC MACLAN is registered trademarks of Miramar Systems, Inc.

All brand names and product names are trademarks or registered trademarks of their respective companies.

---

## Notice

- It is strictly prohibited to write or copy a part or whole of this document without our approval.
- The contents of this document may be subject to change without notice.
- Due to improvement or change of this software, the description of this document could be partially different in specification, for which your understanding is requested.
- It is strictly prohibited to copy this software to other disk (excluding the case for making backup) or to load on the memory for the purpose other than executing it.
- With the exception of what is provided for in the warranty provisions of MIMAKI ENGINEERING CO., LTD., we do not assume any liability against the damages (including but not limited to the loss of profit, indirect damage, special damage or other monetary damages) arisen out of the use or failure to use of this product. The same shall also apply to the case even if MIMAKI ENGINEERING CO., LTD. had been notified of the possibility of arising damages in advance. As an example, we shall not be liable for any loss of the media (works) made using this product or indirect damages caused by the product made using this media.

## About this manual

This manual explains how to set PC (Windows 2000, Windows XP PC) for installing Raster Link Pro II and the procedure for installing a printer driver in a client PC.

### Notations

Menu items are enclosed in quotation marks like “Full Color”.

Buttons in dialog box are framed like .

### Symbol



Indicates a caution you must observe when operating the product.



Describes a useful procedure.



Shows the number of the page that has related contents.

---

---

# Table of Contents

The kinds of manuals and how to use them.....	2
Notice .....	3
About this manual .....	3
System requirements .....	6
Installing PC for Raster Link Pro II.....	6
Client PC for Windows.....	6
Client PC for Macintosh (Without OSX).....	6
Client PC for Macintosh (OSX).....	6
<b>Set PC with Raster Link Pro II installed.....</b>	<b>7</b>
Set the Control Panel .....	8
Windows XP Control Panel.....	8
Windows 2000 Control Panel .....	9
Change the Host Name .....	10
Set the Local Security Policy (with Windows 2000) .....	13
PC MACLAN installation .....	15
Raster Link Pro II Installation .....	17
Install the IEEE1394 Driver.....	17
Install the USB 2.0 Driver .....	17
Set the Raster Link Pro II CD .....	18
Install the Raster Link Pro II.....	19
Starting Raster Link Pro II .....	22
<b>Print from Client PCs.....</b>	<b>23</b>
Method for printing from client PC.....	24
Printing by using hot folder .....	24
Printing by using printer driver .....	24
Set PC with Raster Link Pro II installed.....	25

Guest account settings.....	25
For Windows XP .....	25
For Windows 2000 .....	27
Enable file sharing (with Windows XP) .....	29
<b>Set Windows 98SE/Me Client PC .....</b>	<b>31</b>
Install the Printer Driver.....	31
Copy the PPD File .....	31
Download the Adobe PS.....	32
Install the Adobe PS .....	34
<b>Set Windows 2000/XP Client PC .....</b>	<b>39</b>
Install the printer driver.....	39
<b>Set Macintosh Client PC (OS 8.6 ~ 9.2.2) .....</b>	<b>44</b>
Hot folder setting by Chooser.....	44
Install the Macintosh printer driver .....	46
Download the printer driver for Macintosh client PC.....	46
Install the PPD File.....	49
Remove the Old PPD File.....	49
Installing PPD files .....	51
Printer setting by Chooser.....	52
<b>Set Macintosh Client PC (OS 10.3).....</b>	<b>54</b>
Hot folder setting by Finder .....	54
Printer setting .....	56
<b>Set Macintosh Client PC (OS 10.4).....</b>	<b>59</b>
Hot folder setting by Finder .....	59
Printer setting .....	61
<b>Confirm the address.....</b>	<b>63</b>
<b>Re-Install Raster Link Pro II .....</b>	<b>64</b>
<b>Uninstall Raster Link Pro II.....</b>	<b>65</b>
Check that the shared folder contents are deleted .....	65
Check that the hot folder contents are deleted .....	66
Check that the PPD folder contents are deleted .....	68
Uninstall Raster Link Pro II.....	70
<b>Updating version of Raster Link Pro II .....</b>	<b>72</b>

---

---

# System requirements

## Installing PC for Raster Link Pro II

The following conditions are required to install Raster Link Pro II.

OS	: Microsoft® Windows® 2000 SP2 or later <sup>*1</sup>
	: Microsoft® Windows® XP Professional Edition SP1 or later
	: Microsoft® Windows® XP Home Edition SP1 or later
CPU	: Pentium4 2.0GHz or higher
Chip set	: Intel® genuine chip set
Memory	: 512 MB or more
HDD	: 30GB capacity recommended (NTFS format <sup>*2</sup> )
Interface	: IEEE1394 <sup>*3</sup> , Ethernet Port 10/100/1000 Base-T <sup>*4</sup> , USB1.1/2.0 <sup>*5 *6</sup>
PC-MACLAN	: Version 9 or later <sup>*7</sup>

## Client PC for Windows

### OS

Windows 98SE, Windows Me, Windows2000 Professional, Windows XP Home Edition (SP1 or later), WindowsXP Professional Edition (SP1 or later)

## Client PC for Macintosh (Without OSX)

### OS

Mac OS 8.6~9.2.2

## Client PC for Macintosh (OSX)

### OS

Mac OS 10.3.3 or later

Classic Environment in Mac OSX (Mac OS 9.1 or later)

\*1 : When using the USB 2.0 interface with Windows 2000, Service Pack 4 or higher must be used.

\*2 : With the FAT32 format, problems occur when using hot folders from a Macintosh client.

\*3 : IEEE1394 Interface cannot be used for some printers. Do not connect to a printer via a repeater hub.

\*4 : When Macintosh is connected as a client PC, NIC that supports AppleTalk is needed.

\*5 : Needed to use the dongle. Do not connect the dongle via a USB hub.

\*6 : If a printer with a USB 2.0 interface is connected, the PC must have a USB 2.0 port.

Do not connect the printer via a USB hub.

\*7 : Required when connecting from a Macintosh client.

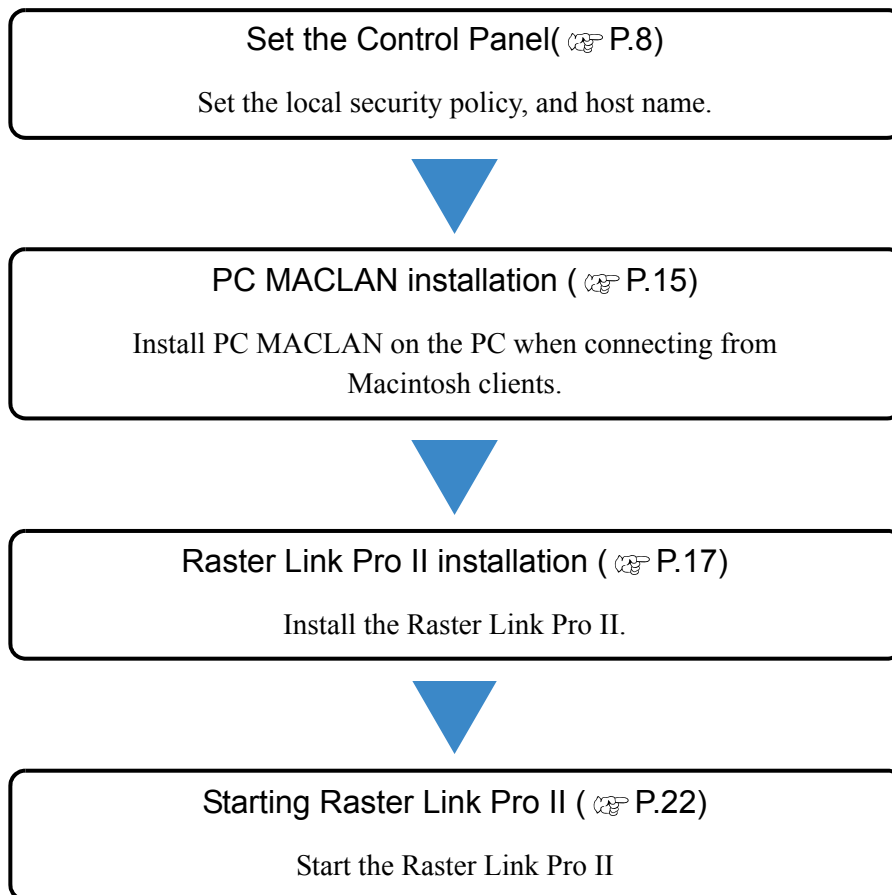
# Set PC with Raster Link Pro II installed

Raster Link Pro II PC is a PC on which Raster Link Pro II is to be installed or already installed.

This is the explanation about necessary settings and the procedure of installation for operating Raster Link Pro II properly.



In this Installation Guide, the Raster Link Pro II PC host name is described as “RasterLink”. Where the explanation mentions “RasterLink”, substitute the host name of your Raster Link Pro II PC.



---

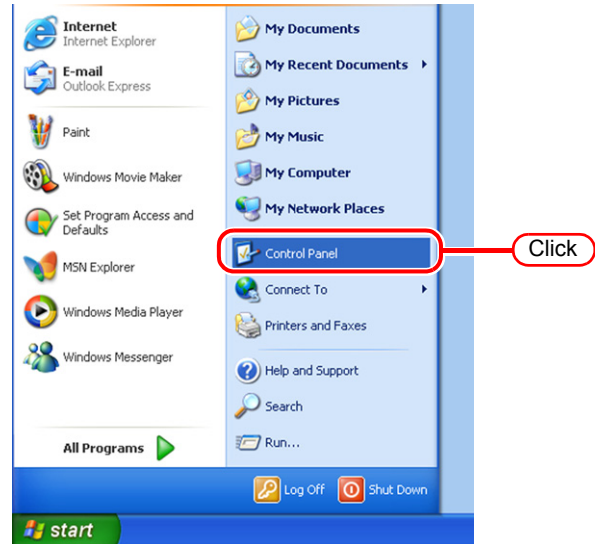
# Set the Control Panel

Open the Control Panel window as follows.

## Windows XP Control Panel

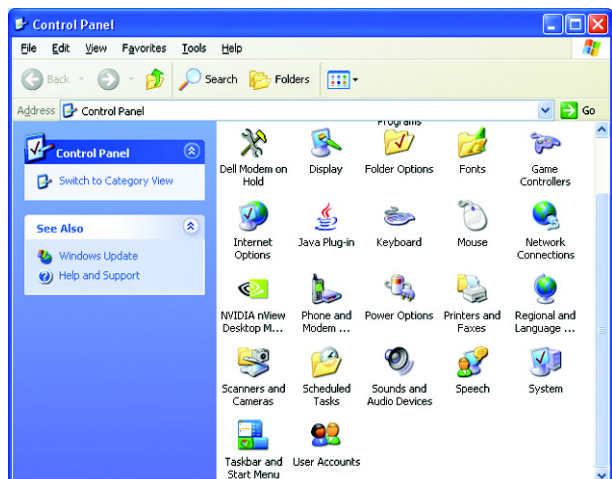
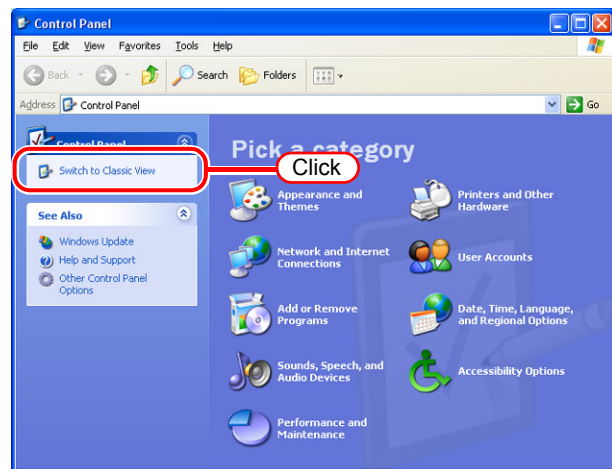
- 1 Select “Control Panel” in the Start menu.

The “Control Panel” window opens.



- 2 If the Control Panel is in the Category View, click “Switch to Classic View”.

All the Control Panel icons are displayed.

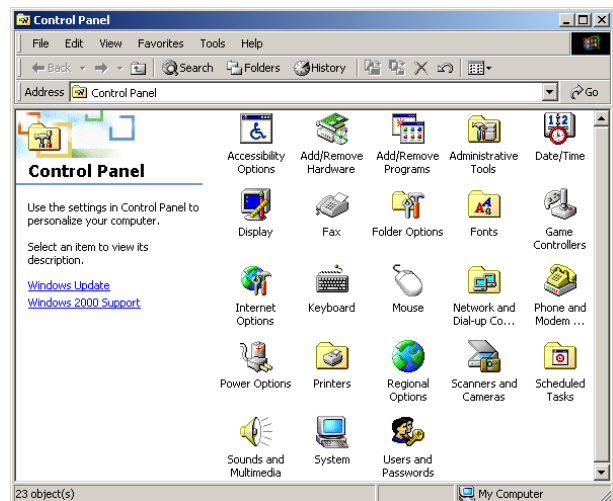
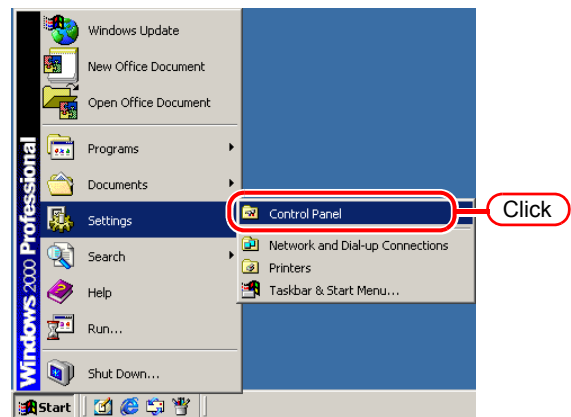




## Windows 2000 Control Panel

Select “Control Panel” in the “Settings” of Start menu.

The “Control Panel” window opens.



---

---

## Change the Host Name

Set the host name (computer name) so that the Raster Link Pro II PC can be identified on the network.

When there are several Raster Link Pro II PCs on the same network, it is necessary to change the host names to unique names so that they do not conflict.

In particular, if PC MACLAN is installed on the Raster Link Pro II PC, it is necessary to change the host name before installing Raster Link Pro II in order to perform the various PC MACLAN settings automatically.

It is not necessary to change the host name if only one Raster Link Pro II PC is present on the network.

Raster Link Pro II makes the PC MACLAN settings automatically according to the following rules.

### Set the PC MACLAN File Server

File server name	:	Raster Link Pro II PC host name
Shared folder name created as default	:	Printer Name (for full color) Printer Name \$A (for JV4 application separation) Printer Name \$R (for JV4 RIP separation)

### Set the PC MACLAN Print Server

Spooler name created as default	:	Printer Name_Raster Link Pro II PC host name (for full color) Printer Name\$A_Raster Link Pro II PC host name (for JV4 application separation) Printer Name\$R_Raster Link Pro II PC host name (for JV4 RIP separation)
---------------------------------	---	---

For example, if the host name is “RasterLink”, and the Printer Name is “JV3-SP”, the settings are as follows.

### PC MACLAN file server settings

File server name	:	RasterLink
Shared folder name created as default	:	JV3-SP

### PC MACLAN print server settings

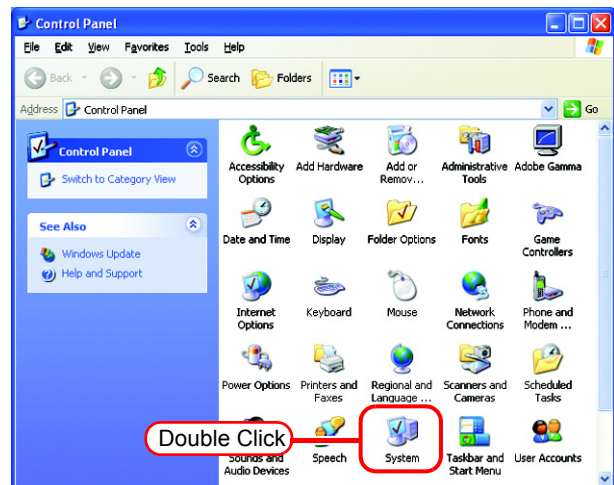
Spooler name created as default	:	JV3-SP_RasterLink
---------------------------------	---	-------------------

**NOTE!**

The maximum length of the PC MACLAN print server spooler name allowed in the specification is 27 bytes. If the host name is long, spooler names longer than the limit may be cut. The same applies to the spooler name created automatically by the condition management function. Therefore, we recommend setting a short host name.

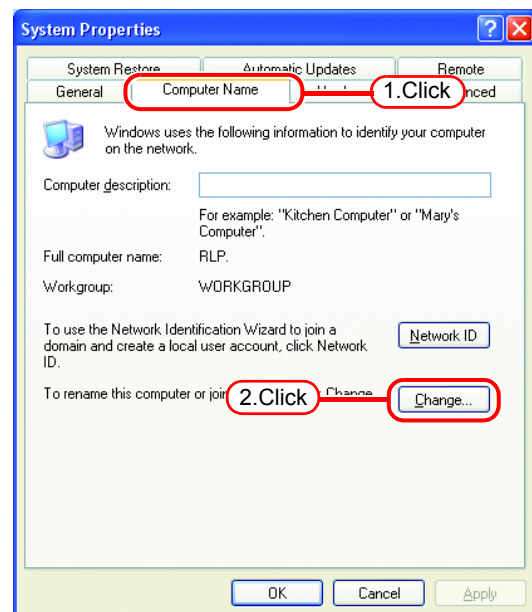
Here, the host name before being changed is “RLP”, and in the following example it is changed to “RasterLink”.

- 1 Double click [System] in [Control Panel].

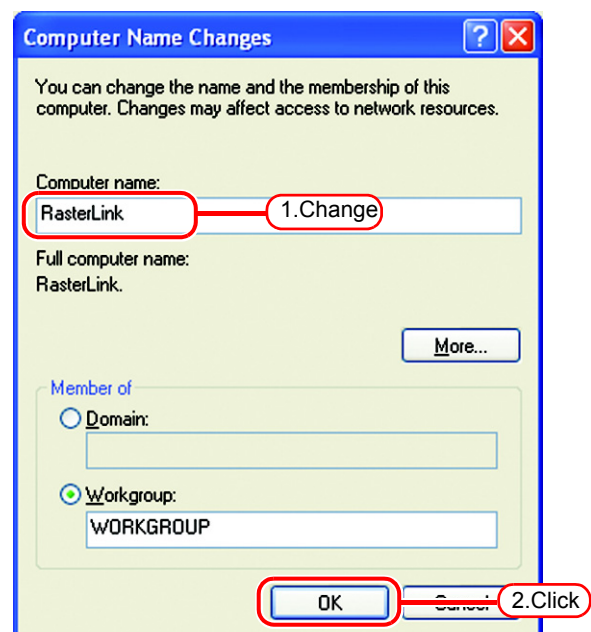


- 2 Click the [Computer Name] tab.

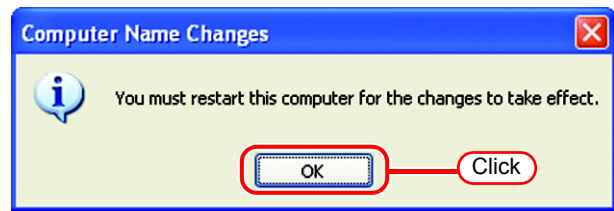
Click  .



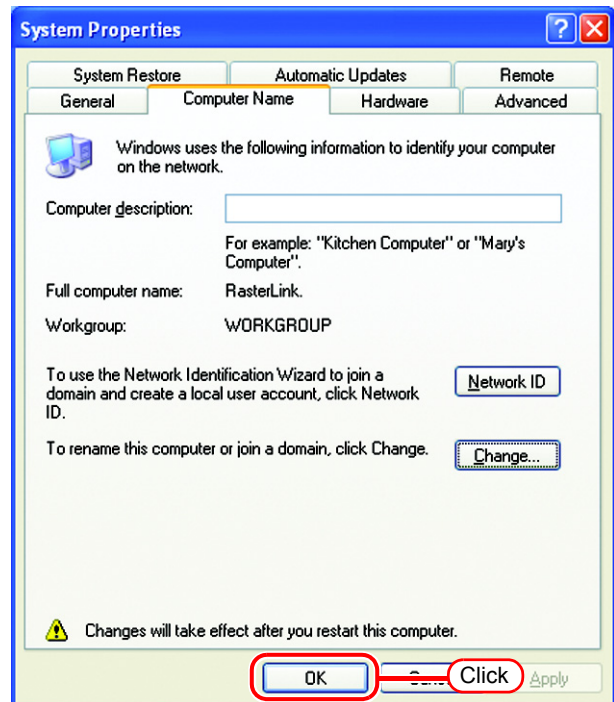
- 3 Change the [Computer name], and click  .



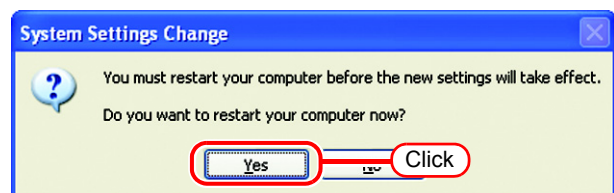
- 4 The confirmation screen appears. Click . The PC is not restarted.



- 5 On the system property screen click .



- 6 The restart confirmation screen appears. Click  to restart the PC.

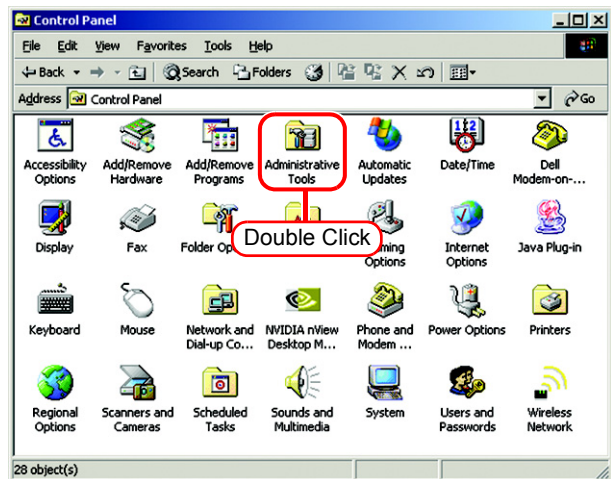


# Set the Local Security Policy (with Windows 2000)

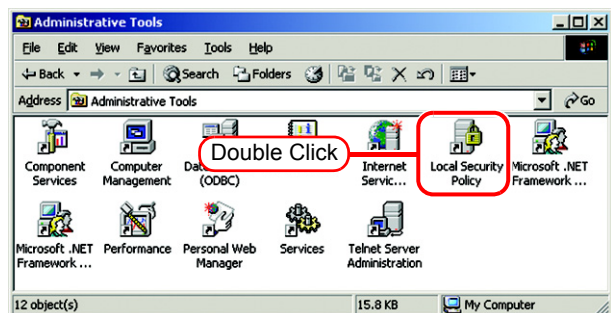
When Raster Link Pro II is installed in Windows 2000 and Raster Link Pro II is intended for use by users without Administrator authority, change the local security policy before installing Raster Link Pro II.

When users will login with Administrator authority, or when Raster Link Pro II is used with Windows XP, it is not necessary to change it

- 1 Double click “Administrative Tools” on [Control Panel].  
[Administrative Tools] window opens.



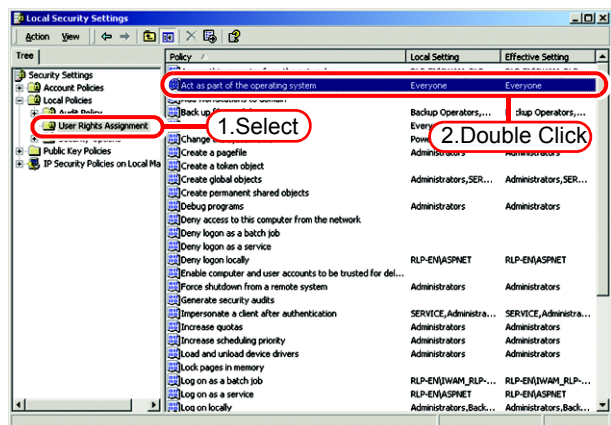
- 2 Double click “Local Security Policy” on [Administrative Tools] window.  
[Local Security Settings] window opens.



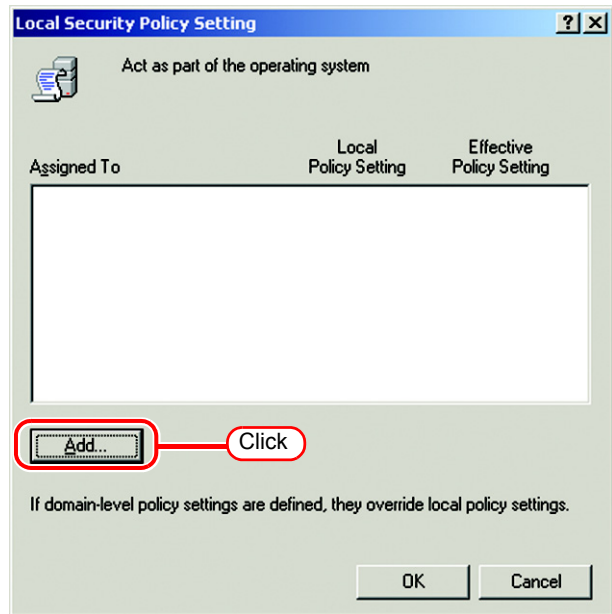
- 3 Select [User Rights Assignment] from [Local Policy].

Double click [Act as part of the operating system].

[Local Security Policy Setting] dialog is displayed.



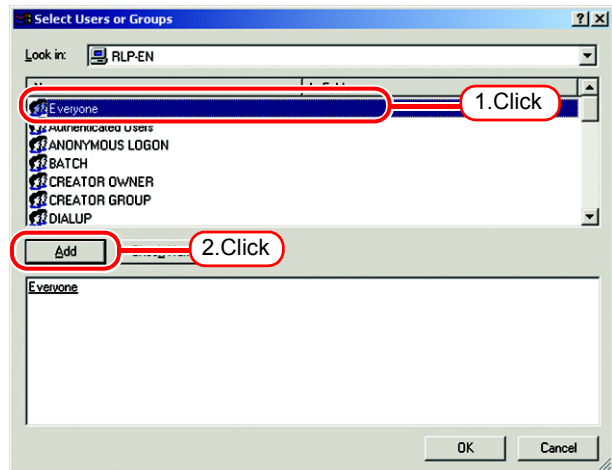
- 4 Click  .  
 [Select Users or Groups] window opens.



- 5 Click “Everyone” in the list shown in the upper area.

Click  .

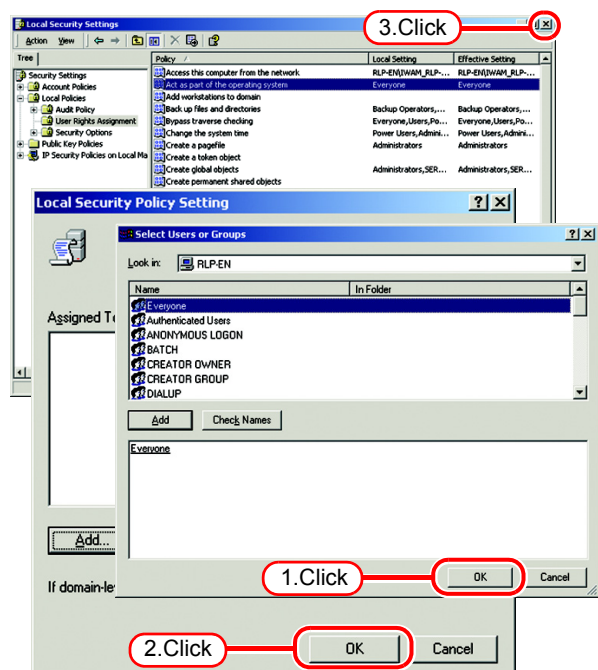
“Everyone” has been added to the lower area.



- 6 Click  , and close [Local Security Settings] window.

**NOTE!**

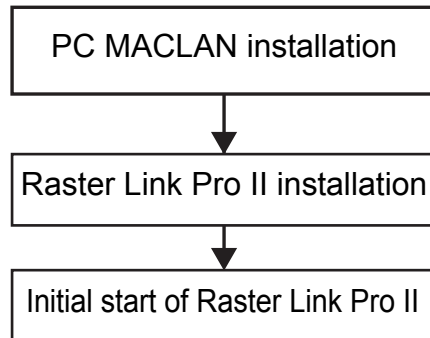
This setting is effective when the next time a user logs on or restarts the computer.



# PC MACLAN installation

When connecting a Macintosh as a client PC, installing PC MACLAN is required. Execute PC MACLAN installation usually before Raster Link Pro II installation.

Refer to “Installing PC MACLAN” in the PC MACLAN User's Guide for details of installation.



Installation procedure

## 1 Log on as an Administrator or a member of the Administrators group.

The group can be checked by “User Accounts” on the “Control Panel”.

## 2 Mount the PC MACLAN installation CD on the CD drive.

The installer automatically starts.

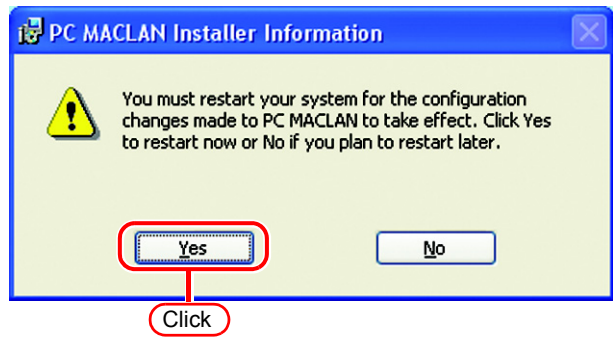
If the installer does not start automatically, execute “setup.exe” in the CD-ROM.

Click “Install PC MACLAN,” and then proceed the installation by following the indications by the installer.



**3** When installation has been completed, the Windows restart message is displayed.

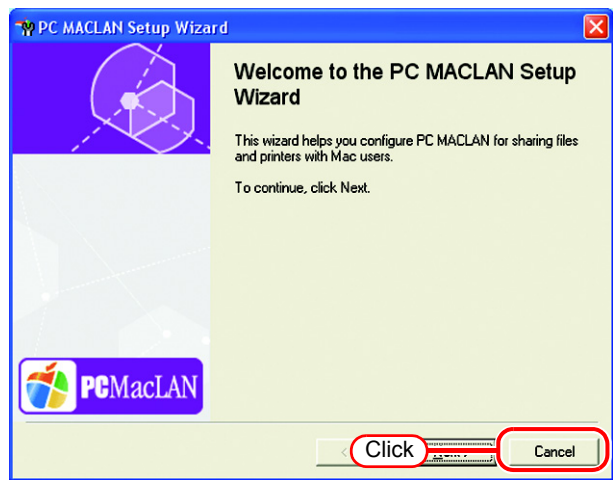
Click  to restart the PC.



**4** When restarting the PC after PC MACLAN installation, "PC MACLAN Setup Wizard" may sometimes start.

If the wizard has started, click

.





---

# Raster Link Pro II Installation

This document explains the installation procedure using Windows XP as an example. Unless otherwise specified, use the same procedure as Windows XP for Windows 2000.

**NOTE!**

- Using Mimaki's other software RIP  
If Raster Link UJ or Raster Link GP is installed, be sure to uninstall it before installing Raster Link Pro II.  
If Raster Link Pro is installed, you can install Raster Link Pro II without changes. However, Raster Link Pro cannot be used when Raster Link Pro II is running.
- Do not connect the dongle to a PC before installing the Raster Link Pro II. In that case, "Found New Hardware Wizard" is displayed. Remove the dongle and click on the  button.
- Windows Automatic Updates settings  
When Windows [Automatic Update] is set to "Automatic", the update program is installed at the set times, and it may be necessary to restart your PC. If the PC is restarted when Raster Link Pro II is running, Raster Link Pro II may not start up again properly. To prevent the PC restarting automatically, in the [Automatic Updates] control panel, select "Download updates for me, but let me choose when to install them".

## Install the IEEE1394 Driver

Install the IEEE1394 driver from the device driver CD provided with the printer. For the installation method, refer to "InstallGuide(en).pdf" on the device driver CD.

## Install the USB 2.0 Driver

When connecting the printer and PC with USB 2.0, install the USB 2.0 driver from the device driver CD provided with the printer. For the installation method, refer to "InstallGuide(en).pdf" on the device driver CD.

---

## Set the Raster Link Pro II CD

**NOTE!**

- Installing Raster Link Pro II requires Administrator authority.
- Use the IEEE1394 driver Ver.2.00 or later.

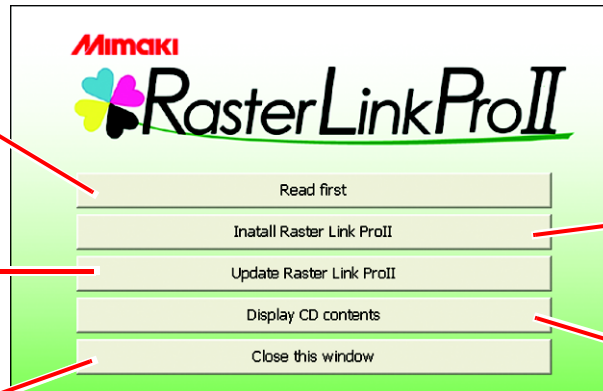
Insert the installation CD-ROM of Raster Link Pro II into the CD drive, and the Raster Link Pro II installation menu starts automatically.

In case the Raster Link Pro II installation menu does not start automatically, double-click “CDMenu.exe” in the CD-ROM.

ReadMe file is displayed. Please read it before installation.

Start updating version of Raster Link Pro II. ( P.72)

Close this window.



Start installing for Raster Link Pro II. ( P.19)

Display the contents of this CD.

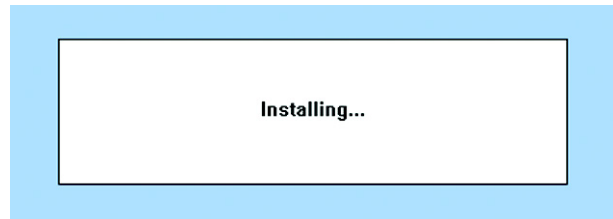
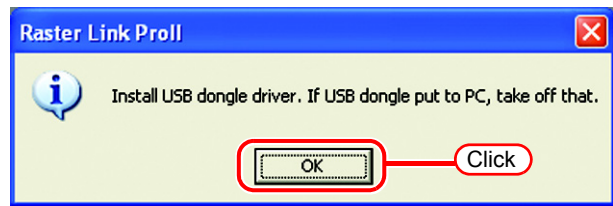
## Install the Raster Link Pro II

- 1 Click “Install Raster Link Pro II” in the Raster Link Pro II installation menu.

The confirmation screen for installing the USB dongle driver appears.

Click .

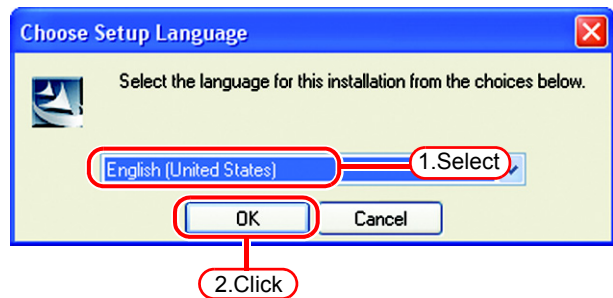
Installation of the USB dongle driver starts.



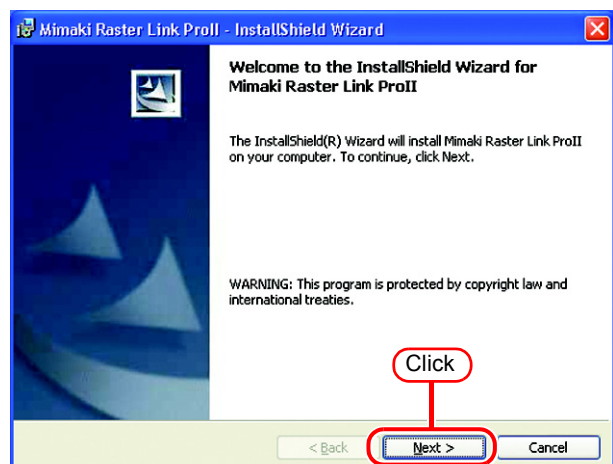
- 2 The “Choose Setup Language” dialog box appears.

Select a setup language, and click

.

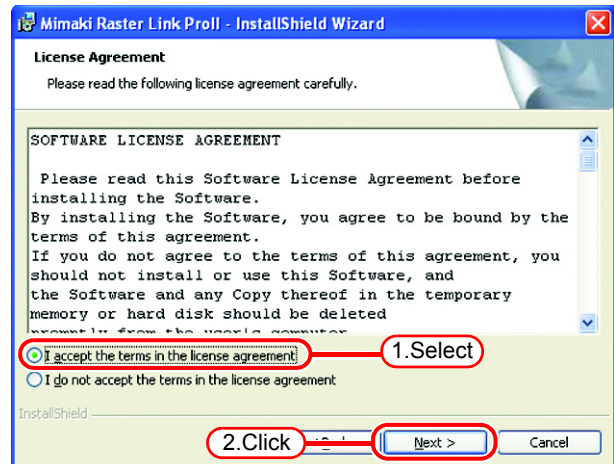


- 3 Click .



**4** Select “I accept the terms in the license agreement.”

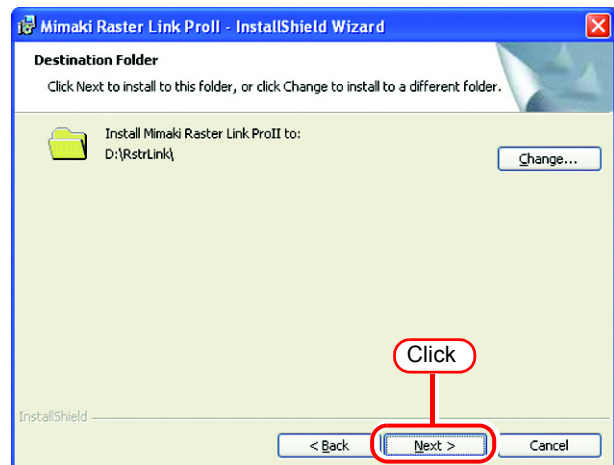
Click  .



**5** Specify a destination for the installation.

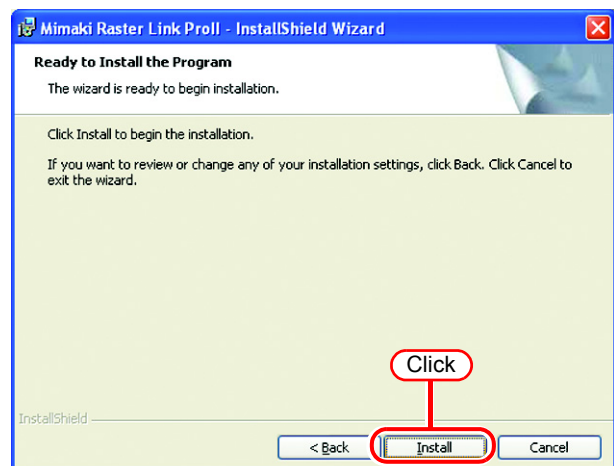
Specify a drive with sufficient spare capacity.

Click  .

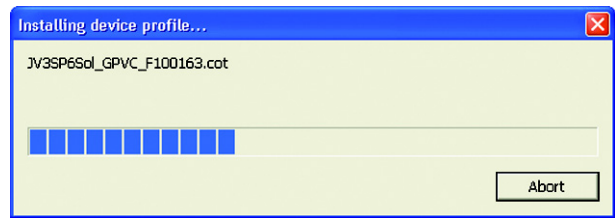


**6** Click  .

The Raster Link Pro II files are copied to the installation destination.

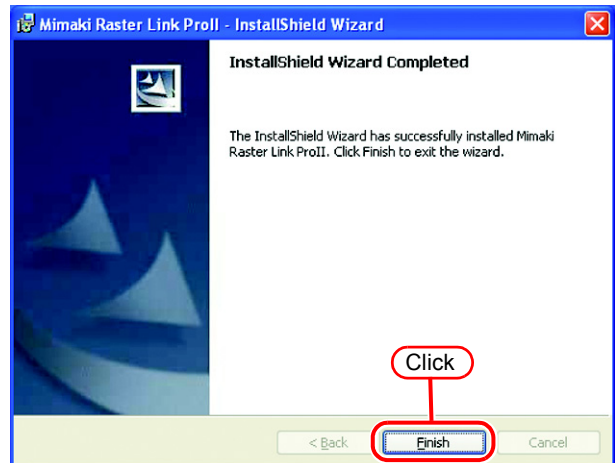


- 7 Some profiles are installed automatically.



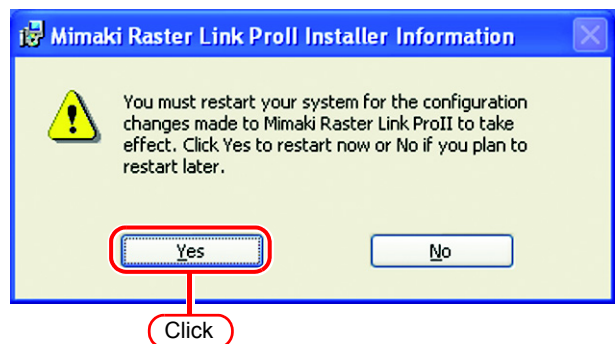
- 8 Raster Link Pro II installation finishes.

Click .



- 9 Restart the PC.

Click  to restart.



# Starting Raster Link Pro II

Start the Raster Link Pro II as follows.

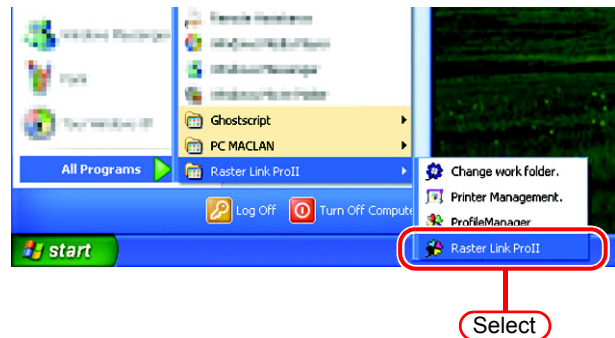


No printers are registered immediately after Raster Link Pro II is installed. Add printers by “Printer Management” function, before starting Raster Link Pro II. (Reference Guide, Common features for every printer “Printer Management Function”.)

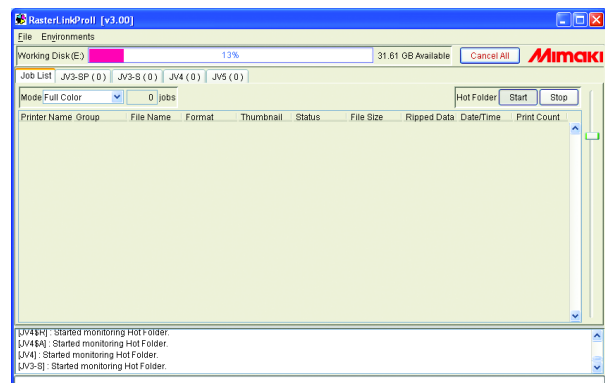
- 1 Select [Raster Link Pro II];  
[Start] - [All Programs] - [Raster Link Pro II] - [Raster Link Pro II] menu

Or double-click the “Raster Link Pro II” icon on the desktop.

The Raster Link Pro II start screen is displayed.



- 2 The main window of Raster Link Pro II are displayed.



# Print from Client PCs

The following explains the settings for the client PC that accesses Raster Link Pro II connected to the network. As the client PC, Windows 98SE/Me/2000/XP and Macintosh can be used.



This chapter assumes that JV3-SP was registered in the “Printer Management”. When another printer is registered, make the settings with the different model name.

Windows 98SE/Me  
Client PC( P.31)



Windows 2000/XP  
Client PC( P.39)



Mac OS8.6~9.2.2  
Client PC( P.44)



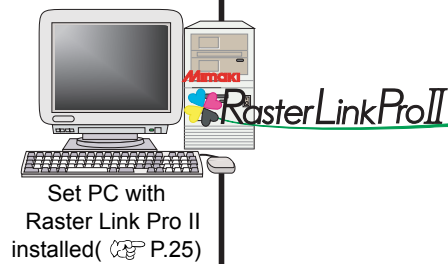
Mac OSX(10.3)  
Client PC( P.54)



Mac OSX(10.4)  
Client PC( P.59)



Ethernet



---

---

# Method for printing from client PC

## Printing by using hot folder

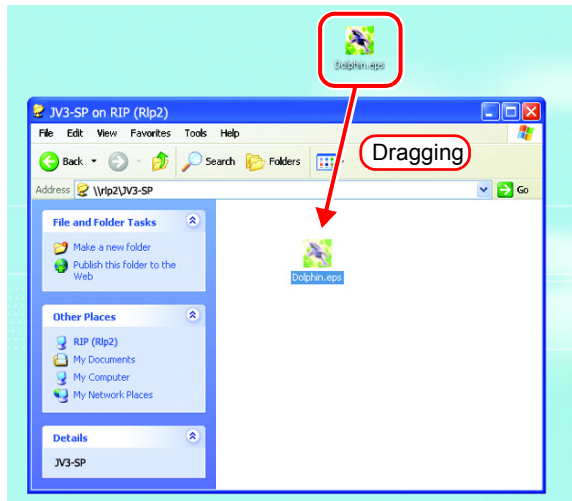
Raster Link ProII creates a “hot folder” for receiving image data on its installed PC. Dragging and dropping the image data onto this hot folder from a client PC enables data transfer to Raster Link Pro II. Two hot folders (four folders for JV4 series) are created when adding a printer at the “Printer Management” function, and they have respective objectives.

Folder name: “Printer Name specified at Printer Management” ..... Hot folder for fullcolor images

Folder name: “Printer Name specified at Printer Management \$m” ..... Hot folder for MRL  
(Mimaki command file)

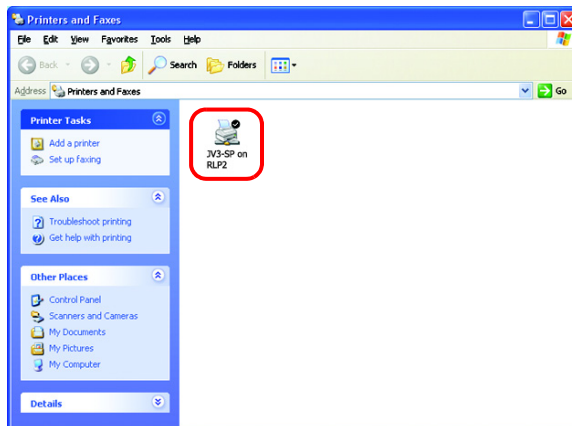
Folder name: “Printer Name specified Printer Management \$A” ..... Hot folder for application separation (JV4 only)

Folder name: “Printer Name specified Printer Management \$R” ..... Hot folder for RIP separation (JV4 only)



## Printing by using printer driver

When printing directly from applications such as Adobe Illustrator and Photoshop, use the printer driver created by Raster Link Pro II. As with typical printer drivers, the printer driver created by Raster Link Pro II is specified.





# Set PC with Raster Link Pro II installed

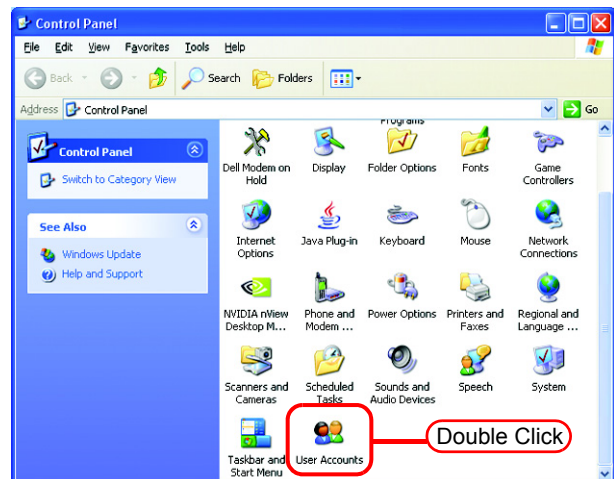
Set PC with Raster Link Pro II installed so that the networked client PC can access it.

## Guest account settings

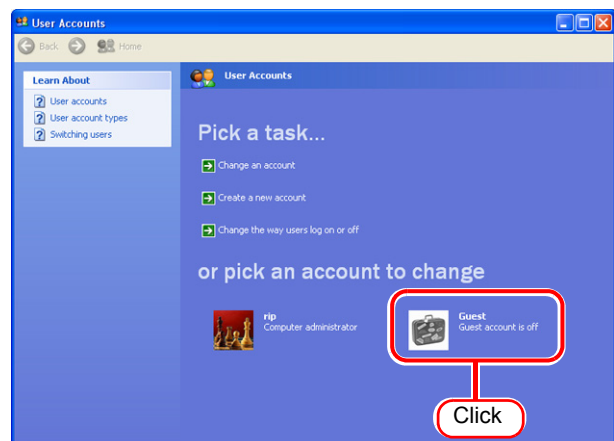
Set the guest account to allow the accesses to Raster Link Pro II PC.

### For Windows XP

- 1 Double click [User Accounts] on [Control Panel].



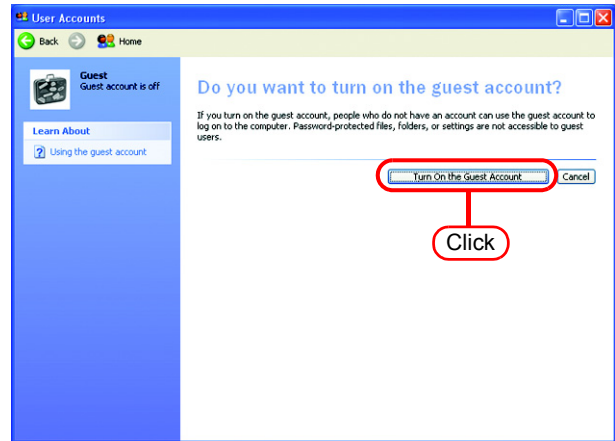
- 2 Click "Guest".



### 3 Click

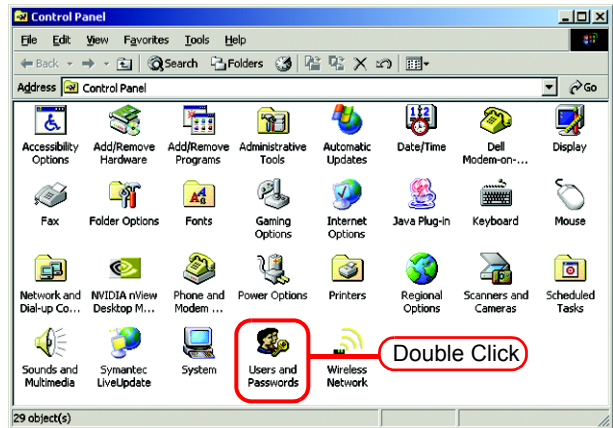
**NOTE!**

- Make sure that “Use simple file sharing (Recommended)” is checked in [Tools] - [Folder Options] - [View] - [Advanced settings:] of Explorer.
- When the PC has joined a domain network, consult the network administrator for the guest account handling. When the guest account has been turned off, changing user settings of PC MACLAN is required for accessing the Raster Link Pro II PC from a Macintosh client.  
For details, see the description of “Changing a user’s password” in “Setting up the File Server” of the PC MACLAN User’s Guide.

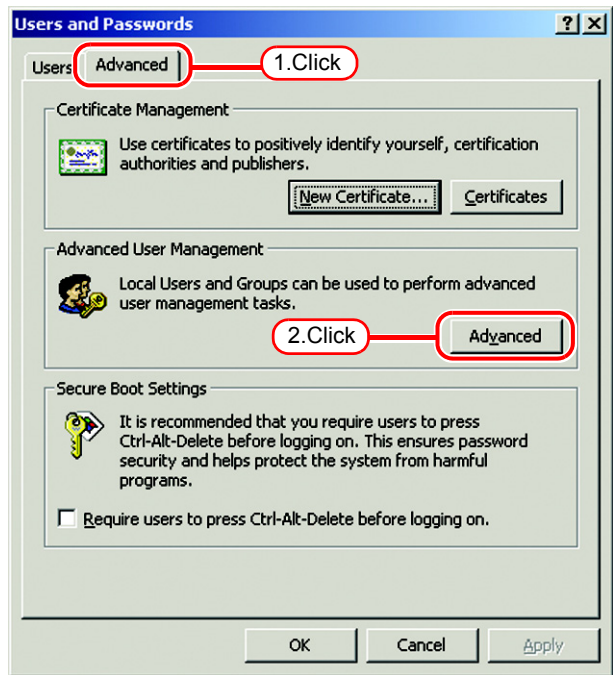


## For Windows 2000

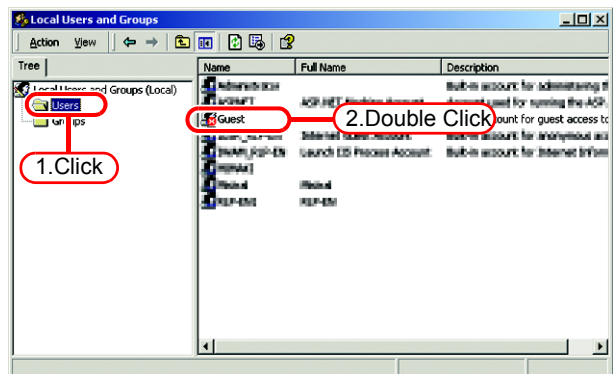
- 1 Double-click [Users and passwords] on the [Control Panel].  
The “Users and Passwords” dialog box is displayed.



- 2 Click the [Advanced] tab.  
Click the [Advanced] on the “Advanced User Management”.  
The “Local Users and Groups” window is displayed.



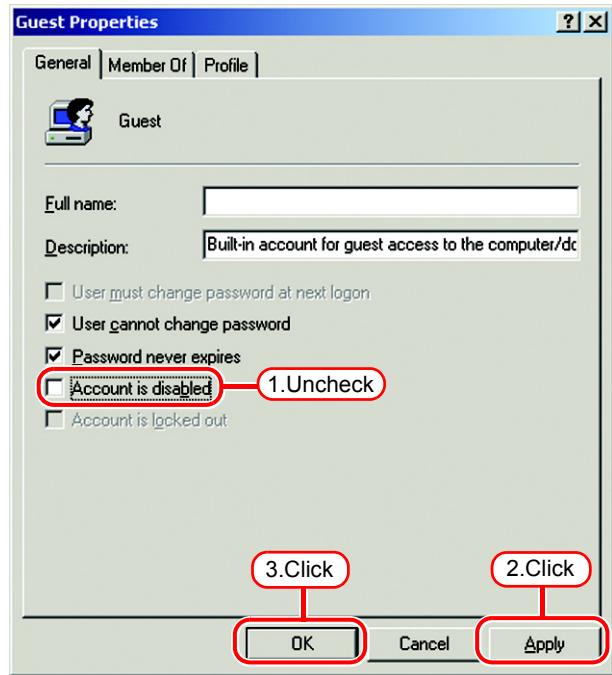
- 3 Select “Users” from [Tree].  
A list of users is displayed on the right.  
Double-click “Guest” in the list.



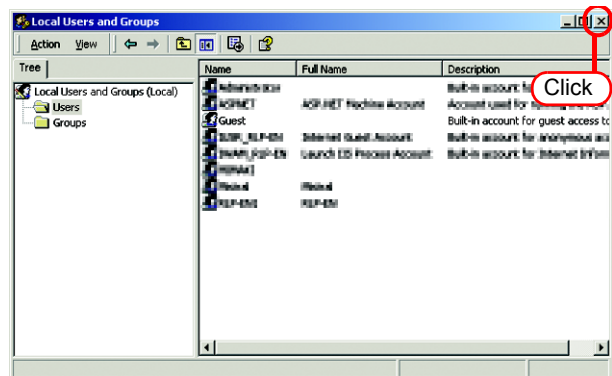
- 4 If “Account is disabled” has a check mark, turn off the check mark.

Click  .

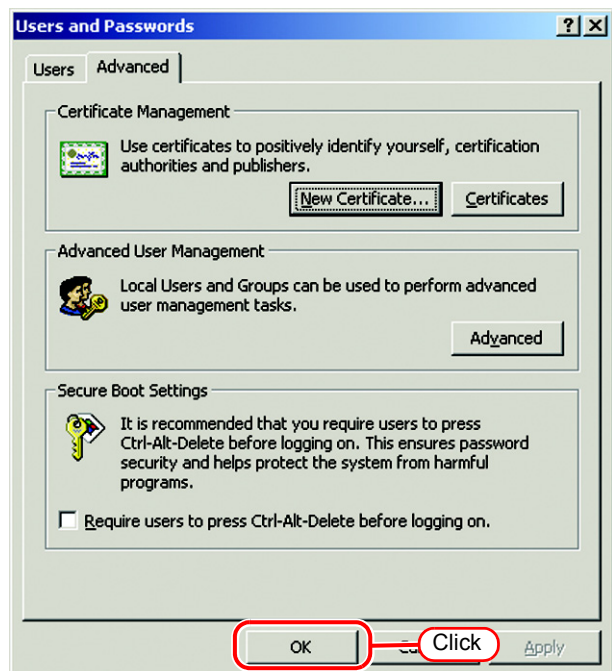
Click  .



- 5 Close the “Local Users and Groups” window.



- 6 Click  of the “Users and passwords” dialog box to close the dialog box.

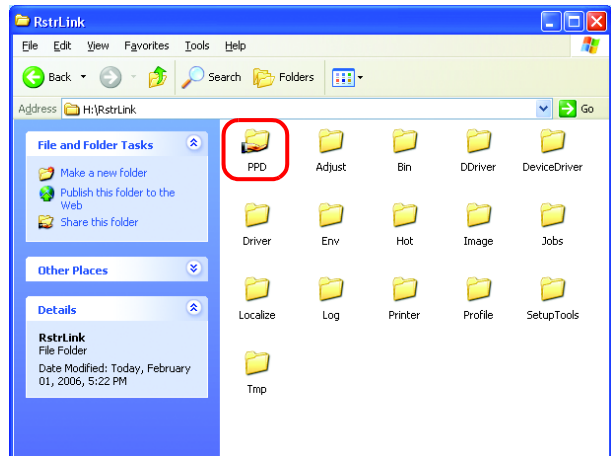


## Enable file sharing (with Windows XP)

When Raster Link Pro II starts up for the first time, the hot folder and PPD folder are automatically set for file sharing. However, with Windows XP, if file sharing is not enabled, access from the client PC is not possible. The following is an example of enabling Windows XP file sharing using the PPD folder automatically set for file sharing when Raster Link Pro II starts up for the first time.

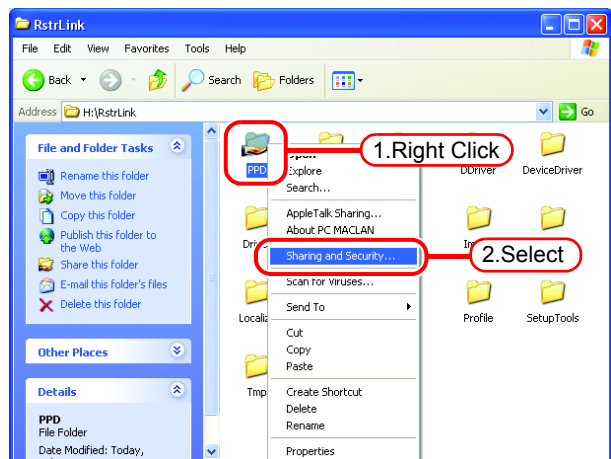
### 1 Display the PPD folder on the Raster Link Pro II PC.

The hand icon under the folder shows that it is set for file sharing.



### 2 Select the PPD folder and right click it.

Select "Sharing and Security" from the pop-up menu.

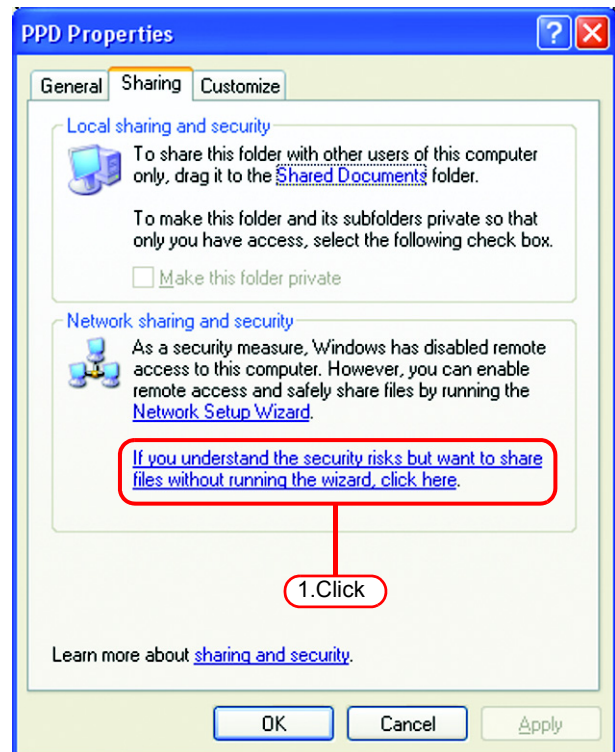


- 3 If the screen at right appears, file sharing is not enabled. Click “If you understand the security risks but want to share files without running the wizard, click here”.

If the screen in 4 appears, file sharing is already enabled so it is not necessary to change the setting.

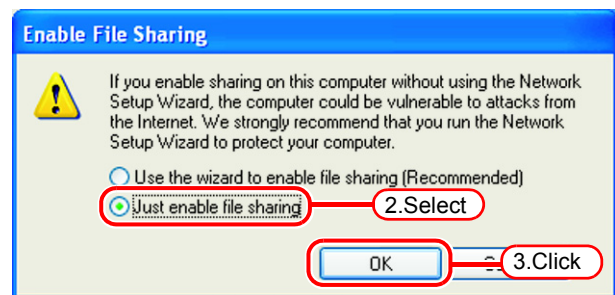
**NOTE!**

To run the Network Setup Wizard, specialist knowledge of networks is required. If you are not confident about making network settings, do not run the Network Setup Wizard.

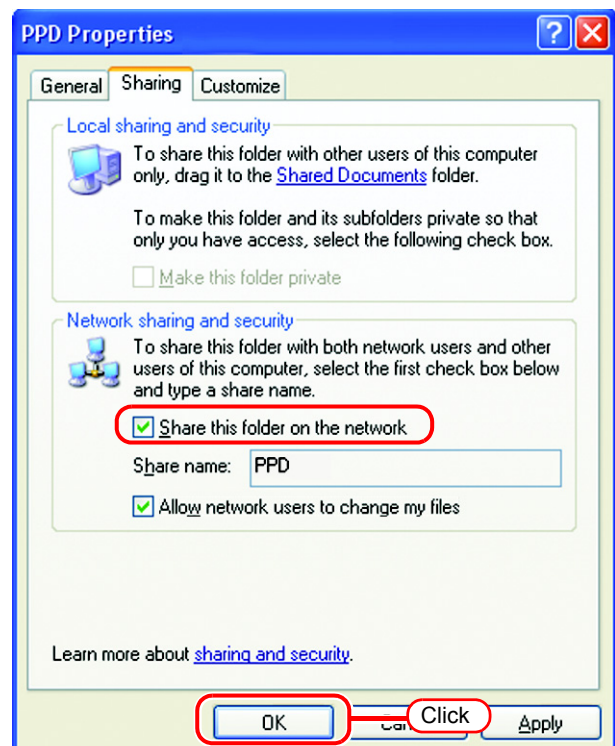


Select “Just enable file sharing”.

Click .



- 4 When Raster Link Pro II starts up for the first time, the PPD folder is set for file sharing, so “Share this folder on the network” is checked. Without making any changes, click  to close the screen.



# Set Windows 98SE/Me Client PC

## Install the Printer Driver

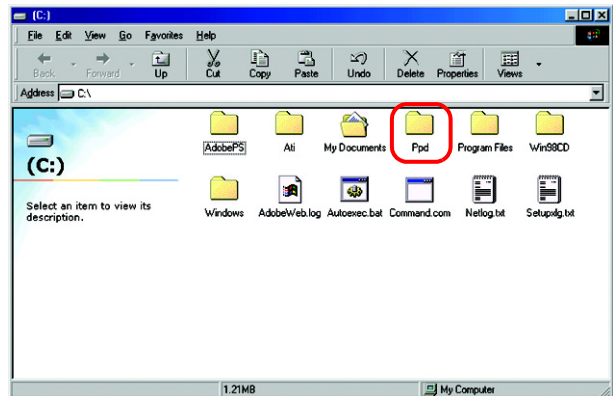
### Copy the PPD File

Copy the PostScript Printer Description (PPD) file “Mkrlp2en.ppd” for Mimaki’s printer from the Raster Link Pro II PC.

Install the PPD file with the Adobe PS Printer Driver.

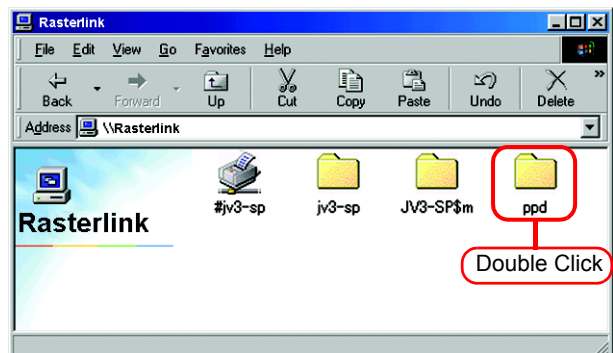
- 1 Create a folder for saving the PPD file on the client PC.

Here, the “PPD folder” is created on the C drive.



- 2 Connect from the client PC to the PC on which Raster Link Pro II is installed.

Open the “PPD” folder on the PC on which Raster Link Pro II is installed.

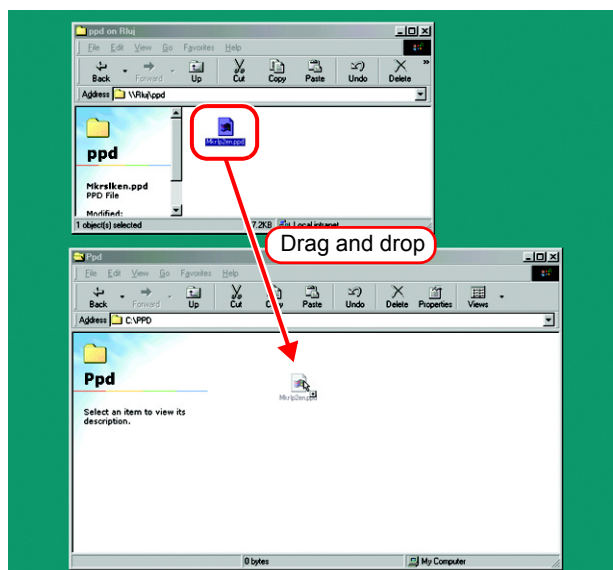


- 3 Drag and drop “Mkrlp2en.ppd” to the PPD file saving folder of the client PC.

Drag and drop it to the folder created in procedure 1.

#### NOTE!

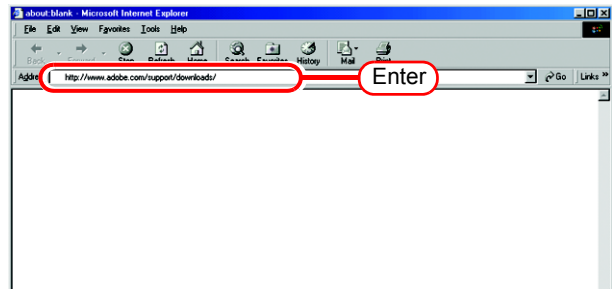
Do not save the PPD file in a folder having a path that contains space character such as “My Document”. Otherwise, the PPD file cannot be selected when installing the Adobe driver.



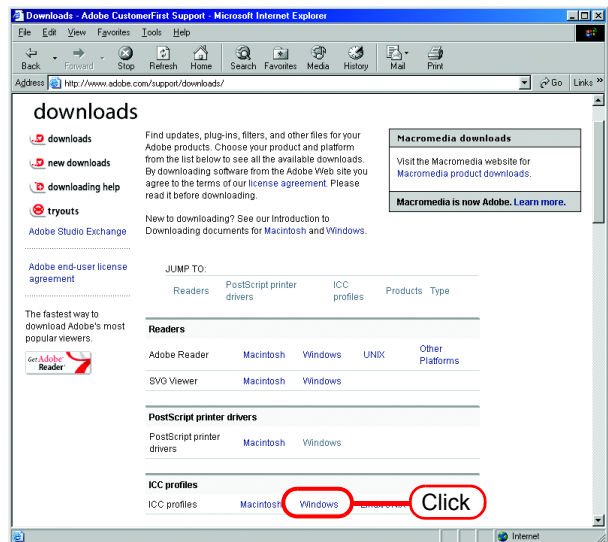
# Download the Adobe PS

If Adobe PS is not available, download it from the Adobe Web site.

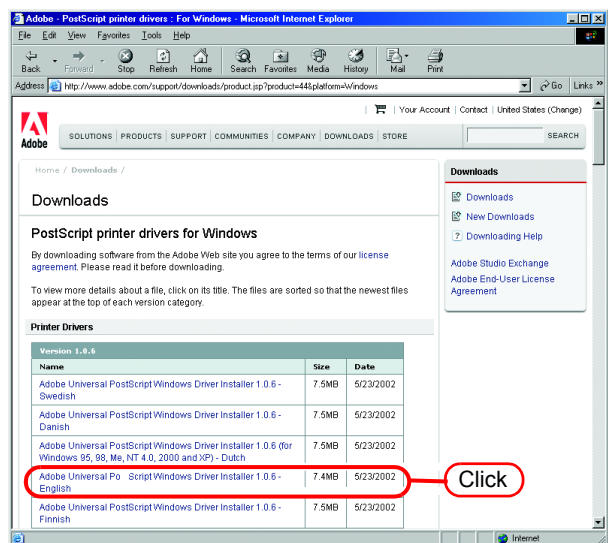
- 1 Start Internet Explorer, and then enter the following URL:  
“http://www.adobe.com/support/downloads/”



- 2 Select [Windows] from [PostScript printer drivers].  
A list of Adobe PS downloads is displayed on the screen.

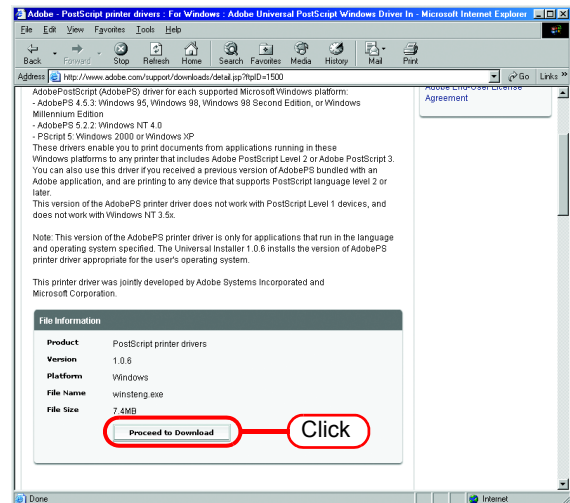


- 3 Click the driver for the language used from the [Printer Drivers]-[Version 1.0.6] column.  
The screen for explanation of the download is displayed.

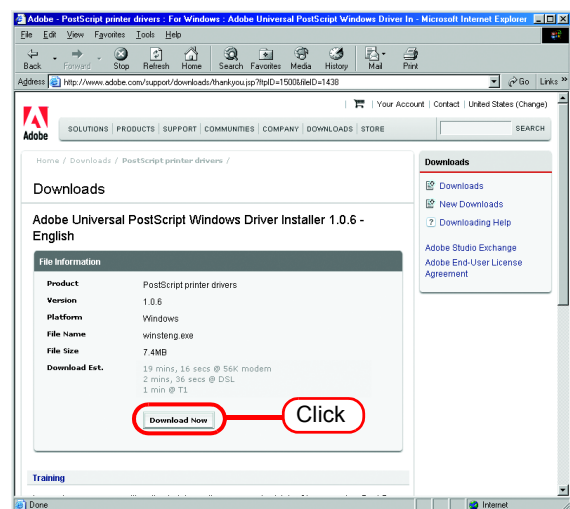




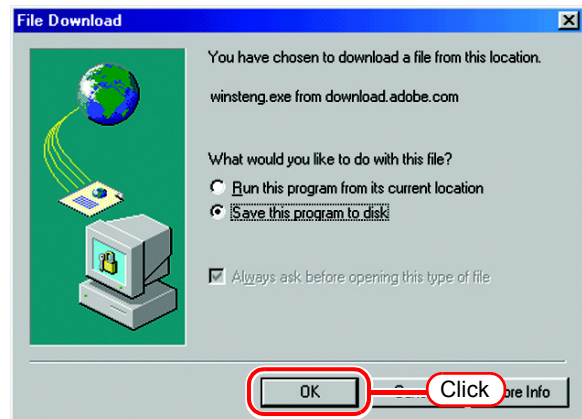
- 4 Click  .  
The download screen is displayed.



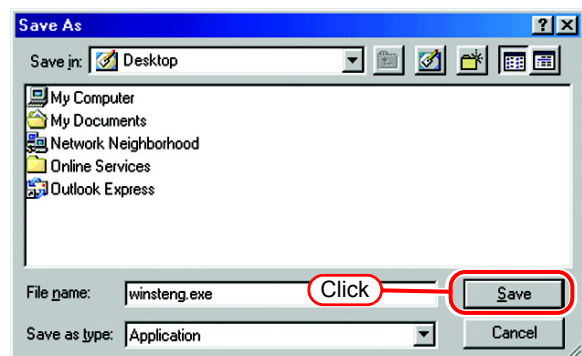
- 5 Click  .  
The "File Download" dialog box is displayed.



- 6 Click  .  
The "Save As" dialog box is displayed.

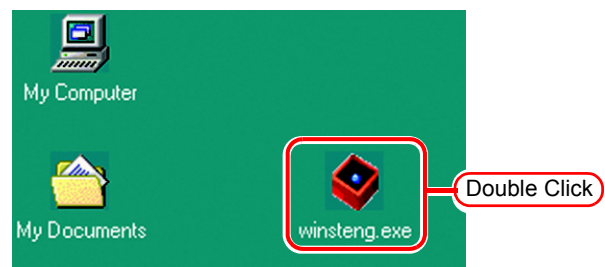


- 7 Specify the saving destination, and then click  .



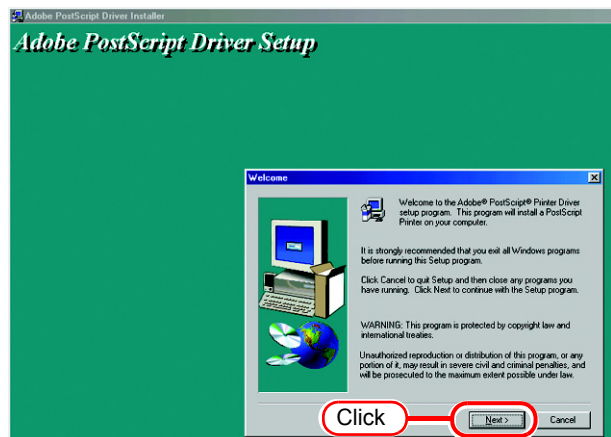
## Install the Adobe PS

- 1 Double-click the downloaded file [winsteng.exe], which has been downloaded by “Download the Adobe PS” ( P.32).

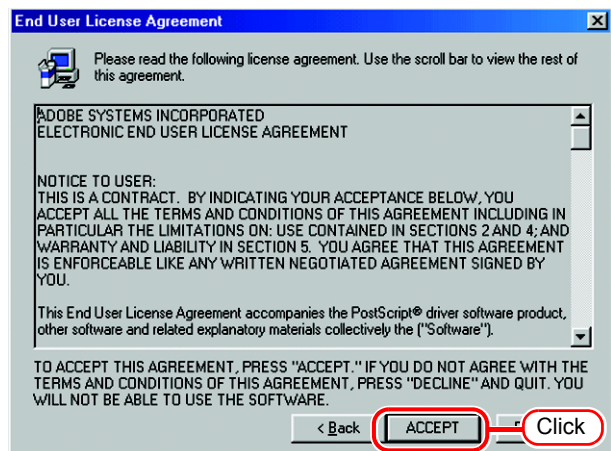


- 2 The installer for Adobe PostScript Driver starts up.

Click  .

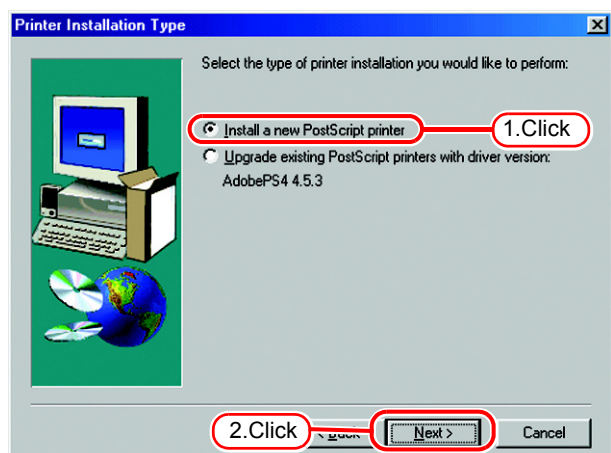


- 3 Click  .



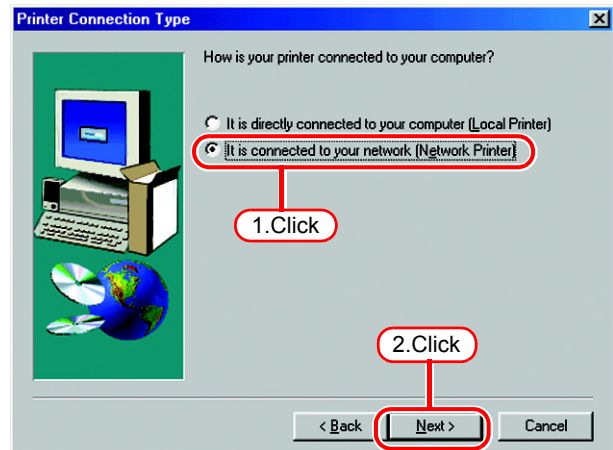
- 4 Click “Install a new PostScript printer”.

Click  .



- 5 Click “It is connected to your network (Network Printer)”.

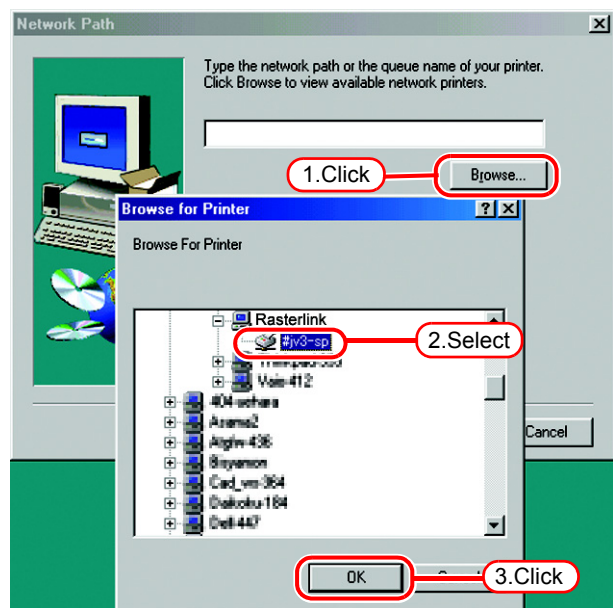
Click  .



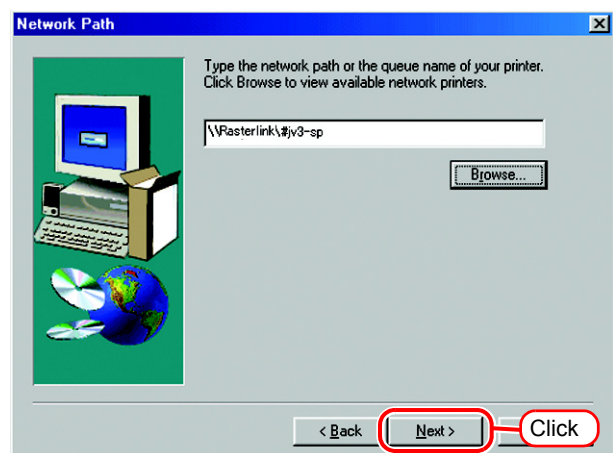
- 6 Click  .

Access the Raster Link Pro II and select a printer.  
Select “#jv3-sp” here.

Click  .

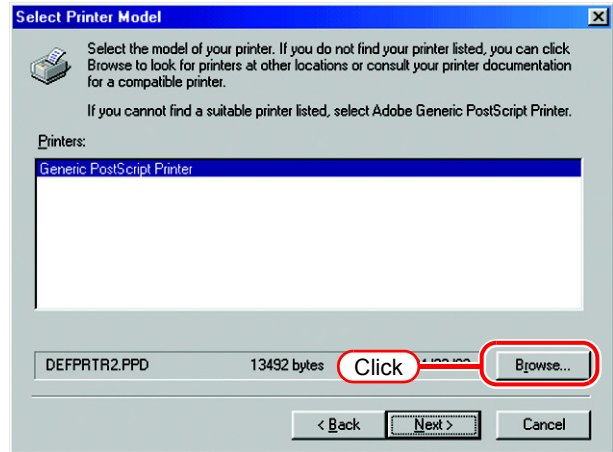


- 7 Click  .



8 Click  .

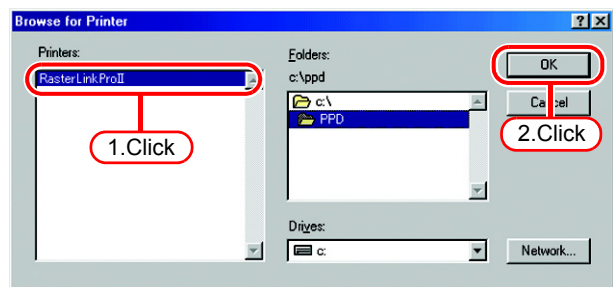
Select the PPD file copied from Raster Link Pro II PC.



9 Select the PPD file.

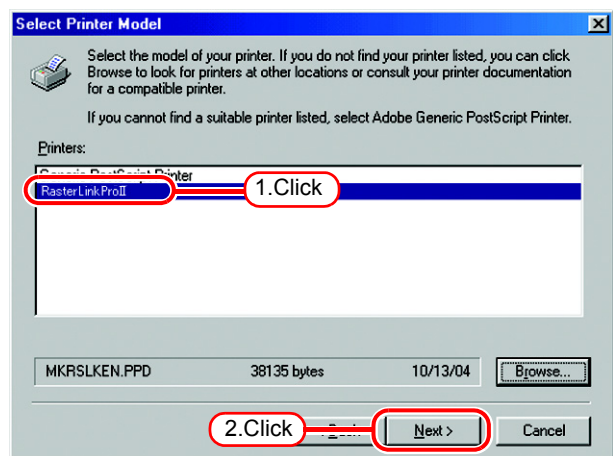
Here, the PPD file is in the PPD folder created in drive C.

Click  .



10 Select "Raster Link Pro II."

Click  .

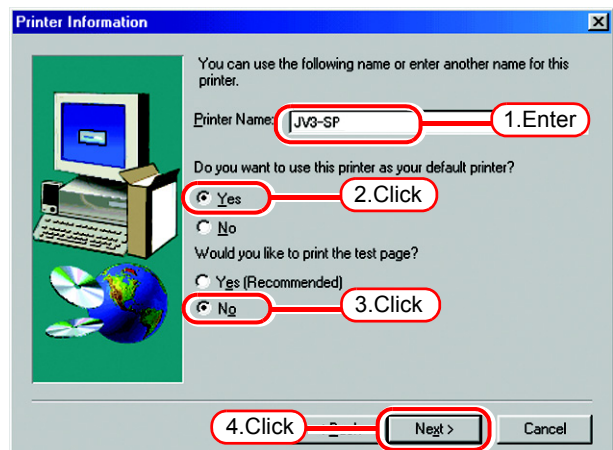


11 Enter the printer name.

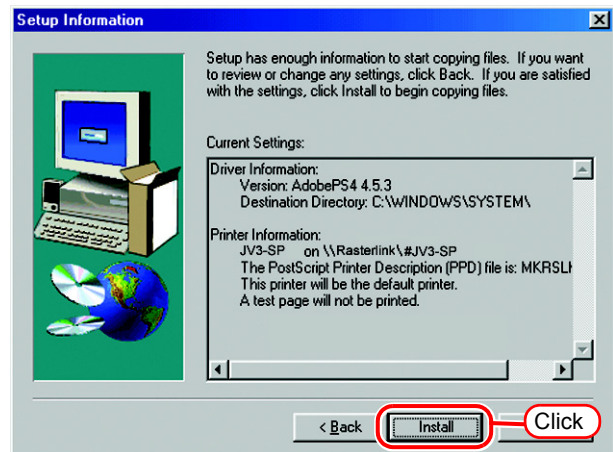
Select "Yes" for the default printer.

Select "No" for the test page.

Click  .

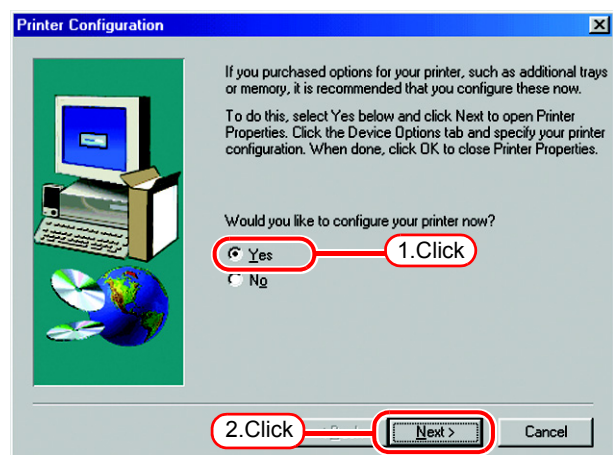


12 Click .



13 Click [Yes].

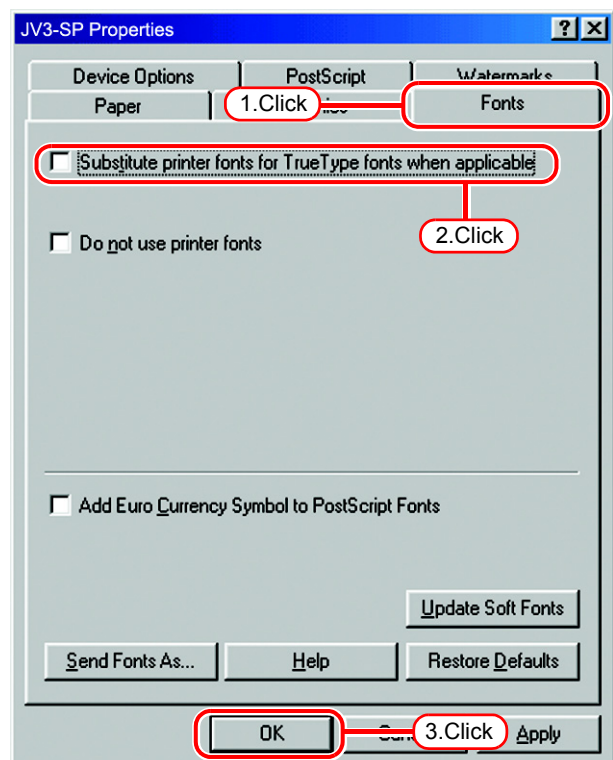
Click .



14 Click "Fonts" tab.

Click "Substitute printer fonts for True Type fonts when applicable" and uncheck the box.

Click .

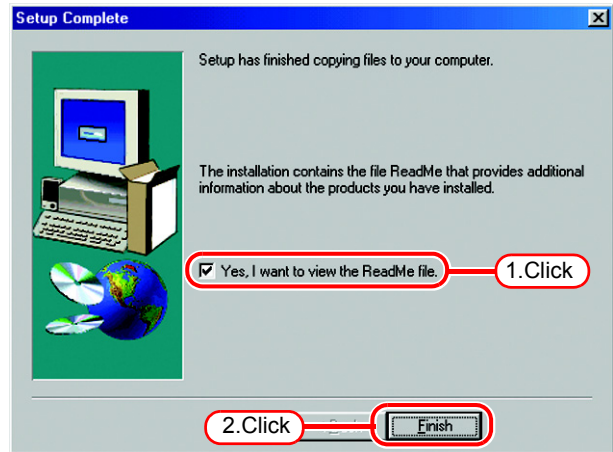


**15** Click “Yes, I want to view the ReadMe file” to enable.

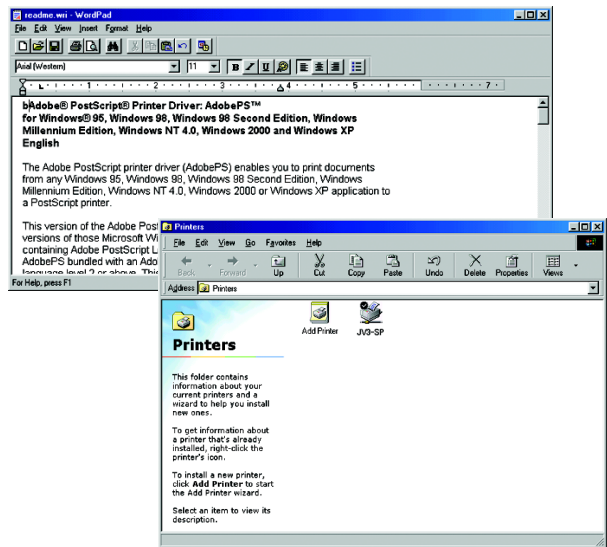
**NOTE!**

Important information is written on the “ReadMe”. Be sure to read the “ReadMe” file.

Click  .



**16** Read the “ReadMe” file.



# Set Windows 2000/XP Client PC

## Install the printer driver

Described below is the procedure for installing the printer driver on Windows XP. In case Windows 2000, same procedure can be used.

**NOTE!**

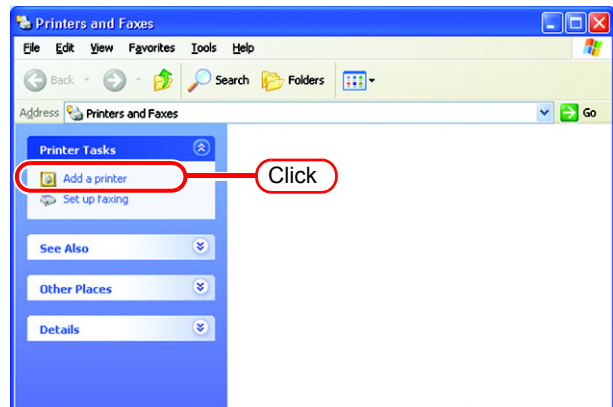
If the OS of the Raster Link Pro II PC is older than the OS of the client PC, it may not be possible to install the printer driver with subsequent printer driver installation procedures. In this case, install the AdobePS driver similarly to the "Windows 98SE/Me settings".

**1** Open the "Printers and Faxes" window.

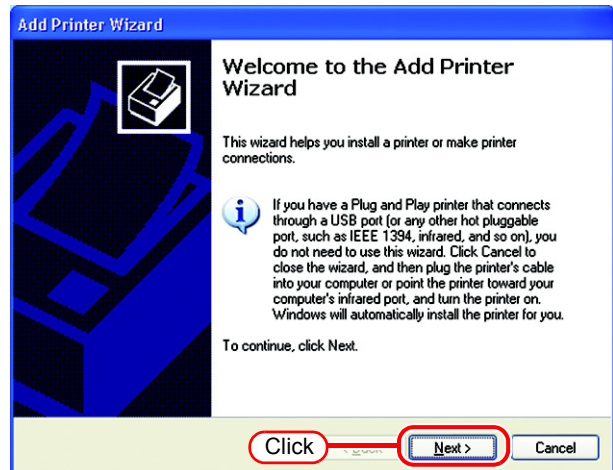
[Start] - [Printers and Faxes] menu.

Click "Add a printer".

The "Add Printer Wizard" window is displayed.

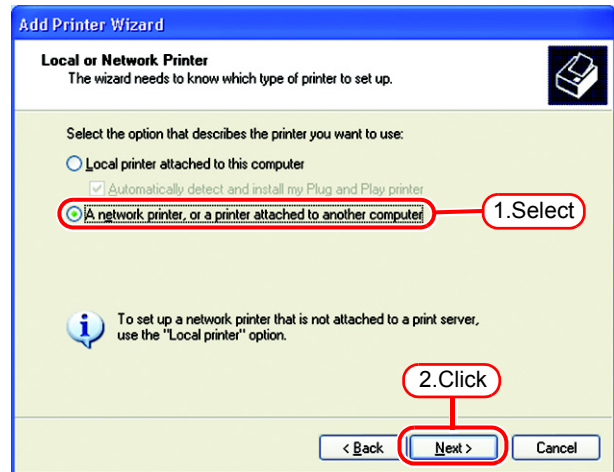


**2** Click  .



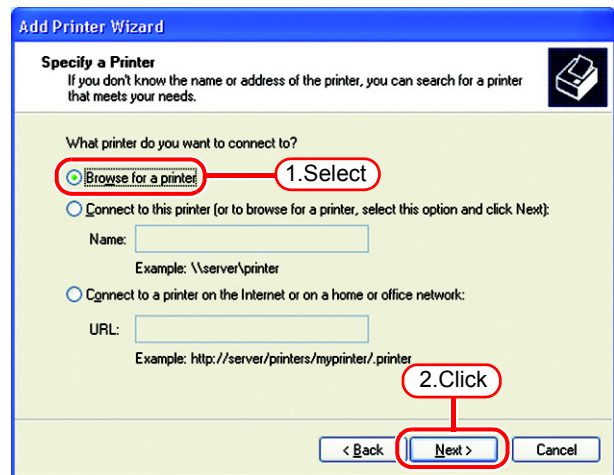
- 3** Select the “A network printer, or a printer attached to another computer”.

Click  .



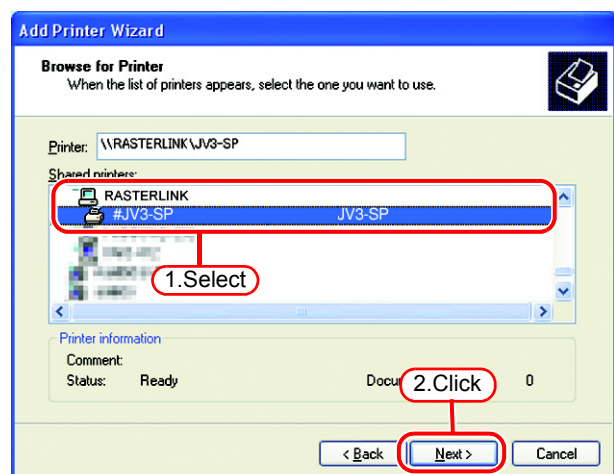
- 4** Select the “Browse for a printer”.

Click  .



- 5** From the list of Shared printers, select the PC on which Raster Link Pro II has been installed.

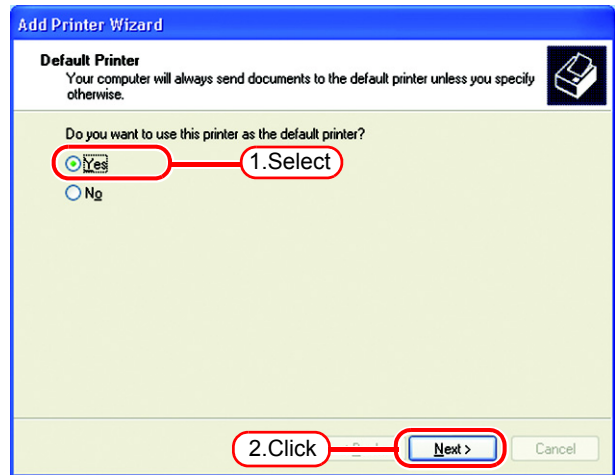
Select the printer driver “Printer Name” which you prepared on “Printer Management”.



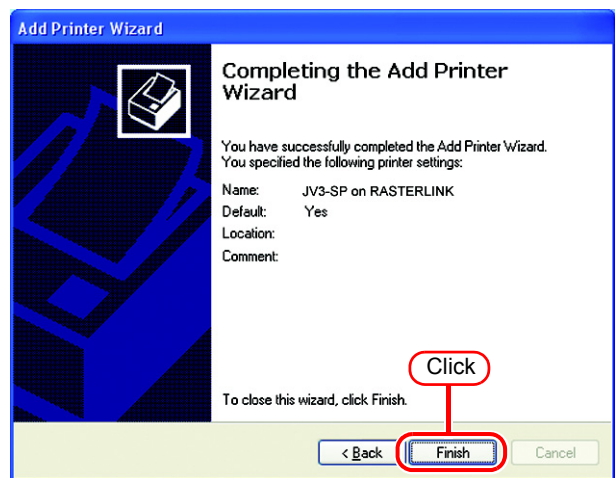


6 Select "Yes" .

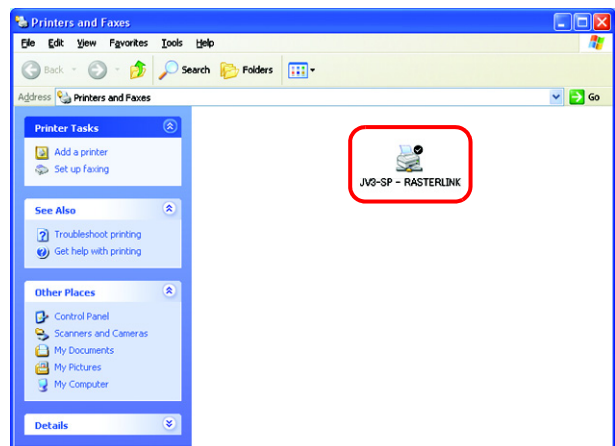
Click  .



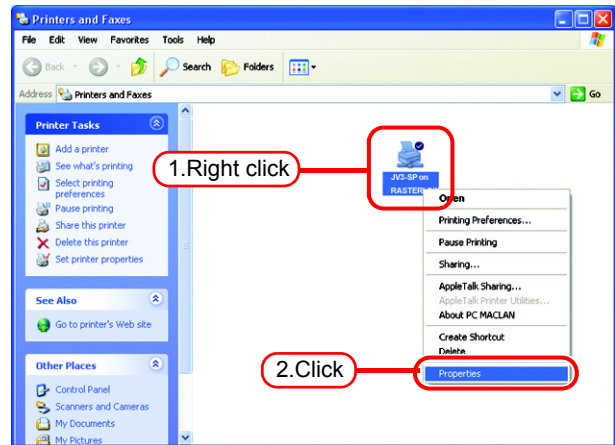
7 Click  .



8 Addition of the printer has been completed.

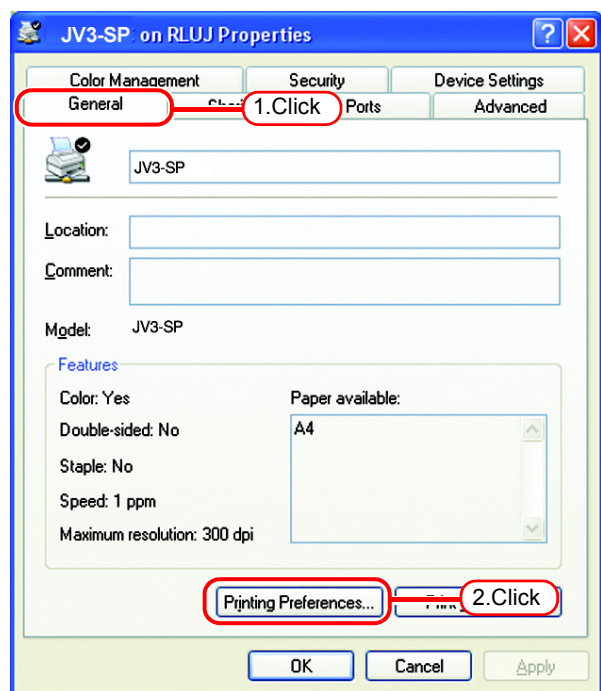


9 Right-click on the added printer, and then select the properties.

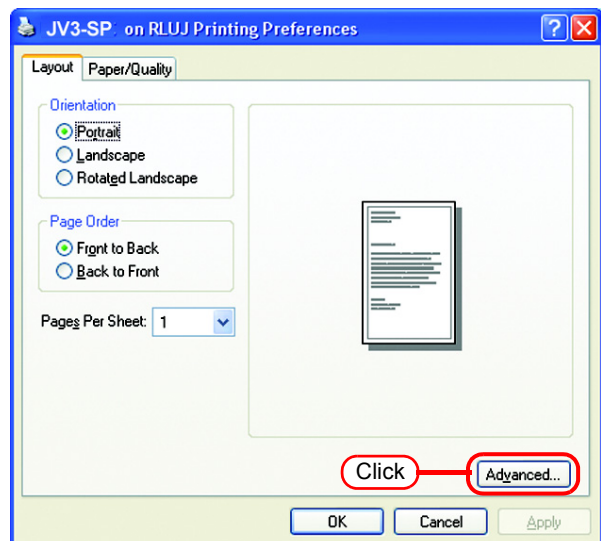


10 Click [General] tab.

Click  .

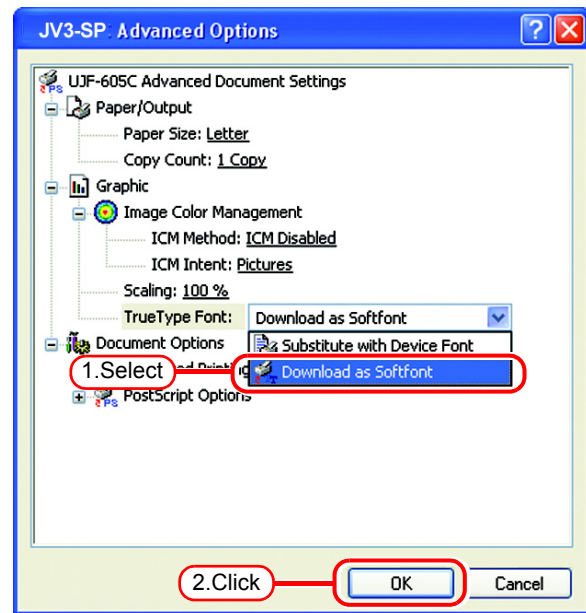


11 Click  .



## 12 Select "Download as Softfont".

Click .

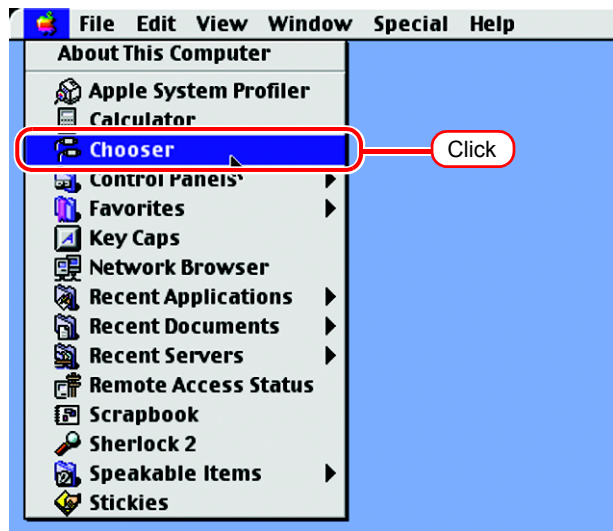


# Set Macintosh Client PC (OS 8.6 ~ 9.2.2)

## Hot folder setting by Chooser

To access the hot folder for Raster Link Pro II from the Macintosh client PC, specify the file server by the Chooser. To access the hot folder for Raster Link Pro II from the Macintosh client PC, installing PC MACLAN is required.

- 1 Select [Chooser] from [Apple menu].



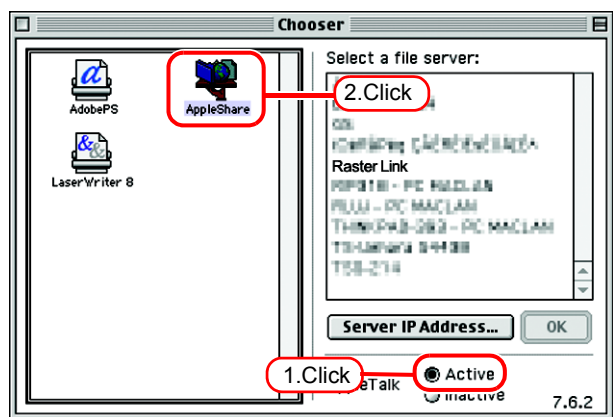
- 2 Click "Active" of "AppleTalk".

Click the [AppleShare] icon.

When the network is split into several zones, select a zone that contains the target file server from the list of AppleTalk zones.

All server names detected in the zone are displayed in the "Select a file server" list.

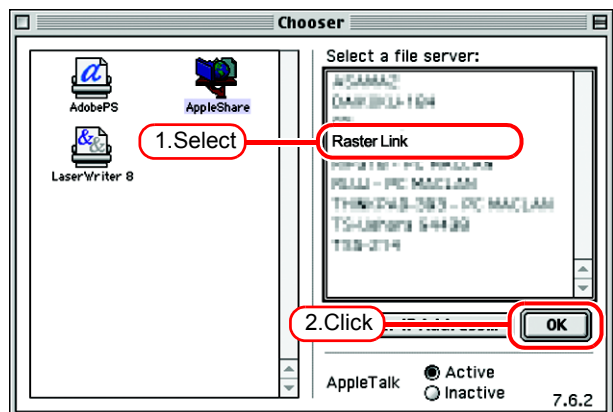
Select the objective file server from this list.



- 3 Click the target file server.

The Raster Link Pro II PC host name appears as the file server name.

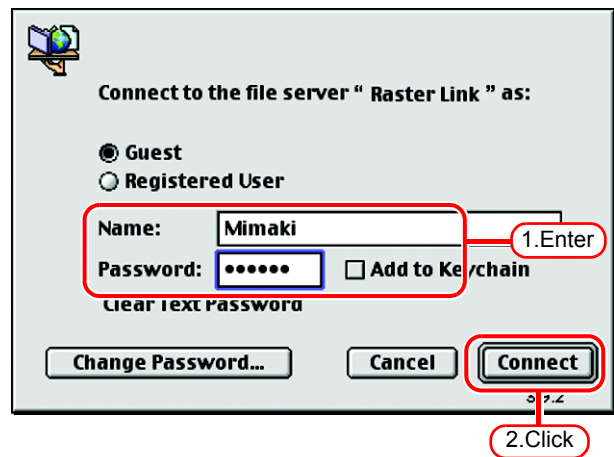
Click  .



#### 4 Enter the Name and the Password of the user registered in the Raster Link Pro II PC.

##### NOTE!

- When the Guest account is on, connect with "Guest".
- When the Guest account is off, connecting with "Guest" is disabled. In this case, executing [Changing a user's password] on the PC MACLAN file server is required. For details, see the PC MACLAN User's Guide.

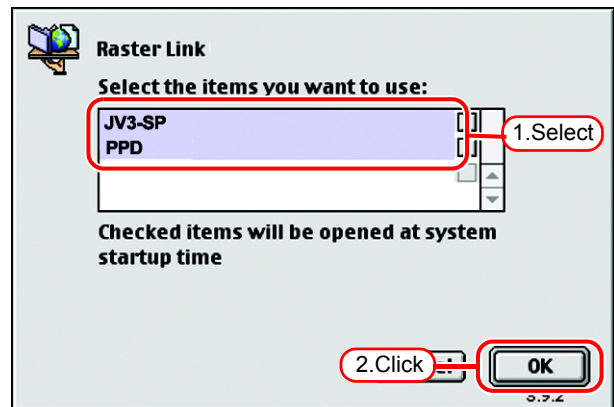


Click .

#### 5 Select the hot folder and the PPD folder to be used.



To automatically make the hot folder ready for use when Macintosh is restarted, put a check mark in the check box. However, it is necessary that the Raster Link Pro II PC has been started before the Macintosh starts.

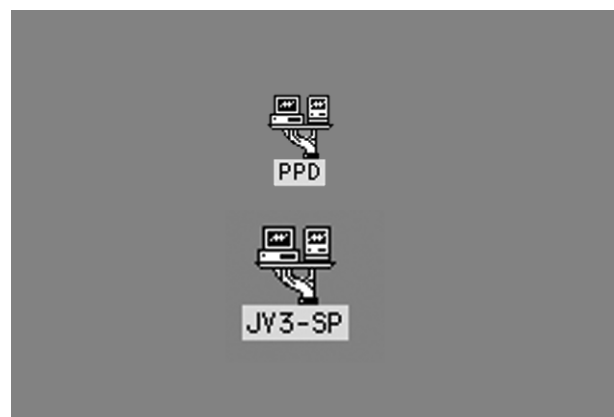


Click .

#### 6 The icon for the hot folder is created on the desktop, and accesses from the Macintosh client PC are enabled.

##### NOTE!

Before deleting a printer by [Printer Management], uninstalling Raster Link Pro II, or deleting the hot folder on the [Condition Management] screen, move the shared volume mounted by the Macintosh client to the trash can to unmount it. If it is still mounted, the Raster Link Pro II hot folder cannot be deleted.



# Install the Macintosh printer driver

For printing with the Raster Link Pro II, the Macintosh client PC uses the AdobePS Printer Driver (Adobe printer driver for Macintosh).

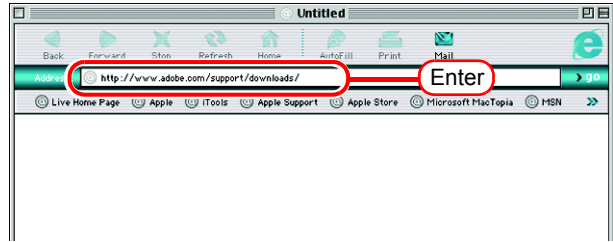
Be sure to use the Adobe Printer Driver of Version 8.7.2 or later.

## Download the printer driver for Macintosh client PC

If you do not have the Adobe PS, download the file from the Adobe Web site.

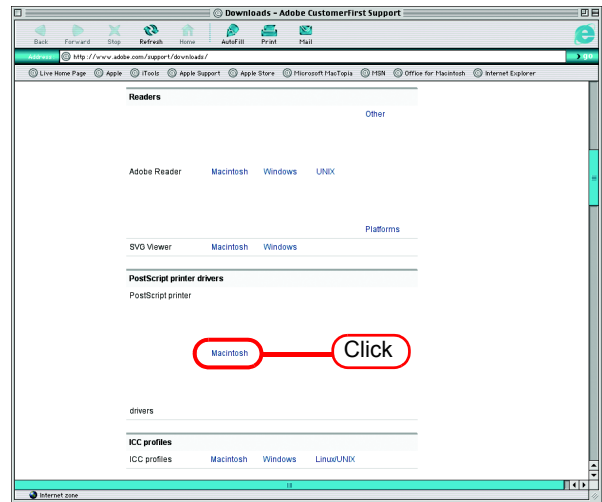
- 1 Start Internet Explorer, and then enter the following URL:

“http://www.adobe.com/support/downloads/”



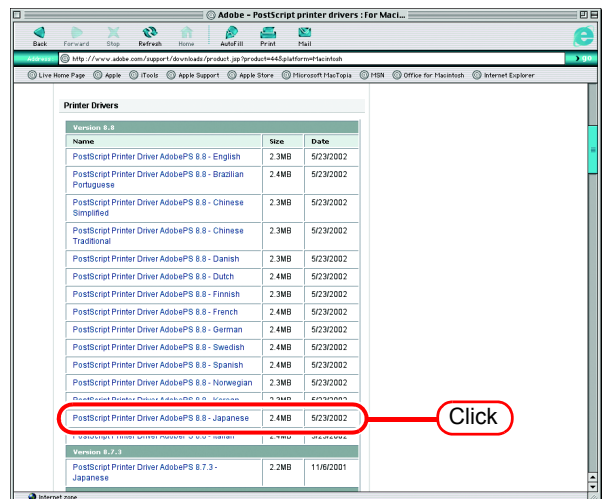
- 2 Select [Macintosh] from [PostScript printer drivers].

A list of Adobe PS downloads is displayed on the screen.

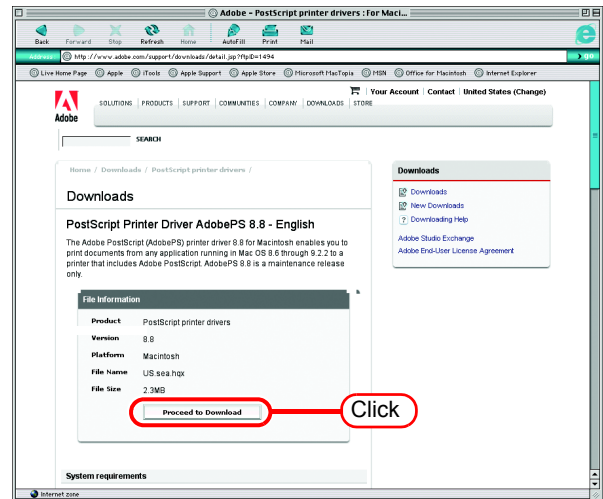


- 3 Click the driver of the language used from the [Printer Drivers]-[Version 8.8] column.

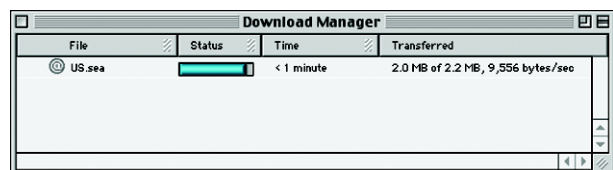
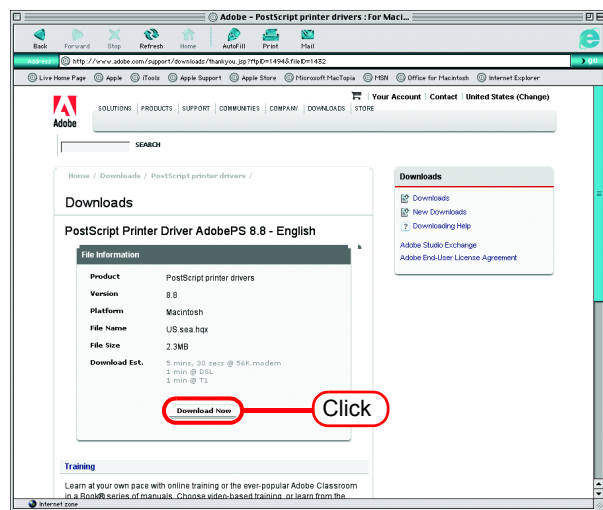
The screen for explanation of the download is displayed.



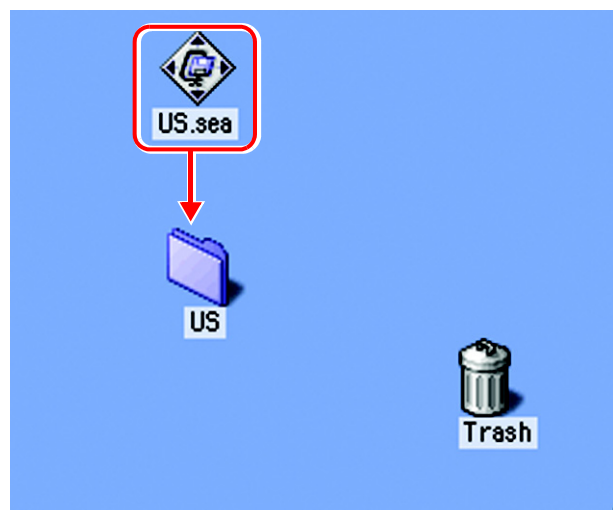
- 4 Click  .  
The download screen is displayed.



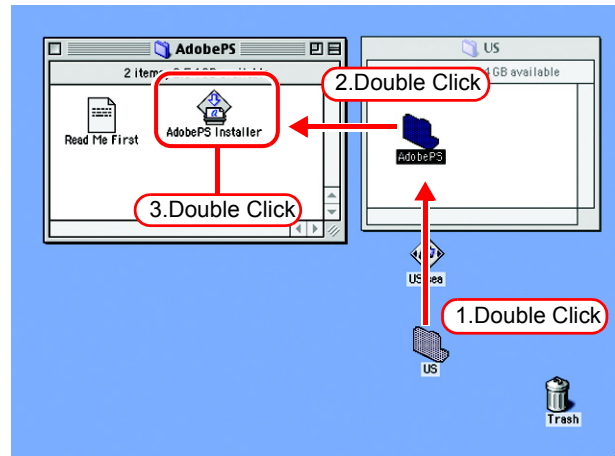
- 5 Click  .  
"Download Manager" is displayed, and downloading begins.



- 6 The file is decompressed and the driver folder is created on your desktop.  
If the file is not decompressed automatically, use StuffIt Expander or any other archiver.



- 7 Open the “AdobePS” folder in the “US” folder and then double-click “AdobePS Installer”.



- 8 Install the program according to the screen instructions.





## Install the PPD File

Install the Raster Link Pro II PostScript printer description file “MKRLP2EN.PPD”.

### Remove the Old PPD File

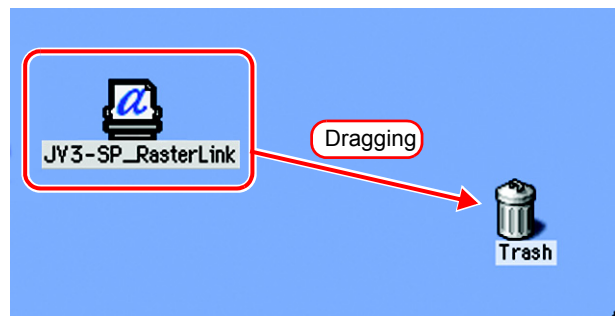
In case an old PPD file is installed, remove it before installing a new PPD file and desktop printer.

PPD file is installed in the two folders below.

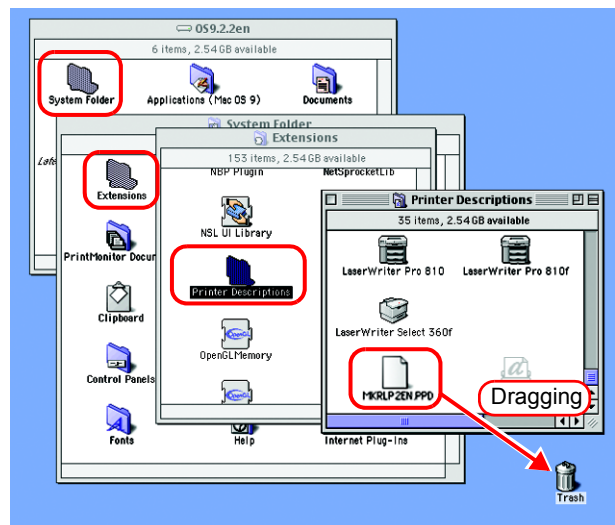
[System Folder] - [Extensions] - [Printer Descriptions]

[System Folder] - [Preference] - [Printing Prefs] - [Parsed PPD Folder]

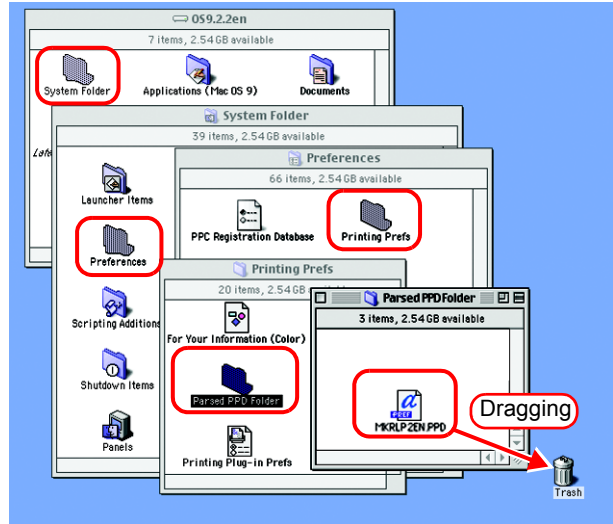
- 1 Drag the printer icon on Desktop to Trash.



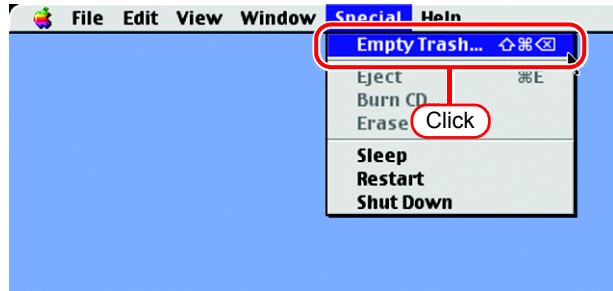
- 2 Delete “MKRLP2EN.PPD” from [System Folder] - [Extentions] - [Printer Descriptions].



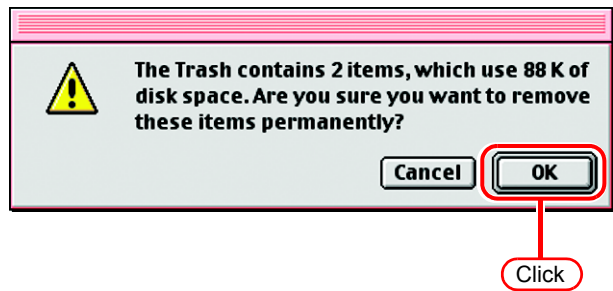
- 3 Delete “MKRLP2EN.PPD” from [System Folder] - [Preference] - [Printing Prefs] - [Parsed PPD Folder].



- 4 Select [Empty Trash...] from [Special] menu.




- 5 Click .  
The MKRLP2EN.PPD file is deleted.

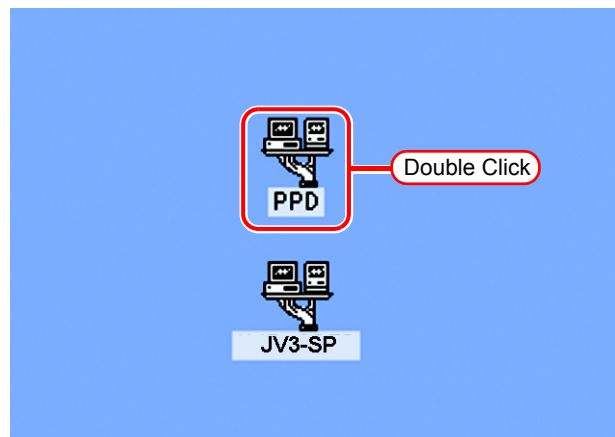


## Installing PPD files

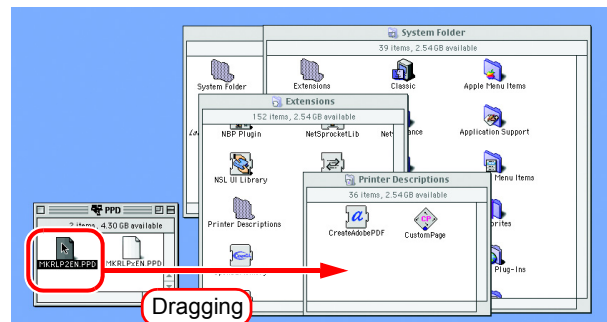
- 1 Double-click the icon of the PPD folder created by the Chooser on the desktop.  
Find “MKRLP2EN.PPD” file in the PPD folder and copy it to the desktop.

**NOTE!**

If the PPD folder cannot be found on the desktop, access the PPD folder by referencing “Hot folder setting by Chooser (  P.44)”.



- 2 Drag the “MKRLP2EN.PPD” file to [System Folder] - [Extensions] - [Printer Descriptions] folder.



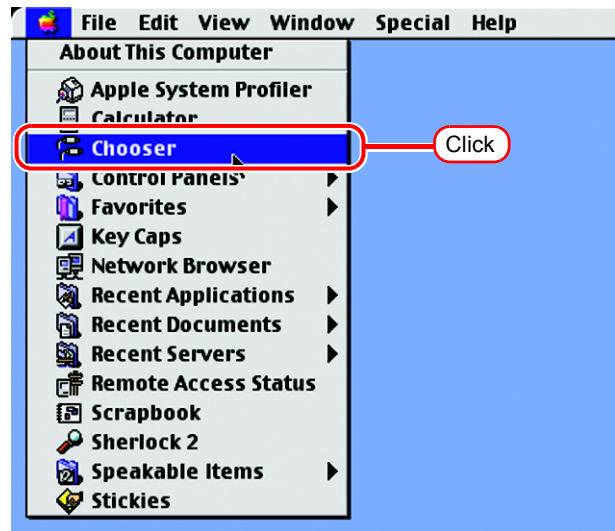
# Printer setting by Chooser

To access the printer driver for Raster Link Pro II from the Macintosh client PC, specify the Printer by the Chooser.

**NOTE!**

When there are several Raster Link Pro II installations in the same zone, change the Raster Link Pro II host names to unique names so that they do not conflict. ( P.10)

- 1 Select “Chooser” from the [Apple menu].

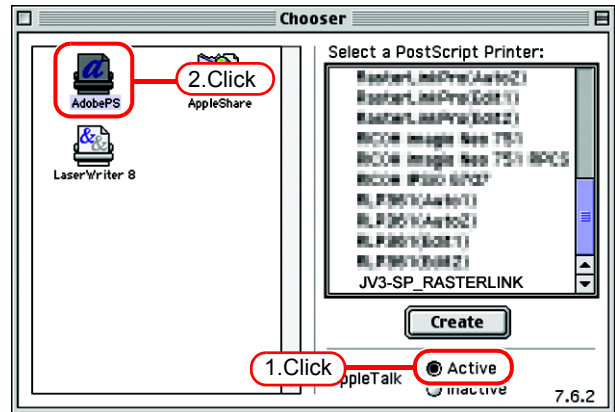


- 2 Click “Active” in “AppleTalk”.

Click the [AdobePS] icon.

If the network is divided into several zones, select the zone of the target printer driver from the AppleTalk zone list.

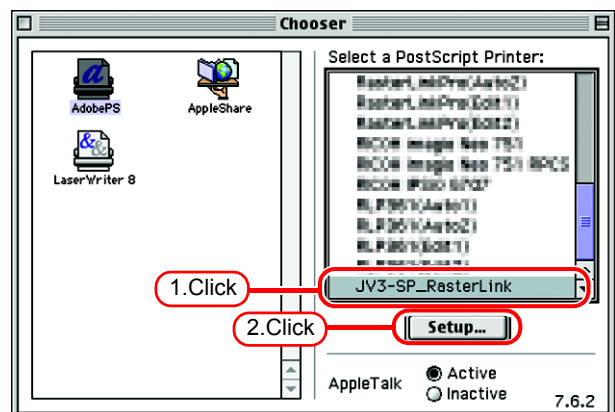
The PostScript printer name is “Printer Name”\_”host name”.



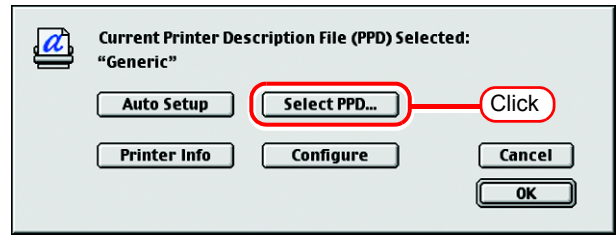
- 3 Select a printer of the Raster Link Pro II.

Select “JV3-SP\_RasterLink”.

Click  .

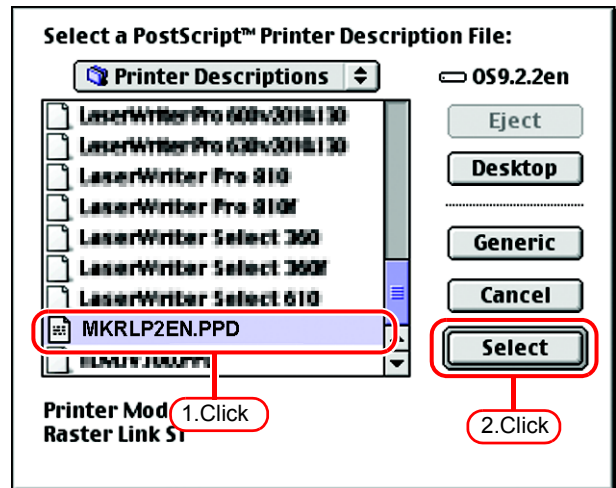


4 Click .



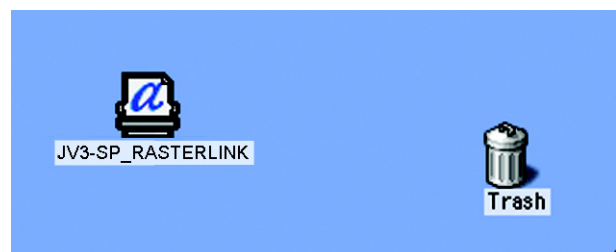
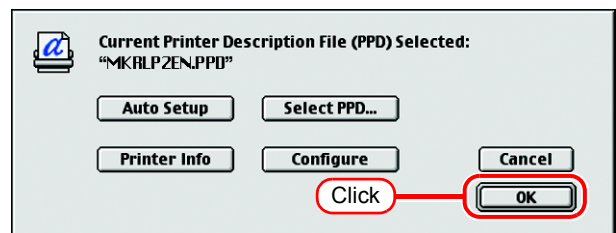
5 Select the PPD file copied from Raster Link Pro II.

Click .

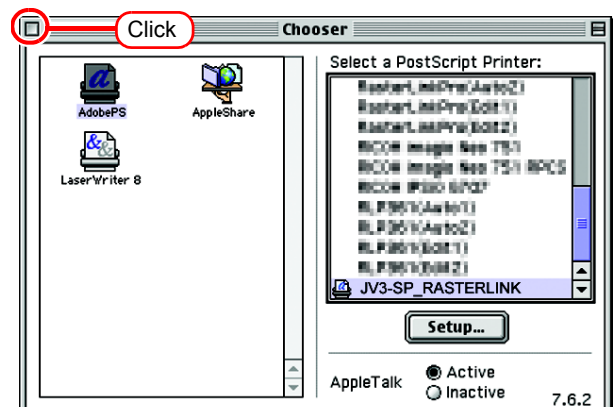


6 Click .

Your desktop displays the icon of the selected printer.



7 Click the close box to close Chooser. This completes the printer setup by Chooser. The printer selected here remains effective until another printer is selected by Chooser.

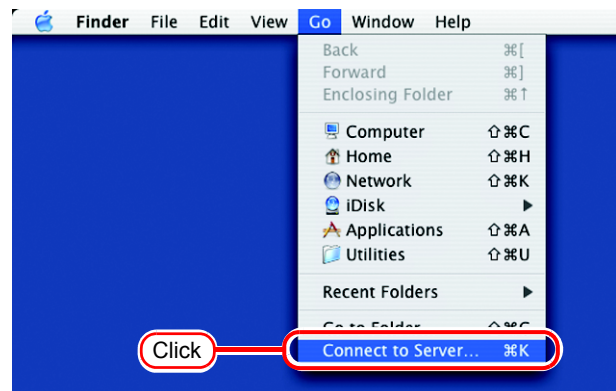


# Set Macintosh Client PC (OS 10.3)

## Hot folder setting by Finder

Select a file server by Finder to access the hot folder of the Raster Link Pro II from the Macintosh client.

- 1 Open [Go] - [Connect to Server] from [Finder].



- 2 Enter the "Server Address" as follows.  
"afp:/at/Raster Link Pro II PC host name" or "afp://Raster Link Pro II PC IP address"

(How to check the IP address  P.63)

Click .



### NOTE!

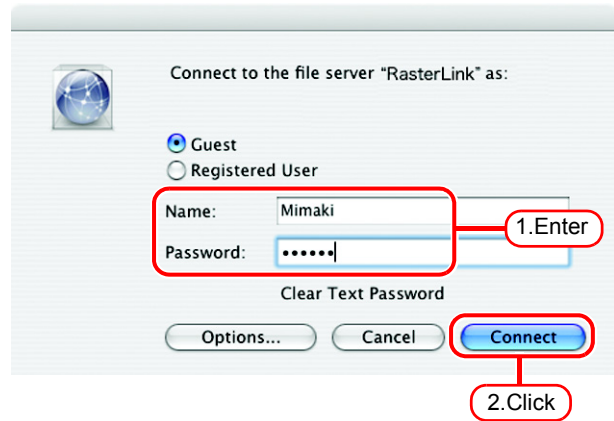
- Make sure that "Make AppleTalk Active" is checked in [System Preferences] - [Network] - [Show: Built-in Ethernet] - [AppleTalk] of "Apple Menu".
- Do not enter the address for Samba ("smb://...") into "Server Address," and also do not specify the Raster Link Pro II PC by browsing in the [Network] at [Finder]. Because Raster Link Pro II does not support Samba in the Mac OS X.

- 3** Enter the “Name” and “Password” of the user registered in the PC in which Raster Link Pro II is installed.

**NOTE!**

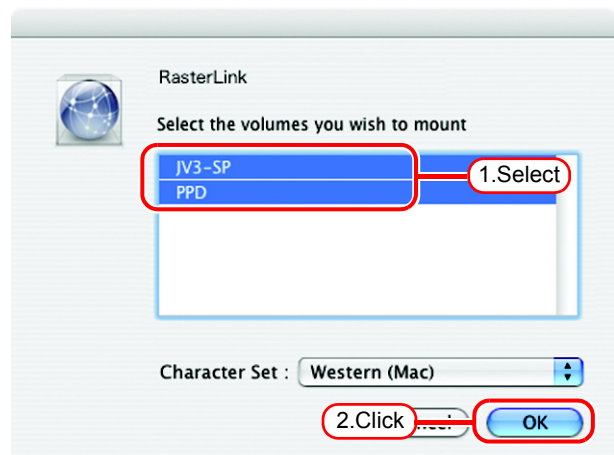
- When the Guest account is on, connect with “Guest”.
- When the Guest account is off, connecting with “Guest” is disabled. In this case, executing [Changing a user’s password] on the PC MACLAN file server. For details, see the PC MACLAN User’s Guide.

Click .

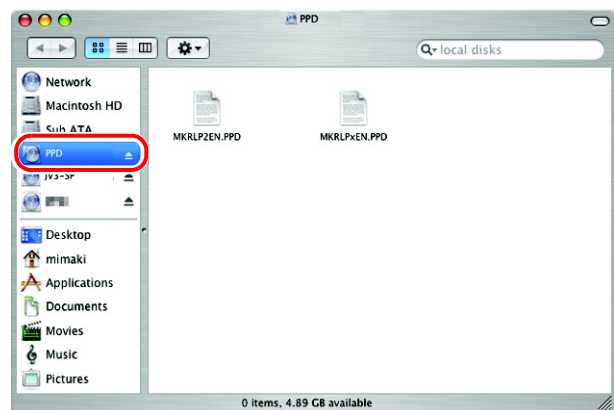


- 4** Select the hot folder and the PPD folder.

Click .

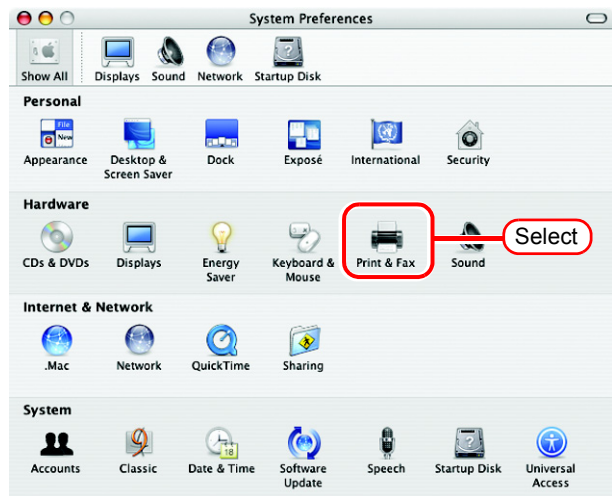


- 5** The hot folder and the PPD folder are mounted and accessible from the Macintosh client PC.

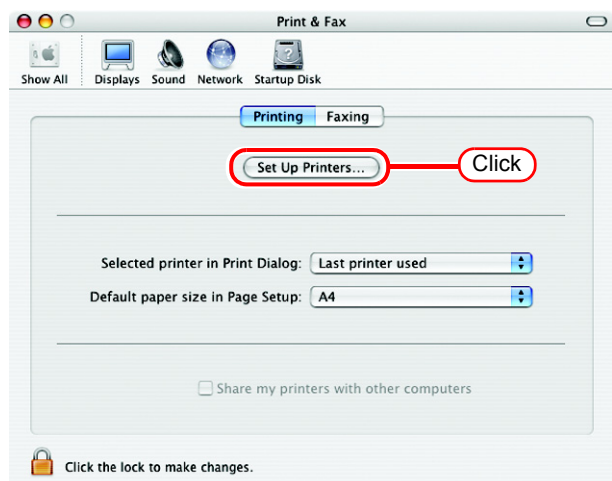


# Printer setting

- 1 Select [Print & Fax] from [System Preferences].



- 2 Click [Set Up Printers...].



- 3 Click [Add].





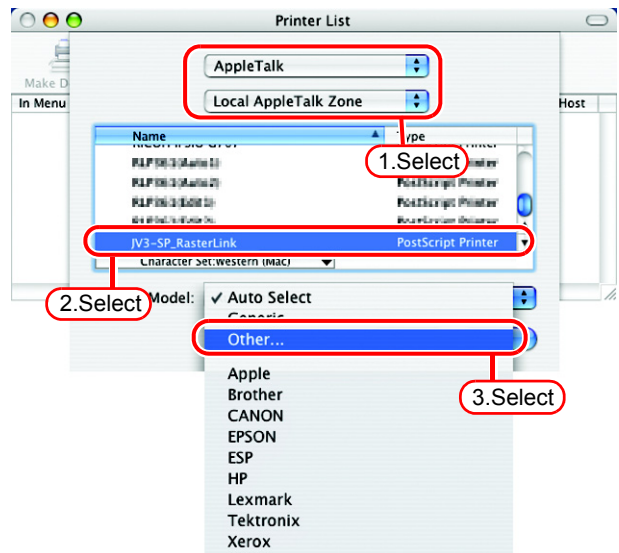
- 4 Select the “AppleTalk” zone.  
The printer name is “Printer Name”\_“host name”.

**NOTE!**

Make sure to specify the “Apple Talk” because Raster Link Pro II does not support the “Windows Printing” in the Mac OS X.

Select “JV3-SP\_RasterLink”.

Select “Other” for “Printer Model”.

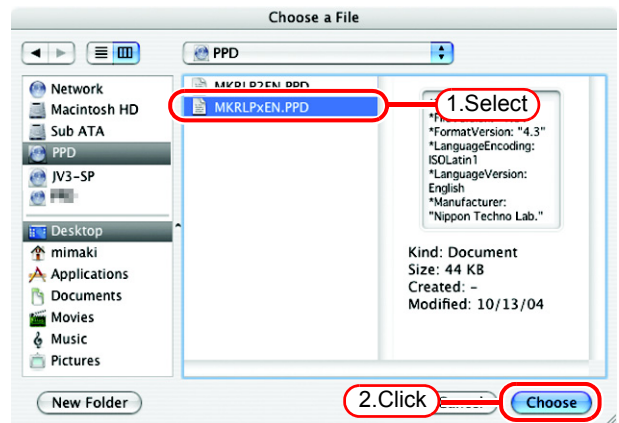


- 5 Select “MKRLPxEN.PPD” in the mounted PPD folder.

Click  .

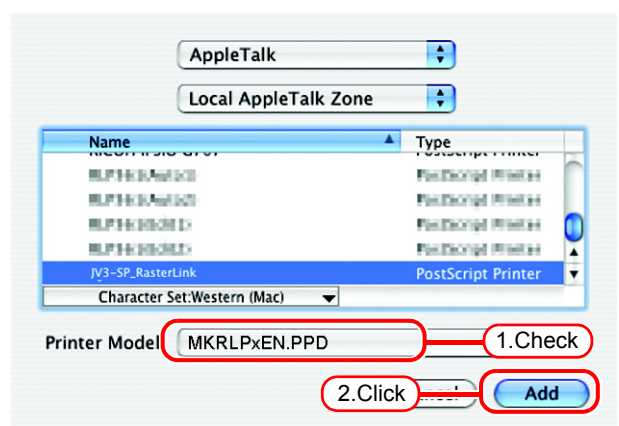
**NOTE!**

Do not use “MKRLP2EN.PPD” with OS X.

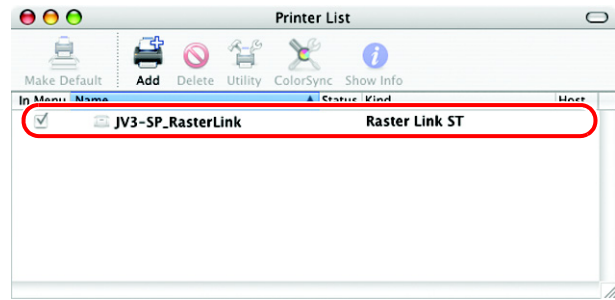


- 6 Check that the PPD file selected in Step 5 is displayed at the “Printer Model”.

Click  .



**7** The new printer is added to the [Printer List].



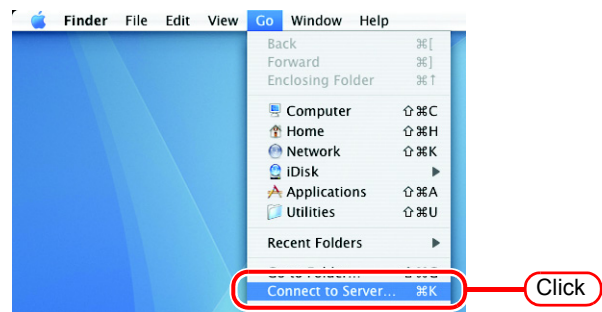
**8** Repeat steps 3 to 6 to add the required Printers.


# Set Macintosh Client PC (OS 10.4)

## Hot folder setting by Finder

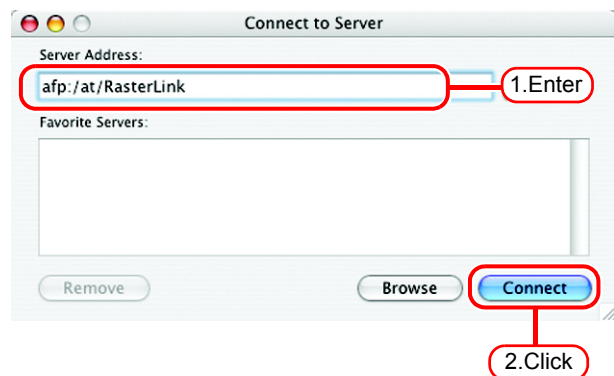
Select a file server by Finder to access the hot folder of the Raster Link Pro II from the Macintosh client.

- 1 Open [Go] - [Connect to Server] in the [Finder].



- 2 Enter the "Server Address" as follows.  
 "afp:/at/Raster Link Pro II PC host name" or  
 "afp://Raster Link Pro II PC IP address"  
 (How to check the IP address  P.63)

Click .



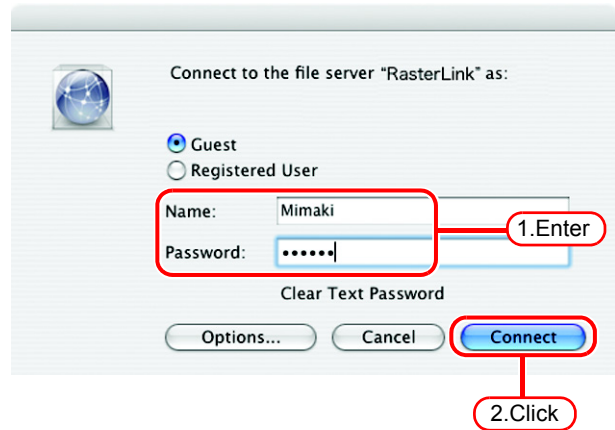
### NOTE!

- Make sure that "Make AppleTalk Active" is checked in [System Preferences] - [Network] - [Show: Built-in Ethernet] - [AppleTalk] of "Apple Menu".
- Do not enter the address for Samba ("smb://...") into "Server Address," and also do not specify the Raster Link Pro II PC by browsing in the [Network] at [Finder]. Because Raster Link Pro II does not support Samba in the Mac OS X.

**3** Enter the “Name” and “Password” of the user registered in the PC in which Raster Link Pro II is installed.

**NOTE!**

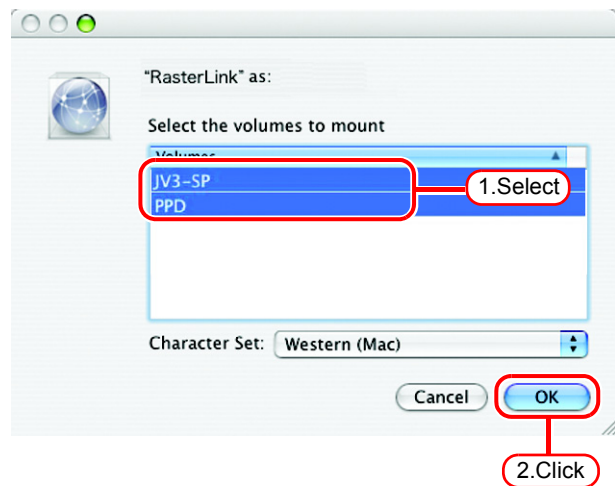
- When the Guest account is on, connect with “Guest”.
- When the Guest account is off, connecting with “Guest” is disabled. In this case, executing [Changing a user’s password] on the PC MACLAN file server. For details, see the PC MACLAN User’s Guide.



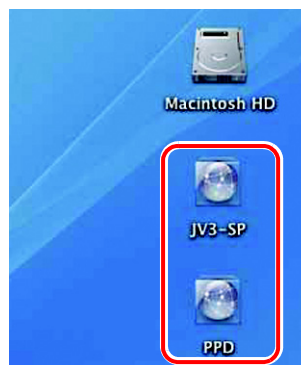
Click .

**4** Select the hot folder and the PPD folder.

Click .

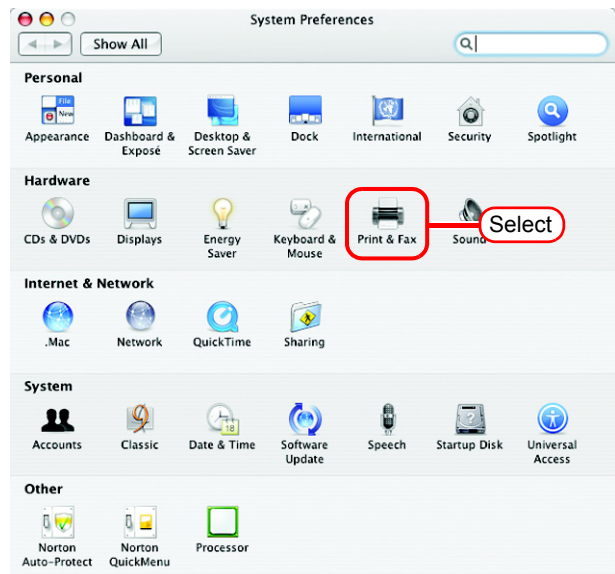


**5** The hot folder and the PPD folder are mounted and accessible from the Macintosh client PC.

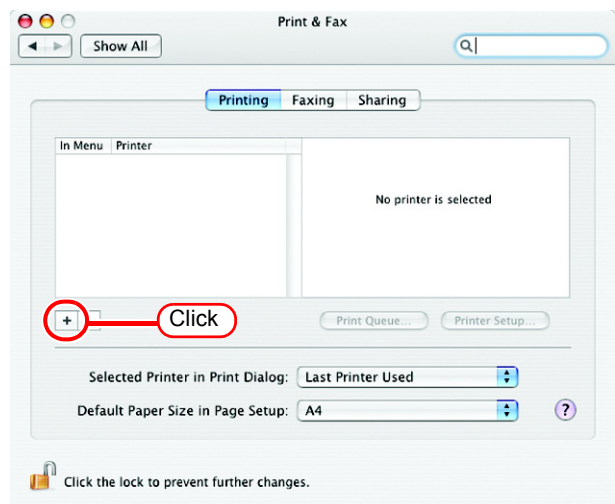


## Printer setting

- 1 Select [Print & Fax] from [System Preferences].

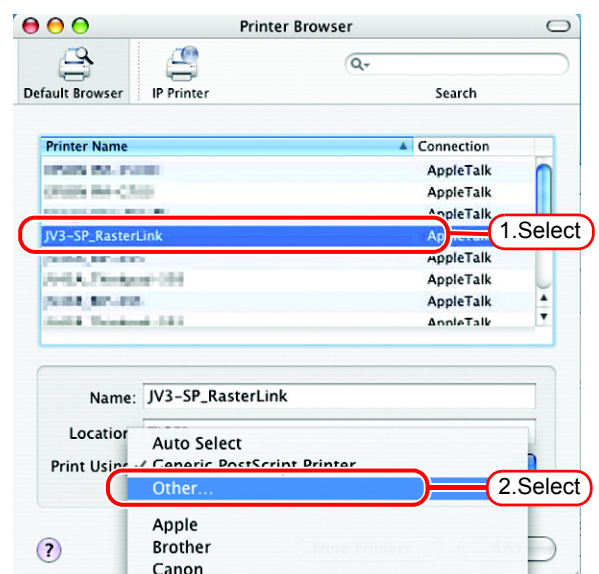


- 2 Click .



- 3 Select "JV3-SP\_RasterLink" which [Connection] is shown as "Apple Talk" from the printer browser list. The printer name is "Printer Name"\_"host name".

Select "Other" for "Print Using".

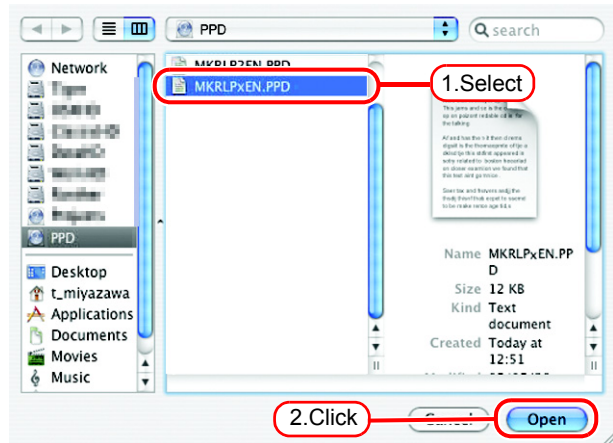


- 4 Select “MKRLPxEN.PPD” in the mounted PPD folder.

Click  .

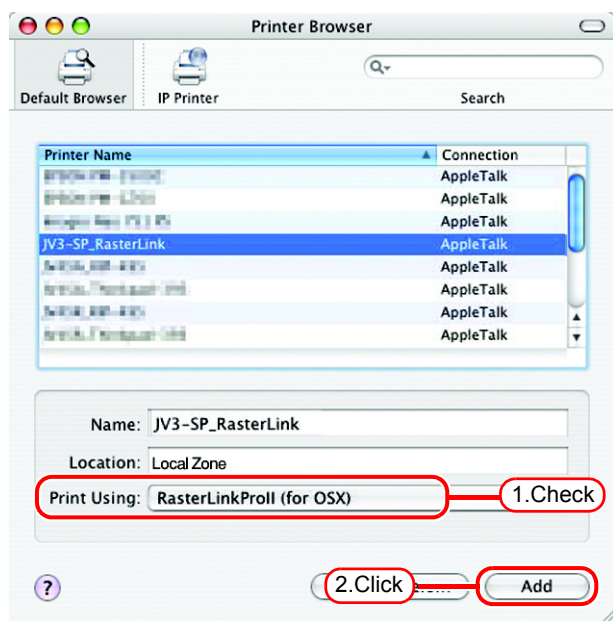
**NOTE!**

Do not use “MKRLP2EN.PPD” with OS X.

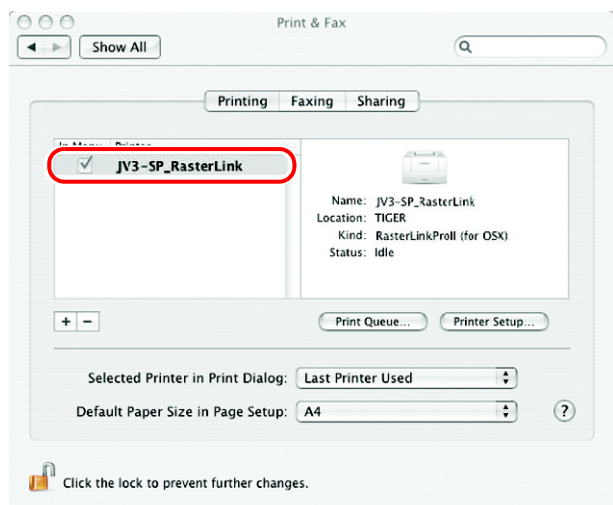


- 5 Check that “RasterLinkProII(for OSX)” is displayed in “Print Using”.

Click  .



- 6 The added printer appears in the [Print & Fax] list.

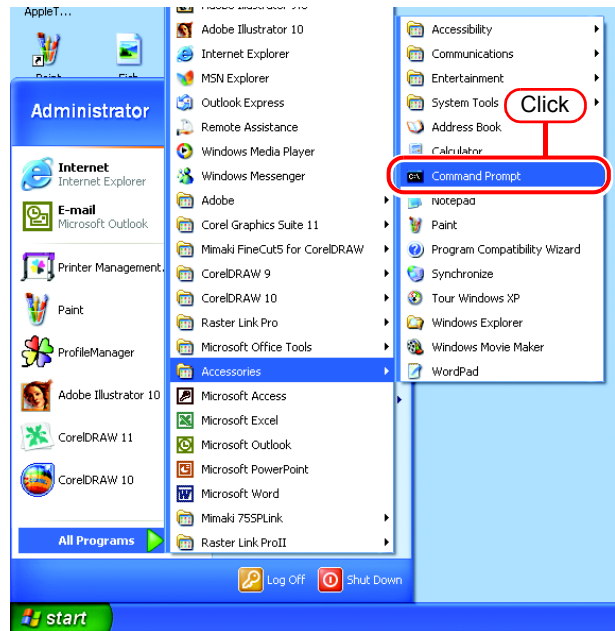


- 7 Repeat steps 2 to 6 to add the required printers.

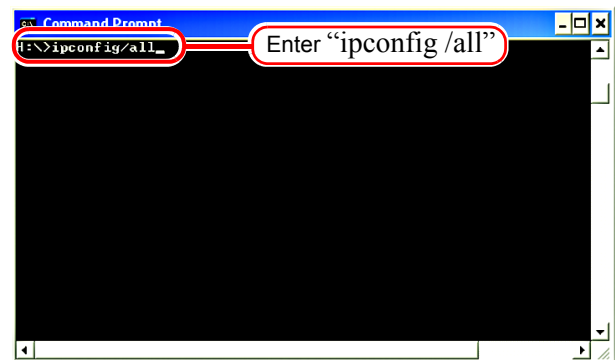
# Confirm the address

To access Raster Link Pro II, Host Name or IP Address of the PC which Raster Link Pro II installed is needed. Confirm the Host Name or the IP Address as follows.

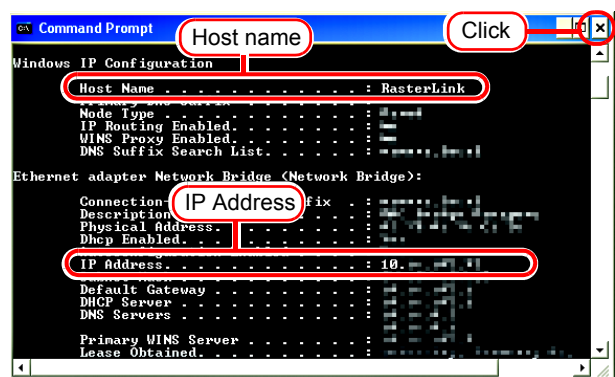
- 1 Select [Command Prompt]  
[Start] menu - [All Programs] - [Accessories] - [Command Prompt]



- 2 Enter the following words and press Enter.  
"ipconfig /all"



- 3 Host Name or IP Address of Raster Link Pro II are displayed.  
Click the Close button.



# **Re-Install Raster Link Pro II**

This section explains how to uninstall or upgrade the Raster Link Pro II.



---

# Uninstall Raster Link Pro II

**NOTE!**

- All Raster Link Pro II setting is deleted when it is uninstalled.
- Before starting uninstalling, check the following items.
  - \* Raster Link Pro II is not running.
  - \* The Raster Link Pro II hot folder is not open (including via the network).
  - \* The Raster Link Pro II printer is not being used (including via the network).
  - \* The Raster Link Pro II hot folder and printer is not being mounted from Macintosh clients with a Macintosh network connection tool (such as PC MACLAN).

## Check that the shared folder contents are deleted

When using hot folders from Mac OS 9.x, after uninstalling Raster Link Pro II, there is possibility not to delete the installation directory.

Also when Deleting the Printer with [Printer Management], or when deleting the hot folder with [Condition Management], the message “Cannot remove file in the Hot Folder” may appear, and the process cannot be completed.

This occurs because the Macintosh client creates special folders and files in the hot folder.

To avoid this, before uninstalling Raster Link Pro II, deleting the Printer or deleting the hot folder, delete the special folders in the shared folder.

The shared folders to delete are as follows.

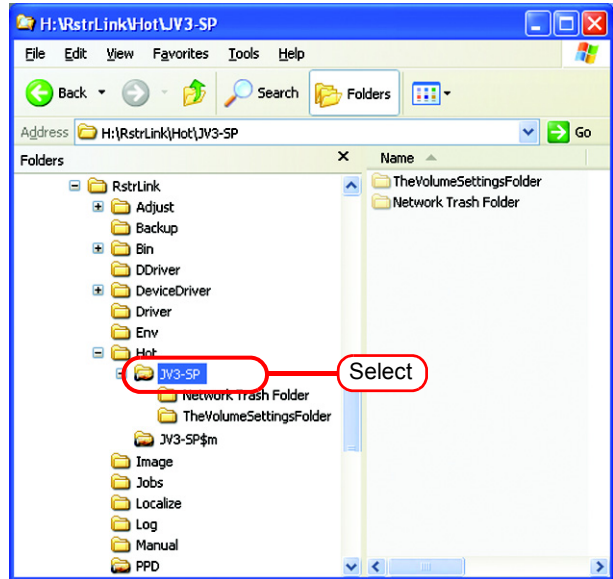
- Before uninstallation
  - Installation folder\Hot\all hot folders
  - Installation folder\PPD
- Before Deleting Printers with [Printer Management]
  - Installation folder\Hot\all hot folders
- Before deleting hot folders with [Condition Management]
  - Installation folder\Hot\condition set name hot folders

---

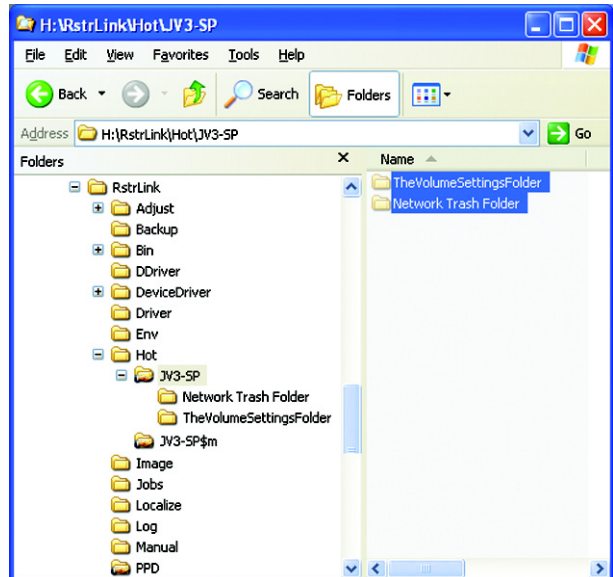
## Check that the hot folder contents are deleted

In this example, JV3-SP is registered with [Printer Management].

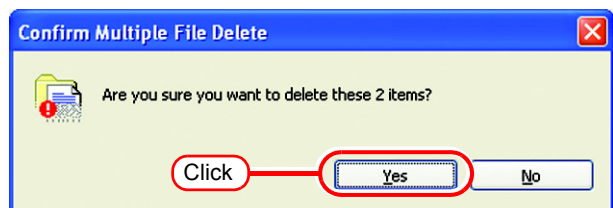
- 1 In Explorer, select the hot folder in the installation folder\Hot folder. If there are no subfolders inside the hot folder, deleting is not necessary.



- 2 If there are subfolders in the hot folder, select them with the mouse and try deleting them with the  key.

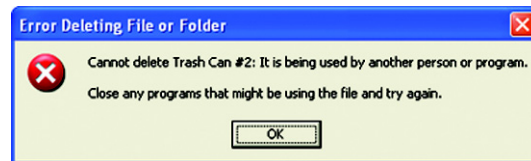


- 3 Click  on the "Confirm Multiple File Delete" screen. If subfolders are deleted, unmounting is not necessary.

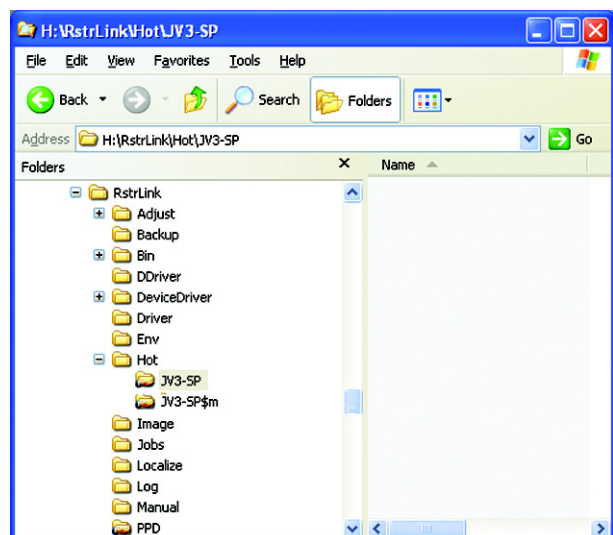


- 4** If an error message appears, the hot folder is not deleted.

With the Macintosh client, move the folder mounted by AppleShare to the trash can to unmount it. If it is already unmounted, mount the folder again with AppleShare, then unmount it.



- 5** After unmounting the folder in step 4, perform the operation in step 2 again, and check whether the sub-folders inside the folder can be deleted.

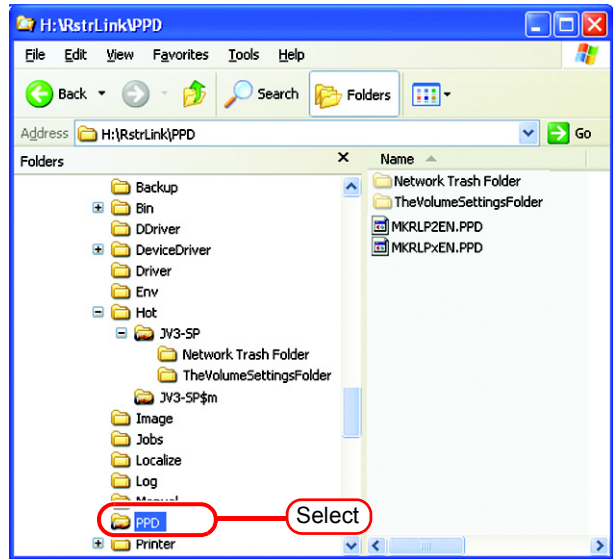


- 6** Perform steps 1 to 5 for all the sub-folders in the installation folder\Hot folder.

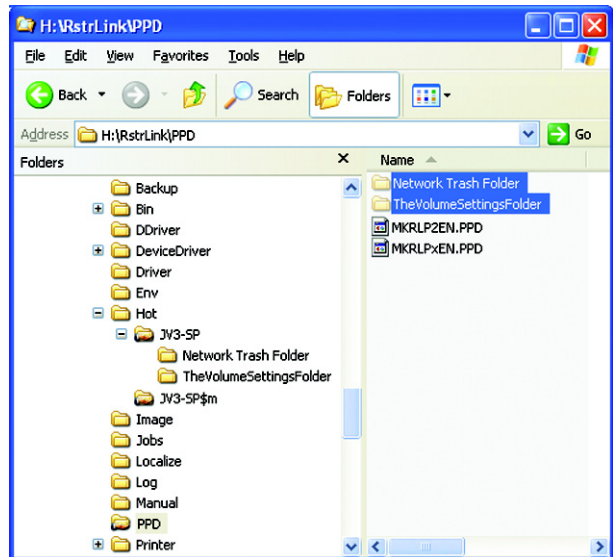
---

## Check that the PPD folder contents are deleted

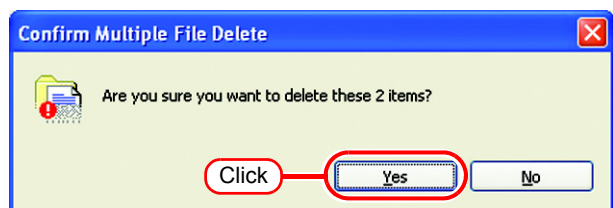
- 1 In Explorer, select the installation folder\PPD folder.  
If there are no subfolders inside the folder, deleting is not necessary.



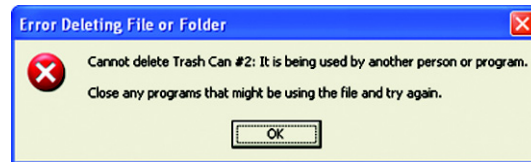
- 2 If there are subfolders in the hot folder, select them with the mouse and try deleting them with the  key.



- 3 Click  on the "Confirm Multiple File Delete" screen.  
If subfolders are deleted, unmounting is not necessary.



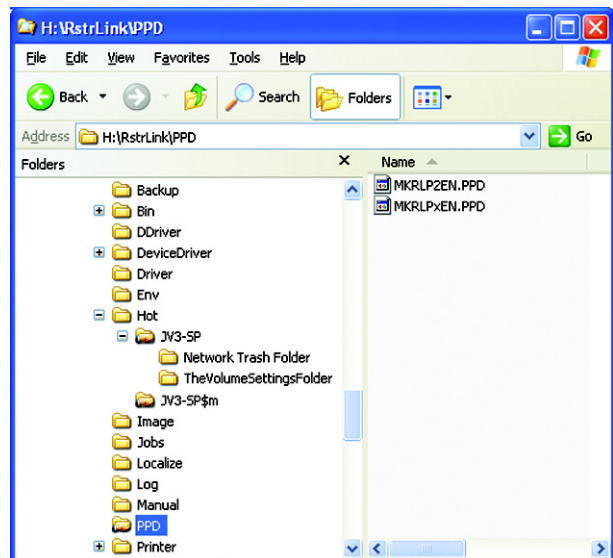
- 4 If an error message appears, the hot folder is not deleted.



With the Macintosh client, move the folder mounted by AppleShare to the trash can to unmount it. If it is already unmounted, mount the folder again with AppleShare, then unmount it.

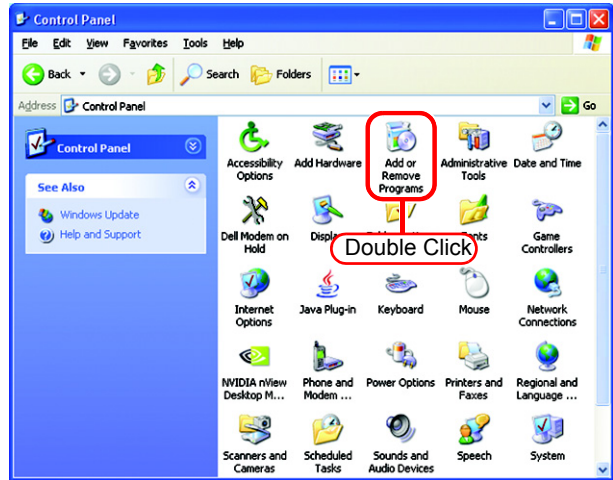


- 5 After unmounting the folder in step 4, perform the operation in step 2 again, and check whether the sub-folders inside the folder can be deleted.



# Uninstall Raster Link Pro II

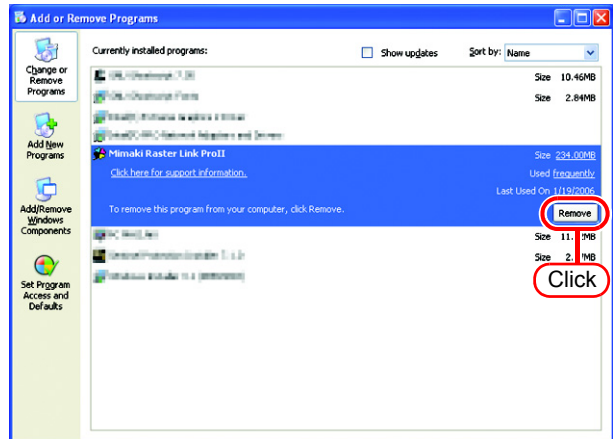
- 1 Double click “Add or Remove Programs” in [Control Panel].  
The [Add or Remove Programs] window opens.



- 2 From the “Currently installed programs:” list, select “Mimaki Raster-Link Pro II”.

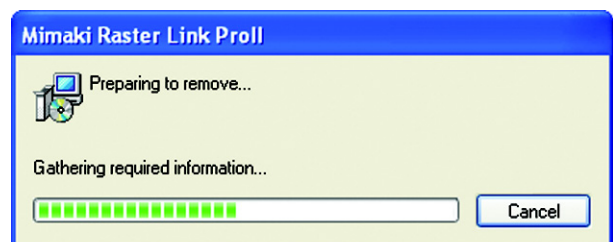
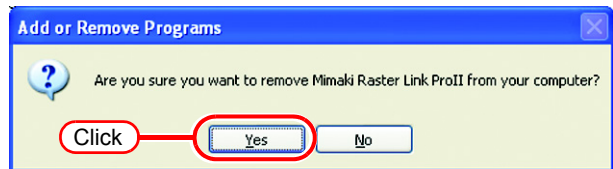
Click .

The “Add or Remove Programs” confirmation dialog box opens.

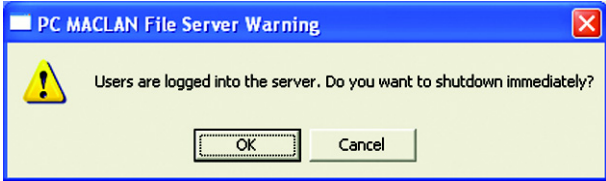


- 3 Uninstallation starts.

Click .



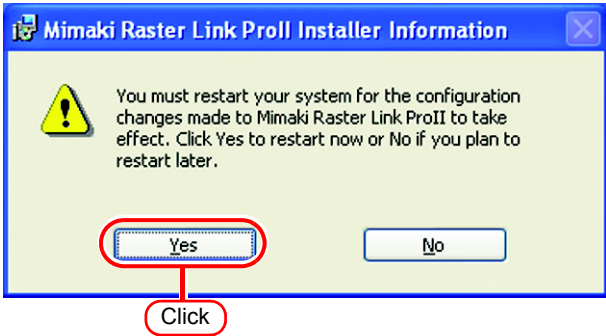
**NOTE!** If PCMACLAN is installed on the computer for Raster Link Pro II, the right warning message may be displayed during the uninstall.  
Click  to stop the server. The computer is not shutdown.



**NOTE!** The right message may be displayed during un-installation. In this case, delete the installation folder manually after un-installation.



**4** The right dialog is displayed after a completion of un-installation.  
Click  and restart.



**NOTE!**

- If PC MACLAN is used, it is required to execute [Remove folder information] of PC MACLAN file server after the uninstallation of the Raster Link Pro II. For details, see the following in the PC MACLAN User's Guide:  
Using the File Server .....Remove folder information
- When you create the "Work Folder" in any place other than the installation folder of the Raster Link Pro II, delete the work folder after the restart.
- Make sure the following folders are not remained when you wish to reinstall after un-installation of the Raster Link Pro II.
  - \* Previous installation folder
  - \* Previous work folder
 When the above two folders are still remained, delete them before you start reinstallation.  
The Raster Link Pro II may not start normally, if you do not delete the folders.

---

---

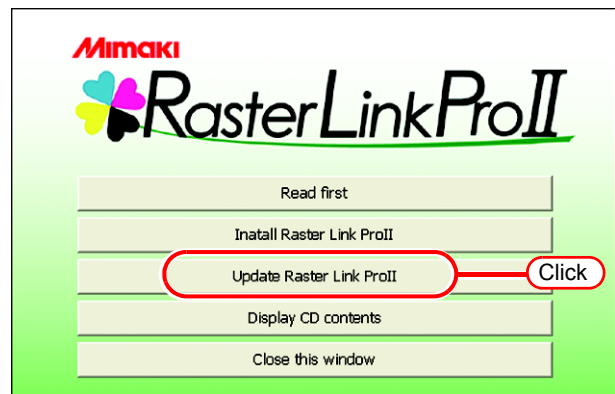
# Updating version of Raster Link Pro II

- 1 Mount the installation CD for Raster Link Pro II whose version is newer than the currently installed one onto the PC.

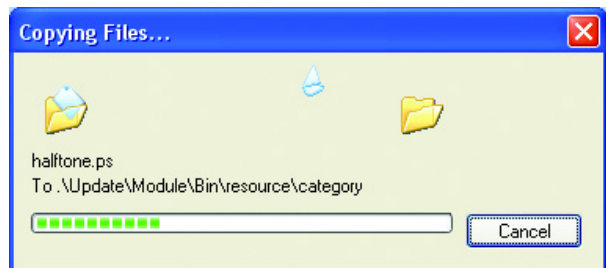
The Raster Link Pro II installation menu automatically starts.

**NOTE!** Updating to an older version cannot be executed.

- 2 Click  of Raster Link Pro II installation menu.



Preparation for update starts.

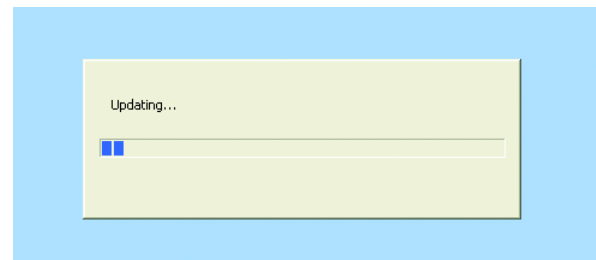
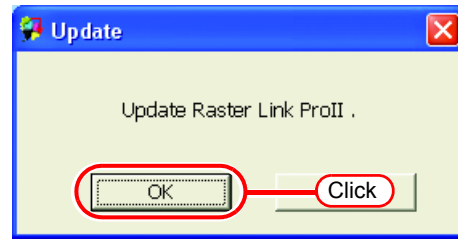




- 3** The start update confirmation dialog box appears.

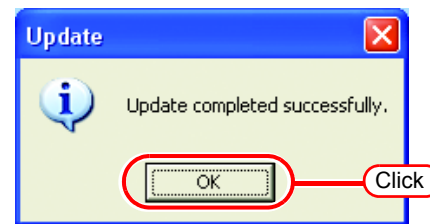
Click .

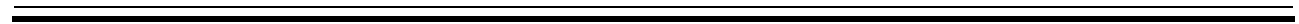
Update starts.



- 4** When update of Raster Link Pro II is completed, a confirmation dialog box appears.

Click .









D201554-1.10-15122006

Printed in Japan

© 2006 MIMAKI ENGINEERING CO., LTD. Allright reserved.

EA

IT