

Mimaki



RasterLink Pro II

Raster Link Pro II

GP-604D/GP-1810D Reference Guide For Discharging

This manual explains method of Raster Link Pro II settings to discharge.

MIMAKI ENGINEERING CO., LTD.

TKB Gotenyama Building, Kitashinagawa, Shinagawa-ku, Tokyo 141-0001, Japan

Phone: +81-3-5420-8671 Fax: +81-3-5420-8687

URL: <http://www.mimaki.co.jp/>

E-mail: trading@mimaki.co.jp

Version 1.00

D201560

About this User's Guide

This guide explains the image processing method and a method of Raster Link Pro II settings to remove colors (discharging) from T-shirts dyed by the GP-604D / GP-1810D.

For basic methods of Raster Link Pro II handling, see the Reference Guide.

Notations

Menu items are enclosed in quotation marks like “Discharge Composition”.

Buttons in dialog box are framed like .

Symbol

NOTE! indicates a caution you should pay attention.

Notice

- It is strictly prohibited to write or copy a part or whole of this document without our approval.
- The contents of this document may be subject to change without notice.
- Due to improvement or change of this software, the description of this document could be partially different in specification, for which your understanding is requested.
- It is strictly prohibited to copy this software to other disk (excluding the case for making backup) or to load on the memory for the purpose other than executing it.
- With the exception of what is provided for in the warranty provisions of MIMAKI ENGINEERING CO., LTD., we do not assume any liability against the damages (including but not limited to the loss of profit, indirect damage, special damage or other monetary damages) arisen out of the use or failure to use of this product. The same shall also apply to the case even if MIMAKI ENGINEERING CO., LTD. had been notified of the possibility of arising damages in advance. As an example, we shall not be liable for any loss of the media (works) made using this product or indirect damages caused by the product made using this media.

Adobe, the Adobe logo, Photoshop, Illustrator and PostScript are trademarks of Adobe System Incorporated. All brand names and product names are trademarks or registered trademarks of their respective companies.

Table of contents

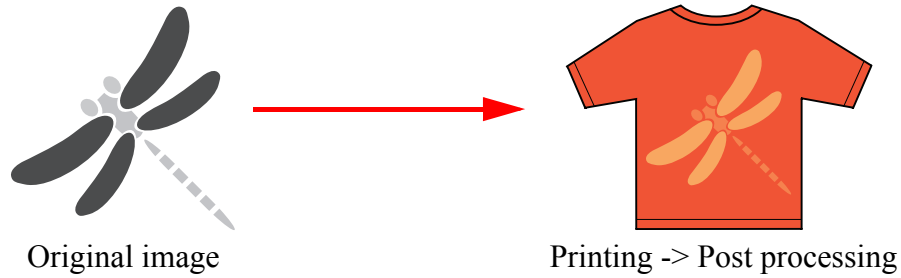
About this User's Guide	2
Notice	2
Discharging method	4
Printing only by discharge liquid.....	4
Printing simultaneously with color image	4
Printing with only discharge liquid	5
Changing color of printed image for discharging.....	5
Gray-scale image and finish	5
Processing method for Photoshop	6
Processing method for Illustrator	8
Common operations.....	8
A. Converting to gray-scale image with vector objects left as is	9
B. Processing to gray-scale image by rasterizing	10
Raster Link Pro II settings	12
Changing Printing Conditions	12
Printing simultaneously with color image	13
Raster Link Pro II settings	13
Job settings.....	13

Discharging method

There are several discharging methods as follows:

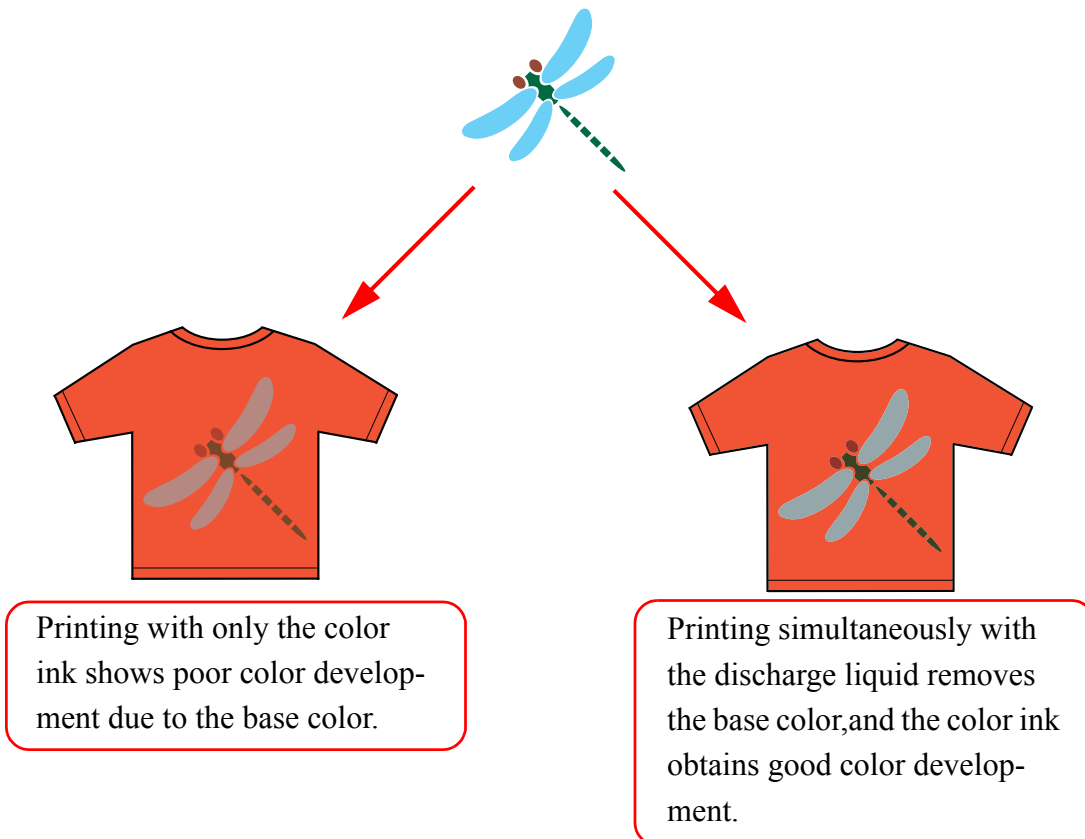
Printing only by discharge liquid

Print the image by using only the discharge liquid.
Create a monochrome image as the original image.



Printing simultaneously with color image

Print the color ink and the discharge liquid simultaneously.
If a colored T-shirt is printed with only the color ink, the image does not stand out. Printing by simultaneously using the discharge liquid removes the color on the T-shirt, and the color ink obtains good color development.



Printing with only discharge liquid

Changing color of printed image for discharging

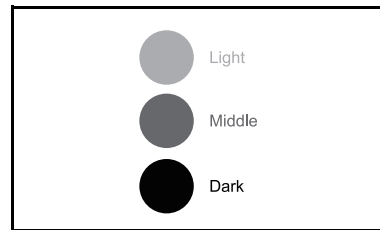
When the image to be printed has color data, select “Gray scale” (expressing the image by only the black) for the color of the image data.

Gray-scale image and finish

The discharge liquid is coated most to the darkest portion within the gray-scale image to be printed. That is, the darkest portion of the **original gray-scale image is discharged most when finished.**

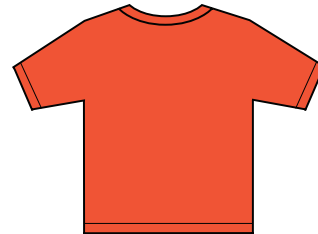
Example)

The image on the right is used as the original image.



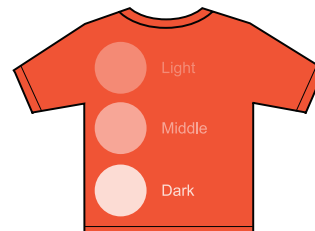
The image is printed on a colored T-shirt by using the discharging agent, and then postprocessing is executed.

↓ Printing



As shown on the right, the darkest colored portion of the original image is discharged most.

↓ After printing, post processing is executed.

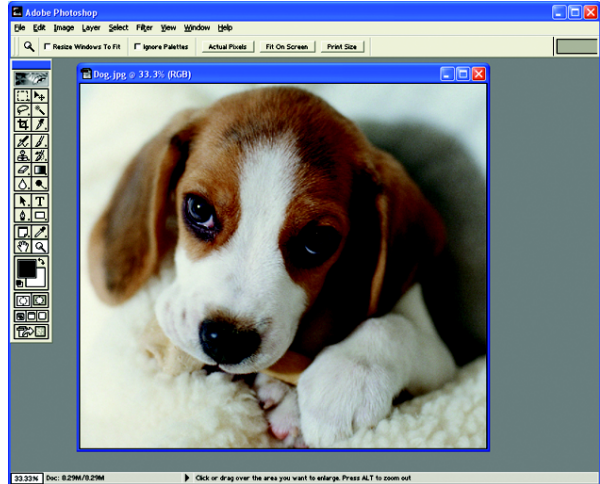


For ordinary printers, a dark portion of the image is printed darkly. However, as a result of printing with the discharge liquid and postprocessing, dark portions of the original image are printed light, and light portions are printed darkly. That is, contrasting density of original image appears inversely. Therefore, the image to be printed requires and black inversion before printing.

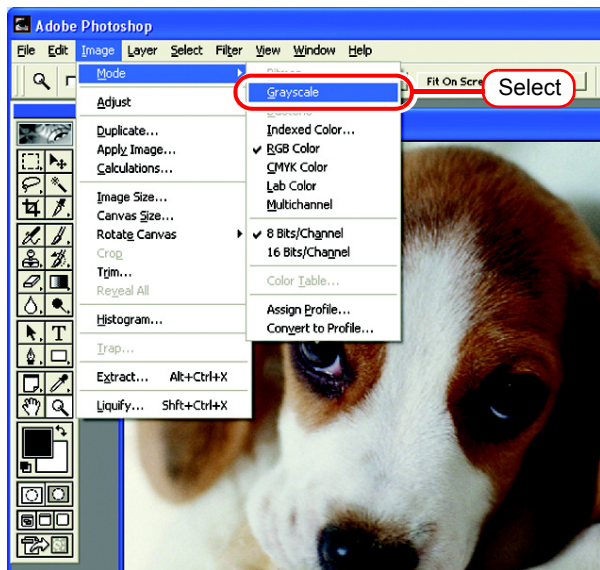
Processing method for Photoshop

This section explains the methods to process the image to a gray-scale image by using Photoshop 6.

- 1 Open the image to be edited by using Photoshop.

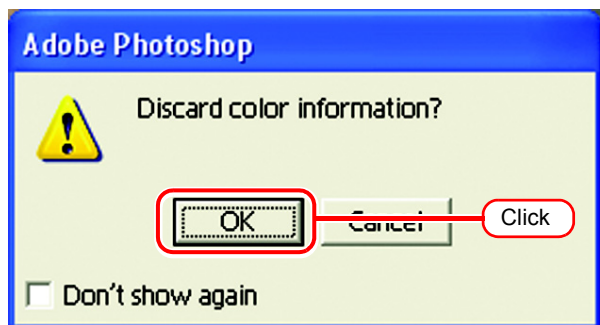


- 2 Select [Image] - [Mode] - [Grayscale] from the menu.

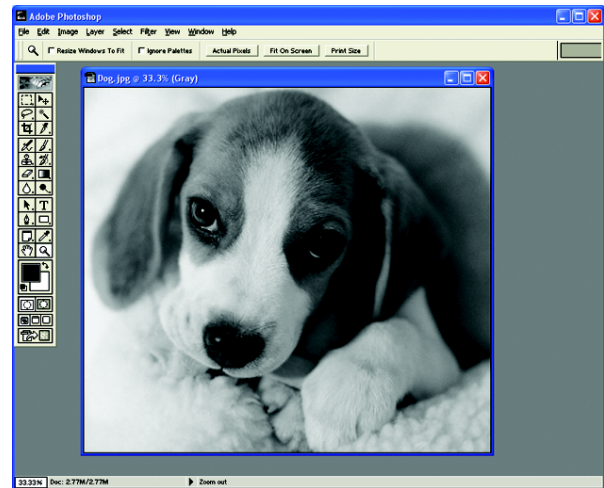


- 3 Shown the “Discard color information?” message box.

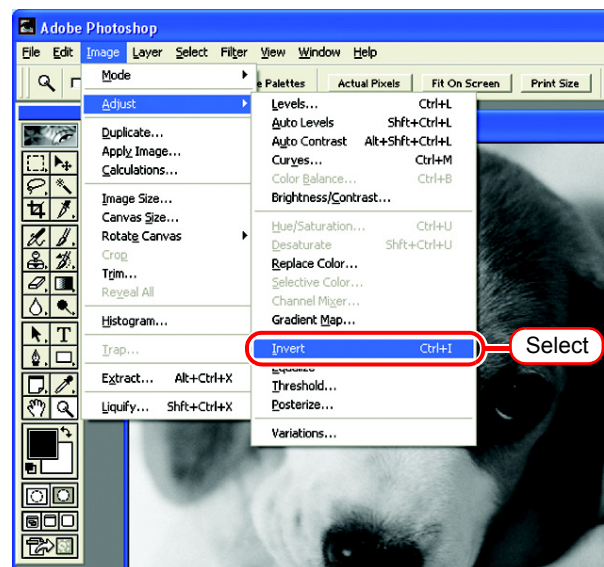
Click .



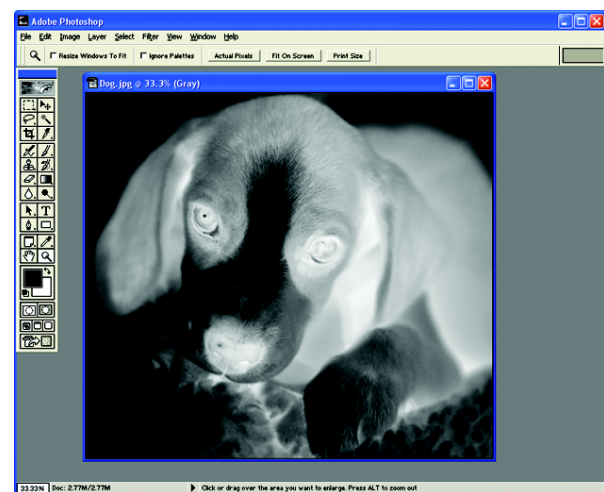
- 4 The image is converted into a gray-scale image.



- 5 Invert the colors of the image.
Select [Image] - [Adjust] - [Invert] from the menu.



- 6 The colors are inverted.
Save the image.

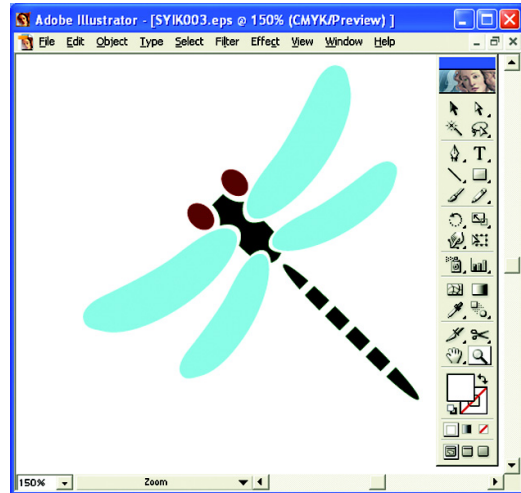


Processing method for Illustrator

This section explains the methods to process the image to a gray-scale image by using Illustrator 10. There are two methods for processing to a gray-scale image by using Illustrator:

Common operations

- 1 Open the image to be edited by using Illustrator.

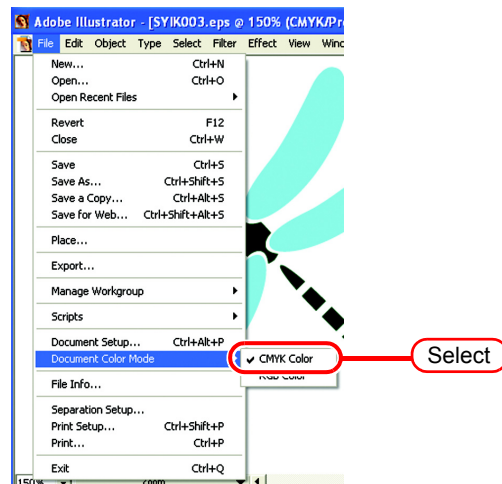


- 2 When the color mode of the image is "RGB," convert it into "CMYK".

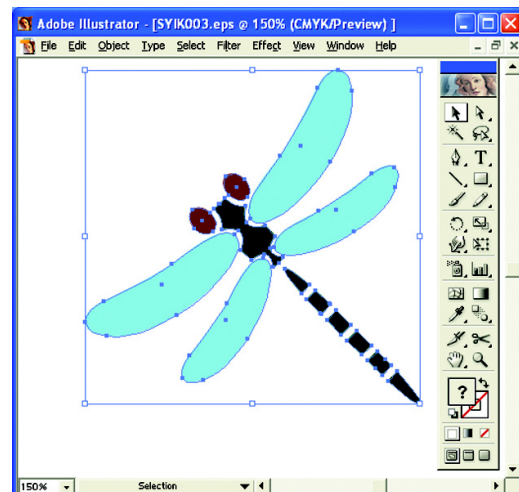
NOTE!

The color mode of the image is displayed as (RGB) or (CMYK) on the title bar.

Select [File] - [Document Color Mode] - [CMYK Color] from the menu.

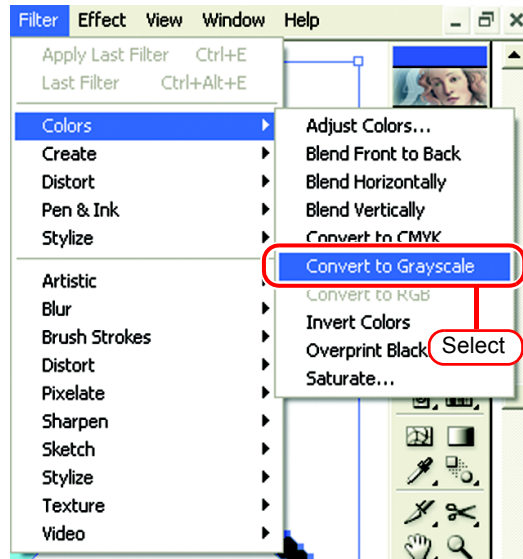


- 3 Select all objects.

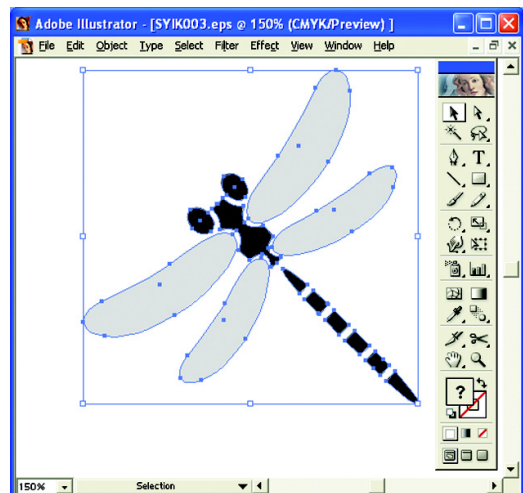


A. Converting to gray-scale image with vector objects left as is

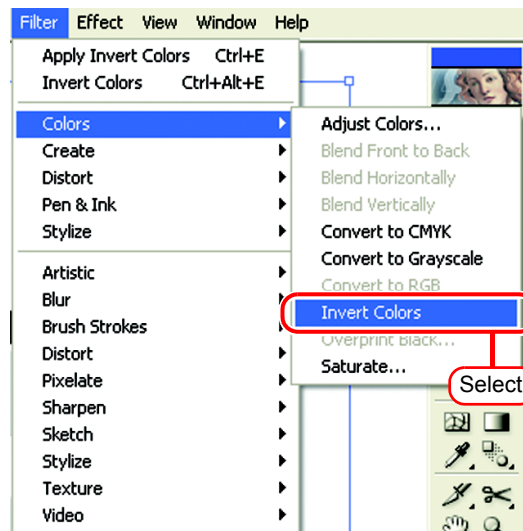
- 1 Select [Filter] - [Colors] - [Convert to Grayscale] from the menu.



- 2 The image is converted into a gray-scale image.



- 3 Invert the colors of the image.
Select [Filter] - [Colors] - [Invert Colors] from the menu.

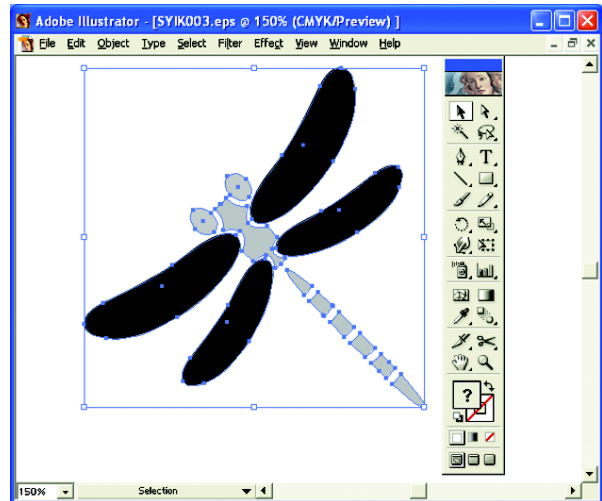


4 The colors are inverted.

NOTE!

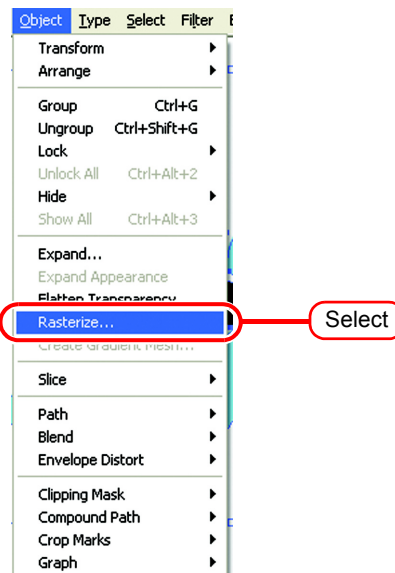
If an object is complicated, part of colors may sometimes be converted into a color other than gray. In this case, rasterize it to process it to a gray-scale object (explained in the next chapter), or select only the object, and then execute [Convert to Grayscale] again.

Save the image.



B. Processing to gray-scale image by rasterizing

- 1 Select [Object] - [Rasterize...] from the menu.

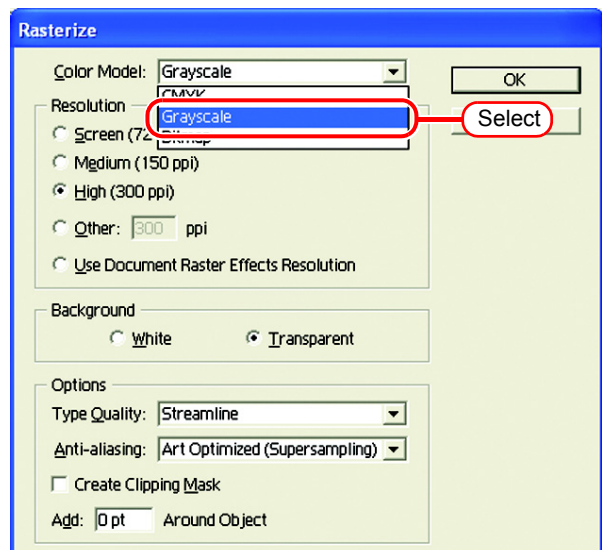


- 2 The "Rasterize" dialog box is displayed.

Select "Grayscale" from "Color Model".

NOTE!

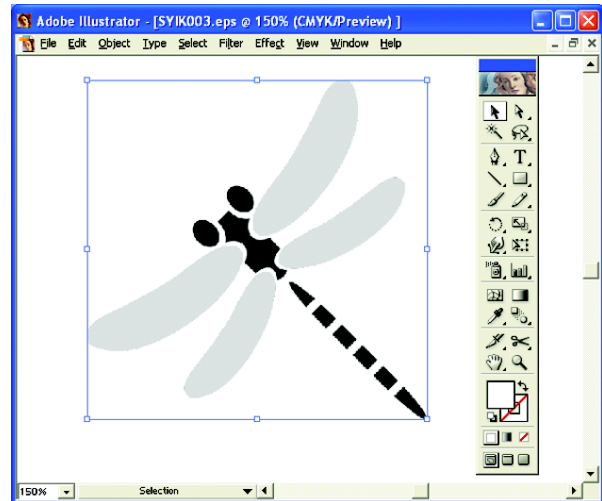
When the "Background" is set to "White", the background color becomes black by inverting the colors. When the "Background" is set to "Transparent", the background color remains white.



- The image is converted into a gray-scale image.

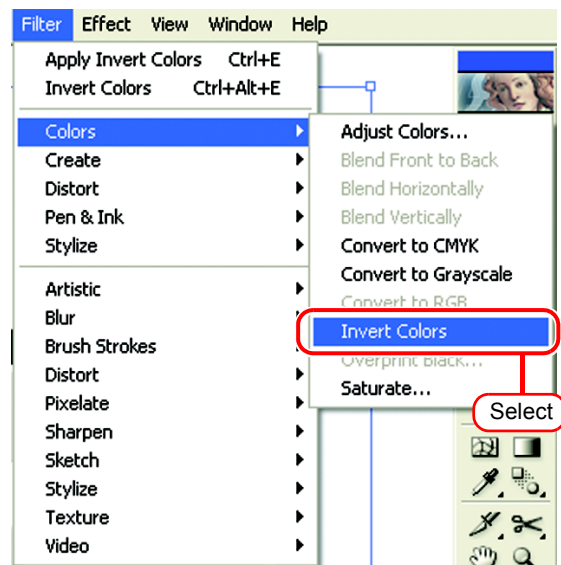
NOTE!

At this point, all objects are integrated into a single raster object.



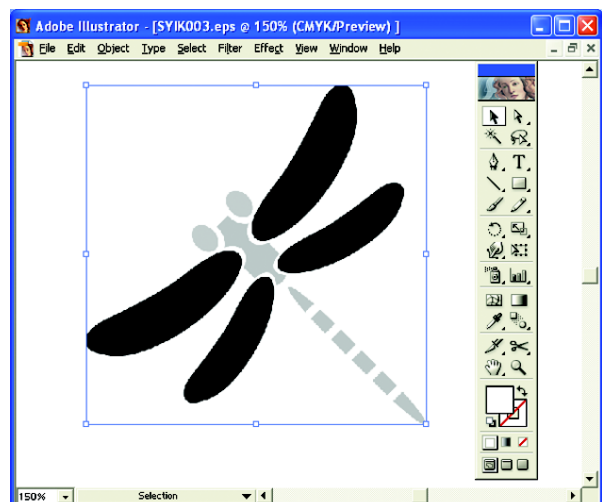
- Invert the colors of the image.

Select [Filter] - [Colors] - [Invert Colors] from the menu.



- The colors are inverted.

Save the image.



Raster Link Pro II settings

This section explains the Raster Link Pro II settings.

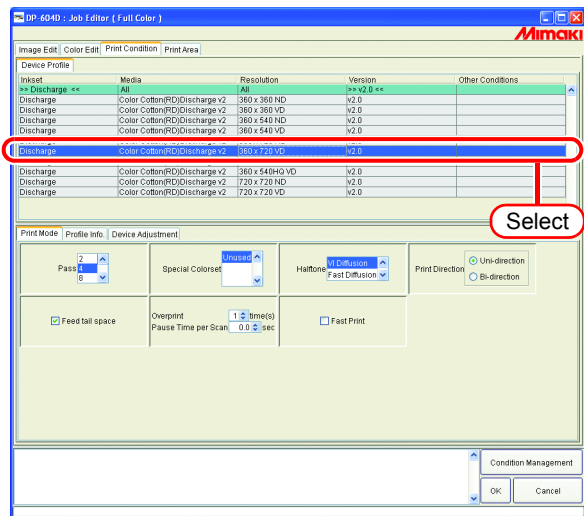
Changing Printing Conditions

When using only the discharge liquid, set the Printing Condition, as listed below. For details of the Printing Condition settings, see the Reference Guide.

- 1 Select a job for discharging, and then open the Job Editor.

- 2 Open [Print Condition] of the Job Editor.

Select the “Discharge” profile.



Printing simultaneously with color image

Raster Link Pro II settings

This section explains the Raster Link Pro II settings.

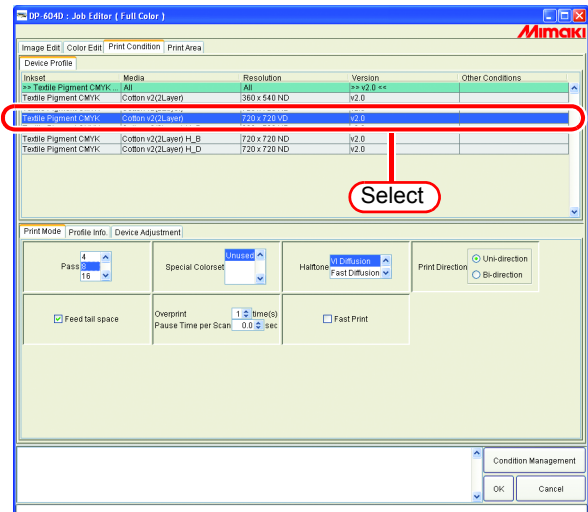
Job settings

The settings for printing the discharge liquid simultaneously with the color image are as follows.

- 1 Select a discharging job, and then open the Job Editor.

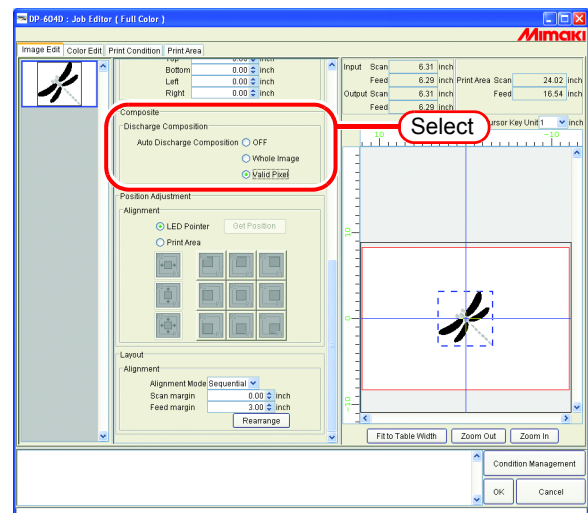
- 2 Open the [Print Condition] menu of the Job Editor.

Select the “Textile Pigment CMYK” profile.



- 3 Open the [Image Edit] menu.
- Specify the discharge liquid printing method by “Discharge Composition”.

NOTE! When “Discharge Composition” is not selectable, profile for “Discharge” is selected in the Inkset of [Print Condition]. Select the profile for “Textile Pigment CMYK”.

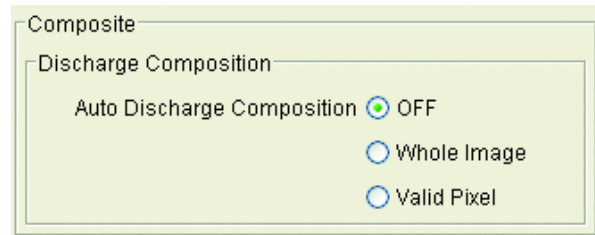


Auto Discharge Composition

OFF : The discharge liquid is not-printed.

Whole Image : The discharge liquid is printed over the entire image (area enclosed by dotted square in the preview).

Valid Pixel : The discharge liquid is printed only to the portions having a color in the image.





D201560-1.00-16062006

Printed in Japan

© 2006 MIMAKI ENGINEERING CO., LTD. Allright reserved.

EA

IT