

Mimaki



RasterLink Pro II

Software RIP

Raster Link Pro II

**Scanner for color
acquisition
with Raster Link Pro II**

This manual explains how to use the scanner for use with the color acquisition function.

MIMAKI ENGINEERING CO., LTD.

TKB Gotenyama Building, Kitashinagawa, Shinagawa-ku, Tokyo 141-0001, Japan

Phone: +81-3-5420-8671 Fax: +81-3-5420-8687

URL: <http://www.mimaki.co.jp/>

E-mail: trading@mimaki.co.jp

Version 1.00

D201559

Table of Contents

The color acquisition function and supported scanners	3
Supported scanners.....	3
Scanner driver settings	4
With the EPSON Perfection 4990 Photo	4

The color acquisition function and supported scanners

In Raster Link Pro II, it is possible to simulate and print original color that is scanned from document such as comprehensive layouts (color acquisition function).

This document explains the items to set in the scanner driver when using the color acquisition function. According to your scanner model, follow the scanner driver setup procedure on this manual.

Supported scanners

The following scanners are supported with the Raster Link Pro II color acquisition function.

EPSON Perfection 4990 Photo

NOTE!

- Refer to the manual packaged with the scanner for how to operate the scanner and scanner driver.
- When using color acquisition function of Raster Link Pro II, use the setting value described in this manual.
It has an influence on the accuracy of the acquired color.
- When using a scanner for functions other than color acquisition function of Raster Link Pro II, the default setting value of the scanner driver is changed. When using a scanner for color acquisition function of Raster Link Pro II, check the setting value.

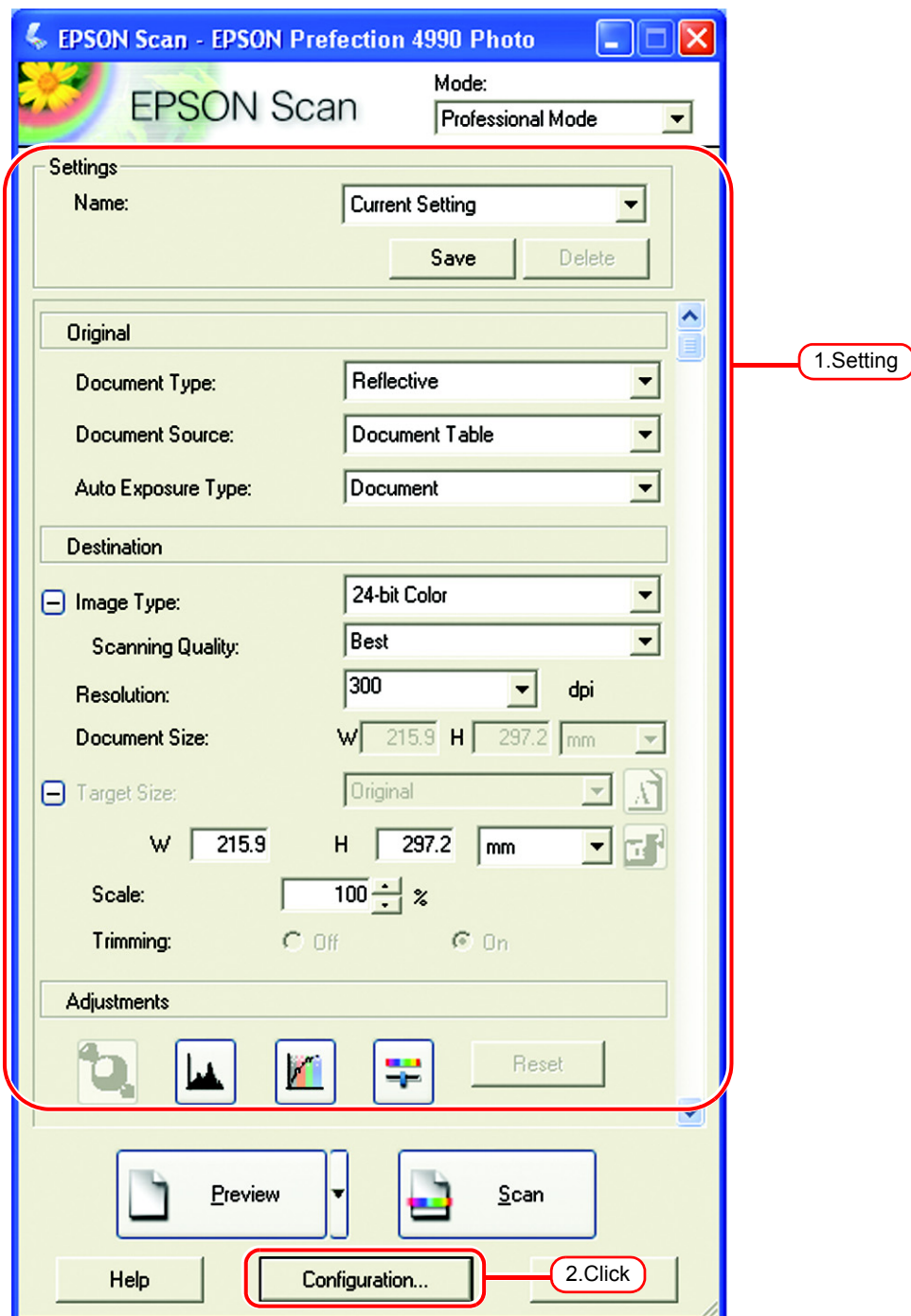
Scanner driver settings

In the Raster Link Pro II color acquisition function, select the type of scanner, and click **Start Scanning**. The scanner driver screen appears.

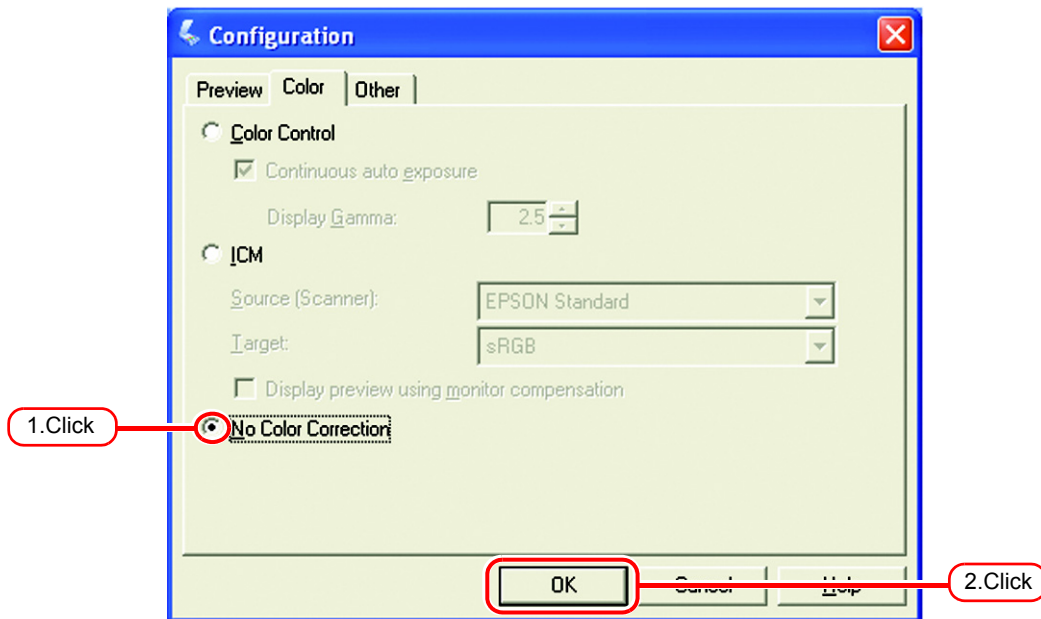
Scan the original document with the settings explained below.

With the EPSON Perfection 4990 Photo

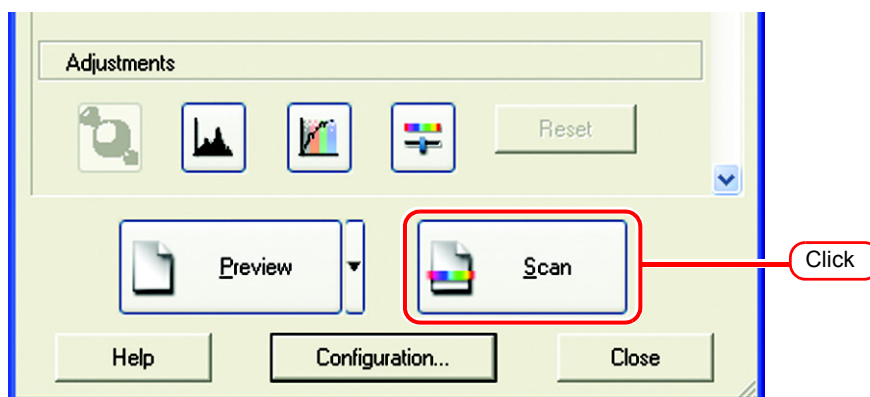
- 1 Soon after the scanner starts, the scanner driver screen appears. Make the following settings and click **Configuration...**.



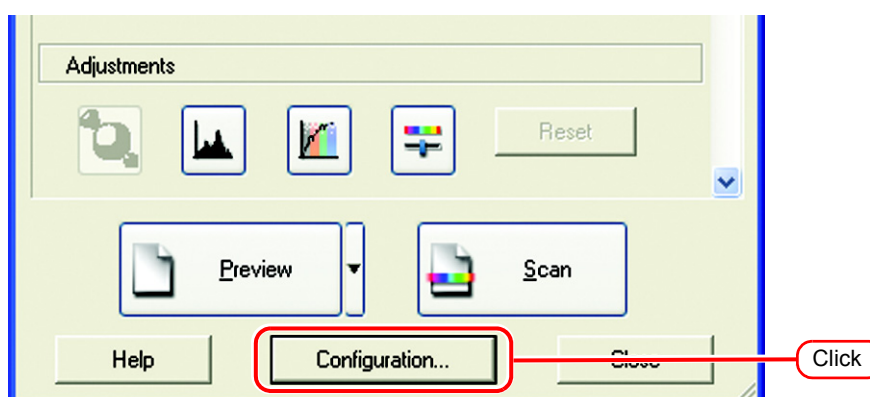
- 2 On the [Configuration] screen, select [No Color Correction] in the [Color] menu, and click .



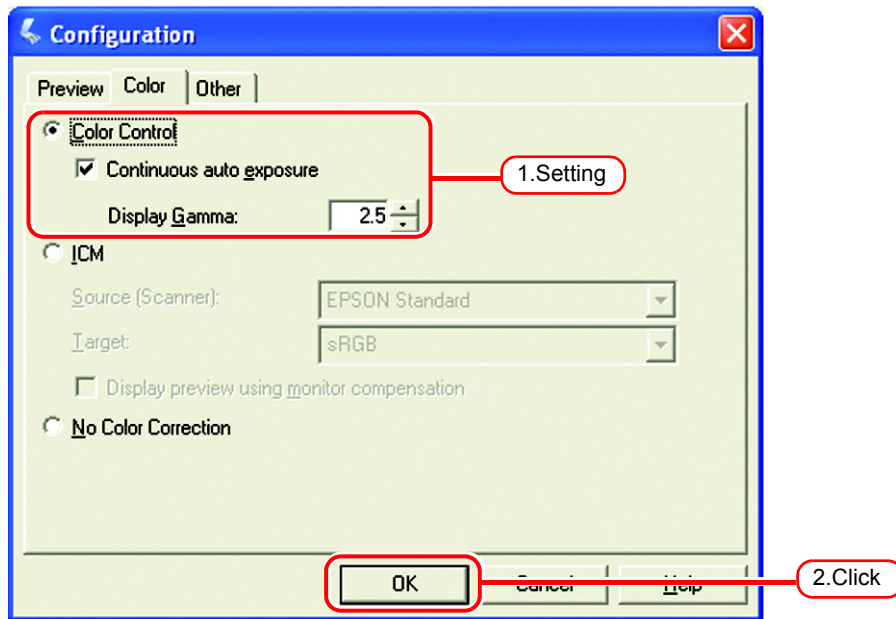
- 3 Click .
The image is scanned



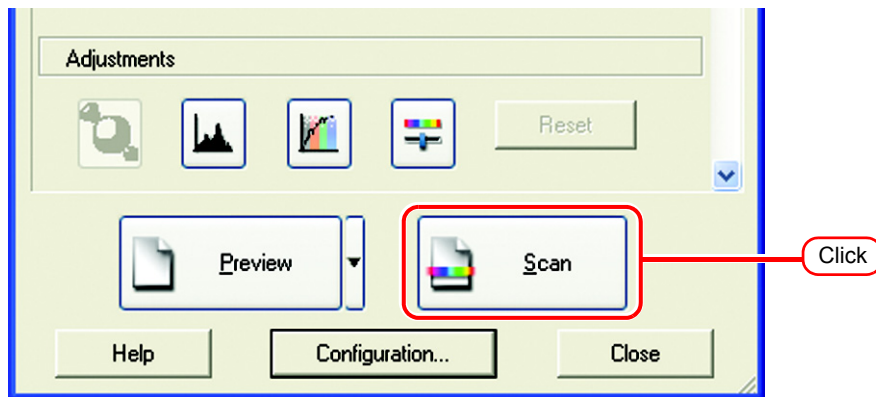
- 4 When the image is scanned, the scanner driver screen appears again. Click without changing the settings.



- 5 On the [Configuration] screen, make the following settings in the [Color] menu, and click .



- 6 Click .
The image is scanned again.



This completes the scanning operation.

Referring to the Raster Link Pro II “Reference Guide for special settings to each printer”, carry out the procedure for the color acquisition function.



D201559-1.00-16062006

Printed in Japan

© 2006 MIMAKI ENGINEERING CO., LTD. Allright reserved.

EA

IT