
RasterLink *ProIII*

RasterLink *IPIII*

RasterLink *TAIII*

Software RIP

Raster Link Pro III

Color Collection Reference Guide

Describes how to use the Raster Link Pro III series
color collection function to print specific colors.

MIMAKI ENGINEERING CO., LTD.

TKB Gotenyama Building, Kitashinagawa, Shinagawa-ku, Tokyo 141-0001, Japan

Phone: +81-3-5420-8671 Fax: +81-3-5420-8687

URL: <http://www.mimaki.co.jp/>

E-mail: trading@mimaki.jp

Version 1.0

D201810-10

Notices

- Duplicating or copying all or part of this document is strictly prohibited.
- The contents of this document are subject to change without notice.
- Please note that the information contained in this document may differ from the actual specifications as a result of improvements or other changes to the software.
- Copying this software to another disk (except for the purposes of creating a backup) or loading the software into memory for reasons other than to run the software is strictly forbidden.
- Except where stated in the terms of the warranty, Mimaki Engineering Co. Ltd. shall bear absolutely no responsibility for any damages arising from the use or inability to use this product (including but not limited to lost earnings, indirect damages, special damages, or other monetary losses). Furthermore, this condition shall apply even if Mimaki Engineering Co. Ltd. had become aware of the possibility of damages. As an example, Mimaki Engineering Co. Ltd. shall not be held liable for loss of media (works) resulting from the use of this product or from any indirect losses arising from items created using this media.

About this Manual

This manual describes how to create data and how to configure the Raster Link Pro III using the Raster Link Pro III color collection function to print specific colors approximating a specified spot color.

Notation

Menu items are indicated by quotation marks, such as "Full Color".

Dialog box buttons are indicated by a frame () , such as .

This manual is based on Raster Link Pro III. Please replace software and printer names used in this manual with those of the software and printer you are using.

Symbols



Describes items to be aware of when performing an operation.



Describes information that is useful to know.



Gives the page numbers with related information.

Adobe, the Adobe logo, Photoshop, Illustrator, and PostScript are trademarks of Adobe Systems Incorporated.

The color collection described in this manual is based on DIC Color Guide data. DIC and DIC Color Guide are registered trademarks of Dainippon Ink and Chemicals, Incorporated.

All other company names and product names contained in this manual are trademarks or registered trademarks of their respective companies.

Table of Contents

Notices.....	2
About this Manual.....	2
Printing by Approximating DIC Color Guide.....	4
Create spot color data in Adobe Illustrator	5
Configuring the Raster Link ProIII.....	7
Printing by Approximating PANTONE Color Chips	10
Create spot color data in Adobe Illustrator	11
Configuring the Raster Link IPIII.....	13
PANTONE Color Collection.....	16

Printing by Approximating DIC Color Guide

This chapter describes how to create data in Adobe Illustrator and how to configure the Raster Link ProIII for the situation where you are printing using the Raster Link ProIII approximating the DIC color guide.

Configuration Procedure

1. Create spot color data in Illustrator

In Adobe Illustrator, create data by specifying DIC color guide in the swatch library



2. Configure the Raster Link ProIII

Configure the Raster Link ProIII to perform color replacement on the DIC color guide spot color created using Adobe Illustrator

Create spot color data in Adobe Illustrator

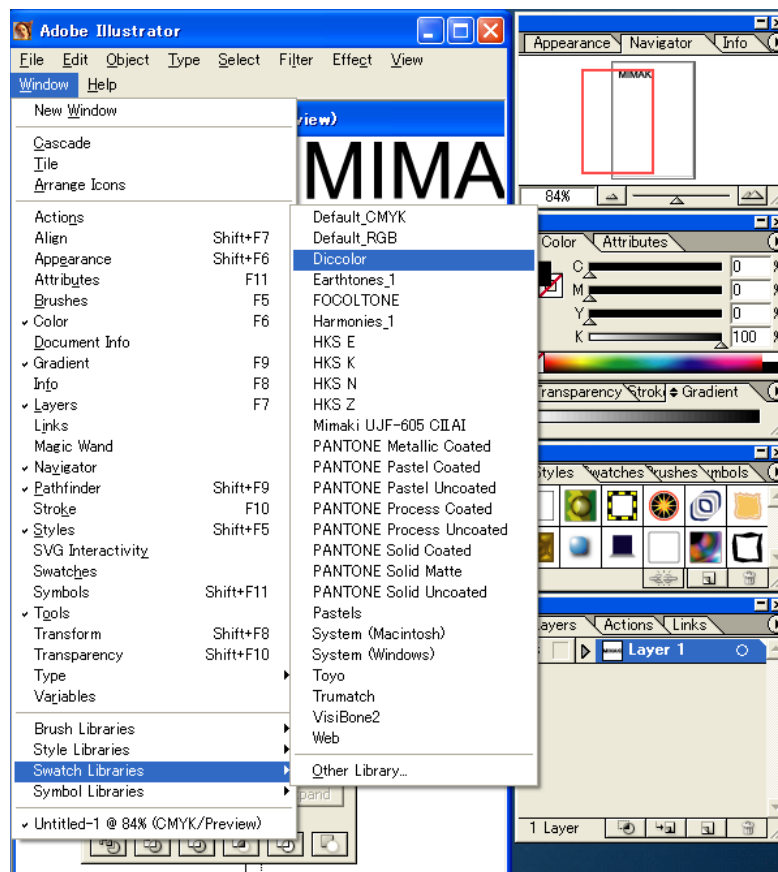
NOTE!

Although this manual describes the procedure for Adobe Illustrator 10, the configuration method is the same as Illustrator 8, 9, CS, CS2, and CS3.

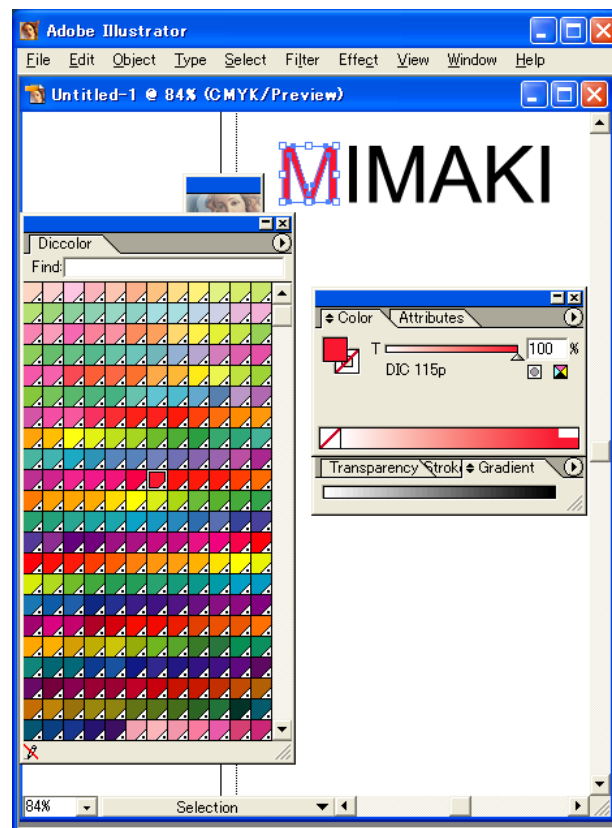
- 1 Open the data that specifies the spot color in Adobe Illustrator.
Select [Window] - [Swatch Libraries] - [Diccolor] from the menu to display a list of the DIC color guide swatch library.



- For Adobe Illustrator CS2, select [Window] - [Swatch Libraries] - [Diccolor Guide] from the menu.
- For Adobe Illustrator CS3, select [Window] - [Swatch Libraries] - [Color Books] - [Diccolor Guide] from the menu.



- 2 Select the artwork you want to set to the DIC color, and select any color from the DIC color guide swatch library list.

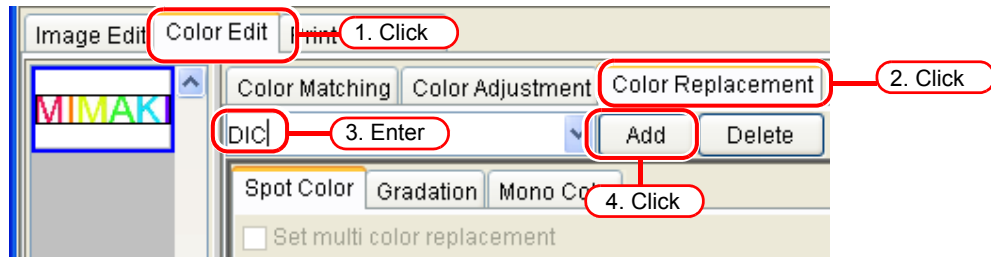


- 3 Save the data as printer driver output or as EPS, then copy the data to the hot folder.


Configuring the Raster Link ProIII

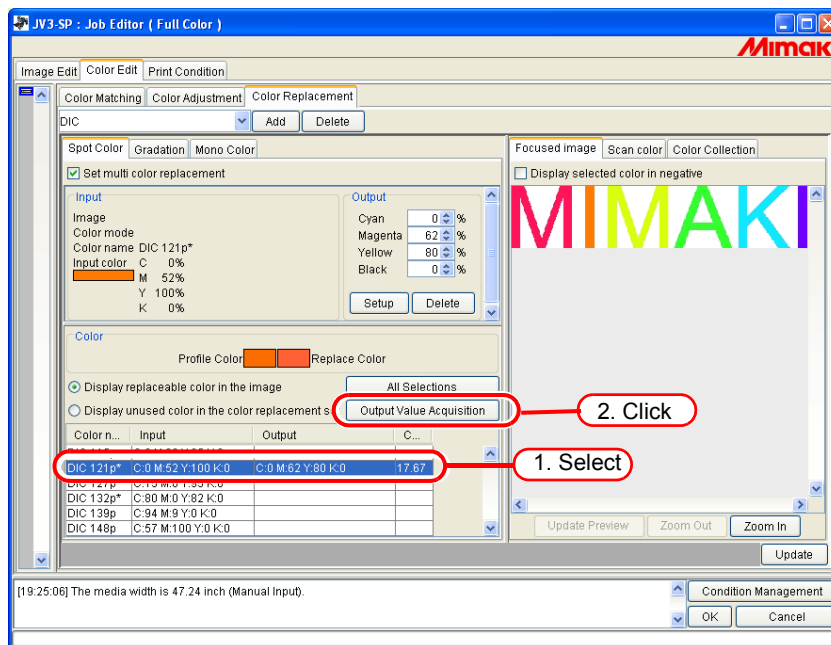
Use the Raster Link ProIII to perform color replacement and print a data created in Adobe Illustrator that specifies a DIC color guide spot color.


- 1 Spool the data to the Raster Link ProIII and open Job Editor.
- 2 Open the "Color Replacement" tab in the "Color Edit" tab and create a color replacement set.

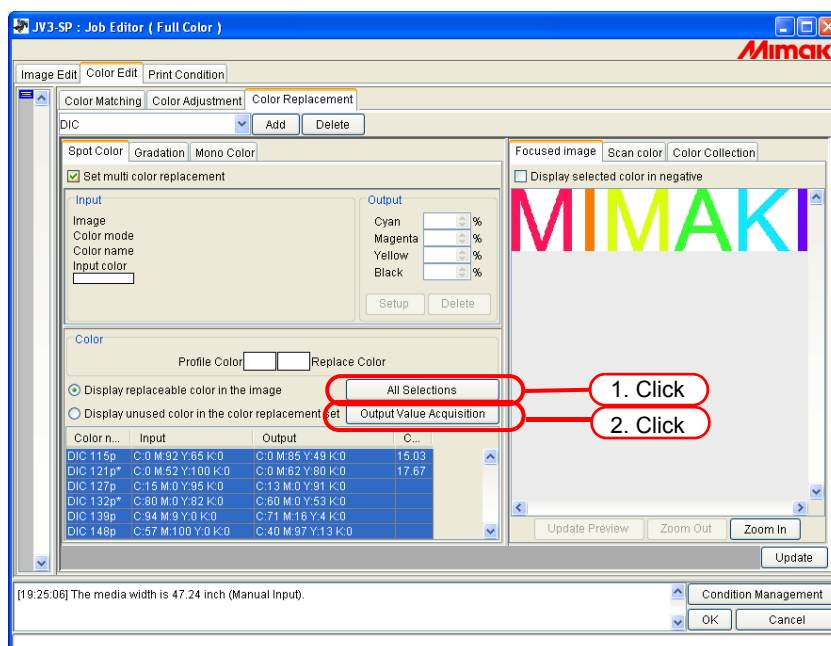


3 Specify the color replacement information.

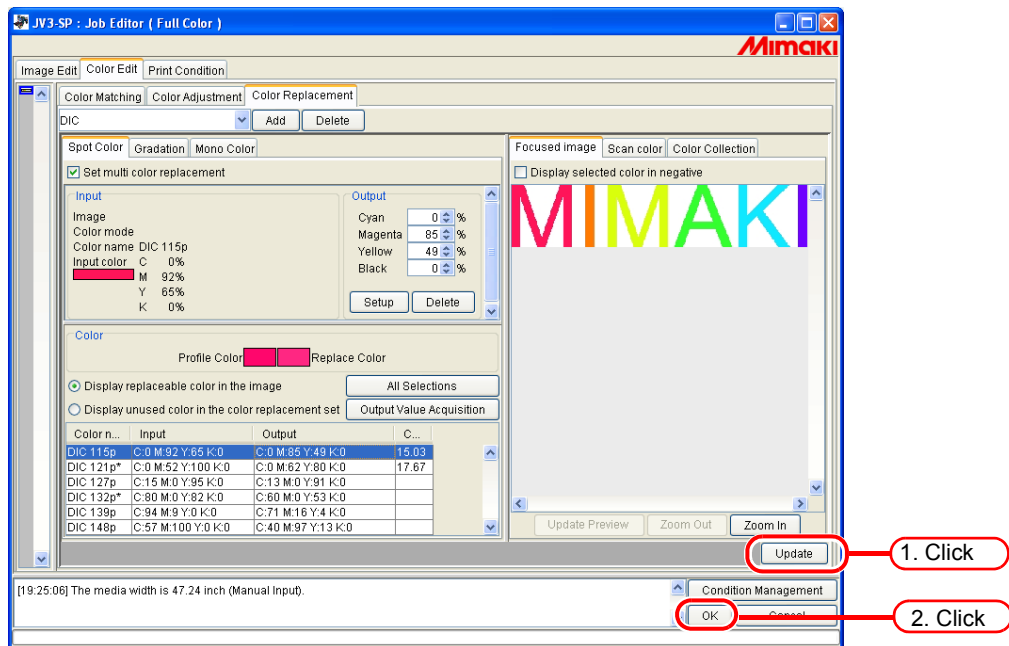
- To perform color replacement on a selected color name
( Reference guide for each series "Obtain ink information from color collection 2")
Select the color name for color replacement, and click the **Output Value Acquisition** button.



- To perform color replacement on all color names
( Reference guide for each series "Obtain ink information from color collection 2")
Click the **All Selections** button and then click the **Output Value Acquisition** button.



4 Click the **Update** and **OK** buttons to save the job settings.

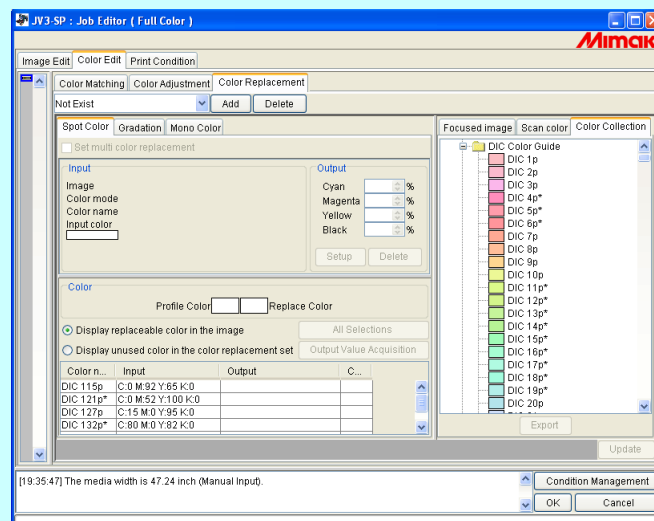


5 Execute the printing.



The Raster Link ProIII has 4 color collections that support the Adobe Illustrator DIC color guide. You can check the details of the color collections by selecting [Color Edit] - [Color Replacement] - [Color Collection].

Adobe Illustrator version	DIC Color Guide name	Color Collection name
8 - CS	DIC Color Guide	DIC 1p - DIC 654p*
	DIC Color Guide PART2	DIC 2001p - DIC 2638p
CS2 - CS3	DIC Color Guide CS2	DIC 1s - DIC 654s*
	DIC Color Guide PART2 CS2	DIC 2001s - DIC 2638s



Printing by Approximating PANTONE Color Chips

This chapter describes how to create data in Adobe Illustrator and how to configure the Raster Link IPIII for the situation where you are printing using the Raster Link IPIII to approximate PANTONE color chips.

NOTE!

The product that supports the PANTONE color chip is the Raster Link IPIII. The color collections of the Raster Link ProIII and Raster Link TAIII do not support PANTONE colors. Furthermore, even when you are using the Raster Link IPIII, the color collection that supports the PANTONE color chips can only be used if the following conditions are satisfied.

- The UJF-605CII model has been registered and is being used in the printer administration function
- If the "UJF605CIIUV_PET_F101171.cot" profile is selected (1200x1200ND CMYKLcLm UV PET 1 layer bidirectional 16-pass high-speed printing ON Version 2.0)

Configuration Procedure

1. Create spot color data in Adobe Illustrator

In Adobe Illustrator, create data by specifying PANTONE color chips in the swatch library



2. Configure the Raster Link IPIII

Configure the Raster Link IPIII to perform color replacement on the PANTONE spot color created using Adobe Illustrator

Create spot color data in Adobe Illustrator

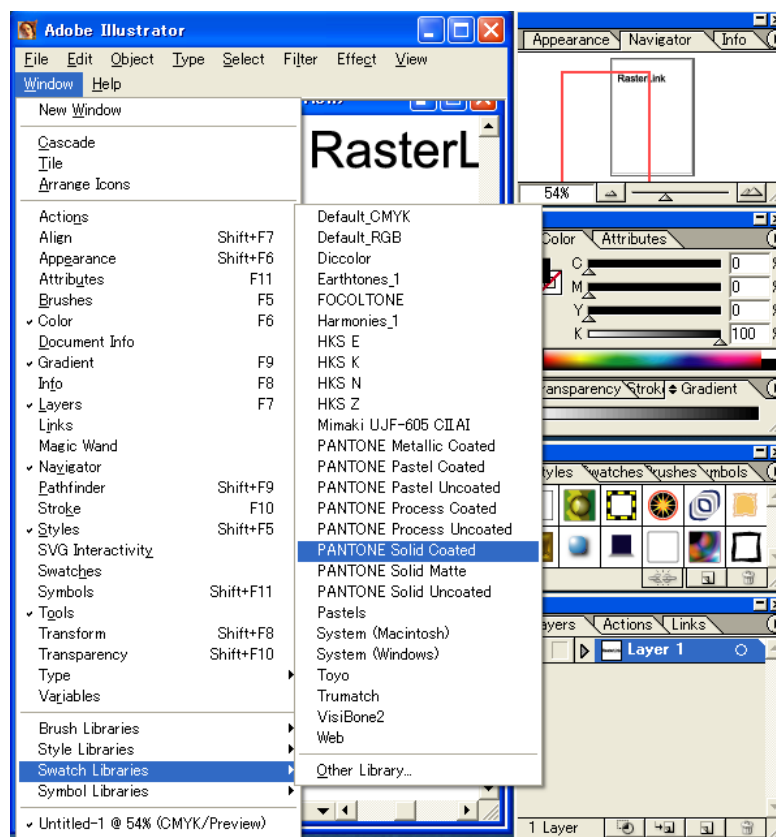
NOTE!

Although this manual describes the procedure for Adobe Illustrator 10, the configuration method is the same as Illustrator 8, 9, CS, CS2, and CS3.

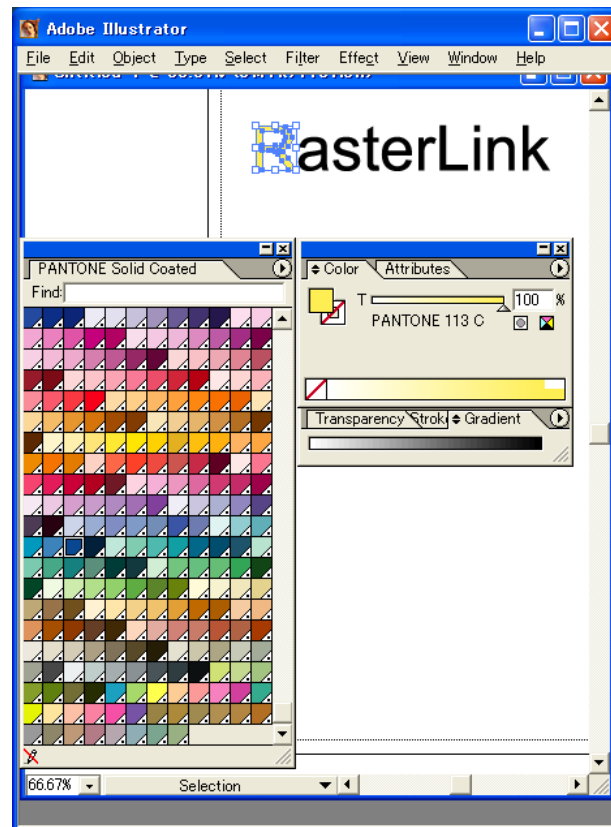
- 1 Open the data that specifies the spot color in Adobe Illustrator.
Select [Window] - [Swatch Libraries] - [PANTONE Solid Coated] from the menu to display a list of the PANTONE color chip swatch library.



For Adobe Illustrator CS3, select [Window] - [Swatch Libraries] - [Color Books] - [PANTONE Solid Coated] from the menu.



- 2 Select the artwork you want to set to the PANTONE color chip, and select any color from the PANTONE color chip swatch library list.

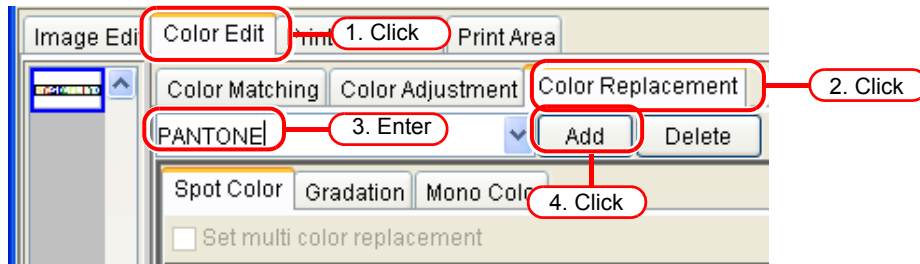


- 3 Save the data as printer driver output or as EPS, then copy the data to the hot folder.

Configuring the Raster Link IPIII

Use the Raster Link IPIII to perform color replacement and print a data created in Adobe Illustrator that specifies a PANTONE color ship spot color.

- 1** Spool the image to the Raster Link IPIII and open the Job Editor.
- 2** Open the "Color Replacement" tab in the "Color Edit" tab and create a color replacement set.



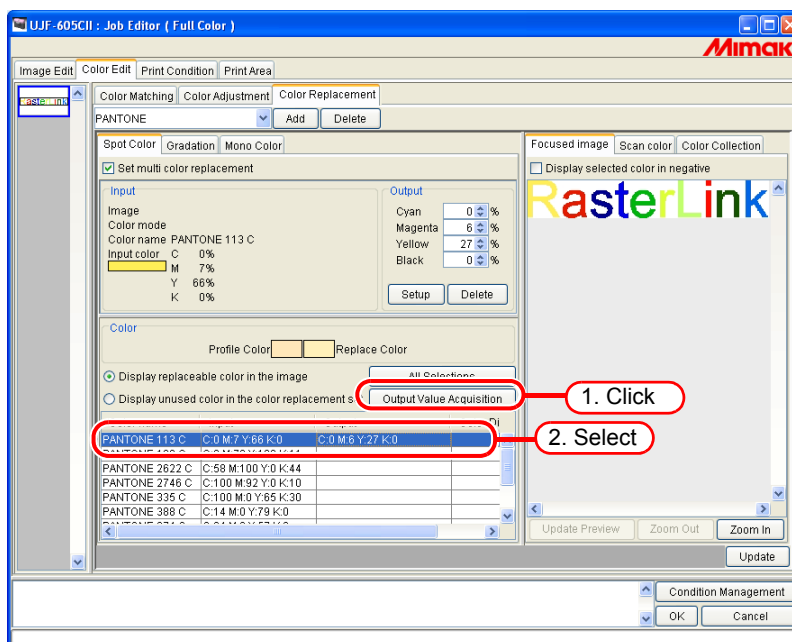
3 Specify the color replacement information.

- To perform color replacement on a selected color name

(🔗 Reference guide for each series "Obtain ink information from color collection 2")

Select the color name for color replacement, and click the

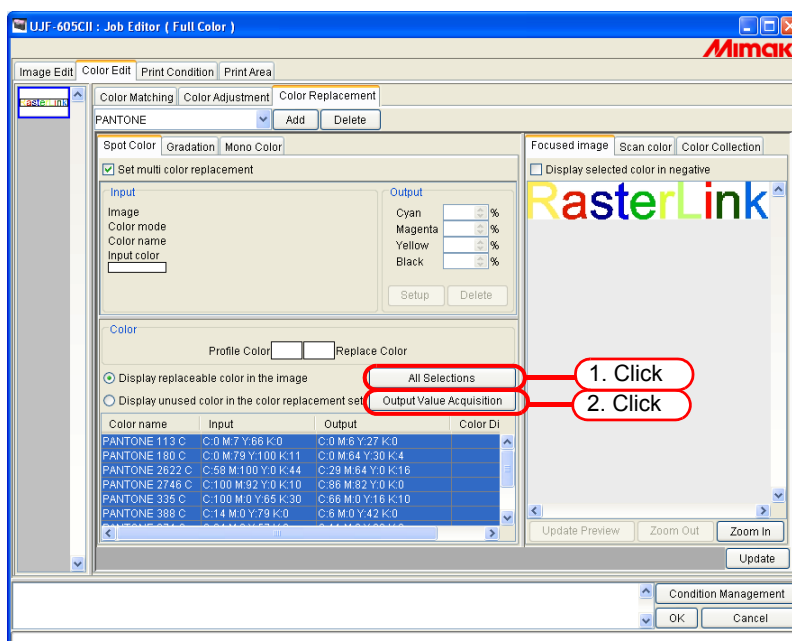
Output Value Acquisition button.



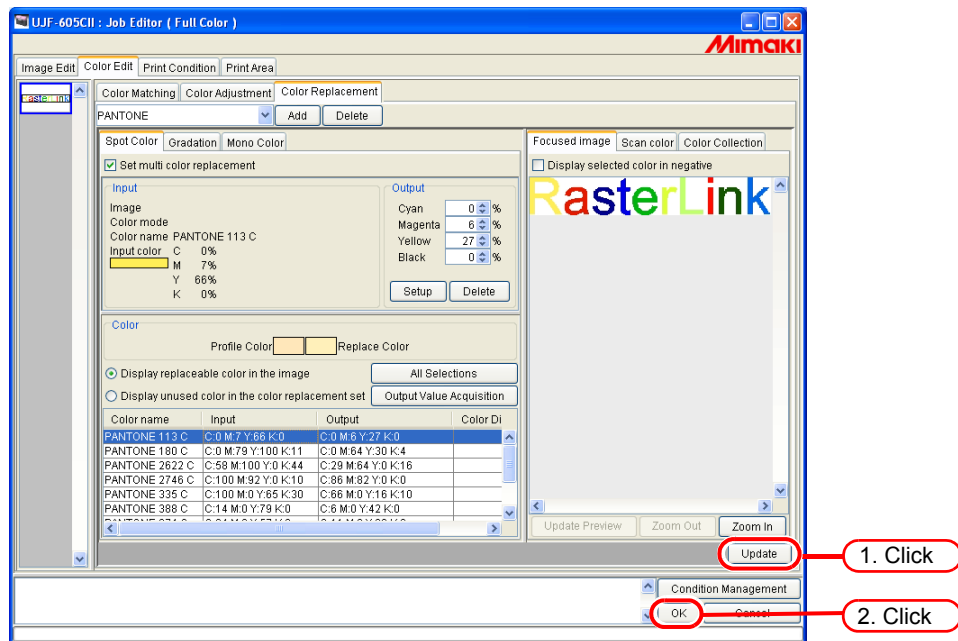
- To perform color replacement on all color names

(🔗 Reference guide for each series "Obtain ink information from color collection 2")

Click the **All Selections** button and then click the **Output Value Acquisition** button.



4 Click the **Update** and **OK** buttons to save the job settings.



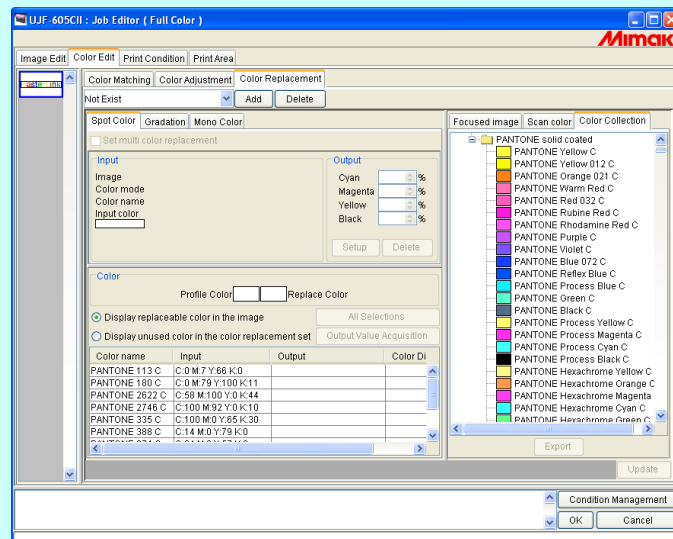
5 Execute the printing.



From among the PANTONE color chips in Adobe Illustrator, the Raster Link IP111 supports "Solid Coated". You can check the details of the color collections by selecting [Color Edit] - [Color Replacement] - [Color Collection].

Color Collection Names

PANTONE solid coated: PANTONE 100 C to PANTONE 8321 C



PANTONE Color Collection

This RIP software carries the PANTONE Color Look-up Table © Pantone, Inc., 2007.

PANTONE® Colors generated may not match PANTONE-identified standards. Consult current PANTONE Publications for accurate color. PANTONE® and other Pantone, Inc. trademarks are the property of Pantone, Inc. © Pantone, Inc., 2007

The PANTONE Color Look-up Table © Pantone, Inc., 2007 is made for Raster Link IPIII and UJF-605CII.

There are many variables in process reproduction of colors generated by the UJF-605CII, any one of which may affect the quality of the PANTONE Color simulation, including:

- type of driver or RIP used
- type of paper used
- type of ink, toner or colorant used
- effective final resolution
- dot structures/halftones/screening
- print engine

For optional result, we recommend that the following color profiles and materials be used:

1. Color profile : UJF-605CII UV PET F101171.cot
2. Displayed media name : UV-PET V2-1(1L-16pUH)
3. Print Condition : 1200x1200 ND, 16pass, uni-direction, Vi-diffusion (8bits rendering)
4. Ink : UV 6 colors (SPC-0371K, SPC-0371C, SPC-0371M, SPC-0371LC, SPC-0371LM, SPC-0404HY)
Back ground white (SPC-0371W-3)
5. Media : PET film (HK-42WF, Higashiyama film Co., Ltd.)



D201810-1.0-19042008

Printed in Japan

© 2008 MIMAKI ENGINEERING CO., LTD. Allright reserved.

EA

IT

SW:1.2