

Thank you for purchasing our inkjet printer Tx300P-1800/Tx300P-1800 MkII.
This "Print Guide" explains the printing method using Tx300P-1800/Tx300P-1800 MkII and the attached software RIP [RasterLink] and items to be checked/set before printing.

Please prepare before use.

Before printing, the preparation for Tx300P-1800/Tx300P-1800 MkII and the software RIP [RasterLink] is required.

About system configuration (Refer to P. 2)

The explanation of the system configuration to print is described.

Prepare Tx300P-1800/Tx300P-1800 MkII (Refer to P. 3)

This section explains how to prepare the printer.

- Connecting a PC installed RasterLink to the printer.
- Adjusting the head height.
- Set the media.
- Test print
- Feed rate correction (Media correction)
- Ink drop position correction (Dot position correction)

Prepare the Mimaki Driver (Refer to P. 4)

Install Mimaki Driver.

Prepare the RasterLink (Refer to P. 4)

The preparation of RasterLink is explained.

The printing method using a sample is explained.

For Tx300P-1800: Prepare any image data, or sample images on the attached CD.
For Tx300P-1800 MkII: Prepare any image data.

Perform printing (Refer to P. 6)

Download the profile suitable for the using condition. (Refer to P. 8)

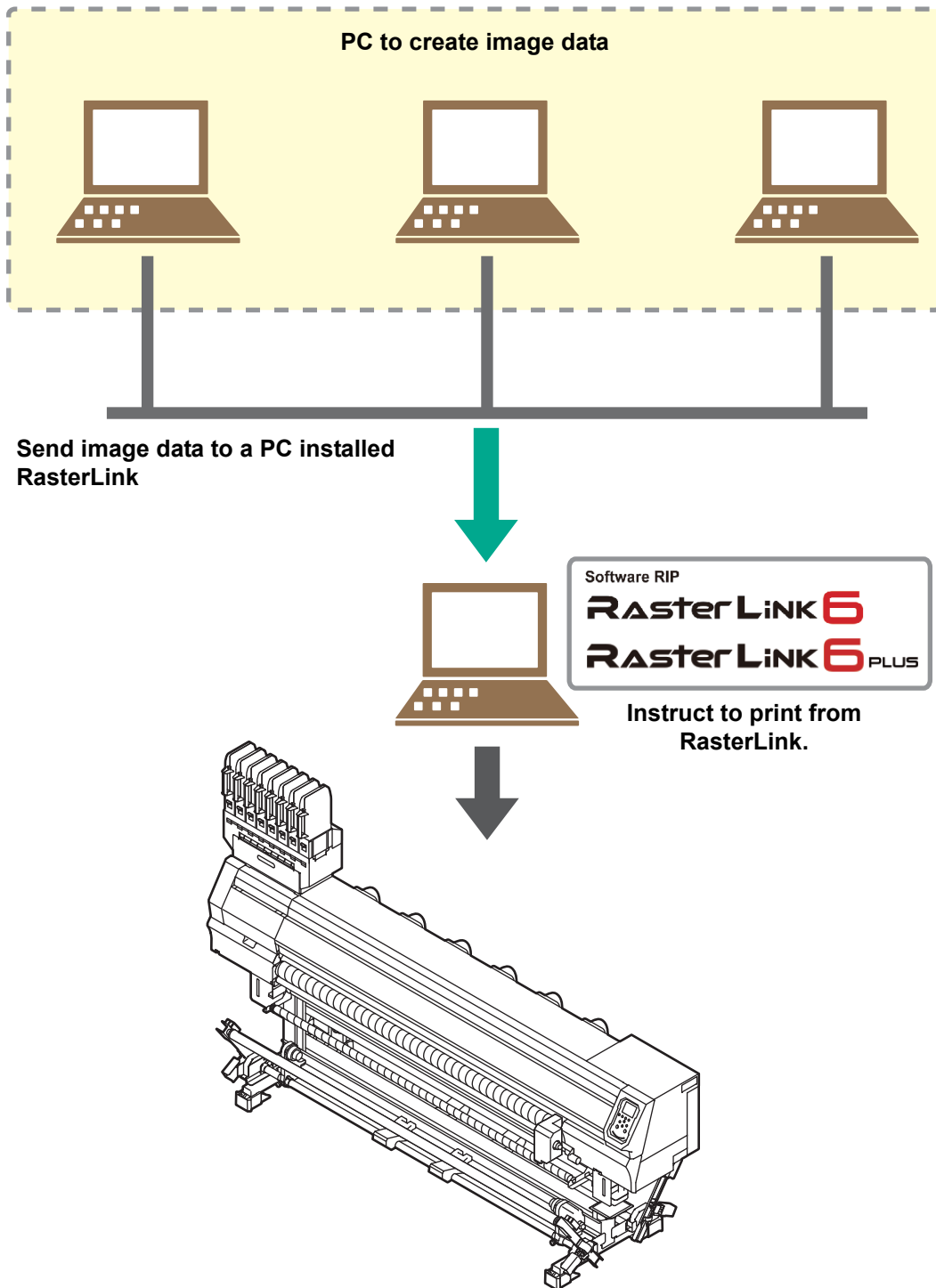
Frequently asked questions.

Typical questions (Refer to P. 10)

Preparation before use

About system configuration

Instruct to print the printing data created with the application such as Illustrator or Photoshop etc. from the PC in which the RasterLink has been installed.



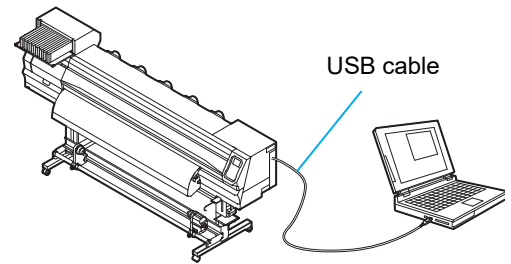
The illustration of the printer is that of Tx300P-1800.

Prepare Tx300P-1800/Tx300P-1800 MkII

Following the procedures below, prepare Tx300P-1800/Tx300P-1800 MkII.

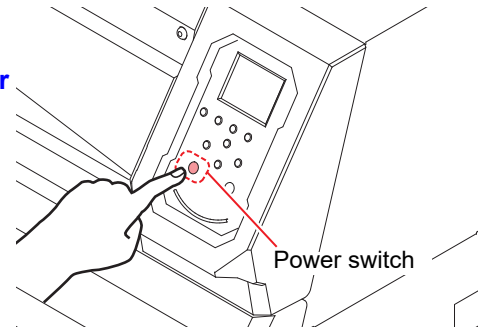
1. Connect the PC installed RasterLink to the printer.

- For details, refer to **“Connecting Cables”** in **Chapter 1 of Tx300P-1800/Tx300P-1800 MkII Operation Manual**.



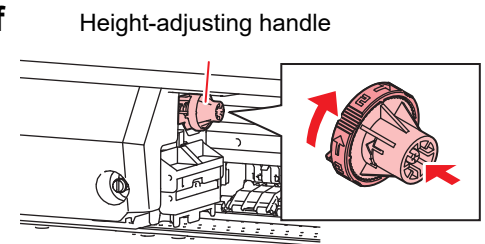
2. Turn on the printer.

- For details, refer to **“Turning the Power ON”** in **Chapter 2 of Tx300P-1800/Tx300P-1800 MkII Operation Manual**.



3. Before setting a media, check the height of print head.

- For details, refer to **“Adjusting the Head Height”** in **Chapter 2 of Tx300P-1800/Tx300P-1800 MkII Operation Manual**.



4. Set the media.

- This machine can use roll media and leaf media.
- For details, refer to **“Set Media”** in **Chapter 2 of Tx300P-1800/Tx300P-1800 MkII Operation Manual**.

5. Perform a test printing.

- Check if discharging defect such as nozzle clogging exists or not.
- For details, refer to **“Test Printing”** in **Chapter 2 of Tx300P-1800/Tx300P-1800 MkII Operation Manual**.

6. Perform a media correction.

- Correct the feeding rate of media.
- For details, refer to **“Setting of Media Correction”** in **Chapter 2 of Tx300P-1800/Tx300P-1800 MkII Operation Manual**.

7. Perform a dot position correction.

- Correct the ink drop position.
- For details, refer to **“If the Positions of Dots Shift...”** in **Chapter 2 of Tx300P-1800/Tx300P-1800 MkII Operation Manual**.

Prepare the Mimaki Driver

1. Check if the Mimaki Driver is installed.

- For the installation, refer to [Installation Guide of the Mimaki Driver](#).



- The Mimaki driver installation guide can be found in the Mimaki driver installer.
- About the name of the installer
- For the included Driver software CD: mkcdmenu.exe
- When downloaded from our website: mkdriver_vxxx.exe
- ("xxx" is the version number)

Prepare the RasterLink

Check that the RasterLink is prepared.

1. Check the installation status of RasterLink.

- If it is installed, the icon on the right is displayed on the PC desktop.
- For details, refer to [Installation Guide of the RasterLink](#).



or



2. Check the connection with the printer.

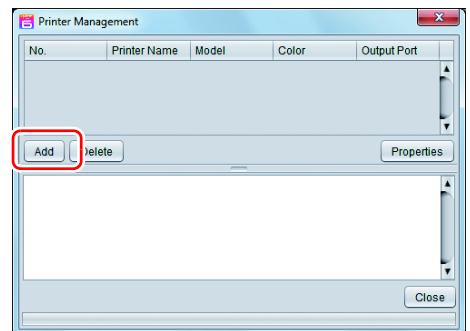
- Make sure the printer is turned on.
- Check that the printer is connected to the PC on which RasterLink is installed.

3. Double-click the icon to start the RasterLink.

- "Printer Management..." is displayed

4. Register the printer.

- If the printer has already been registered, this operation can be skipped. Proceed to Perform printing.
(1) Click [Add] in the [Printer Management...] window.



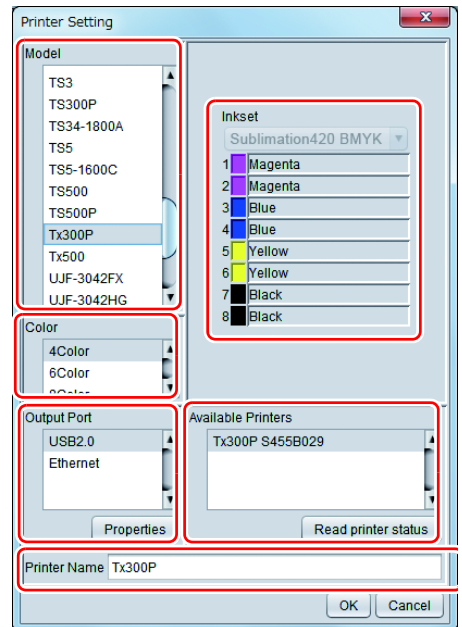
(2) Set the printer information.

● When not using Tx300P hybrid function

- [Model] : Tx300P or Tx300PMkII
- [Color] : Select depending on the device.
- [Output Port] : USB2.0 or Ethernet
- [Available Printers]: Select Tx300P or Tx300PMkII.
- [Printer Name] : Enter the Tx300P or Tx300PMkII.



- The Hot folder of the name entered here is automatically created.
- For an ink set, the information retrieved from the printer is displayed.



● When using Tx300P hybrid function.

When setting Inkset (Sublimation 420 BMYK, Textile Pigment 400 CMYK etc) using the hybrid function, please select "Tx300P-Hybrid" or "Tx300PMkII-Hybrid" as the model name.

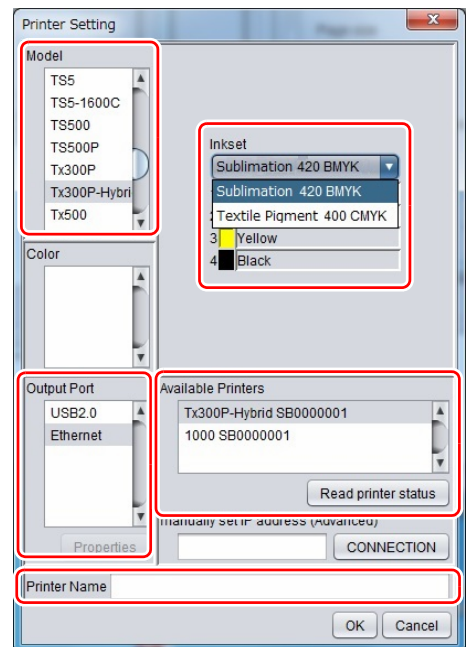
- [Model] : Tx300P-Hybrid or Tx300PMkII-Hybrid
- [Output Port] : USB2.0 or Ethernet
- [Available Printers]: Select Tx300P or Tx300PMkII.
- [Printer Name] : Enter the Tx300P-Hybrid or Tx300PMkII-Hybrid
- [Inkset] : Select according to the ink set to be used



- It is necessary to register the printer for each ink set.



- The Hot folder of the name entered here is automatically created.
- For an ink set, the information retrieved from the printer is displayed.



(3) Click [OK].

- The confirmation screen is displayed.
Clicking [OK] starts the registration of the printer.

Perform printing

Here, an example using the image "sample.eps" is explained.

Important!

- Check P.2 "Preparation before use" without fail before creating a seal/a sticker.

1. Double-click the icon to start the RasterLink.

2. Select [File] - [Open] from the menu.

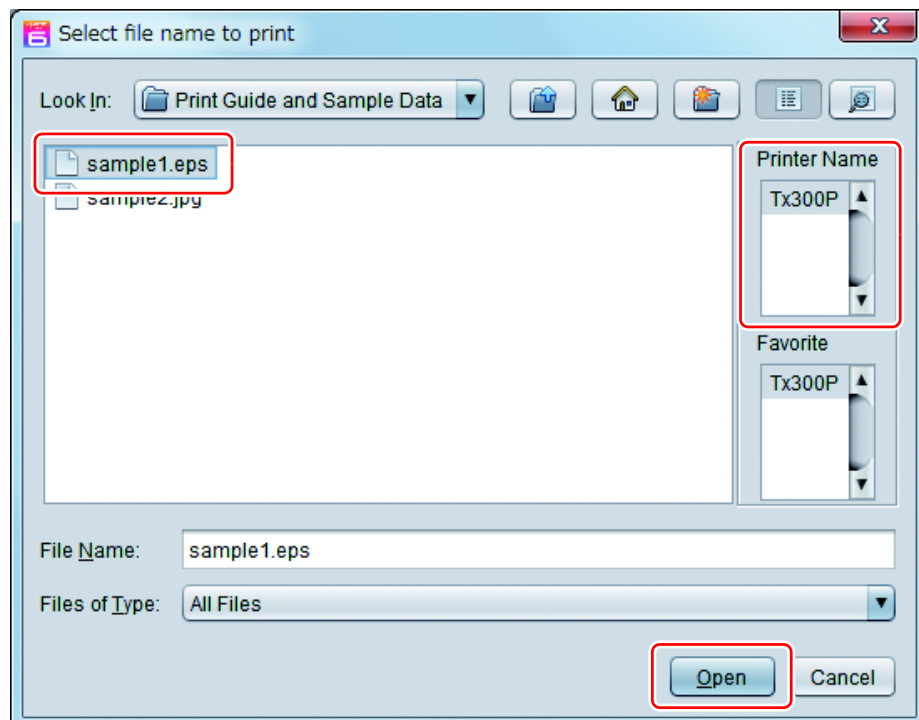
- The "Select file name to print" dialog is displayed.

About sample images

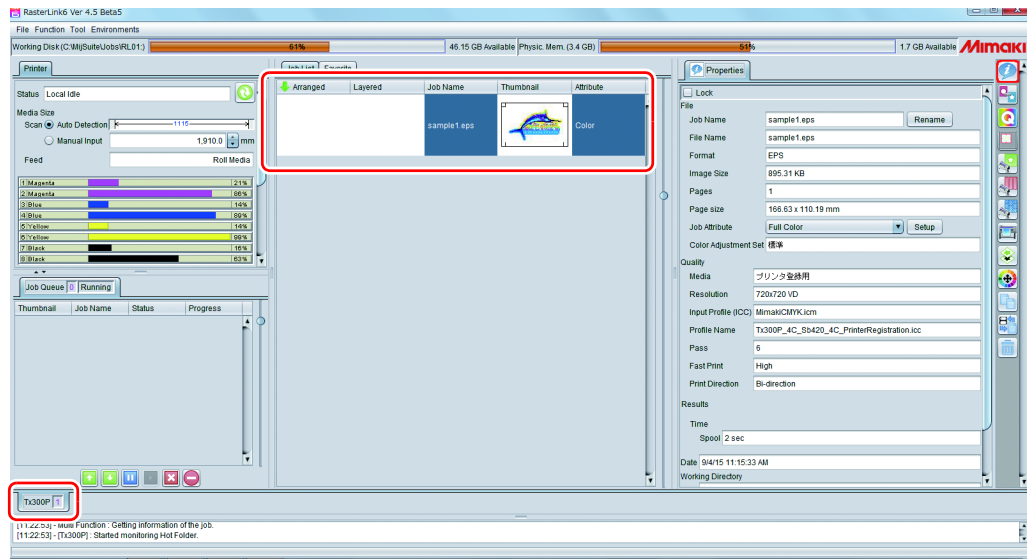
- For Tx300P-1800
Prepare any image data, or use the sample images on the instruction manual CD.
 - (1) Set the CD of Tx300P-1800 Operation Manual into the disk drive.
 - (2) Click [Print Guide / Sample data].
 - The "Print Guide and Sample Data" folder is displayed.
 - (3) Double-click on the folder.
 - Sample data is displayed.
- For Tx300P-1800 MkII
Prepare any image data.

3. Select the file to be printed, and click [Open].

- If more than one printer is registered, select [Tx300P] from [Printer Name].
- For details on the favorites setting, refer to [Reference Guide of the RasterLink](#).
- The file is loaded. The loaded file is displayed on the [Tx300P] tab in the main window.





4. Select the file loaded into the [Tx300P] tab.



5. To check or edit the settings, from the Function icons displayed in the right side of the window, select the icons shown below.

- For details about each function icon, refer to [Reference Guide of the RasterLink](#).

(1) To specify the enlargement, reduction, or copy setting, select  (General Print).


(2) To select a profile that matches the medium or ink set installed in Tx300P, select  (Quality).

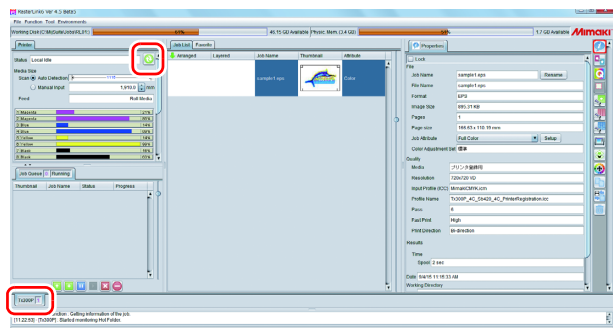
6. select (Execution) from the Function icons displayed in the right side of the window.

- (1) Select [RIP & Print] or [Immediate Print].
- (2) Click [Start].



- If you change the media on the printer, you need to acquire the media width from the printer. Please perform the following steps.

1. In the media window, select the [Tx300P] tab.
2. In the [Printer] section, click  (Display Latest status).



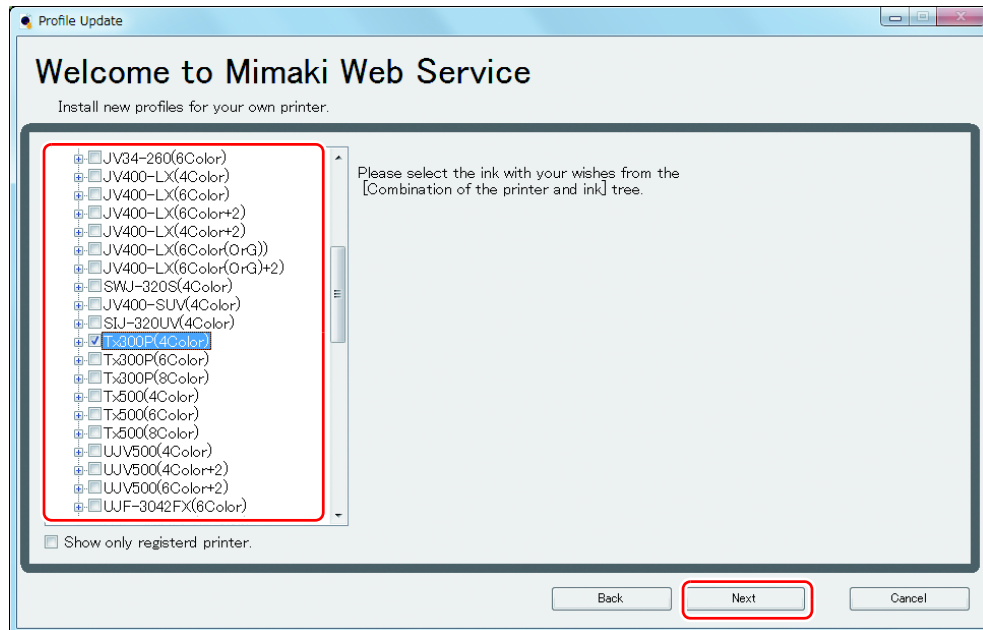
Download the profile suitable for the using condition.

Here, the download method of the profile suitable for the ink set to use is explained.
Read this by replacing the printer/ the profile with the one you use.

1. Start the Profile Update.

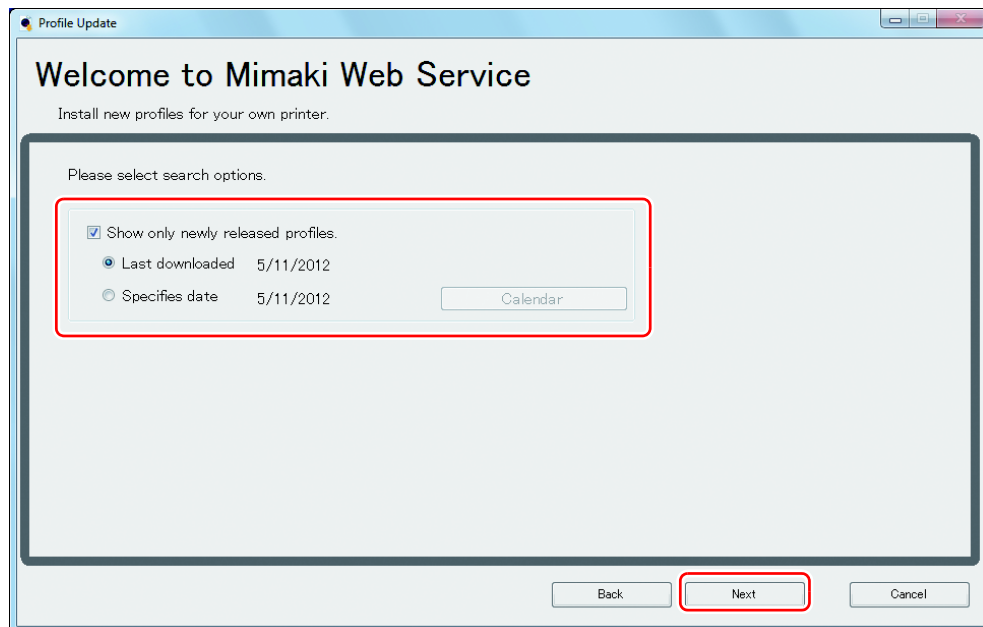
- (1) Select [RasterLink6] - [Update] - [Profile Update] from the Start menu.
 - For RasterLink6Plus, select [Mimaki RasterLink6Plus]-[Profile Update].
- (2) Click [Next].

2. Specify your printer and ink, and click [Next].



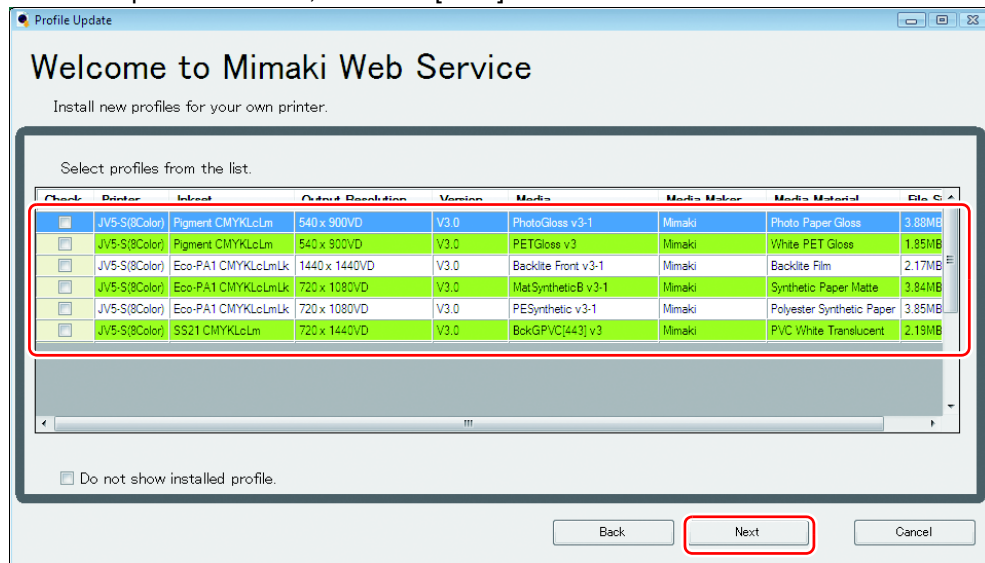
3. Specify the search option and click [Next].

- Checks if there is a profile.



4. Download the profile.

- If there are profiles that meet the settings, the list appears.
(1) Select the profile to install, and click [Next]



- (2) Click [Finish].



- The profile is installed when RasterLink is started next. Refer to [Installation Guide of the RasterLink](#) for details.
- You can also download the profile from our website. (<http://mimaki.com/>)

Typical questions

The answers to the questions/ the troubles frequently asked by the customer are provided.

About errors

● **“Replace a Wiper” appears on the display.**

Time for replacement of the wiper has come.

Replace the wiper by following the procedures in [“Replacing the wiper” in Chapter 4 of Tx300P-1800/Tx300P-1800 MkII Operation Manual.](#)

● **“Waste ink full” appears on the display.**

The waste ink tank will soon be full. Replace the waste ink tank by following the procedures in [“If a Waste Ink Tank Confirmation Message Appears” in Chapter4 of Tx300P-1800/Tx300P-1800 MkII Operation Manual.](#)

Supplied items

Purchase them in a distributor in your district or our office.

For a list of supplies, see ["Replacing consumables" in Chapter 4 of Tx300P-1800/Tx300P-1800 MkII Operation Manual.](#)

