

Software RIP

**RASTER LINK 6** PLUS

# Network Connection Guide

# Table of Contents

---

Precautions .....	3
About this guide .....	4
Notations Used in this Manual .....	4
Symbols Used in this Manual .....	4
How to obtain this manual and related manuals .....	4

## Chapter 1 About RasterLink6Plus

1.1 Introduction .....	6
System Configuration .....	6
1.2 System Requirements .....	7
OS for Windows Client PCs .....	7
OS for Macintosh Client PCs .....	8
1.3 Client PC Printing Methods .....	9
Printing Using a Hot Folder .....	9
Printing by Installing a Printer Driver .....	9
Print by using a USB memory drive or other storage media .....	9

## Chapter 2 RasterLink PC Settings

2.1 Overview of Settings .....	12
About the RasterLink PC .....	12
Flow of Settings .....	12
2.2 Changing the Host Name .....	13
2.3 Workgroup Settings .....	16
2.4 Local Security Policy Settings .....	19
In Windows 7 .....	19
2.5 Shared and Search Settings .....	22
For Windows 8.1, 10, and 11 .....	22
For Windows 7 .....	25
2.6 Creating a Hot Folder and Printer Driver after Printer Registration .....	27

## Chapter 3 Client PC Settings

3.1 Overview of Settings .....	30
3.2 For Windows .....	31
Workgroup Settings (Same for Windows 7, 8.1, 10, and 11) .....	31
For Windows 8.1, 10, and 11 .....	34
For Windows 7 .....	38
3.3 For Macintosh .....	42
For Mac OS X 10.5 to 10.11 and macOS 10.12 to 14 .....	42
For Mac OS X 10.4 .....	54
For Mac OS X 10.3 .....	61
3.4 Checking Host Name and IP Address Settings .....	64

# Precautions

- Any unauthorized use or reproduction, in part or whole, of this manual is strictly prohibited.
- The information in this manual may be subject to change without notice in the future.
- Note that some of the descriptions in this manual may differ from the actual specifications due to improvements and revisions to this software.
- Copying Mimaki Engineering Co. Ltd. software described in this manual to other disks (except for the purpose of backup) or loading it to memory other than for the purpose of running it, is strictly prohibited.
- With the exception of what is provided in the warranty provisions, Mimaki Engineering Co. Ltd. does not assume any liability for any damage (including, but not limited to, the loss of profit, indirect damage, special damage, or other monetary damages) resulting from the use or inability to use this product. The same shall also apply to cases where Mimaki Engineering Co. Ltd. has been advised of the possibility of damage in advance. For example, we shall not be liable for any loss of media (work) caused by use of this product or indirect losses caused by products created using the media.

RasterLink is a trademark or a registered trademark of Mimaki Engineering Co. Ltd. in Japan and other countries.

Adobe, the Adobe logo, Acrobat, Illustrator, Photoshop, and PostScript are the trademarks or registered trademarks of Adobe Inc. in the United States and other countries.

Apple, Macintosh, Mac OS X, and macOS are registered trademarks of Apple Inc.

Microsoft, Windows, Windows 7, Windows 8.1, Windows 10, and Windows 11 are registered trademarks or trademarks of Microsoft Corporation in the United States and other countries.

Other company names and product names described in this manual are trademarks or registered trademarks of their respective companies.




# About this guide

This manual explains the settings for a PC to which RasterLink6Plus has been installed and the procedures for installing printer drivers to a client PC.

## Notations Used in this Manual

- The buttons and items displayed in screens are enclosed in square brackets [ ], such as [Finish] or [Full Color].
- Replace the printer name in this manual with the name of the product you are using.
- "RasterLink PC" is used for the PC to which RasterLink6Plus is installed.
- "RIP-PC" is used in this manual as the host name of RasterLink PC. Read the procedures for replacing the host name to that of the RasterLink PC being used.

## Symbols Used in this Manual

Description		
	Important	The "Important" symbol represents information you must be familiar with when using RasterLink6Plus.
	Tip	The "Tip" symbol represents useful information to know.
	Reference Information	Indicates a reference page with related information. Click on the lettering to display the corresponding page.

## How to obtain this manual and related manuals

The latest version of this manual can be downloaded from our official site.

Other manuals for RasterLink6Plus are available as electronic data in PDF format at:

- Manual CD included with RasterLink6Plus
- Mimaki official site ( <https://mimaki.com/download/software.html> )

# Chapter 1 About RasterLink6Plus



## **This chapter**

This section provides an overview of RasterLink6Plus.

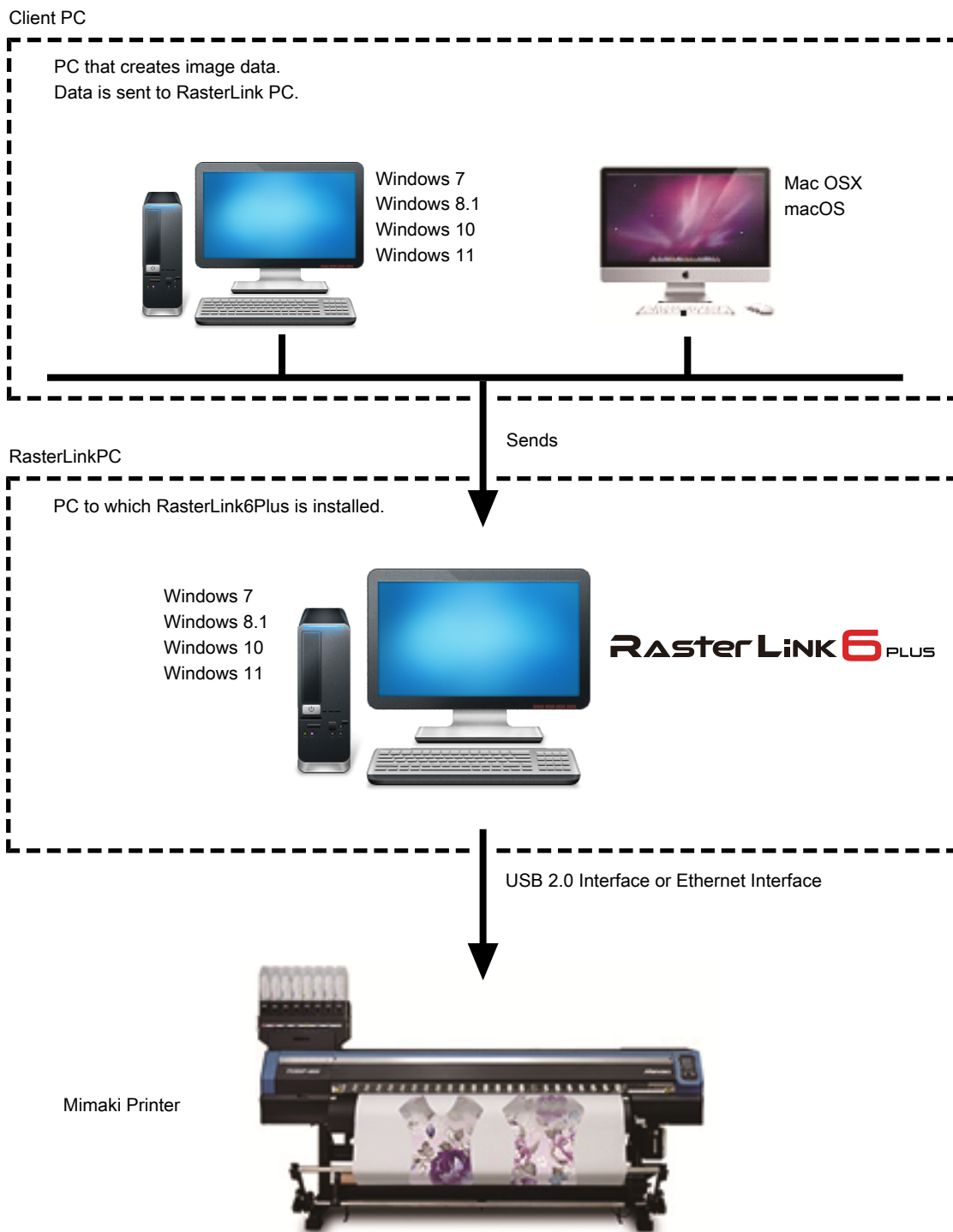
Introduction.....	6	Client PC Printing Methods .....	9
System Configuration.....	6	Printing Using a Hot Folder .....	9
System Requirements .....	7	Printing by Installing a Printer Driver.....	9
OS for Windows Client PCs .....	7	Print by using a USB memory drive or other	
OS for Macintosh Client PCs .....	8	storage media. ....	9

# 1.1 Introduction

Thank you for purchasing this Mimaki product.

RasterLink6Plus is application software used for reading various types of image data and sending it as print data to an inkjet printer manufactured by Mimaki Engineering.

## System Configuration



# 1.2 System Requirements

The PC used as the client must be running an OS as described below.

However, connection might not be possible depending on the OS of the PC to which RasterLink is installed (referred to as the "RasterLink PC" hereinafter), or the client PC might limit the functions that can be connected. Refer to the following table for details.

## OS for Windows Client PCs

OS	Microsoft® Windows 7® Home Premium Service Pack1 or later (32-bit/64-bit version) Microsoft® Windows 7® Professional Service Pack1 or later (32-bit/64-bit version) Microsoft® Windows 7® Ultimate Service Pack1 or later (32-bit/64-bit version) Microsoft® Windows 7® Enterprise Service Pack1 or later (32-bit/64-bit version) Microsoft® Windows 8.1® (32-bit/64-bit version) Microsoft® Windows 8.1® Pro (32-bit/64-bit version) Microsoft® Windows 8.1® Enterprise (32-bit/64-bit version) Microsoft® Windows 10® Home (32-bit/64-bit version) Microsoft® Windows 10® Pro (32-bit/64-bit version) Microsoft® Windows 10® Enterprise (32-bit/64-bit version) Microsoft® Windows 11® Home Microsoft® Windows 11® Pro
----	---

The printing methods of the RasterLink PC and OS, and client PC and OS are as follows.

OS of RasterLink PC		Printing Method	OS of Client PC				
			Windows 7		Windows 8.1 / Windows 10		Windows 11
			32-bit	64-bit	32bit	64bit	-
Windows 7	32-bit/64-bit	Hot folder	OK	OK	OK	OK	-
	32-bit	Printer driver	OK	N/A	OK	N/A	-
	64-bit	Printer driver	N/A	OK	N/A	OK	-
Windows 8.1 / Windows 10	32-bit/64-bit	Hot folder	OK	OK	OK	OK	OK
	32-bit	Printer driver	OK	N/A	OK	N/A	N/A
	64-bit	Printer driver	N/A	OK	N/A	OK	OK
Windows 11	-	Hot folder	-	-	OK	OK	OK
	-	Printer driver	-	-	N/A	N/A	OK

N/A: Not available

## OS for Macintosh Client PCs

Mac OS X 10.3.9 to 10.11, and macOS 10.12 to 14 (Only compatible with SMB connection (Apple Talk is not available))

The printing methods of the RasterLink PC and OS, and client PC and OS are as follows.

OS of RasterLink PC	Printing Method	OS of Client PC								
		Mac OS X				macOS				
		10.3	10.4	10.5 10.6	10.7 to 10.11	10.12 to 10.15	11	12	13	14
Windows 7 Home Premium	Hot folder	N/A	OK	OK	OK	OK	-	-	-	-
	Printer driver	N/A	N/A	OK	OK	OK	-	-	-	-
Windows 7 Professional / Ultimate / Enterprise	Hot folder	N/A	OK	OK	OK	OK	-	-	-	-
	Printer driver	N/A	OK	OK	OK	OK	-	-	-	-
Windows 8.1	Hot folder	OK	OK	OK	OK	OK	OK	OK	-	-
	Printer driver	N/A	N/A	N/A	OK	OK	OK	N/A	-	-
Windows 10	Hot folder	N/A	N/A	OK	OK	OK	OK	OK	OK	OK
	Printer driver	N/A	N/A	N/A	OK	OK	OK	OK	OK	N/A
Windows 11 (21H2)	Hot folder	-	-	-	N/A	OK	OK	OK	OK	OK
	Printer driver	-	-	-	N/A	N/A	N/A	OK	OK	N/A
Windows 11 (22H2 or later)	Hot folder	-	-	-	N/A	OK	OK	OK	OK	OK
	Printer driver	-	-	-	N/A	N/A	N/A	N/A	N/A	N/A

N/A: Not available



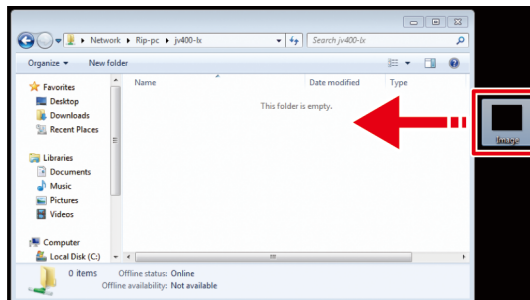
# 1.3 Client PC Printing Methods

**Important!**

- Be sure to set the user account password using the RasterLink PC. If you do not set a password, you cannot connect from the client PC.

## Printing Using a Hot Folder

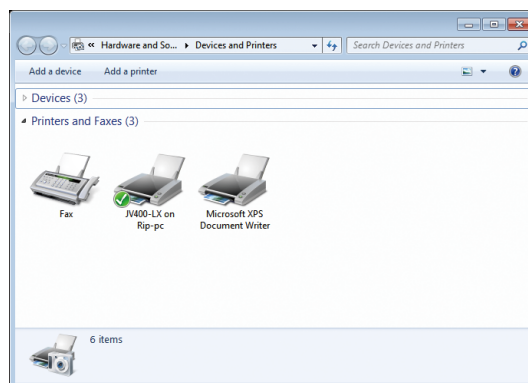
RasterLink6Plus creates a folder for receiving image data called a "hot folder" on the PC to which it is installed. Drag and drop image data from the client PC to this hot folder to transfer the data to RasterLink6Plus.



## Printing by Installing a Printer Driver

If printing by directly connecting with Adobe Illustrator, Adobe Photoshop, or similar application, use the printer driver created by RasterLink6Plus.

Specify the printer driver created by RasterLink6Plus in the same manner as a regular printer driver.



You can use either of the following methods to create a hot folder and printer driver.

- Create a hot folder and printer driver when registering the printer by use of the [Printer Management] function. (Refer to the separate RasterLink6Plus installation guide.)
- Use the [Favorite] function to create a hot folder and printer driver. 🗑️ ["Creating a Hot Folder and Printer Driver after Printer Registration"\(P. 27\)](#)

**Important!**

When printing does not work even after following the procedures.

- The printing method using a hot folder or printer driver is based on an OS function, and the failure to print can be caused by a problem with the Windows or Macintosh OS or a change in the specifications. If you cannot print even after following the procedure, use a USB memory drive or other storage media to move the data.

## Print by using a USB memory drive or other storage media.

The image data can be imported to RasterLink6Plus by moving it from the client PC to the RasterLinkPC by using a USB memory drive or other storage media.



# Chapter 2 RasterLink PC Settings



## This chapter

This section describes the settings required to connect RasterLink6Plus to the network and so that it operates normally.

Overview of Settings .....	12	Local Security Policy Settings .....	19
About the RasterLink PC.....	12	In Windows 7 .....	19
Flow of Settings.....	12	Shared and Search Settings .....	22
Changing the Host Name .....	13	For Windows 8.1, 10, and 11 .....	22
Workgroup Settings .....	16	For Windows 7 .....	25
		Creating a Hot Folder and Printer Driver after Printer Registration.....	27

# 2.1 Overview of Settings




## About the RasterLink PC

RasterLink PC indicates the PC that installs RasterLink6Plus and the PC to which the software is installed.

## Flow of Settings

The general flow of RasterLink PC settings is as follows.

### 1. Specify settings before installing RasterLink6Plus.

-  ["Changing the Host Name"\(P. 13\)](#)
-  ["Workgroup Settings"\(P. 16\)](#)
-  ["Local Security Policy Settings"\(P. 19\)](#)

### 2. Install RasterLink6Plus.

RasterLink6Plus installation printer registration (Refer to the separate "RasterLink6Plus Installation Guide".)

### 3. Specify settings after installing RasterLink6Plus.

-  ["Shared and Search Settings"\(P. 22\)](#)

Change the common settings of the RasterLink PC in order to connect the client PC with the RasterLink PC folders and printers.

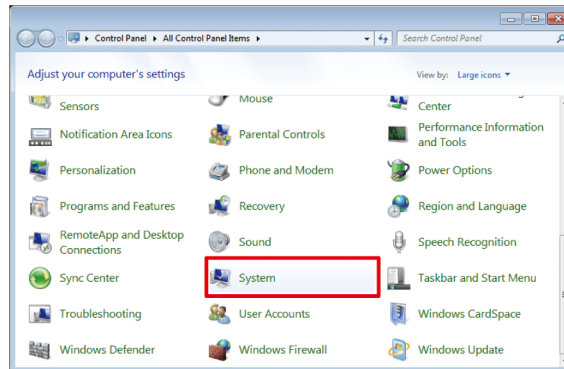
## 2.2 Changing the Host Name

Specify the host name (computer name) in order to identify the RasterLink PC on the network.

If there are multiple RasterLink PCs on the same network, you must change the names so that the host name is not duplicated.

An example where "RIP-PC" is set as the host name is used for this explanation.

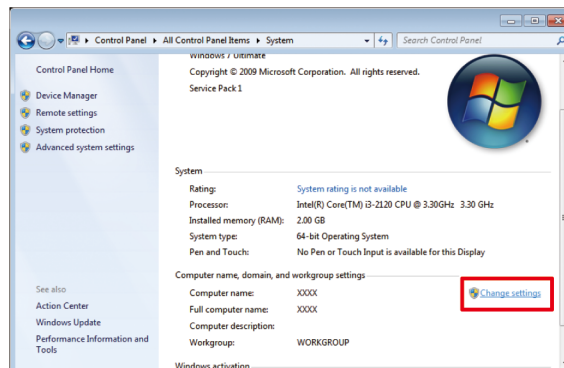
### 1 In [Control Panel], click or double-click [System].

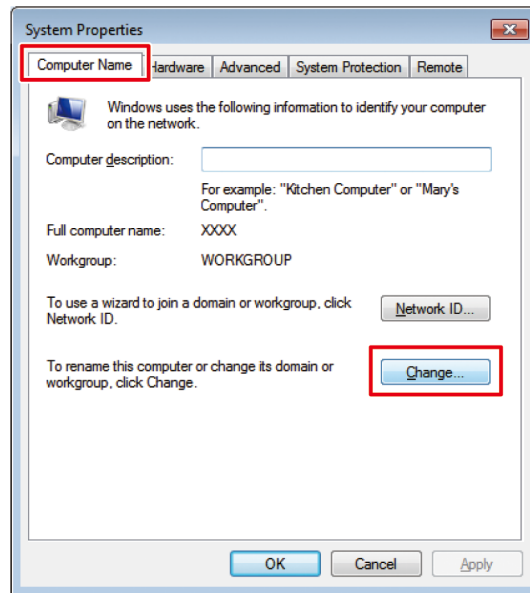
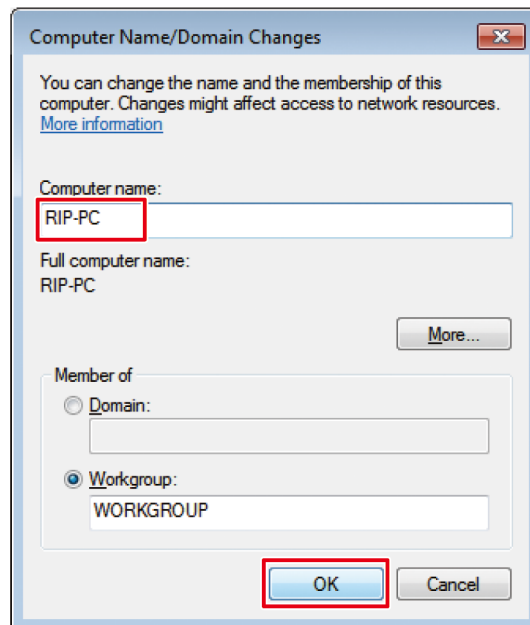


### 2 Click [Change settings].

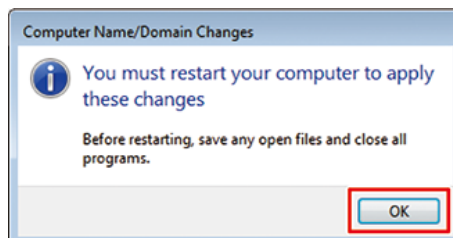


- For Windows 10  
In the left pane, click [About], then click [System info] or [Rename this PC] in the right pane.
- For Windows 11  
Click [Domain or workgroup] in the right pane.
- If the user accounts control screen is displayed, click [Continue].

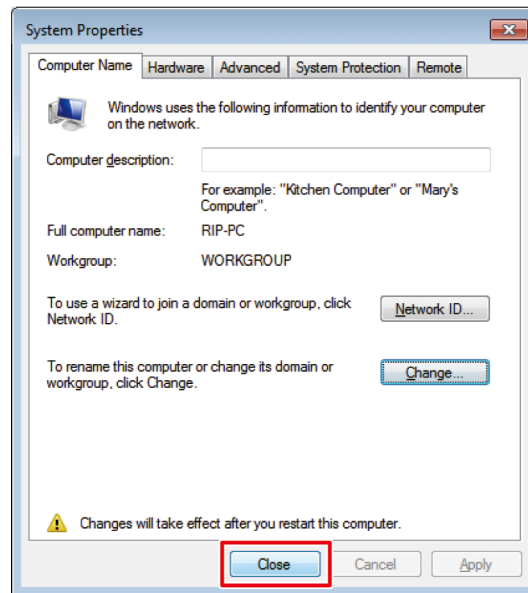


**3** Click the [Computer Name] tab, and then click [Change].**4** Change the [Computer Name], and then click [OK].**5** When the confirmation screen is displayed, click [OK].

- Do not restart the computer yet.

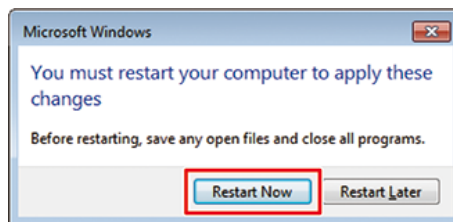


## 6 In the [System Properties] screen, click [Close].



## 7 When the restart confirmation screen is displayed, click [Restart Now].

- The PC is restarted.

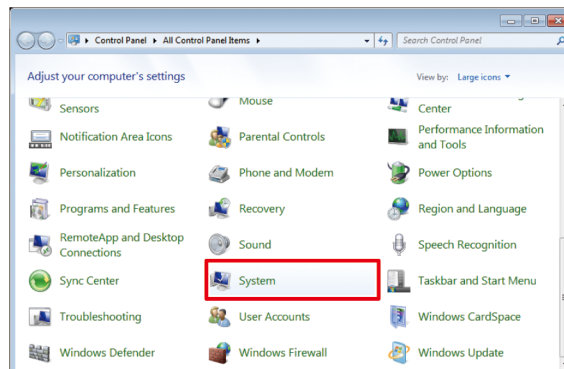


## 2.3 Workgroup Settings

Set the RasterLink PC so that it can join the workgroup named "WORKGROUP".

If joining a domain network, consult with network administrators regarding the network being used.

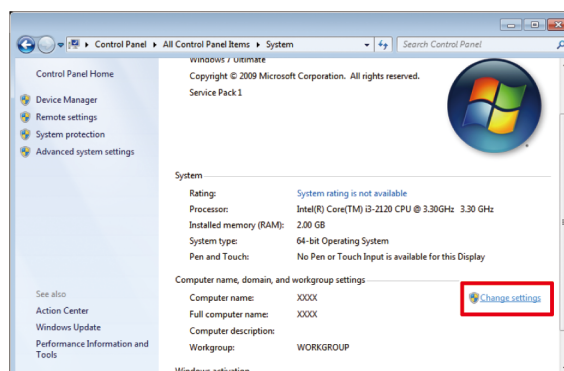
### 1 In the [Control Panel], double-click [System].



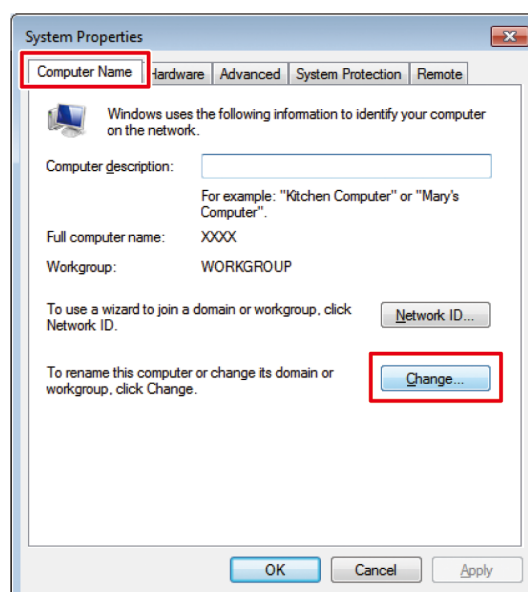
### 2 Click [Change settings].



- For Windows 10  
In the left pane, click [About], then click [System info] or [Rename this PC] in the right pane.
- For Windows 11  
Click [Domain or workgroup] in the right pane.

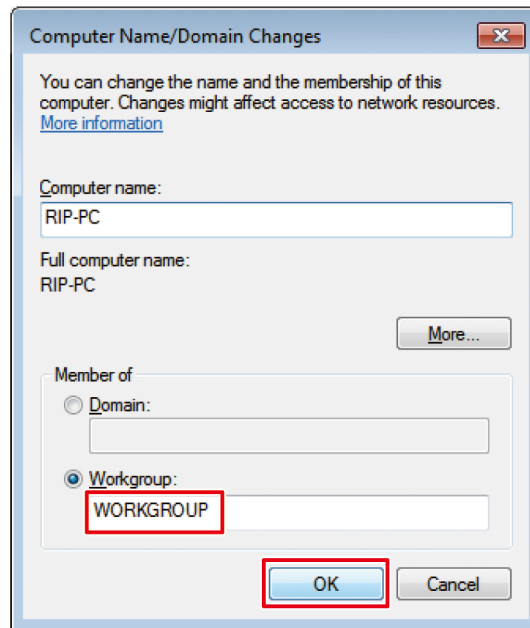


### 3 Click the [Computer Name] tab, and then click [Change].



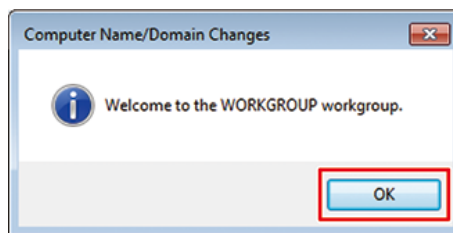


#### 4 Change to [WORKGROUP], and then click [OK].



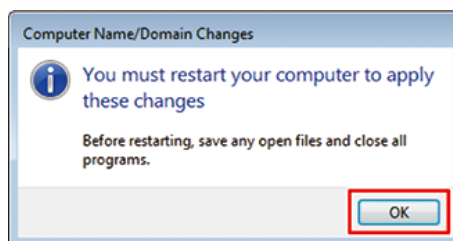
- Important!**
- Enter the workgroup name using single-byte alphanumeric characters.
  - Input alphabet characters using capital letters.
  - It is not necessary to change the [Computer Name].

#### 5 Click [OK].

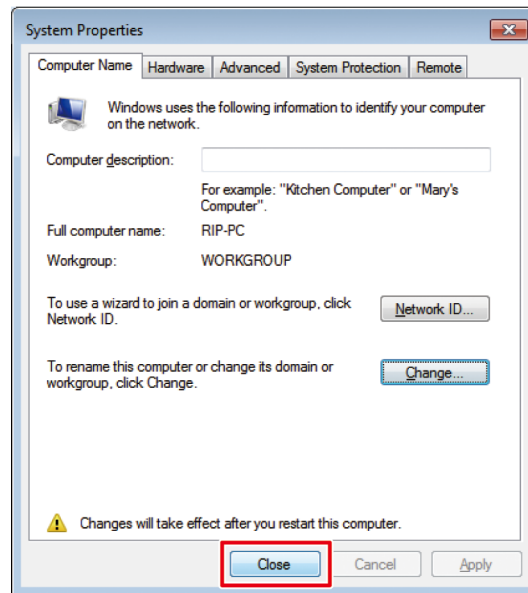


#### 6 When the confirmation screen is displayed, click [OK].

- Do not restart the computer yet.

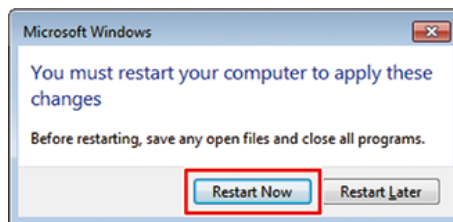


## 7 In the [System Properties] screen, click [Close].



## 8 Click [Restart Now].

- The PC is restarted.



## 2.4 Local Security Policy Settings

### In Windows 7

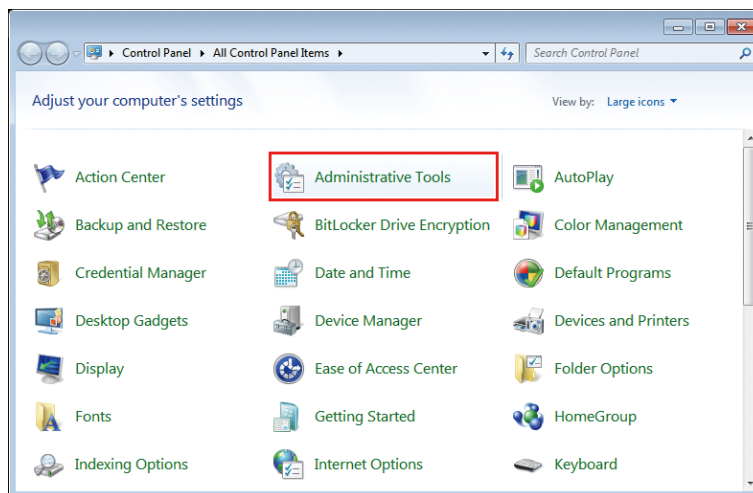
It is necessary to change the local security policy before installing if installing RasterLink6Plus on Windows 7 and using SMB connection to RasterLinkPC with Macintosh as the client PC.

If the RasterLink PC is joining a domain network, it might not be necessary to change these settings.

Check with the network administrator for details.

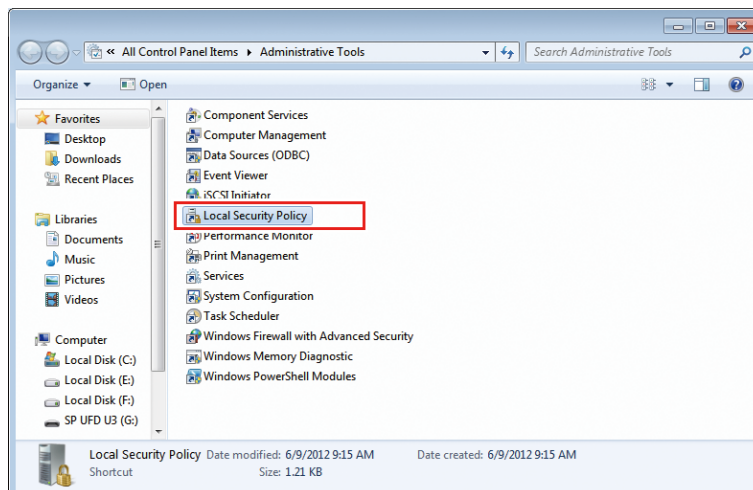
**Important!** Windows 7 Home Premium does not have a local security policy function.

#### 1 In the [Control Panel], double-click [Administrative Tools].

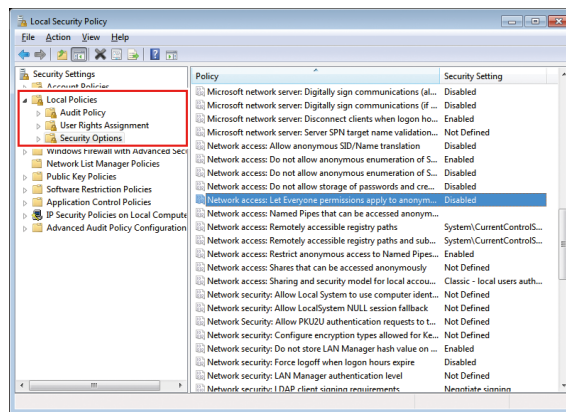


#### 2 In [Administrative Tools], double-click [Local Security Policy].

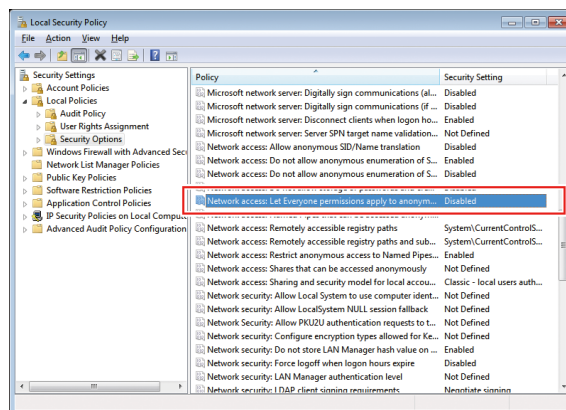
- If the user accounts control screen is displayed, click [Continue].



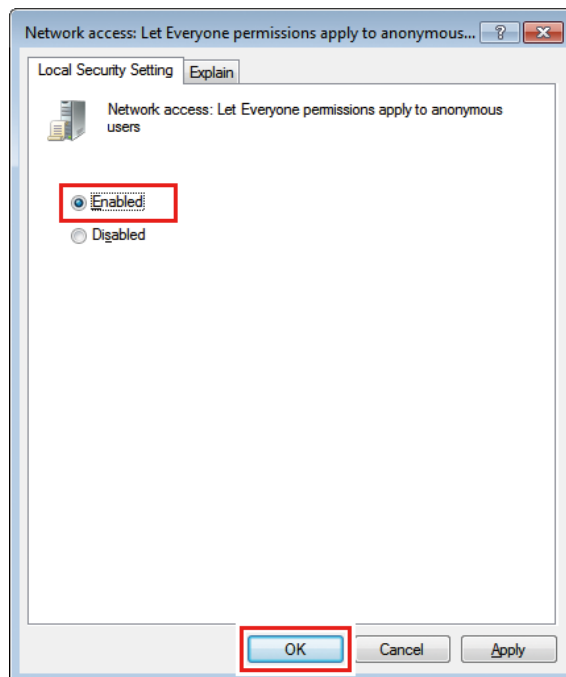
### 3 In [Local Security Policy], select [Local Policy] - [Security Options].



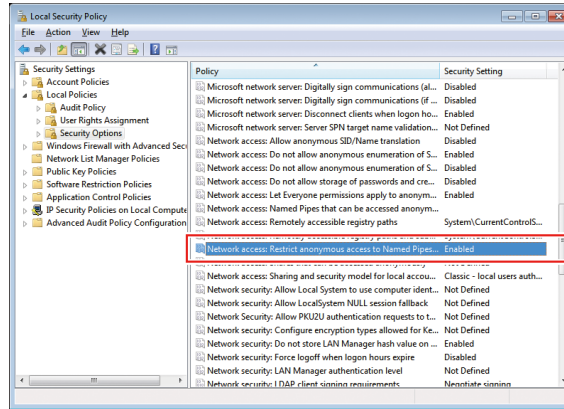
### 4 Double-click [Network access: Let Everyone permissions apply to anonymous users].



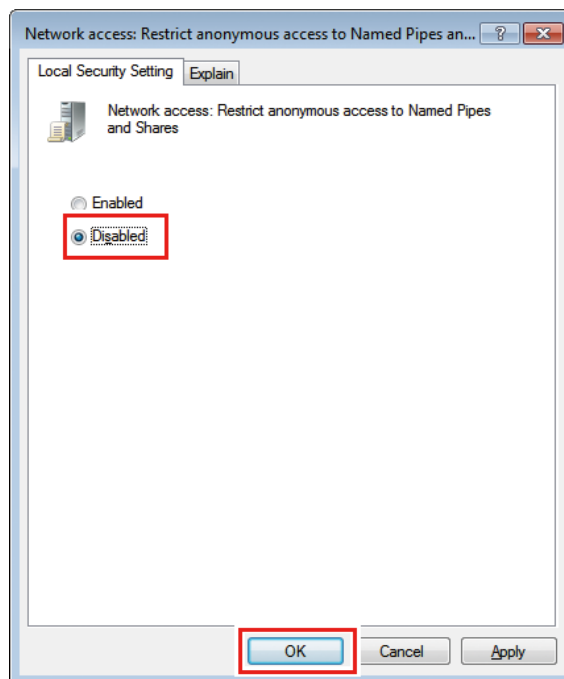
### 5 In the [Network access: Let Everyone permissions apply to anonymous users] dialog box, select [Enabled], and then click [OK].



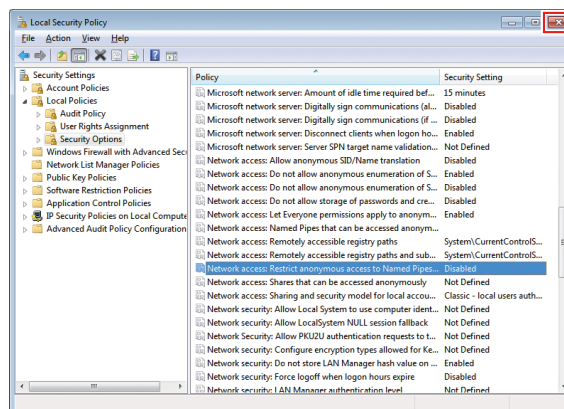
## 6 Double-click [Network access: Restrict anonymous access to Named Pipes and Shares].



## 7 In the [Network access: Restrict anonymous access to Named Pipes and Shares] dialog box, select [Disabled], and then click [OK].



## 8 Click [X].



## 9 The PC is restarted.

## 2.5 Shared and Search Settings

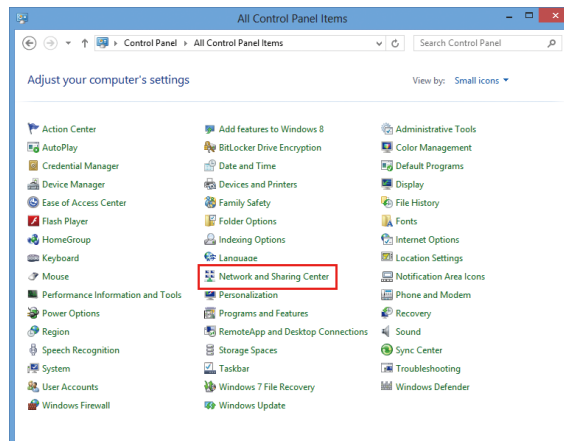
Specify settings so that you can access the RasterLink PC from the client PC connected to the network.

This section describes how to specify settings so that the RasterLink PC joins the workgroup named "WORKGROUP", and you can share and search on a private network.

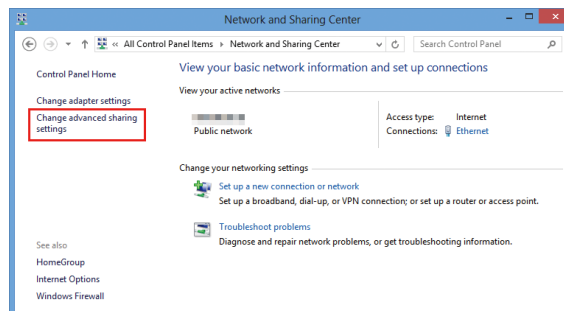
If joining a domain network, consult with network administrators regarding the network being used.

### For Windows 8.1, 10, and 11

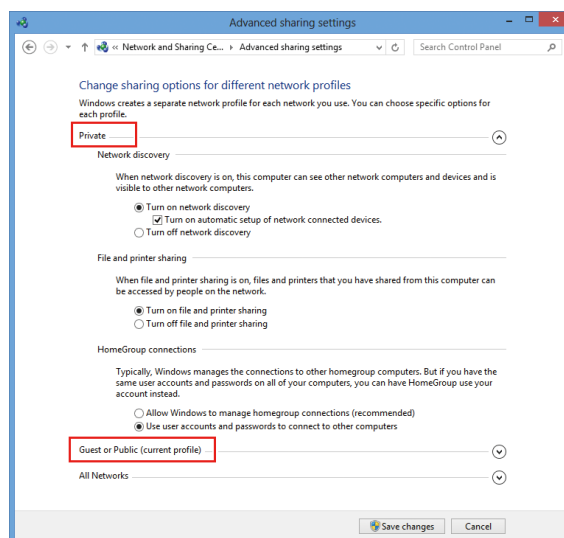
- 1 In the [Control Panel], click [Network and Sharing Center].



- 2 Click [Change advanced sharing settings].

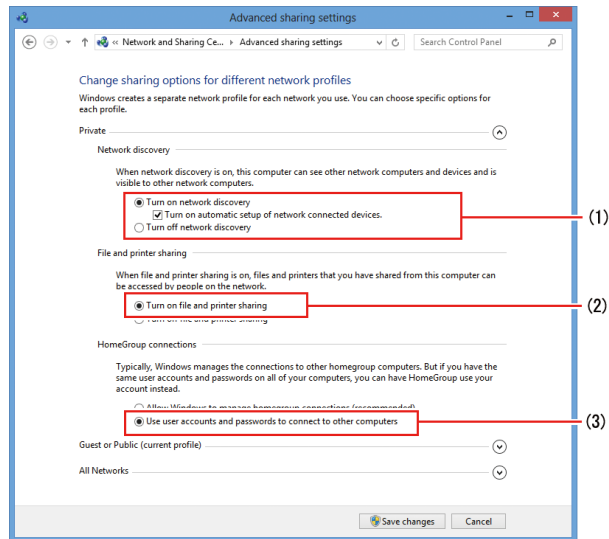


- 3 Select either [Private] or [Guest or Public] according to the network configuration.



## 4 Set the following items.

- (1) Select [Turn on network discovery].
  - If [Private], select the check box next to [Turn on automatic setup of network connected devices].
- (2) Select [Turn on file and printer sharing].
- (3) If [Private], select [Connect to other computer using user account and password]. (Only for Windows 8.1)

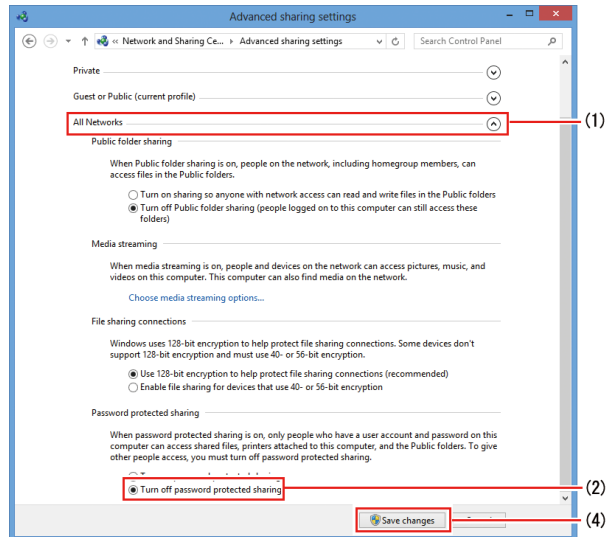


For Windows 11 (22H2 or later)

- (1) Turn on [Network discovery].
  - If set to [Private], select the [Set up network connected devices automatically] check box.
- (2) Turn on [File and printer sharing].

## 5 Perform the following procedures.

- (1) Open [All Networks].
- (2) Select [Turn off password protected sharing]. (Only if this option is shown.)
- (3) Select [Turn on sharing so anyone with network access can read and write files in the Public folders]. (Only if this option is shown.)
- (4) Click [Save changes].



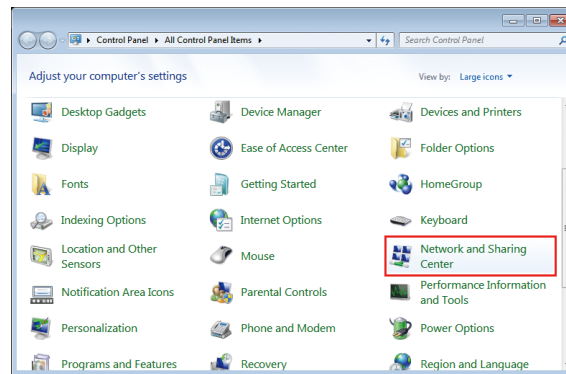
For Windows 11 (22H2 or later)

- (1) Open [All Networks].
- (2) Turn on [Public folder sharing].
- (3) Turn off Password protected sharing].

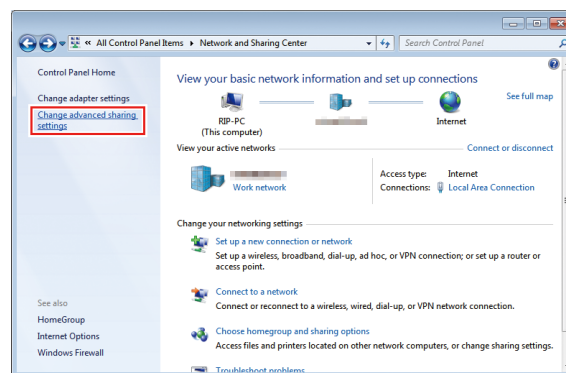


## For Windows 7

- 1 In the [Control Panel], double-click [Network and Sharing Center].

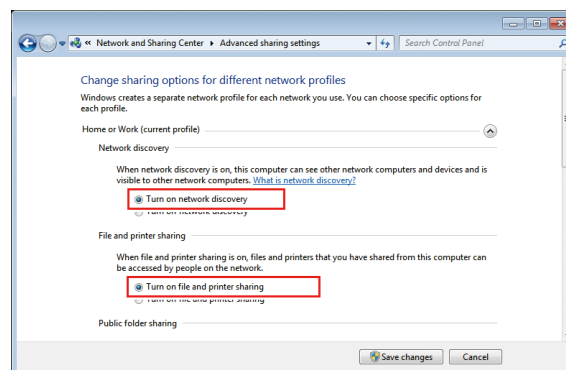


- 2 Click [Change advanced sharing settings].

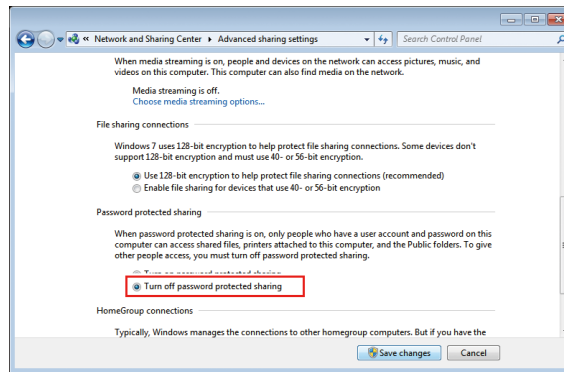


- 3 Change the setting to either [Home or Work] or [Public] according to the network configuration. If a network administrator is present, check with him/her for which setting should be used.

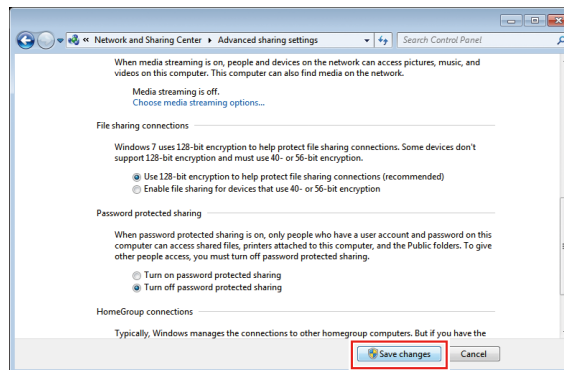
- 4 Select [Turn on network discovery] and [Turn on file and printer sharing].



## 5 Select [Turn off password protected sharing].



## 6 Click [Save changes].



## 2.6 Creating a Hot Folder and Printer Driver after Printer Registration

If you did not create a hot folder and printer driver when you registered the printer or created a favorite, you can create it later by following the steps below.



- For printer registration procedures, refer to the separate "RasterLink6Plus Reference Guide".

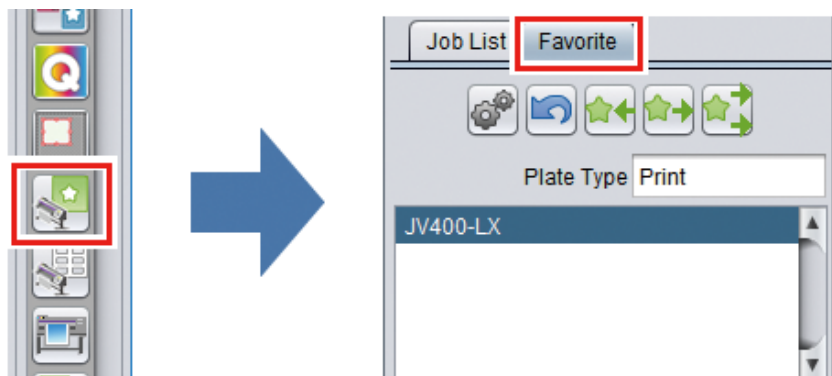
### 1 Start RasterLink6Plus.



- If creating a hot folder and printer driver, start RasterLink6Plus with administrator authority.

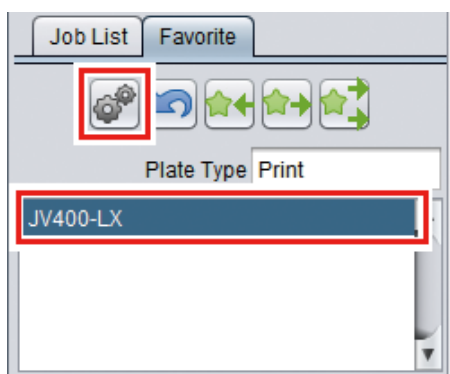
### 2 Select the [Favorite] tab.

- From the function icons here, select the  (normal printing) icon, and then select the [Favorite] tab on the left.

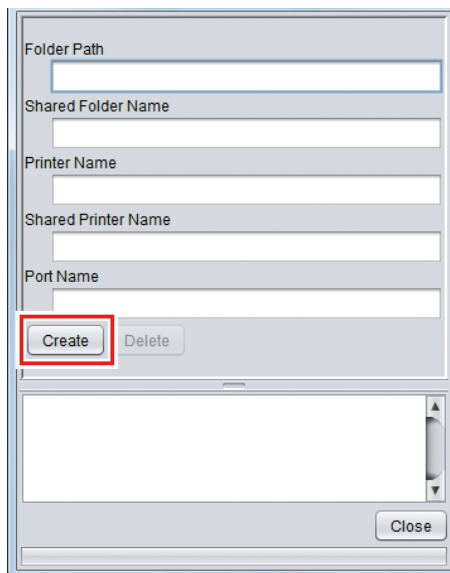


### 3 Select the favorite for which you want to create a hot folder and printer driver from the list, and then click on the icon.

- The [Hot Folder] dialog box will appear.



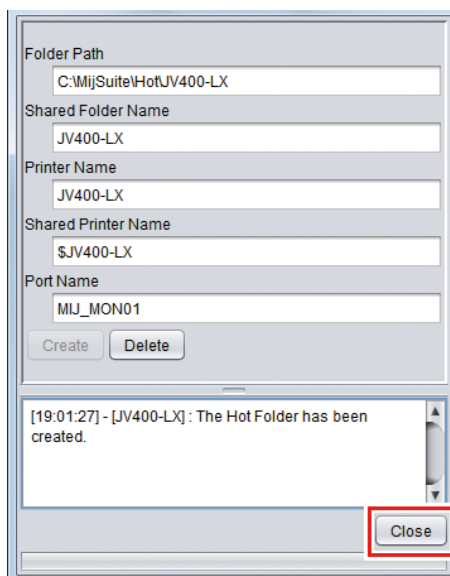
**4** Click [Create].



The screenshot shows a configuration dialog box with the following fields: Folder Path, Shared Folder Name, Printer Name, Shared Printer Name, and Port Name. Below these fields are two buttons: 'Create' and 'Delete'. The 'Create' button is highlighted with a red rectangle. At the bottom right of the dialog is a 'Close' button.

**5** Click [Close].

- The hot folder and printer driver are created.



The screenshot shows the same configuration dialog box, but now with the following values entered: Folder Path: C:\MijSuite\HotJV400-LX; Shared Folder Name: JV400-LX; Printer Name: JV400-LX; Shared Printer Name: \$JV400-LX; Port Name: MJ\_MON01. The 'Create' and 'Delete' buttons are now disabled. A message box at the bottom of the dialog reads: "[19:01:27] - [JV400-LX]: The Hot Folder has been created." The 'Close' button at the bottom right is highlighted with a red rectangle.

# Chapter 3 Client PC Settings



## This chapter

This section describes the client PC settings for accessing RasterLink6Plus on the network.

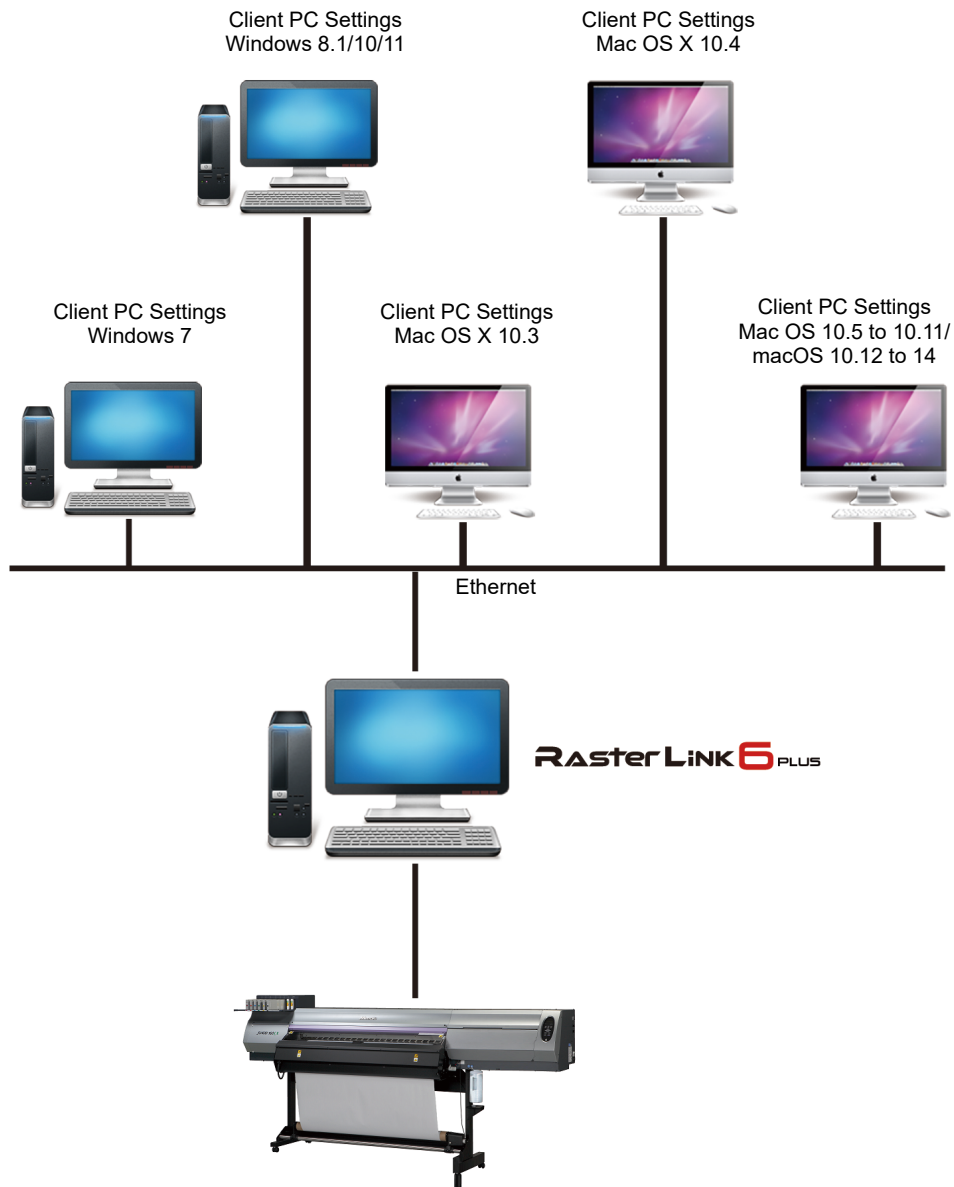
Overview of Settings .....	30	For Macintosh.....	42
For Windows.....	31	For Mac OS X 10.5 to 10.11 and macOS	
Workgroup Settings (Same for Windows 7,		10.12 to 14 .....	42
8.1, 10, and 11).....	31	For Mac OS X 10.4 .....	54
For Windows 8.1, 10, and 11 .....	34	For Mac OS X 10.3 .....	61
For Windows 7 .....	38	Checking Host Name and IP Address Settings	
		.....	64

# 3.1 Overview of Settings

You can use Windows 7/8.1/10 or 11, or Macintosh on the client PC.



- This section describes printer management of RasterLink6Plus using a registered JV400-LX printer. If another printer has been registered, change the printer name before specifying the settings.



## 3.2 For Windows

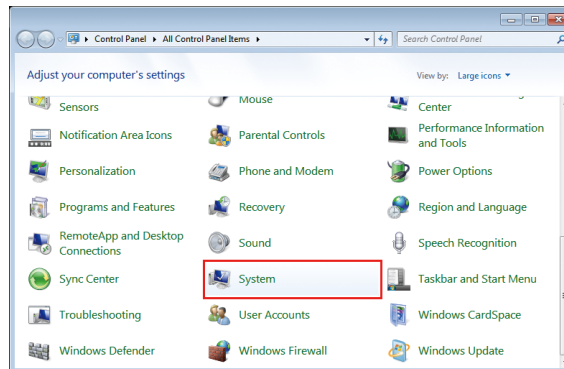
### Workgroup Settings (Same for Windows 7, 8.1, 10, and 11)

Specify settings so that the client PC can join the workgroup specified by the RasterLink PC.

If joining a domain network, consult with network administrators regarding the network being used.

An example with "WORKGROUP" specified as the workgroup name is used for explaining the settings.

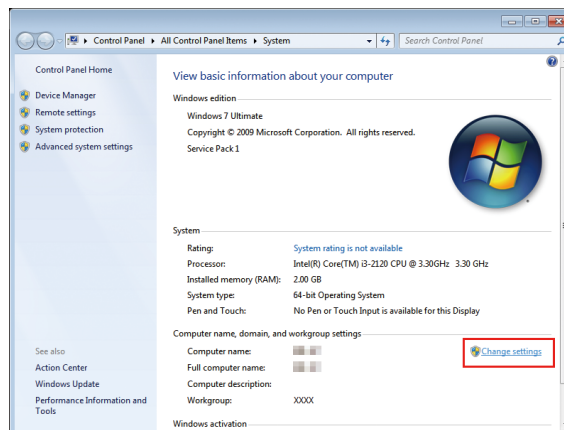
#### 1 In [Control Panel], click or double-click [System].



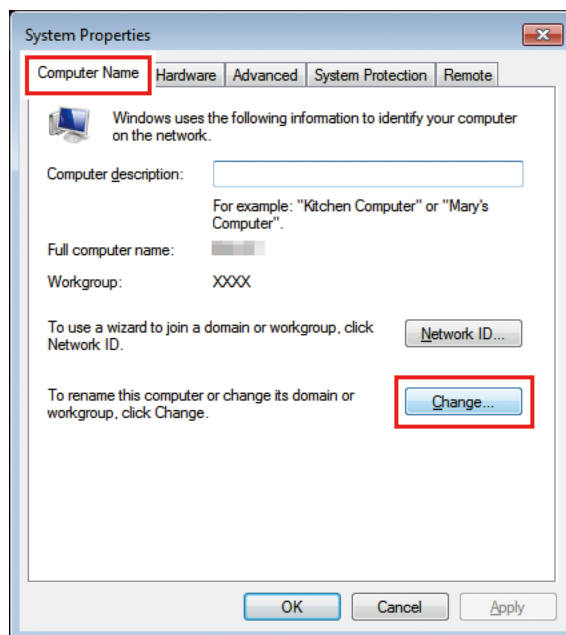
#### 2 Click [Change settings].



- For Windows 10  
In the left pane, click [About], then click [System info] or [Rename this PC] in the right pane.
- For Windows 11  
Click [Domain or workgroup] in the right pane.

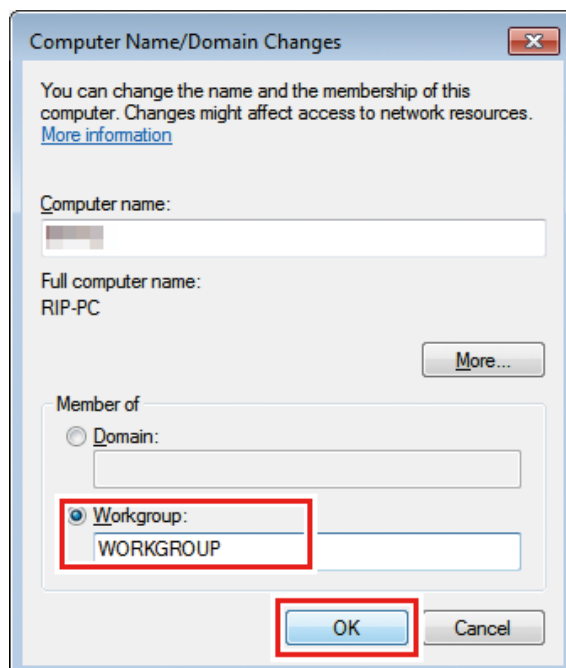


### 3 Select the [Computer Name] tab, and then click [Change].

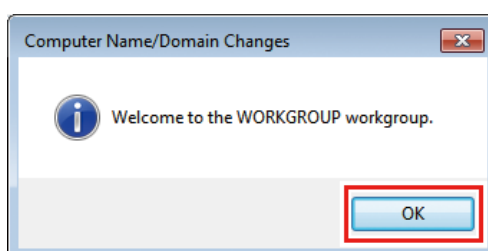


### 4 Change to [WORKGROUP], and then click [OK].

**Important!** • Input the same name as the workgroup name set by the RasterLink PC.



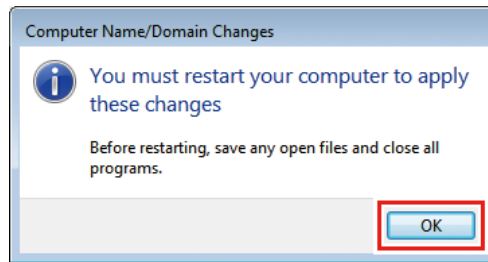
### 5 Click [OK].



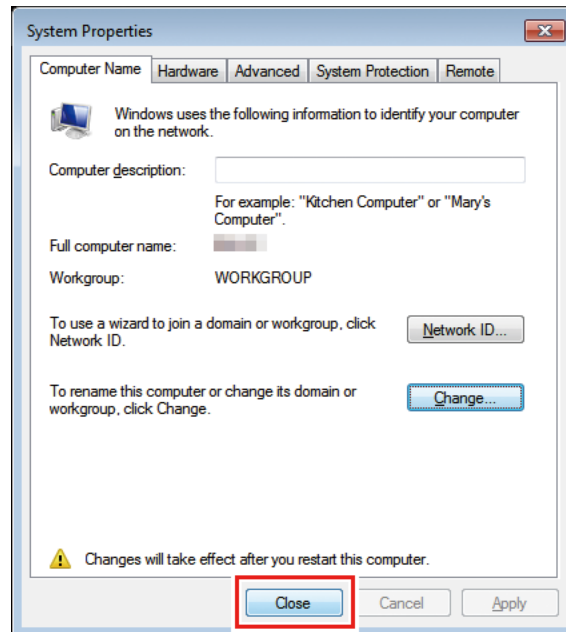


## 6 When the confirmation screen is displayed, click [OK].

- Do not restart the computer yet.

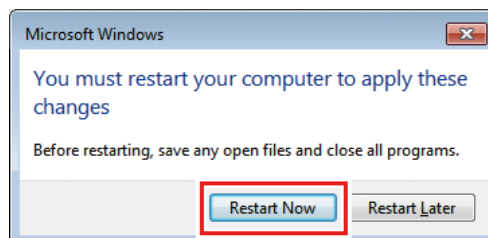


## 7 In the [System Properties] screen, click [Close].



## 8 Click [Restart Now].

- The PC is restarted.



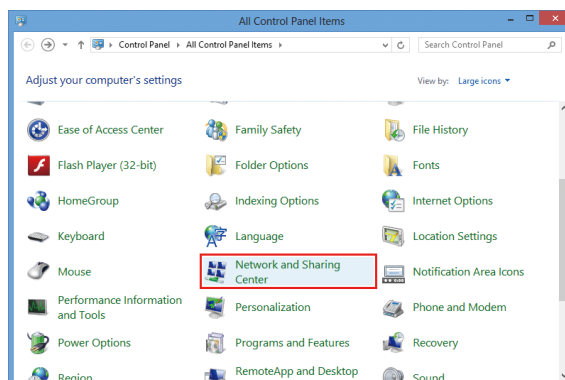
## For Windows 8.1, 10, and 11

### Shared and Search Settings

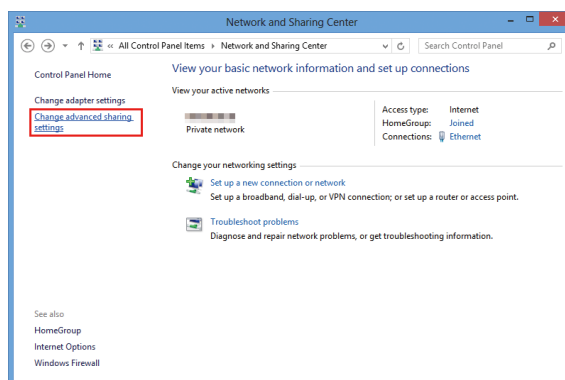
Have the client PC join the workgroup and then specify settings for sharing and searching on a private network.

If joining a domain network, consult with network administrators regarding the network being used.

- 1 In the [Control Panel], click [Network and Sharing Center].

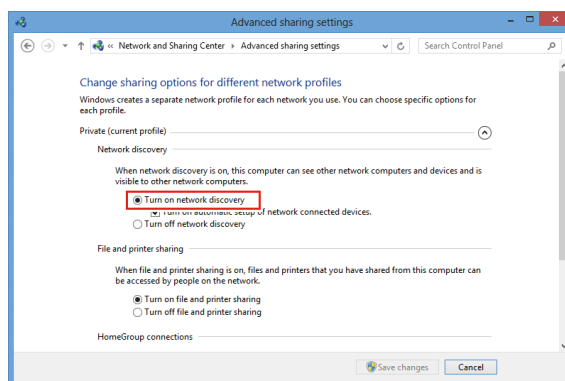


- 2 Click [Change advanced sharing settings].



- 3 Specify either [Private] or [Guest or Public] according to the network configuration. If a network administrator is present, check with him/her for which setting should be used.

- 4 Select [Turn on network discovery].

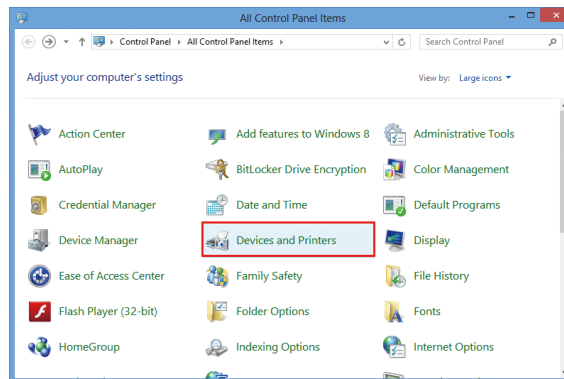


- For Windows 11 (22H2 or later)  
Turn on [Network discovery].

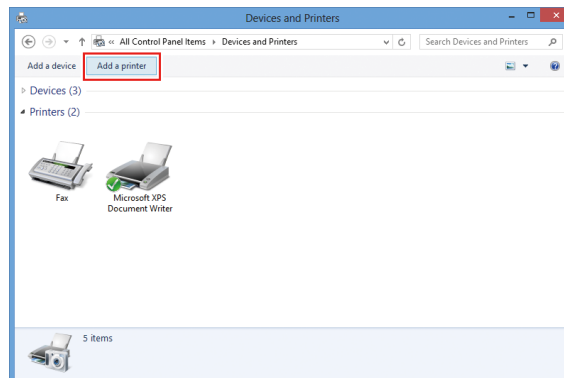
## Printer Driver Installation

This section describes how to install a printer driver.

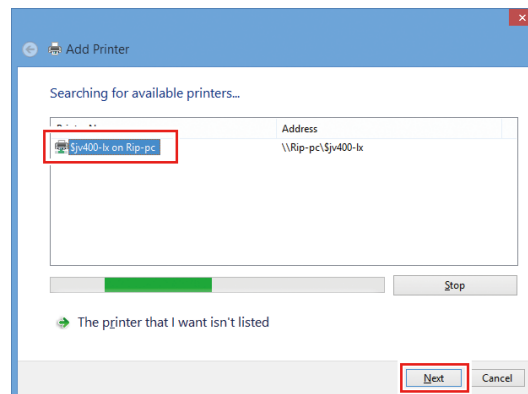
- 1 In the [Control Panel], double-click [Devices and Printers].



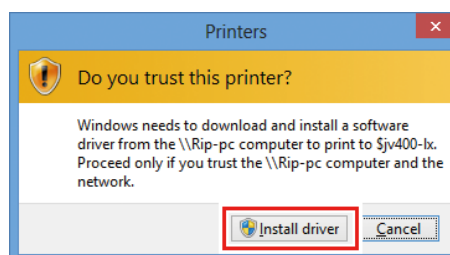
- 2 Click [Add a printer].



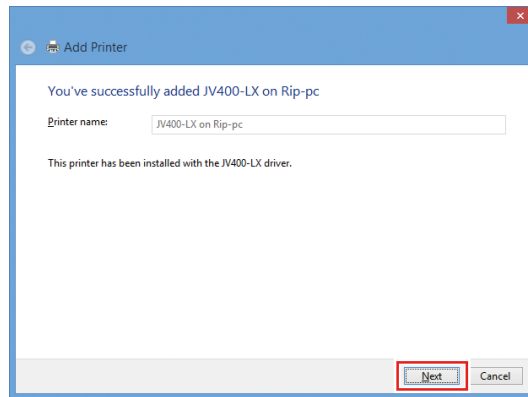
- 3 Select the printer of the RasterLink PC you want to share, and then click [Next].



- 4 In the [Printers] dialog box, click [Install driver].

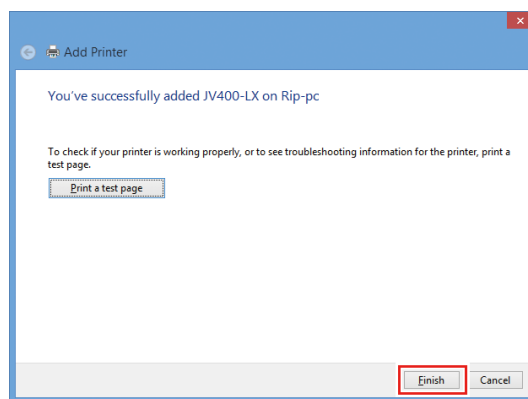


## 5 Click [Next].

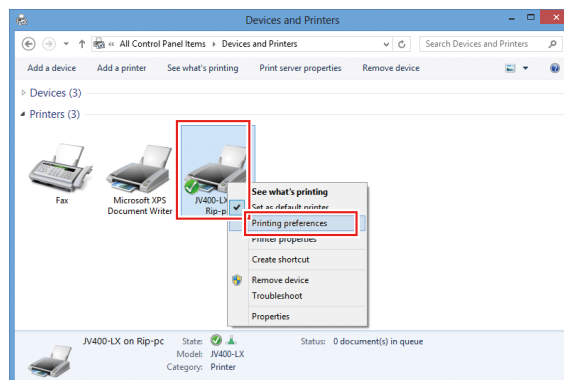


## 6 Click [Finish].

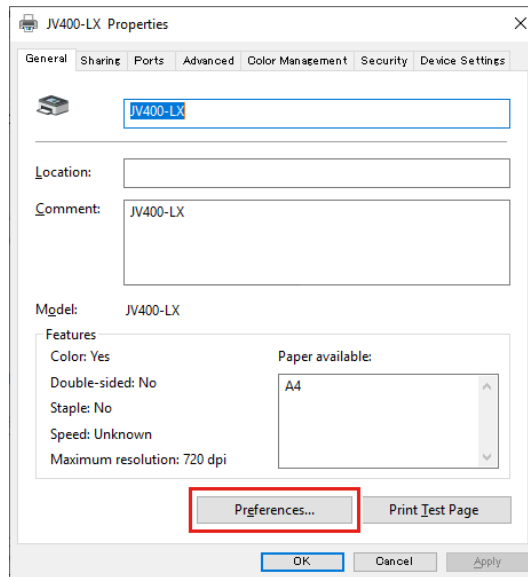
- The printer has now been added.



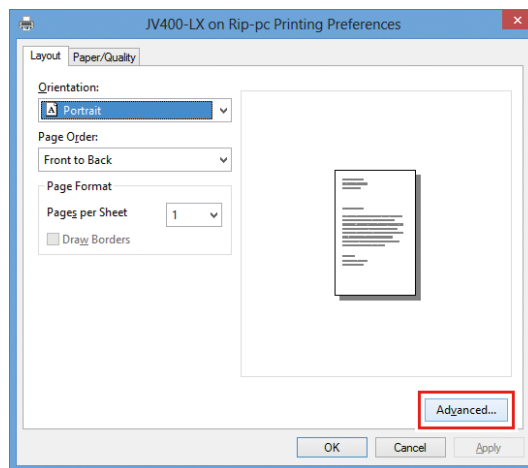
## 7 Right-click the added printer, and then click [Printing Preferences...] in the displayed menu.



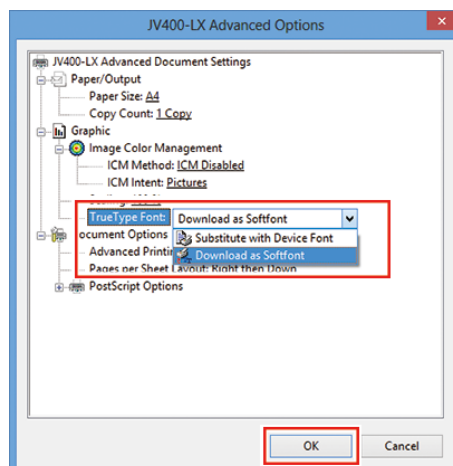
## 8 Click [Preferences].



## 9 Click [Advanced].



## 10 For [TrueType Font], select [Download as Softfont], and then click [OK].



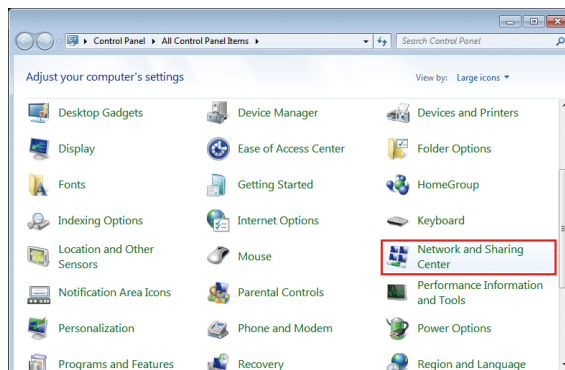
## For Windows 7

### Shared and Search Settings

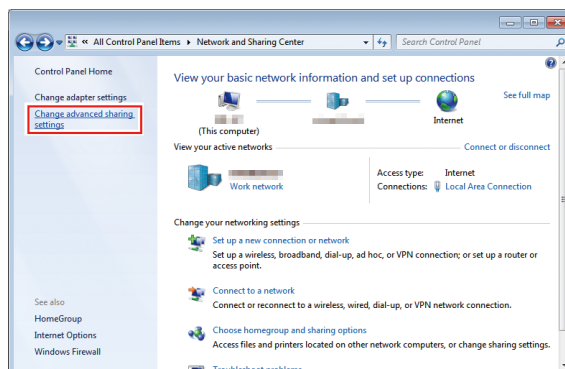
Have the client PC join the workgroup and then specify settings for sharing and searching on a private network.

If joining a domain network, consult with network administrators regarding the network being used.

- 1 In the [Control Panel], double-click [Network and Sharing Center].

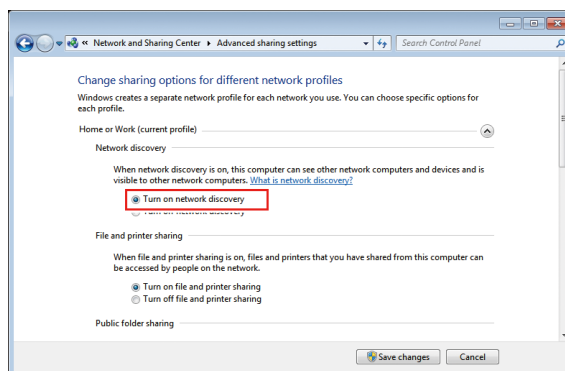


- 2 Click [Change advanced sharing settings].



- 3 Change the setting to either [Home or Work] or [Public] according to the network configuration. If a network administrator is present, check with him/her for which setting should be used.

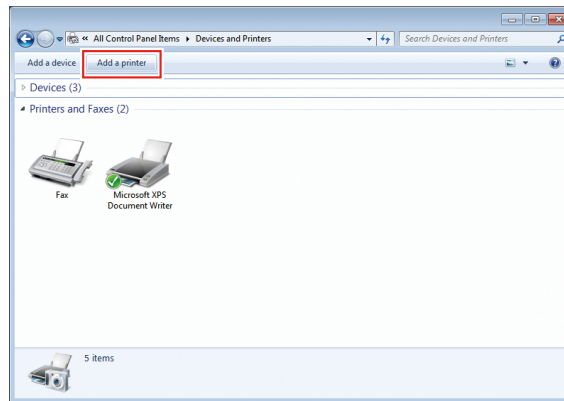
- 4 Select [Turn on network discovery].



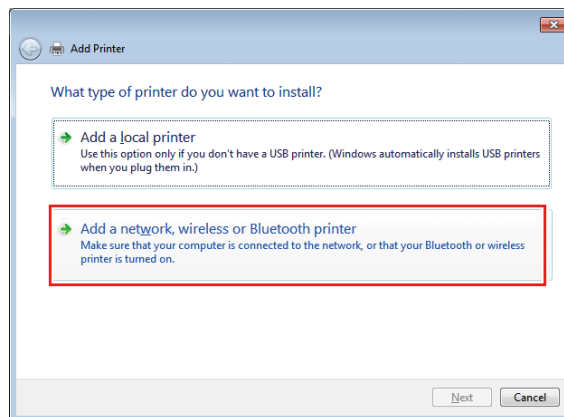
## Printer Driver Installation

This section describes how to install a printer driver.

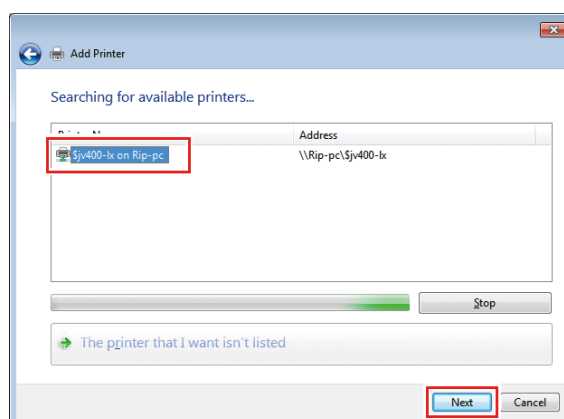
- 1 In the [Start] menu, select [Devices and Printers].
- 2 Click [Add a printer].



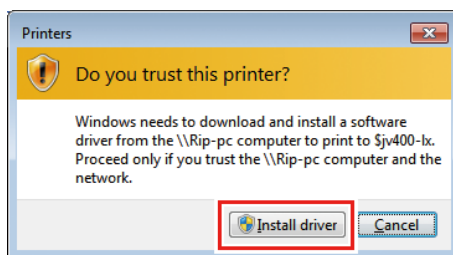
- 3 Click [Add a network, wireless or Bluetooth printer].



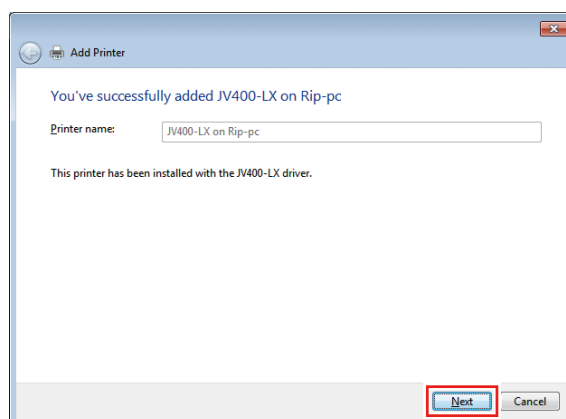
- 4 Select the printer of the RasterLink PC you want to share, and then click [Next].



5 In the [Printers] dialog box, click [Install driver].

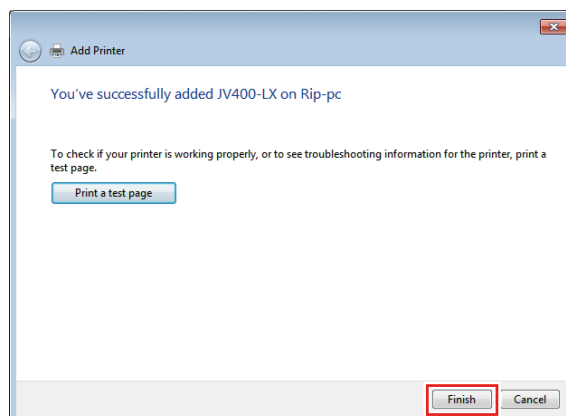


6 Click [Next].

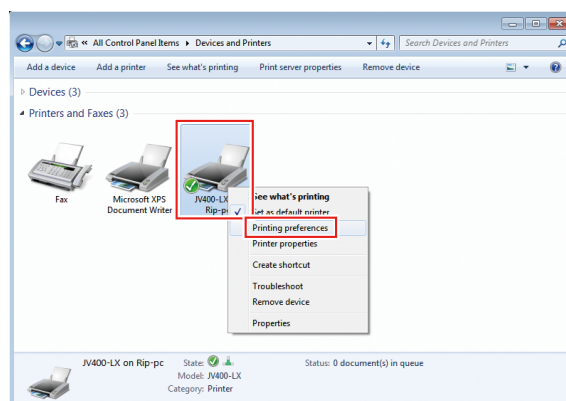


7 Click [Finish].

- The printer has now been added.

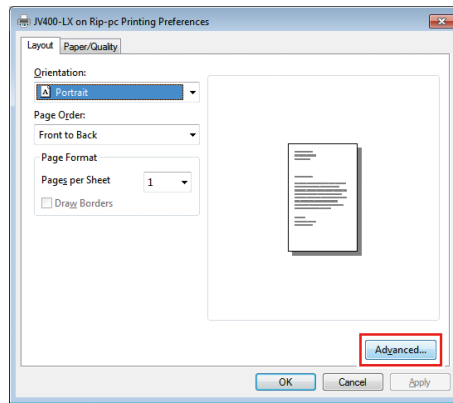


8 Right-click the added printer, and then click [Printing Preferences] in the displayed menu.

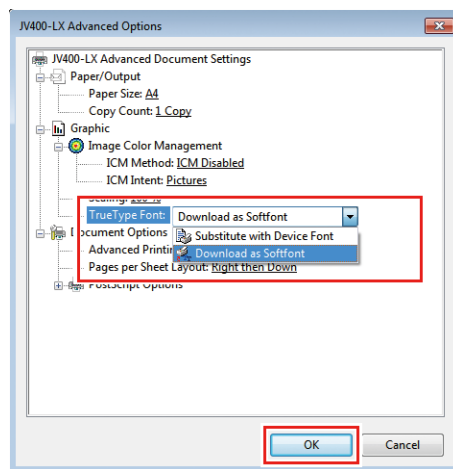




## 9 Click [Advanced].



## 10 For [TrueType Font], select [Download as Sofffont], and then click [OK].



## 3.3 For Macintosh

### For Mac OS X 10.5 to 10.11 and macOS 10.12 to 14

An example using Mac OS X 10.7 is shown to describe the settings. The procedures are the same for other OS unless specifically indicated otherwise.

#### Workgroup Settings

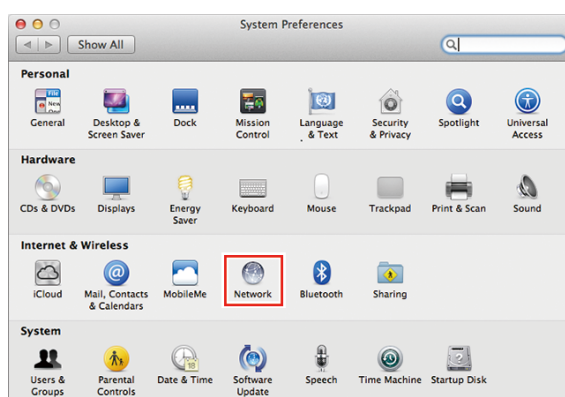
Specify settings so that the client PC can join the workgroup specified by the RasterLink PC.

If joining a domain network, consult with network administrators regarding the network being used.

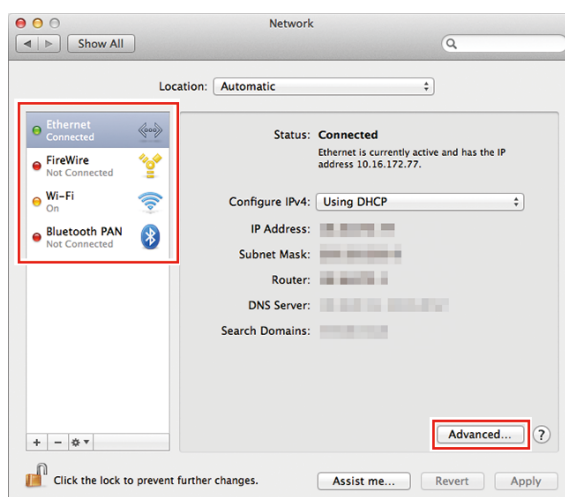
An example with "WORKGROUP" specified as the workgroup name is used for explaining the settings.

Specify the workgroup name as "WORKGROUP" in the RasterLink PC as well.

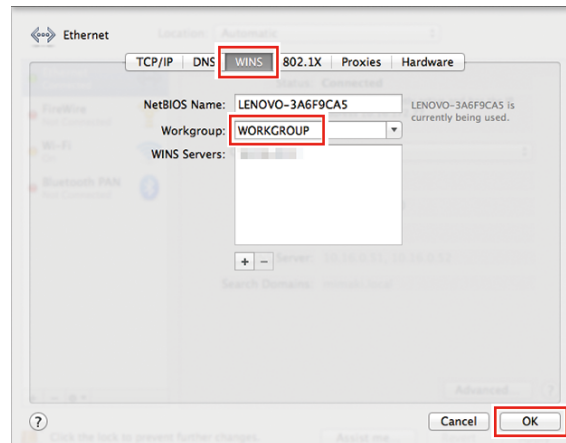
- 1 In the [System Preferences] or [System Settings] window, click [Network].



- 2 Select the connected network, and then click [Advanced...].



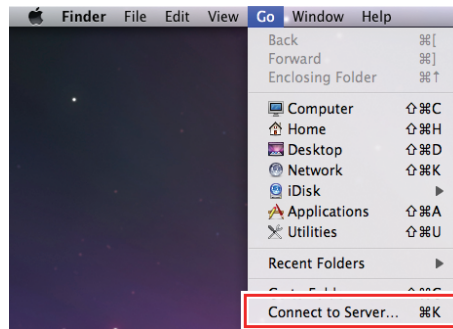
- 3 Select [WINS], input the same group name as that in the RasterLink PC ("WORKGROUP" in this example) in [Workgroup], and then click [OK].



## Hot Folder Settings Using the Finder

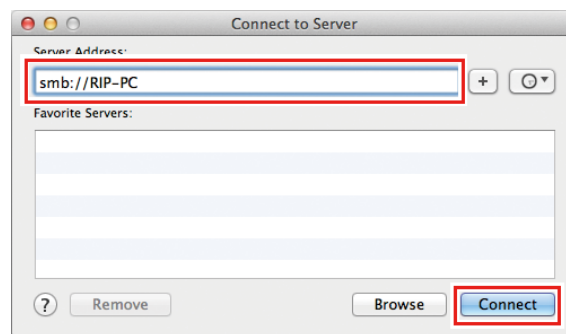
Select a file user using the Finder in order to access hot folders of RasterLink6Plus from a Macintosh client PC.

### 1 In [Finder], select [Go] - [Connect to Server...].

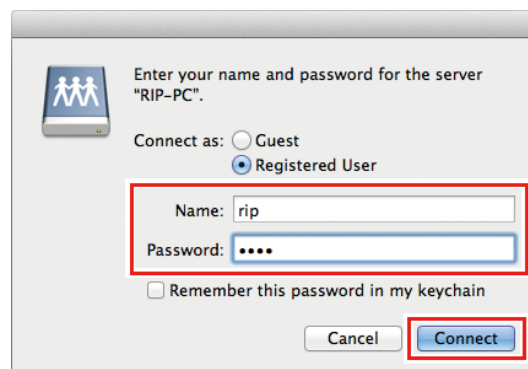


### 2 Input the following address for the [Server Address].

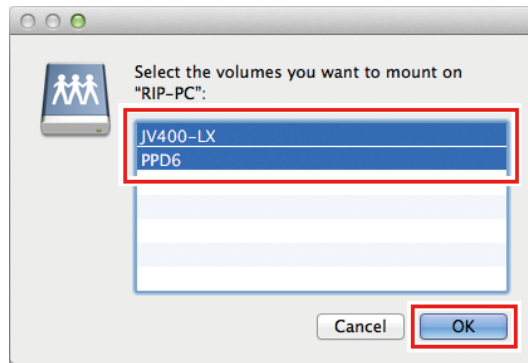
- "Host name of smb://RasterLink6Plus"  
or
- "IP address of smb://RasterLink6Plus"  
☞ "Checking Host Name and IP Address Settings"(P. 64)



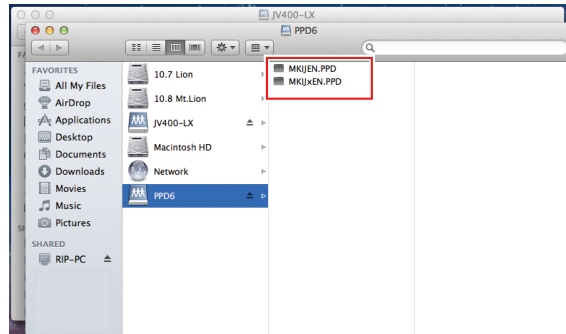
### 3 Input the [Name] and [Password] of a user already registered in the RasterLink PC, and then click [Connect].



#### 4 Select the hot folder and PPD folder being used, and then click [OK].



- The hot folder and PPD folder are mounted to enable access from the Macintosh client PC.



## Printer Settings

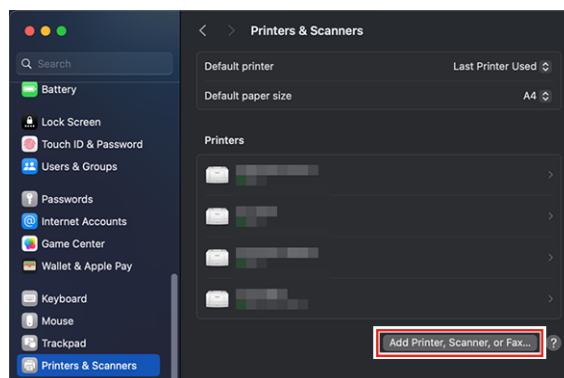
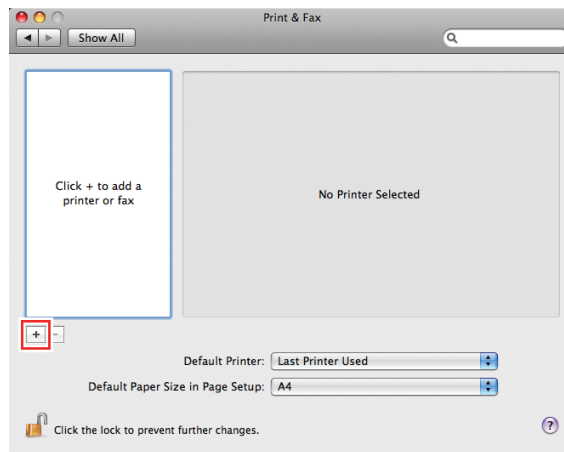
**1** In the [System Preferences] or [System Settings] window, select [Print & Scan].



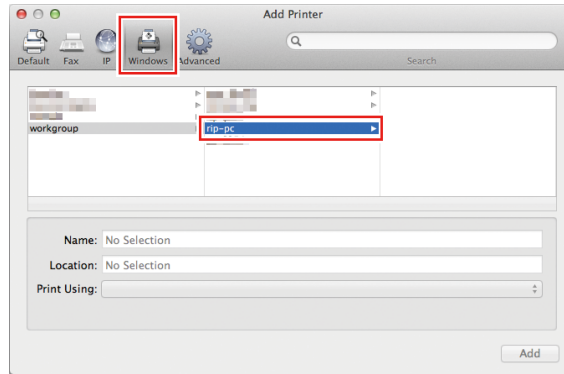
- For OS 10.5 to 10.6: Select [Print & Fax].
- For OS 10.9 and after: Select [Print & Scan].



**2** Click [+] or [Add Printer, Scanner, or Fax].



- 3** From the icons at the top of the screen, select [Windows], and then select [rip-pc] from the printers pull-down list.



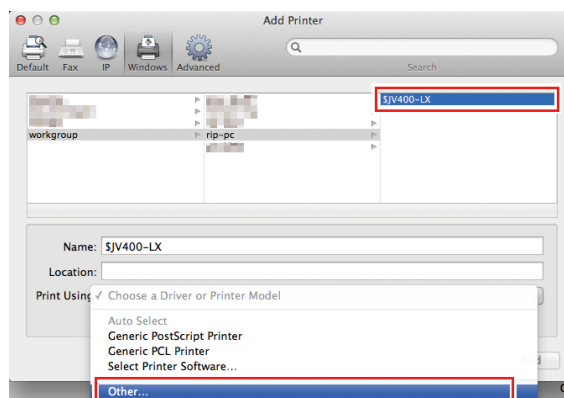
- Important!** • If you cannot find the RasterLink PC using this screen, refer to ["Manually Adding a Printer"](#) (P. 49) and add the printer accordingly.

- 4** Input the [Name] and [Password] of a user already registered in the RasterLink PC, and then click [Connect].

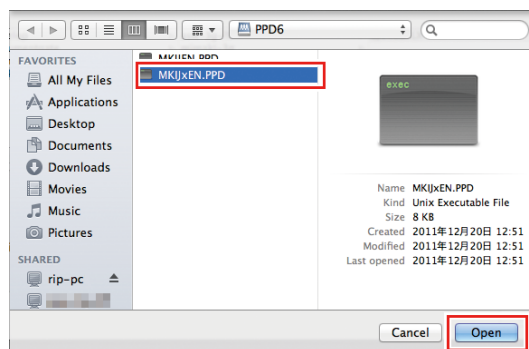
- Important!** • If connecting using a guest account, select [Guest] for [Connect as].




- 5** Select the printer to use, and select [Other] for [Use].



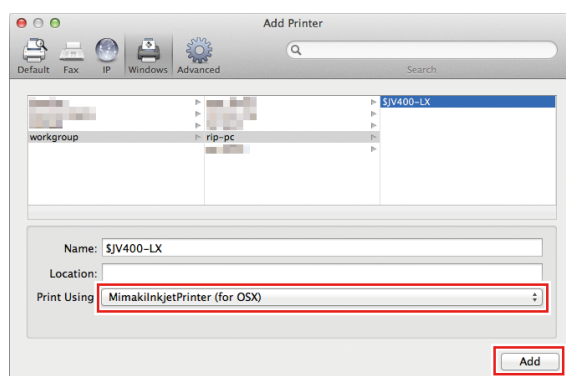
## 6 In the mounted PPD folder, select "MKIJxEN.PPD", and then click [Open].



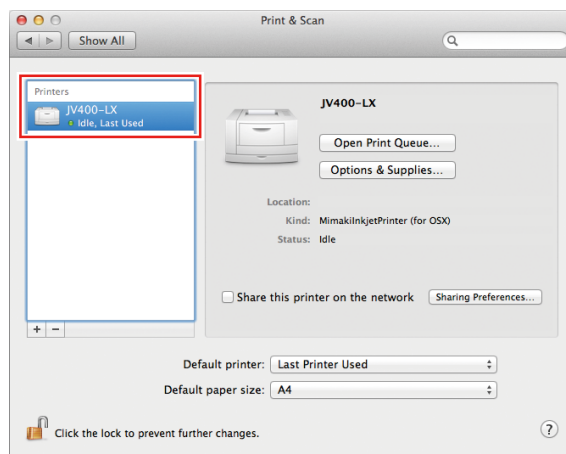
**Important!**

- Do not use "MKIJEN.PPD" with Macintosh.
- When "MKIJxEN.PPD" cannot be selected, select the driver referring to  "When "MKIJxEN.PPD" cannot be selected" (P. 52).

## 7 Check that [MimakiInkjetPrinter(for OSX)] is displayed, and then click [Add].



- The added printer is displayed in the list.



## 8 Repeat steps 2 to 7 to add more printers as necessary.

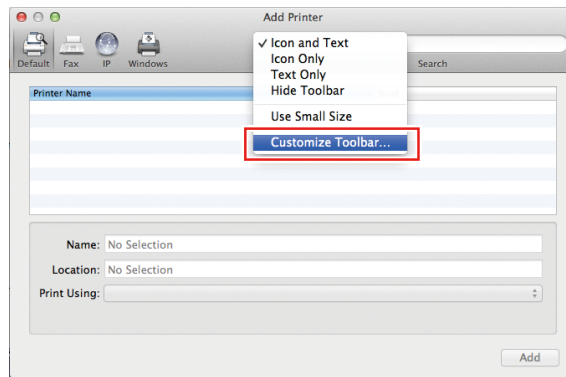


## Manually Adding a Printer

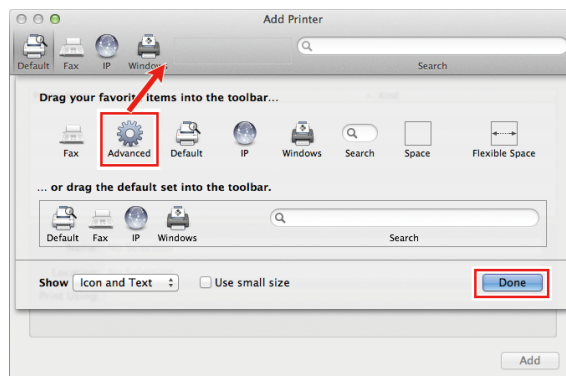
If you cannot find the RasterLink PC in the browser list, perform manual installation according to the following procedures.

### 1 In the toolbar of the [Add Printer] window, select the [⚙️] or [⚙️] icon (advanced settings).

- If there is no [⚙️] icon (advanced settings) in the toolbar, add one according to the following procedures.
  - (1) Press and hold the [Control] key while clicking on the toolbar, and then select [Customize toolbar] from the displayed pop-up menu.



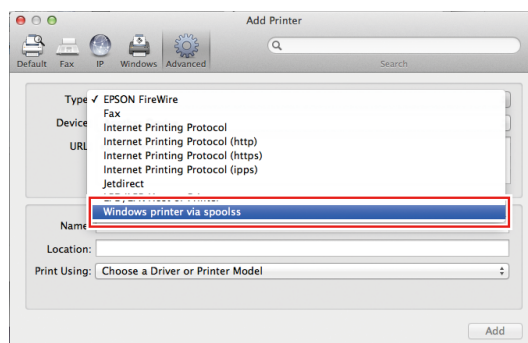
- (2) Drag the [⚙️] or [⚙️] icon (advanced settings) to the toolbar.
- (3) Click [Done].



### 2 In [Type], select [Windows printer via spoolss].

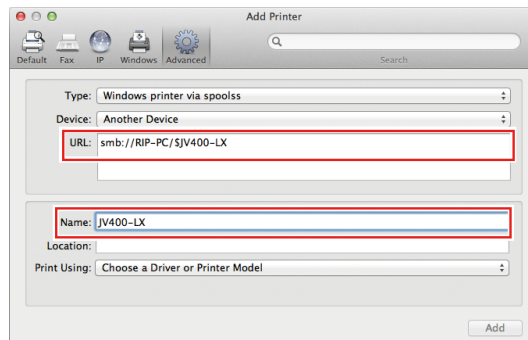


- For OS 10.5 to 10.6: Select [Windows].

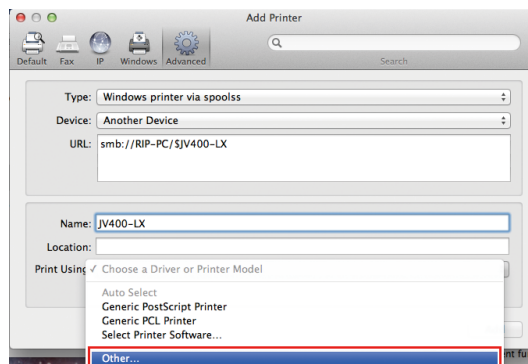


### 3 Input the following address for the [URL] and the printer name displayed on the Mac OC for the [Name].

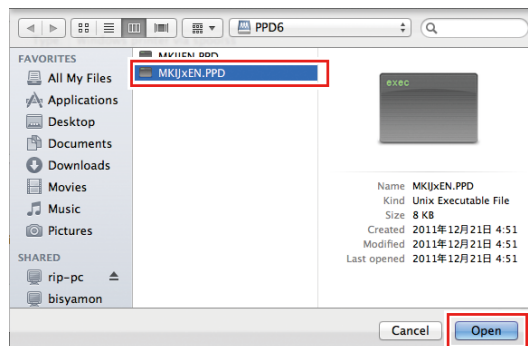
- "Host name/Shared printer of smb://RasterLink6Plus name  
or
- "IP address/Shared printer of smb://RasterLink6Plus"  
☞ "Checking Host Name and IP Address Settings"(P. 64)



### 4 Select [Other] for [Use].

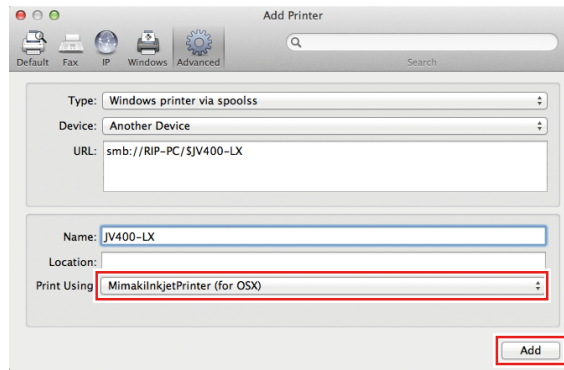


### 5 In the mounted PPD folder, select "MKIJxEN.PPD", and then click [Open].

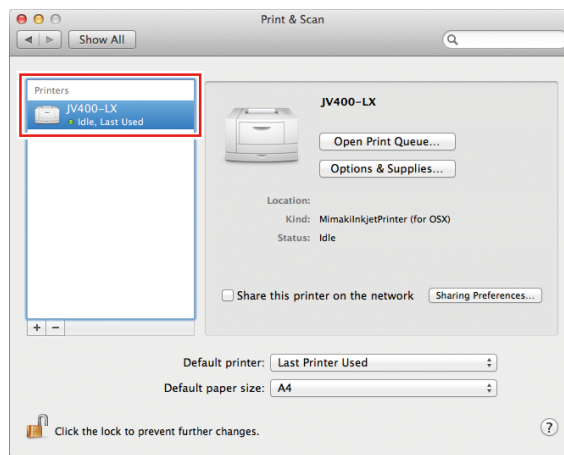


- Do not use "MKIJEN.PPD" with Macintosh.
- When "MKIJxEN.PPD" cannot be selected, select the driver referring to ☞ "When "MKIJxEN.PPD" cannot be selected"(P. 52).

## 6 Check that [MimakilnkjetPrinter(for OSX)] is displayed, and then click [Add].



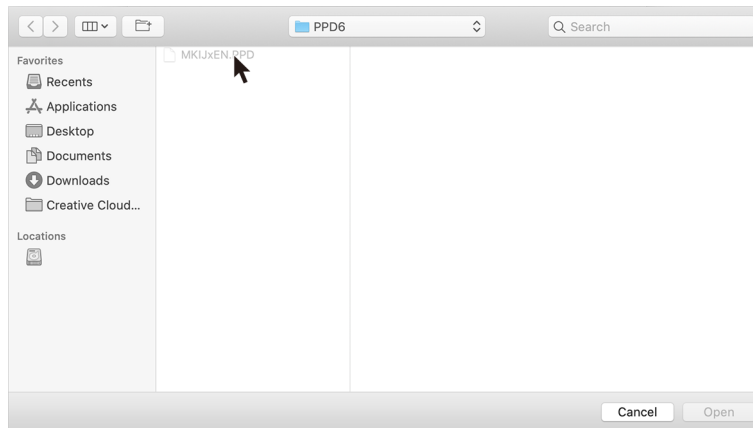
- The added printer is displayed in the list.



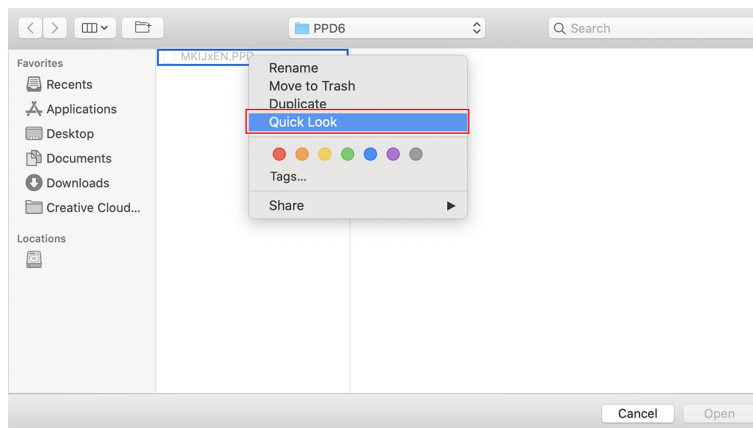
## When "MKIJxEN.PPD" cannot be selected

The driver (MKIJxEN.PPD) may not be able to be selected when a machine running macOS 10.15 or later is added printer. Please perform the following procedures if this is not possible.

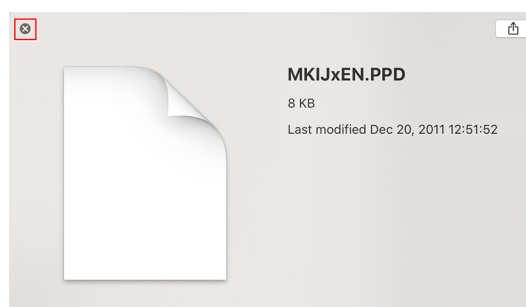
- 1 Move the cursor over "MKIJxEN.PPD" and open the context menu ([Control] key + click).



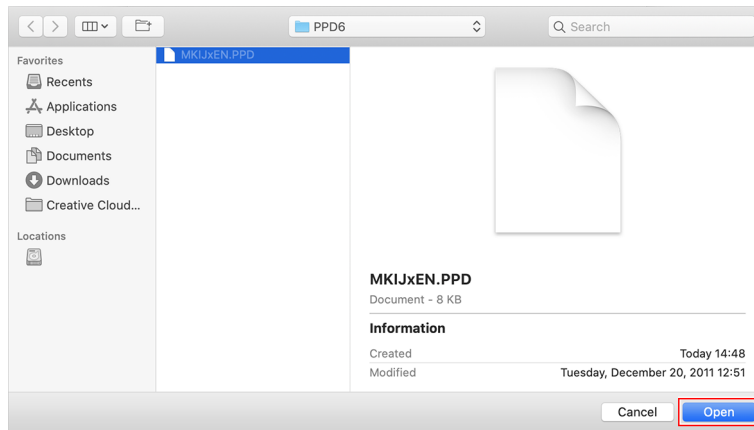
- 2 Select [Quick Look].



- 3 Close [Quick Look] window displayed in step 2.



## 4 Click [Open].



## For Mac OS X 10.4

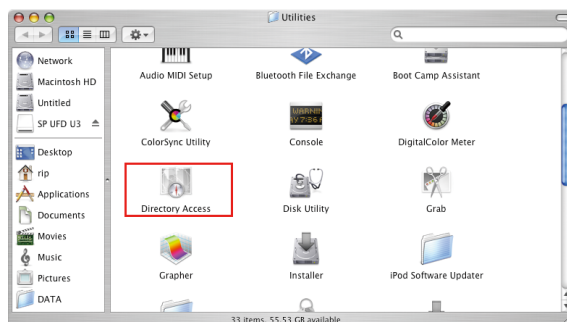
### Workgroup Settings

Specify settings so that the client PC can join the workgroup specified by the RasterLink PC.

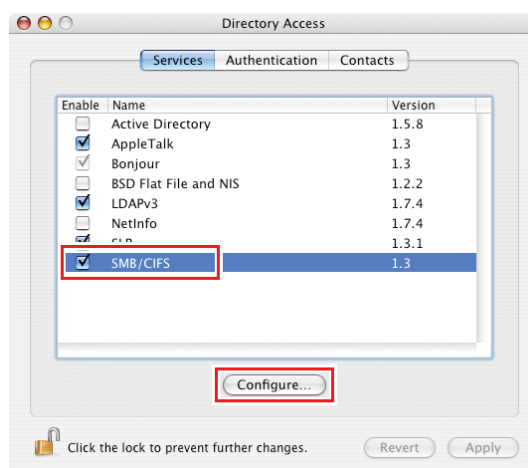
If joining a domain network, consult with network administrators regarding the network being used.

An example with "WORKGROUP" specified as the workgroup name is used for explaining the settings. Specify the workgroup name as "WORKGROUP" in the RasterLink PC as well.

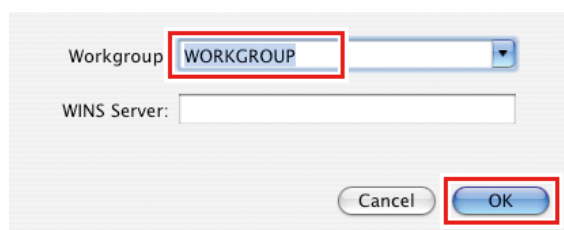
- 1 In [Finder], select [Go] - [Utilities].
- 2 Click [Directory Access].



- 3 Select the check box next to [SMB/CIFS], and then click [Configure...].



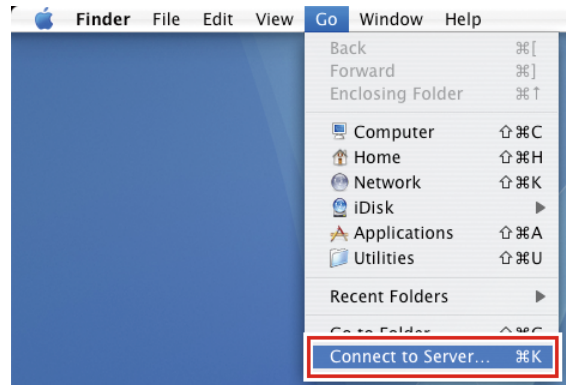
- 4 In [Workgroup], input the same group name as that of the [Workgroup] in the RasterLink PC ("WORKGROUP" in this example), and then click [OK].



## Hot Folder Settings Using the Finder

Select a file user using the Finder in order to access hot folders of RasterLink6Plus from a Macintosh client PC.

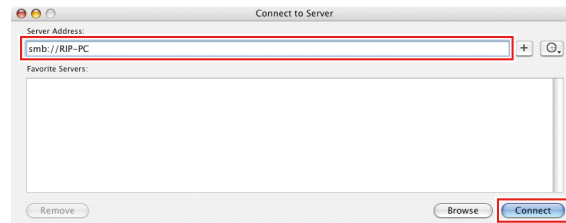
### 1 In [Finder], select [Go] - [Connect to Server...].



- Important!** • Select [Finder] - [Utilities] - [Directory Access], and check that the check box next to [SMB/CIFS] is selected.

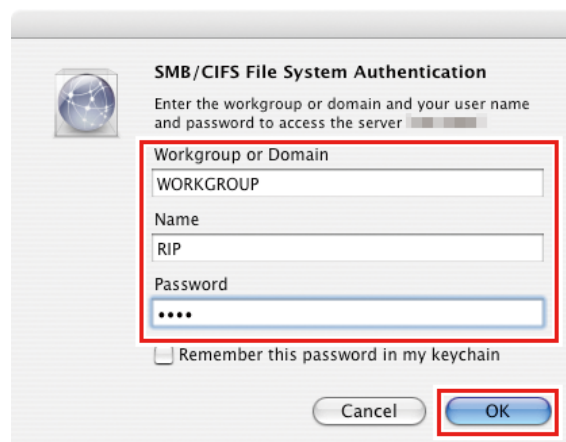
### 2 Input the following address for the [Server Address].

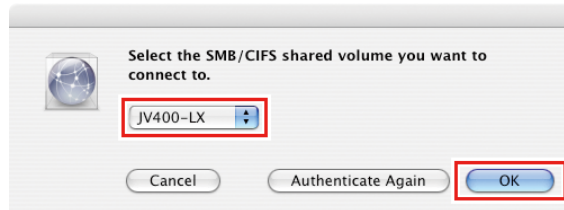
- "Host name of smb://RasterLink6Plus"  
or
- "IP address of smb://RasterLink6Plus"  
☞ "Checking Host Name and IP Address Settings"(P. 64)



### 3 Input the [Workgroup or Domain], [Name], and [Password] of a user already registered in the RasterLink PC, and then click [OK].

- Important!** • If the guest account is selected, the connection is made as "Guest".



**4** Select the hot folder being used, and then click [OK].

- The hot folder is mounted.
- Access from the Macintosh client PC is now enabled.

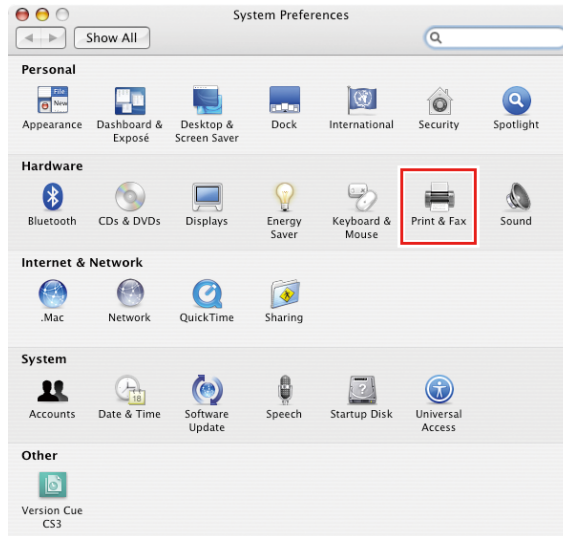
**5** Return to step 1 and repeat the steps but add the PPD folder in step 4.**6** After that, perform the same procedures as for the hot folder.

- The PPD folder is mounted.



## Printer Settings

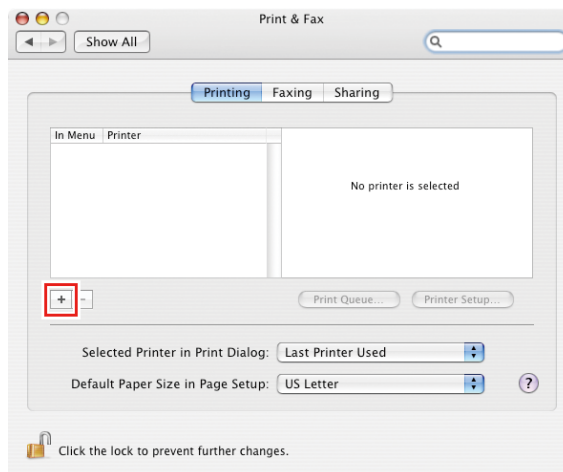
1 In the [System Preferences] window, select [Print & Fax].



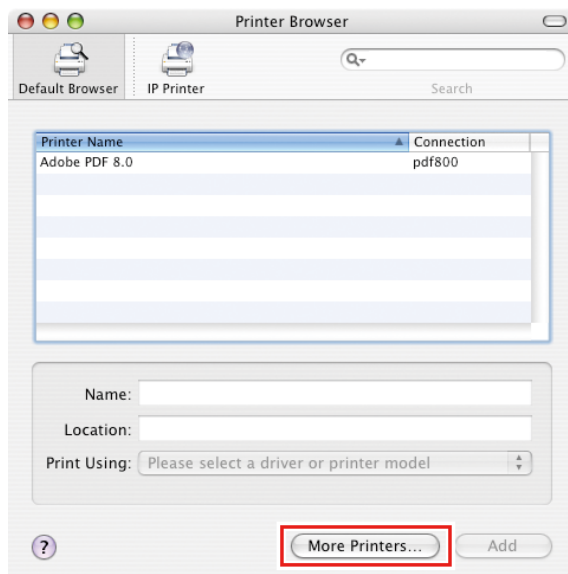
**Important!**

- Select [Finder] - [Utilities] - [Directory Access], and check that the check box next to [SMB/CIFS] is selected.

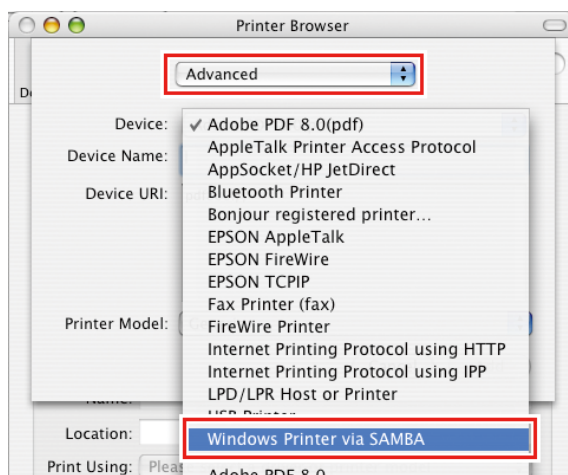
2 Click [+].



### 3 Press and hold the [Option] key while clicking on [More Printers...].

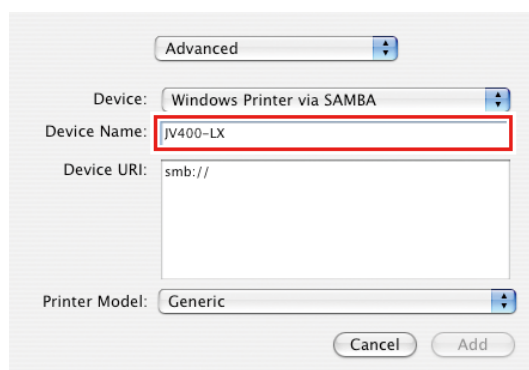


### 4 In the top combo box, select [Advanced...], and then select [Windows Printer via SAMBA] for the [Device].



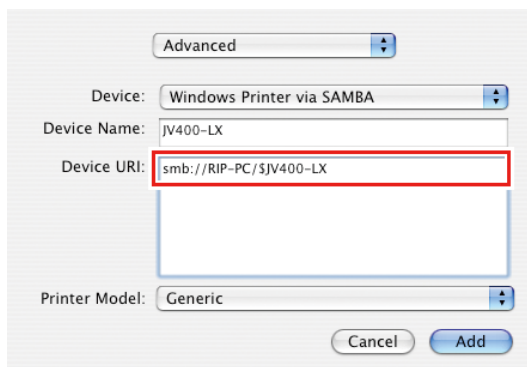
### 5 Input a freely chosen name for the [Device Name].

- The printer name is displayed on the Mac OS.

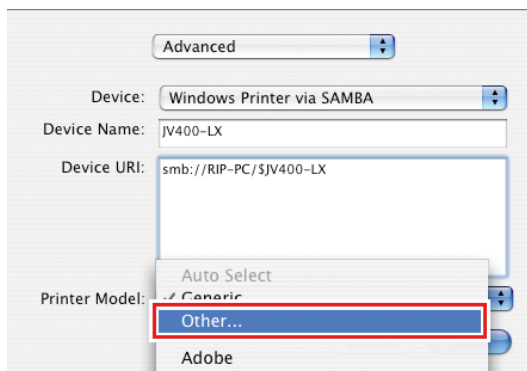


## 6 Input the following address for the [Device URL].

- "Host name/Shared printer of smb://RasterLink6Plus name  
or
- "IP address/Shared printer of smb://RasterLink6Plus"  
☞ "Checking Host Name and IP Address Settings"(P. 64)

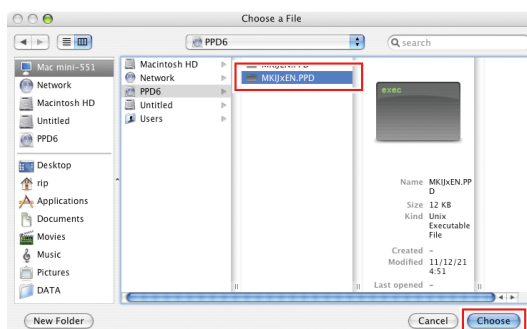


## 7 Select [Other] for [Printer Model].

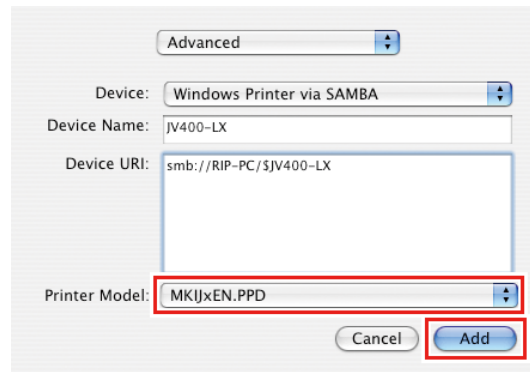


## 8 In the mounted PPD folder, select "MKIJxEN.PPD", and then click [Choose].

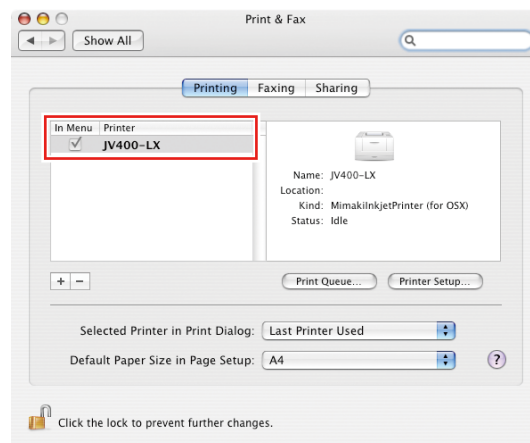
- Important!** • Do not use "MKIJEN.PPD" with Mac OS X.



- 9** Check that the PPD file selected in step 8 is displayed for the [Printer Model], and then click [Add].



- The added printer is displayed in the list of the [Print & Fax] window.



- 10** Repeat steps 2 to 9 to add more printers as necessary.

## For Mac OS X 10.3

### Workgroup Settings

Specify settings so that the client PC can join the workgroup specified by the RasterLink PC.

If joining a domain network, consult with network administrators regarding the network being used.

An example with "WORKGROUP" specified as the workgroup name is used for explaining the settings.

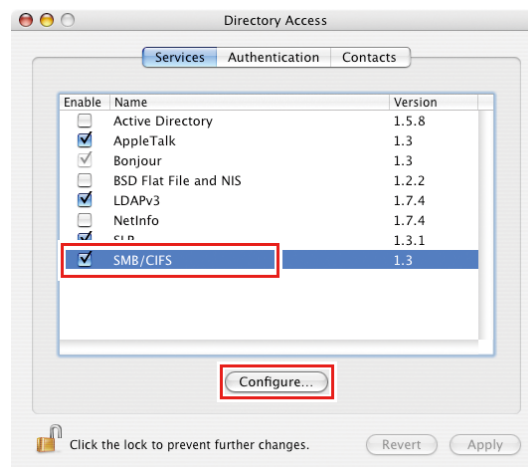
Specify the workgroup name as "WORKGROUP" in the RasterLink PC as well.

**1** In [Finder], select [Go] - [Utilities].

**2** Click [Directory Access].

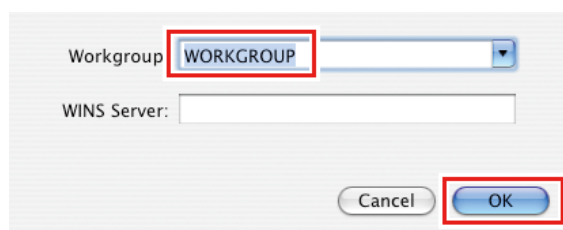


**3** Select the check box next to [SMB], and then click [Configure...].



• The screen shown is for OS 10.4.

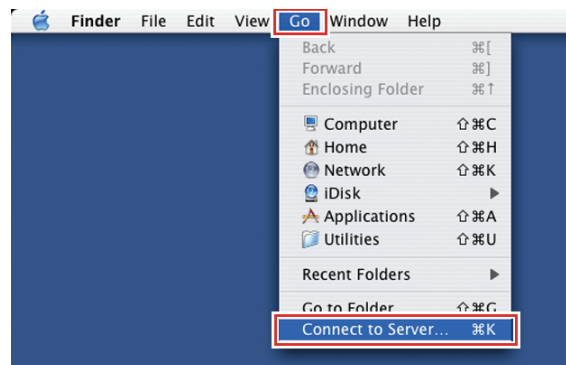
**4** In [Workgroup], input the same group name as that of the [Workgroup] in the RasterLink PC ("WORKGROUP" in this example), and then click [OK].



## Hot Folder Settings Using the Finder

Select a file user using the Finder in order to access hot folders of RasterLink6Plus from a Macintosh client PC.

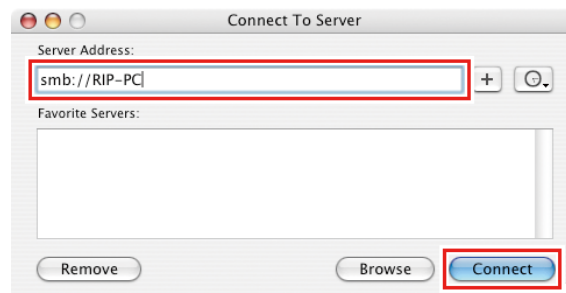
### 1 In [Finder], select [Go] - [Connect to Server...].



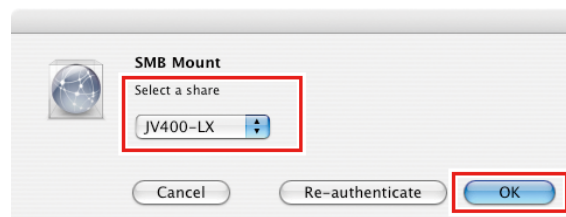
- Important!**
- Select [Finder] - [Utilities] - [Directory Access], and check that the check box next to [SMB] is selected.

### 2 Input the following address for the [Server Address].

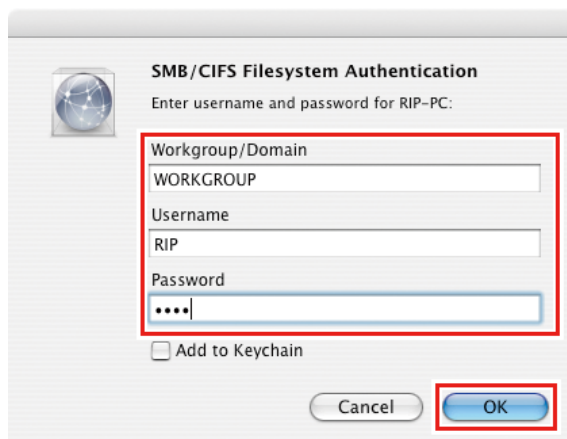
- "Host name of smb://RasterLink6Plus"
  - "IP address of smb://RasterLink6Plus"
- ☞ "Checking Host Name and IP Address Settings"(P. 64)



### 3 In [Select a share], select the hot folder being used, and then click [OK].



- 4** Input the [Workgroup/Domain], [Username], and [Password] of a user already registered in the RasterLink PC, and then click [OK].



- Important!**
- If the guest account is selected, the connection is made as "Guest".
  - The hot folder is mounted to enable access from the Macintosh client PC.

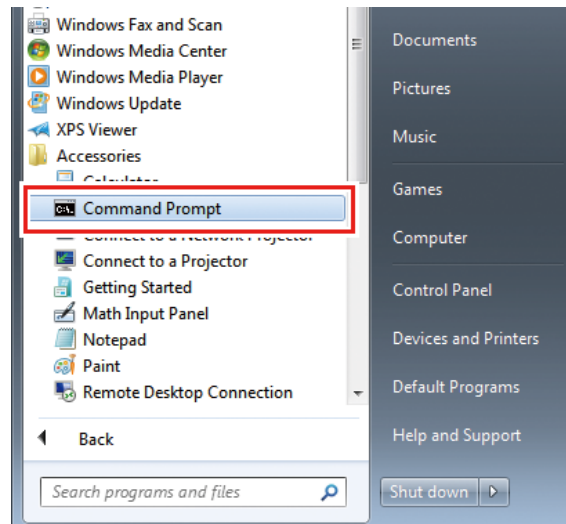


- 5** Return to step 1 and repeat the steps but add the PPD folder in step 3.
- 6** After that, perform the same procedures as for the hot folder.
- The PPD folder is mounted.

## 3.4 Checking Host Name and IP Address Settings

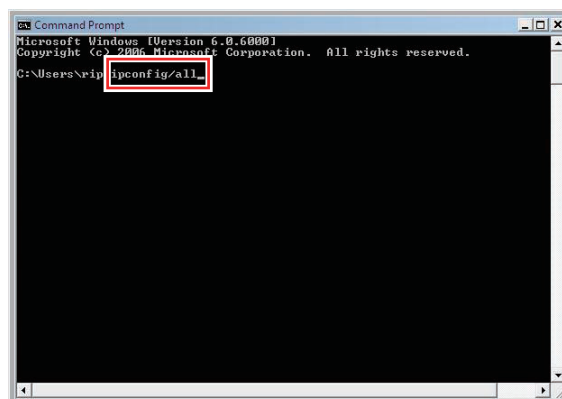
The host name and IP address of the RasterLink PC are needed in order to access RasterLink6Plus. You can check the host name and IP address according to the following procedures.

- 1 In the [Start] menu, select [All Programs] - [Accessories] - [Command Prompt].

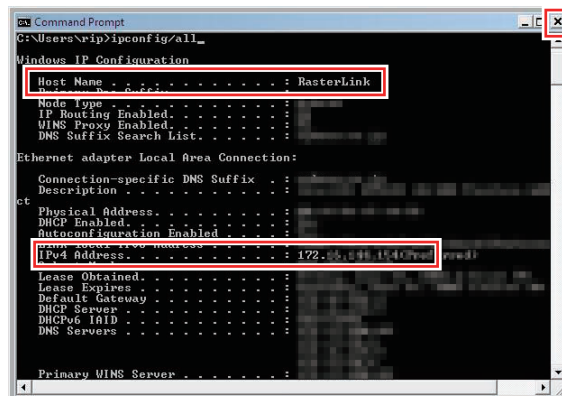


- 2 Input the following character string, and then press the [Enter] key.

- ipconfig/all



- [Host Name] and [IP Address] are displayed.
- When finished, click [X].





## **RasterLink6Plus Network Connection Guide**

---

---

March, 2024

**MIMAKI ENGINEERING CO.,LTD.**

2182-3 Shigeno-otsu, Tomi-shi, Nagano 389-0512 JAPAN

---

---

D203228-24-29032024

