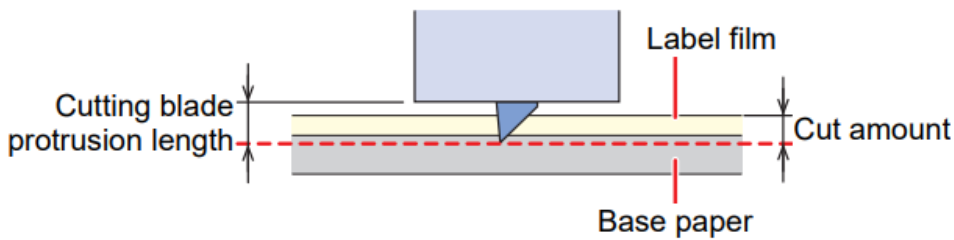


CG-AR series How to Print & Cut (using FineCut)

Preparation

Check the sharpness of cutter with the media you are going to use.

(1) Adjust the cutting blade protrusion length



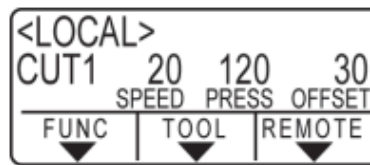
- Reference of cutting blade protrusion length

With laminate: 0.5 mm
No laminate: 0.3 mm

- If cutting the base paper together, lifetime of cutter blade becomes shorter.

(2) Adjust the cutting speed and pressure based on the cutting conditions.
Please check the offset of the attached cutter blade (SPB-0030) is 0.30mm.

1. Press “FUNC2” key (TOOL) on the Local mode.
2. Set the cutting speed and press “ENTER” key.
3. Set the pressure and press “ENTER” key.
4. Set the offset and press “ENTER” key.



* Display of the offset value “30” means 0.30 mm

Refer to “Setting Tool Conditions” in the Operation Manual.

When cutting PVC sheet, cutting speed is recommended to 20 cm/s or lower.

Pressure: For PVC 50g ~
For Film 30g ~

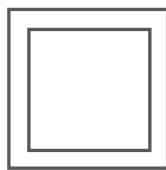
* If the test cut cannot be removed, increase the pressure by 5g at a time.

Offset: 0.30 mm
(In case of SPB-0030)

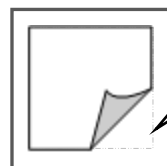
(3) In CG-AR, perform [SQUARE CUT] and check if the tool conditions are appropriate.

1. Set the media to the plotter and perform media detection.
2. Press “FUNC1” key on the Local mode.
3. Select [SQUARE CUT] and press “ENTER” key.
4. Check the square cut result.
5. Check the following 2 points and adjust the cutting conditions.
 1. Label film and adhesive is cut.
 2. The blade does not leave an indentation on the base paper without making a cut.

Refer to “Test Cutting” in the Operation Manual.



Square cut pattern



Good cutting condition

- It will be easier to peel off if the glue layer is cut.

CG-AR series How to Print & Cut (using FineCut)

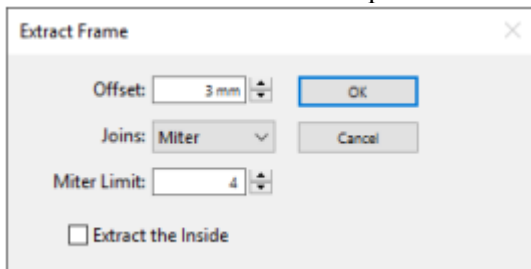
Creating print data Add cut lines and register marks using Adobe Illustrator.

As an example, here is how to create a sticker where the letter “Print and Cut” are cut around their edge.

(1) Select the print data and click the “Frame Extraction” icon in FineCut.



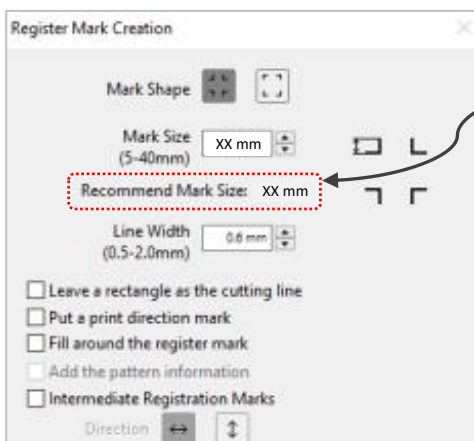
(2) Set the offset value to cut the outer position of the letters.



(3) Use the rectangle tool to draw around it and click on the “Register Mark Creation” icon.



(4) When creating the register marks, select the setting to the “Recommended Mark Size”.



For CG-AR register marks, please select this setting also.



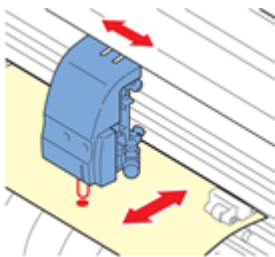
- Create a new in CMYK color mode in Illustrator.
- This document explains the procedure for creating cut lines using the frame extraction function. If you create the cutting line by yourself, you need to specify on FineCut to cut the created cutting line.
- If the offset is set to a negative value, the inside of the character will be cut.
- Cut line is created in the new layer as [FC frame layer 1].
- The FC frame layer is created as a **non-printing** layer.

CG-AR series How to Print & Cut (using FineCut)

Print and cut using your printer/plotter

- (1) Print using your printer.
- (2) After printing the PVC sheet, let it dry. Then laminate it if necessary.
- (3) Set the printed sheet on the plotter and perform sheet detection.
- (4) After sheet detection, the plotter enters into the register mark detection mode.

* Align the pointer with the register mark in the lower right corner and press the ENTER key.



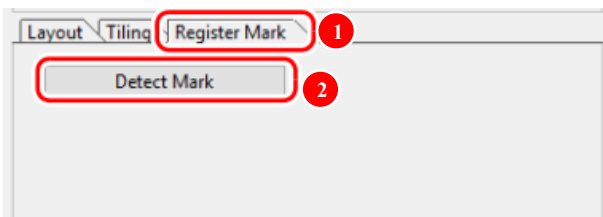
Print and Cut

Move the pointer to the register mark on the lower right.

- (5) Click on plot to display the plot screen of FineCut/Coat9.



- (6) Click on [Resister Mark] and click on [Detect Mark].



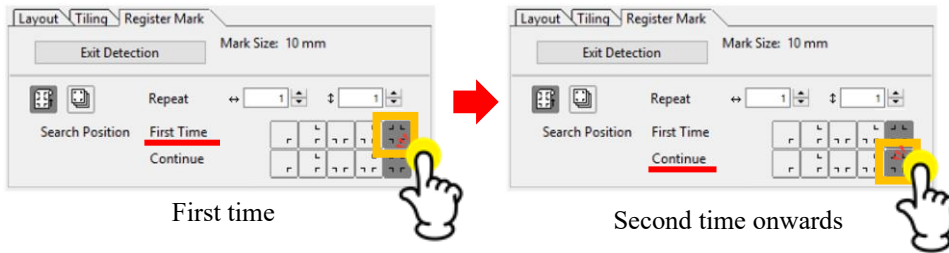
- Data that includes register marks cannot be scaled and printed.

- After detecting the register mark, check that the cutter blade is at the corner of the register mark, and press the REMOTE key.

- If the register mark is not detected, it cuts without reading the register marks.

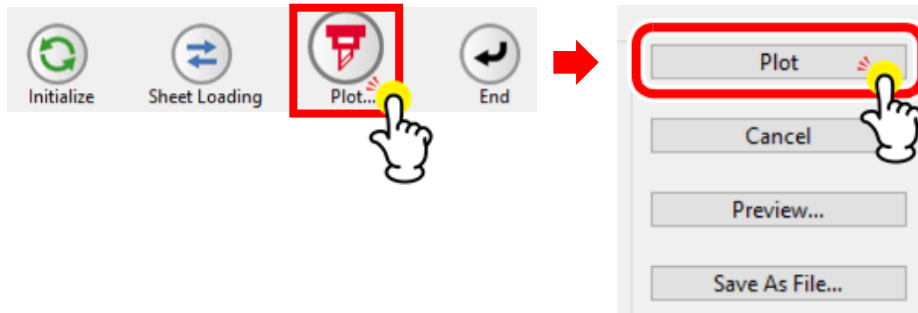
CG-AR series How to Print & Cut (using FineCut)

(7) Set the register mark detection points.



- Set 4-point detection for the first time and for the second and subsequent times. 4-point detection is the most accurate.

(8) Click on “Plot” to initiate the cutting process.



- Start cutting.

(9) Complete. Check the cut results to determine if they are satisfactory.

Please also refer to this video.

“Mimaki CG-AR Series How to cut data with Register marks”

<https://www.youtube.com/watch?v=ksXRGC-qjwc>