

## If a Waste Ink Tank Confirmation Message Appears

Ink used in head cleaning, etc. is stored in the waste ink tank on the lower right side of the machine. The sensor monitors the discharged amount of ink in this machine. When that reaches a specified amount, the machine displays a confirmation message. (When this message is displayed, consider the replacement of the waste ink tank.)

### Confirmation Message in LOCAL

**1** The message on the right is displayed.

<LOCAL>  
Waste ink near full

or

<LOCAL>  
Waste ink full

or

<LOCAL>  
Waste ink tank none

**2** Check the state of the waste ink tank

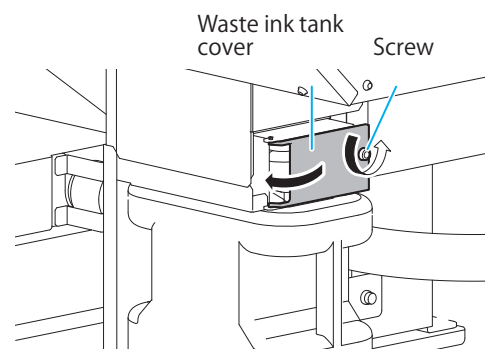
### Replace the waste ink tank with another

**Important!**

- Be sure to wear the supplied safety glasses and gloves when replacing the waste ink tank. Otherwise, you may get ink in your eyes.
- Do not replace the waste ink tank while this machine operates (during printing or cleaning).
- When waste ink may spill out during the work, wipe it off with a waste cloth etc.

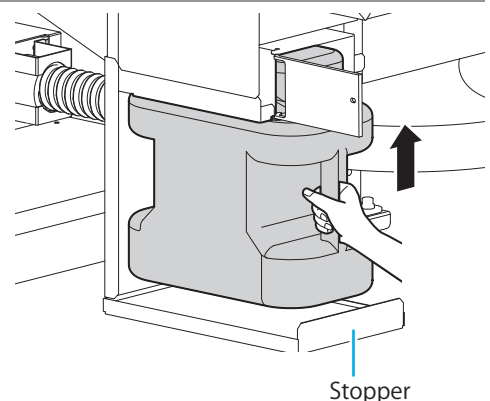
**1** Open the waste ink tank cover.

- Remove the screw attaching to the waste ink tank cover and open the cover to the front.



**2** Lift the waste ink tank a little.

- Lift the waste ink tank up to the position where it does not hit the stopper.

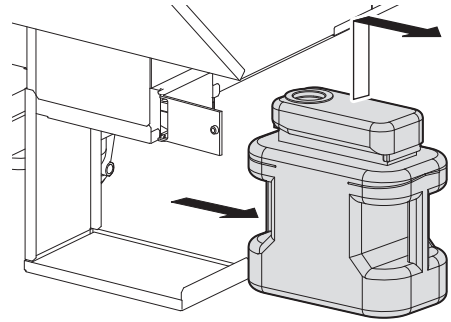
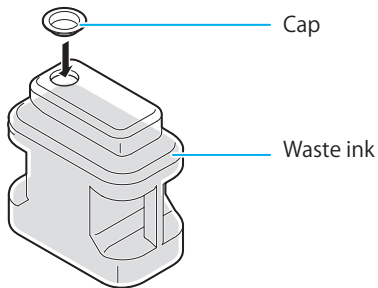


**3**

Take out the used waste ink tank.

- (1) Hold the handle of the waste ink tank and pull it out to the front.
- (2) Raise the waste ink tank and take it out.

- Put a cap on the waste ink tank removed.

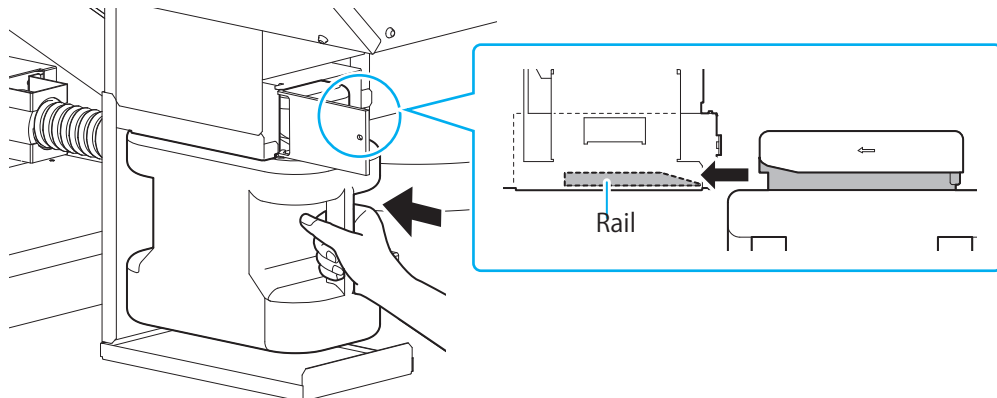
**4**

Replace the new waste ink tank.

- (1) Prepare a new waste ink tank (SPC-0197).
- (2) Hold the handle of the waste ink tank and insert it along the rail.
- (3) Raise the waste ink tank.



- Waste ink is equivalent to waste oil or industrial waste. Request an industrial waste disposal company for disposal of waste ink.

**5**

Close the waste ink tank cover.

- When the machine recognizes the new waste ink tank, the warning message is released.

